

7 - 2014 € 1,50

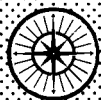
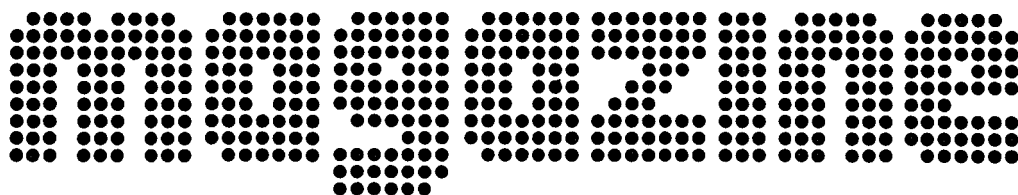
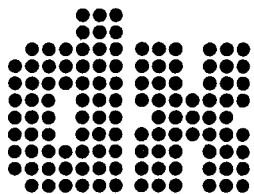
BBC ORTF  
ADIO MOSKOU  
NDR RAI TVR



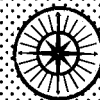
ISSN 0175-6877



9 770175 687009



WORLD WIDE DX CLUB



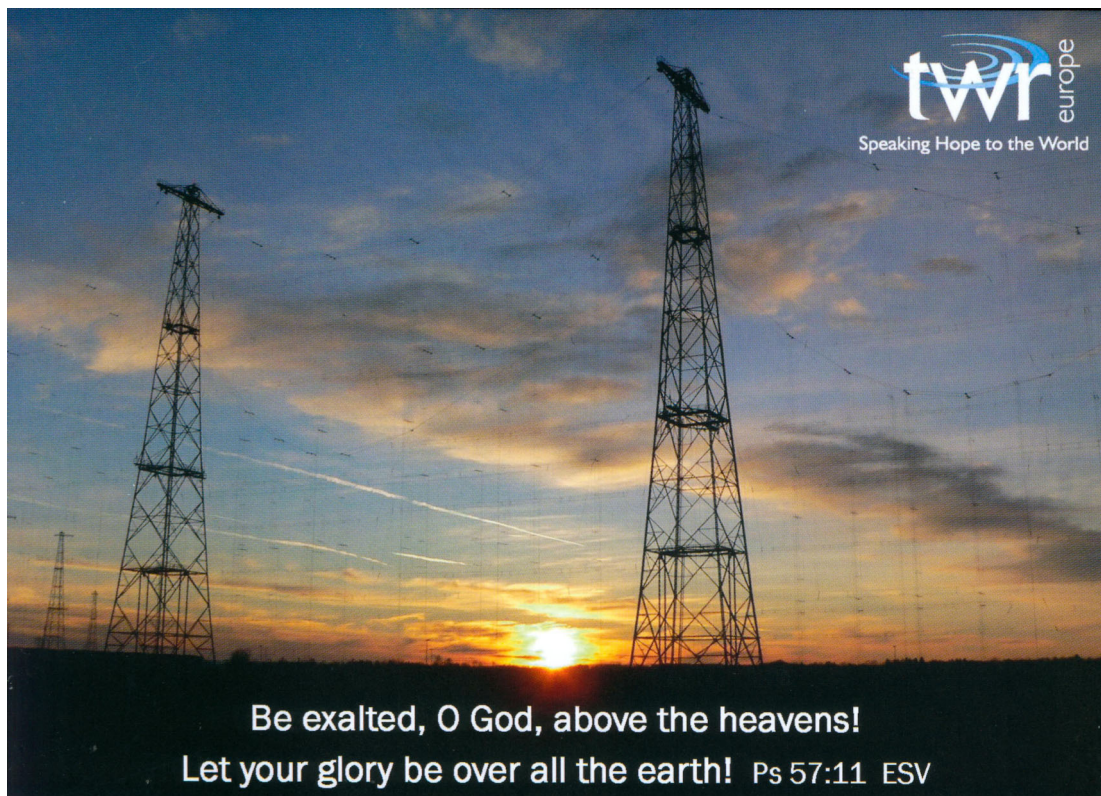
## Staff of WORLDWIDE DX CLUB:

- PRESIDENT AND CHIEF EDITOR** . . . ✉ WWDXC Headquarters, Michael Bethge, Postfach 12 14, D-61282 Bad Homburg, Germany ● E-Mail: mail@wwdxc.de  
☎ +49-6172-123118 ● ☎ +49-6172-123117
- BROADCASTING NEWS EDITOR** . . . ✉ Walter Eibl, Postfach 15 45, D-91005 Erlangen, Germany  
E-Mail: news@wwdxc.de
- LOGBOOK EDITOR** . . . . . ✉ Ashok Kumar Bose, Unit # 28, 7035, Rexwood Road, Mississauga, Ontario, L4T 4M6, Canada ● E-Mail: logbook@wwdxc.de
- QSL CORNER EDITOR** . . . . . ✉ Dario Gabrielli, Viale della Resistenza 33b, I-30031 Dolo (Ve), Italy  
E-Mail: qsl@wwdxc.de
- TOP NEWS EDITOR (Internet)** . . . . ✉ Wolfgang Büschel, Hoffeld, Sprollstrasse 87, D-70597 Stuttgart, Germany ● E-Mail: topnews@wwdxc.de
- TREASURER & SECRETARY** . . . . ✉ Karin Bethge, Urseler Strasse 18, D-61348 Bad Homburg, Germany
- NEWCOMER SERVICE OF AGDX** . . ✉ Hobby-Beratung, c/o AGDX, Postfach 12 14, D-61282 Bad Homburg, Germany (please enclose return postage)

Each of the editors mentioned above is self-responsible for the contents of his composed column. Furthermore, we cannot be responsible for the contents of advertisements published in DX MAGAZINE.

We have no fixed deadlines. Contributions may be sent either to WWDXC Headquarters or directly to our editors at any time. If you send your contributions to WWDXC Headquarters, please do not forget to write all contributions for the different sections on separate sheets of paper, so that we are able to distribute them to the competent section editors.

- WORLDWIDE DX CLUB homepage in the Internet: <<http://www.wwdxc.de>>
- Weekly "TopNews" by Wolfgang Büschel: <<http://topnews.wwdxc.de>> (available free of charge by E-Mail to our members on request)
- Latest DRM schedule: <<http://www.wwdxc.de/drm.htm>>



*TWR Europe QSL 2014 (via Paul Reinersch)*

DX MAGAZINE is the monthly publication of WORLDWIDE DX CLUB, Postfach 12 14, D-61282 Bad Homburg, Germany. Price for a single copy: € 1.50 or 2 International Reply Coupons (IRC's); annual subscription rate: € 18.00. Other currencies and air mail rates on request. Cover: Peter Pohle + Jürgen Kauer (KAVOP)



DX MAGAZINE No. 7

Vol. XLIX

July 2014

Hello again,

Welcome to another issue of our DX MAGAZINE. Please remember that the next issue of our DX MAGAZINE will be our usual summer double edition No. 8/9, which will be mailed in the 35th calendar week (deadline: August 23<sup>rd</sup>, 2014). Our editors will be very thankful for your contributions to this double edition. And now over to our usual news from outside the club - only one item this month:

**World Radio TV Handbook** has informed us that updates to the A season International radio broadcasting schedules are available to download, for free, from <http://www.wrth.com>, including the cuts and changes to VOA/RFA/RFE etc. (Sean D. Gilbert, WRTH International Editor)

And with this best wishes and good DX until next month from

## **NEWS ABOUT BROADCASTING (+other) STATIONS**

**Walter Eibl · Postfach 15 45 · D-91005 Erlangen · GERMANY**

### **Ramadan 2014**

Das Fasten im Ramadan gehoert zu den fuenf wichtigsten religioesen Pflichten bekennender Muslime. Da in den Stunden des Tageslichts zu fasten ist, wird fuers Fruehstueck frueher aufgestanden und verlagert sich das soziale Leben weiter in den Abend. Die Rundfunkstationen in islamisch gepraeigten Laendern passen sich dem anderen Tagesablauf an und haben in dieser Zeit meist einen erweiterten Sendeplan, so dass dann einige Raritaeten auch in Europa hoerbar werden.

In frueheren Jahren wurde als Beispiel hierfuer immer Radio Djibouti 4780 kHz herangezogen. Ein anderer Klassiker ist Radio Kashmir, das im Ramadan eine zusaetzliche Fruehsendung hat, die im Wesentlichen dem Islam gewidmet ist. Allerdings ist die Frequenz 4950 kHz sehr unregelmassig geworden. Auch Radio Republik Indonesia Ternate konnte im Juli 2013 vergleichsweise haeufig auf 3345 kHz gehoert werden, was der US-amerikanische Kurzwellenexperte Ron Howard auf eine regelmaessigere Aktivitaet waehrend des islamischen Fastenmonats zurueckfuehrte.

Die Festlegung von Beginn und Ende des Ramadan kann aufgrund unterschiedlicher Berechnungsgrundlagen und Bindungen an ein Herkunftsland variieren. Der Koordinierungsrat der Muslime in Deutschland hat sich auf einen einheitlichen Zeitrahmen verstaendigt und nennt als 1. Ramadan den 28. Juni und fuer das Fest des Fastenbrechens den 28. bis 30. Juli 2014.

(Prof. Dr. Hansjoerg Biener-D, ntt via wwdxc BC-DX TopNews July 1)

\*\*\*\*\*

**ANTARCTICA [and non]** - LRA36, RN Arcángel Antarctica [sic] on 15475.98 kHz at 1930 UT 1-7 with Spanish info and music, not strong. Signal drop down at 2000. At the same time Radio Inconfidência Brazil on 15190.11 kHz. Mostly with music, ID at 2006 UT. 73, RX Perseus and End Fed antenna.  
(Maurits Van Driessche, Belgium, July 2, Hard-Core-DX mailing via WOR 1728, DXLD)

**ASCENSION ISL / SOUTH AFRICA / UAE** - Additional frequencies of BBC, probably football World Cup 2014 Brasil:

English World Service

1530-1600	17830	ASC	250	kW	085	deg	to	CEAf	Wed/Thu
2000-2100	3255	MEY	100	kW	000	deg	to	SAf	Mo/Tue/Thu/Sa/Su
2000-2100	6170	MEY	250	kW	019	deg	to	CEAf	Mo/Tue/Thu/Sa/Su
2000-2100	9410	DHA	250	kW	220	deg	to	CEAf	Mo/Tue/Thu/Sa/Su
2100-2200	3255	MEY	100	kW	000	deg	to	SAf	Mo/Tue/Thu
2100-2200	6170	MEY	250	kW	019	deg	to	CEAf	Mo/Tue/Thu
2100-2200	9410	DHA	250	kW	220	deg	to	CEAf	Mo/Tue/Thu
2130-2400	5830	MEY	250	kW	019	deg	to	CEAf	Sa
2130-2400	9510	ASC	250	kW	065	deg	to	Waf	Sa
2130-2400	11625	ASC	250	kW	065	deg	to	Waf	Sa
2130-2400	12025	ASC	250	kW	027	deg	to	Waf	Sa

Hausa

1530-1800	17685	ASC	250	kW	065	deg	to	Waf	Wed/Thu
2000-2200	12060	ASC	250	kW	065	deg	to	Waf	Mo

(Ivo Ivanov-BUL, via wwdxc BC-DX TopNews June 25)

**AUSTRALIA** - HCJB Australia now, maybe from July 1

0730-0830	15490	KNX	050	kW	080	deg	to	PAC	English.
1400-1530	15450	KNX	100	kW	320	deg	to	SEAS	English.

(Ivo Ivanov-BUL, via wwdxc BC-DX TopNews July 11)

**AZERBAIJAN** - Frequency change of Ictimai Radio. Very awful modulation / audio during the time period 13-19 at least and at other time, maybe even 24 hrs.

1300-1900 NF 11761vUNID tx to CAs Azeri, ex9677,5v. Between 1700-1900 totally blocked by R.Liberty in Russian.

Other stations on 11760 kHz

0000-0500	11760	HAB	100	kW	non-dir	to	CAM	Spanish Radio Habana Cuba	
0000-1200	11760	SZG	100	kW	165	deg	to	CHN	Chinese China Nat.Radio 1
0023-0220	11760	KAM	500	kW	274	deg	to	SAM	Spanish VOIRI/IRIB
0323-0520	11760	SIR	500	kW	336	deg	to	WAs	Azeri VOIRI/IRIB
1100-1500	11760	HAB	100	kW	non-dir	to	CAM	Spanish Radio Habana Cuba	
1200-1257	11760	KUN	500	kW	135	deg	to	AUS	English China Radio Inter
1300-1357	11760	KUN	500	kW	135	deg	to	AUS	English China Radio Inter
1500-1530	11760	HAB	100	kW	non-dir	to	CAM	Esperanto Su R.Habana Cuba	
1700-1900	11760	LAM	100	kW	055	deg	to	EEu	Russian Radio Liberty
1900-2000	11760	HAB	100	kW	non-dir	to	CAM	English Radio Habana Cuba	
2000-2030	11760	HAB	100	kW	non-dir	to	CAM	French Radio Habana Cuba	
2100-2400	11760	HAB	100	kW	non-dir	to	CAM	Spanish Radio Habana Cuba	

Strong QRM in Sofia from other stations adjacent channels 11755/11765

2030-2100	11755	ISS	250	kW	165	deg	to	Waf	Yoruba Adventist World Radio
1500-1625	11765	EMR	500	kW	092	deg	to	WAs	Dari/Pashto/Uzbek VOTurkey
1900-2000	11765	ISS	500	kW	194	deg	to	NWaf	Arabic Radio TV Algerienne
2000-2005	11765	ISS	500	kW	194	deg	to	NWaf	French Radio TV Algerienne
2005-2100	11765	ISS	500	kW	194	deg	to	NWaf	Arabic Radio TV Algerienne

Surprising daytime reception of Ictimai Radio with FM mode audio shortwave

0700-1200 11761vUNIDidentified tx to CAs Azeri.

(Ivo Ivanov-BUL, via wwdxc BC-DX TopNews June 28)

**BOLIVIA** - 3310, R. Mosoj Chaski, Cochabamba, 2230-2240, 28/6, quíchua, música índia; 33341, QRM da Tallinn R, em 3310-BLS.

5952.45, R. Pío XII, Siglo XX, 2210-2222, 28/6, quíchua, texto; 35332.

6155.1, R. Fides, La Paz, 2215-2226, 28/6, castelhano, música e canções; 24331, QRM adjacente. Bons DX e melhores 73 (Carlos Gonçalves, PORTUGAL, dxldyg via DXLD)

6134.835 Radio Santa Cruz, Santa Cruz, on 7 July at 0145 UT - Paulina Rubio vocal, canned ID, more Latin pops. Excellent S8 signal. (Brandon Jordan-TN-USA, hcdx July 7)

**BRAZIL** - 6135.57 Radio Aparecida, Aparecida, on 7 July at 0150-0200\* UT - low key religious music and talk, poor to fair and best in USB to avoid Santa Cruz, // 9629.967 kHz good with scratchy modulation, 11854.85 kHz fair. 9664.78 kHz, R Voz Missionária, Camboriú, on 7 July at 0205 UT – Two men in a religious discussion, excellent S=9+10 signal, // 5939.81v kHz very poor, USB to avoid WWCR-5935 kHz. (Brandon Jordan-TN-USA, hcdx July 7)

9664.797 R Voz Missionária, Camboriú, 12 July at 0405 UT, and // 5939.831 kHz footprint at 0415 UT on July 12.

5970.030 ZYE523 Radio Itatiaia, Belo Horizonte, weak signal.

6180.005 RNA S=9+25dB, but tiny on 5990.108 kHz footprint at 0425 UT, // 11780.004 kHz at 0442 UT.

6080.034 Probably Brazilian ZYE726 of Radio Marumby, Curitiba PR, 0432 UT.

11815.032 ZYE440 Radio Brasil Central, Goiania, at 0444 UT. Next to 11825 kHz Brother Stair via WRMI Okeechobee FL site. (wb, wwdxc BC-DX TopNews July 12)

4785, R. Congonhas, Congonhas MG, 2201-2204\*, 27/6, anúncios informativos, ID completa e anúncio da freq., ao que se seguiu encerramento abrupto; 25331.

4915, R. Daqui, Goiânia GO, 2130-2143, 27/6, programa de propaganda religiosa inclusive canções a condizer; 44342, QRM da R.Dif.<sup>a</sup> de Macapá, B.

4915, R. Dif.<sup>a</sup>, Macapá AP, 2132-2152, 27/6, noticiário, A Voz do Brasil, às 2200; 23341, QRM da R.Daqui, B.

4985, R. Brasil Central, Goiânia GO, 2124-2140, 26/6, relato de jogo de futebol, anúncios comerciais, comentários; 35332.

5035, R. Educação Rural, Coari AM, 2217-2230, 26/6, texto, aparentemente, A Voz do Brasil; 22331, QRM da R. Aparecida, B.

5990.1, R. Nacional da Amazônia, Parque do Rodeador DF, 2112-2125, 26/6, relato de jogo de futebol; 43432, QRM ajacente. Ligeiro atraso no áudio relativamente a // 6180, 11780.

6010.05, R. Inconfidência, Belo Horizonte MG, 2158-2212, 26/6, texto, anúncios informativos, A Voz do Brasil, às 2200; 34432, QRM da CHINA.

6089.9, R. Bandeirantes, São Paulo SP, 2205-2220, 27/6, conversa sobre a Taça do Mundial, chamadas de ouvintes; 35332. Há bastante tempo que, pelo menos por esta hora, a Bandeirantes não punha um sinal algo perceptível, nesta freq.

9586.4, SRDA, São Paulo SP, 2146-2154, 26/6, propag. relig.; 35433.

9645.42, R. Bandeirantes, São Paulo SP, 2208-2215, 27/6, comentários acerca da Taça da FIFA, chamadas de ouvintes; 32441, QRM adjacente.

9818.7, R. 9 de Julho, São Paulo SP, 0916-desvan. total 0950, 28/6, rubrica de futebol; 15331. Bons DX e melhores. (Carlos Gonçalves, PORTUGAL, dxldyg via DXLD)

Rádio Inconfidência --- A Radio Inconfidencia enviou um eQSL (confirmação) de uma escuta em 15190 kHz ocorrida na Alemanha. O e-mail de quem enviou a confirmação por parte da emissora é gleisonferreira@inconfidencia.com.br As frequências da Inconfidência: 880 / 6010 / 15190 kHz. Uma chance para quem desejar buscar a confirmação dos sinais recebidos da Inconfidência. Sucesso! (Rudolf Grimm, 28 June, radioescutas yg via DXLD)

At the same time [as LRA36, 1930 UT 1 July] Radio Inconfidência Brazil on 15190.11 kHz. Mostly with music, ID at 2006 UT. 73, RX Perseus and End Fed antenna. (Maurits Van Driessche, Belgium, July 2, Hard-Core-DX mailing via WOR 1728, DXLD)

**BULGARIA** - All transmissions of Brother Stair via Secretbrod Spaceline Ltd cancelled

0657-1255 11600 SCB 050 kW 306 deg to WEu English till June 26  
 1257-1500 9400 SCB 050 kW 306 deg to WEu English till June 27  
 1457-1655 9400 SCB 050 kW 306 deg to WEu English till July 02  
 (Ivo Ivanov-BUL, via wwdxc BC-DX TopNews July 11)

**CHILE** - 12365 kHz USB mode, Radio Cooperativa 2110 UT. Widely heard here in Europe during football WORLD CUP Brazil 2014 live transmissions.

Das Relay von Radio Cooperativa aus Chile war um 2110 UT auf 12365 kHz USB mit Vorberichten zum WM-Spiel CHL-AUS zu hoeren. Allerdings wurde um 2124 UTC abgeschaltet. VMC 2130 UT. Um 2130 UTC war dann VMC Charleville aus Australien mit einem Seewetterbericht auf 12365 kHz zu hoeren.  
 (Patrick Robic-AUT, A-DX June 14)

**CHINA** - Transmitter Urumqi 500 kW 308 degr antennas maintenance in China.

11650 URU 1800-2000 UTC off on August 01 - 20  
 17820 URU 0500-0700 UTC off on August 14 - 20

Liebe Hoererinnen und Hoerer,

aufgrund dringender Wartungsarbeiten muss das deutsche Programm von Radio China International auf der Kurzwelle 11650 kHz vom 01.-20. August und auf der Kurzwelle 17820 kHz vom 14.-20. August leider ausfallen.

Vielen Dank fuer Ihr Verstaendnis.

Deutsche Redaktion von CRI

Possible other maintenance work in Urumqi also relates to, acc. to HFCC list:

17820	0500	0700	28NW	URU	500	308	288	Deu	CHN	CRI	RTC
15665	0800	0900	29,30	URU	500	308	216	Rus	CHN	CRI	RTC
15665	0900	1000	29,30	URU	500	308	216	Rus	CHN	CRI	RTC
17570	0900	1000	28N	URU	500	308	288	Eng	CHN	CRI	RTC
13575	1200	1300	29,30	URU	500	308	216	Rus	CHN	CRI	RTC
17630	1200	1300	27-29	URU	500	308	216	Eng	CHN	CRI	RTC
17630	1300	1400	27-29	URU	500	308	216	Eng	CHN	CRI	RTC
17630	1400	1500	27-29	URU	500	308	216	Eng	CHN	CRI	RTC
11790	1500	1600	29,30	URU	500	308	216	Rus	CHN	CRI	RTC
11875	1600	1700	29,30	URU	500	308	216	Rus	CHN	CRI	RTC
13580	1600	1700	29,30	URU	500	308	216	Rus	CHN	CRI	RTC
11875	1700	1800	29,30	URU	500	308	216	Rus	CHN	CRI	RTC
13640	1700	1800	29,30	URU	500	308	216	Rus	CHN	CRI	RTC
9685	1730	1830	27-29	URU	500	308	218	Chn	CHN	CRI	RTC
7205	1800	1900	29,30	URU	500	308	216	Rus	CHN	CRI	RTC
11650	1800	2000	28NW	URU	500	308	288	Deu	CHN	CRI	RTC
13700	1800	1900	27SE	URU	500	308	216	Nan	CHN	CRI	RTC
7265	1830	1900	28SE	URU	500	308	218	Bu1	CHN	CRI	RTC
6090	1900	1930	28E	URU	500	308	216	Ron	CHN	CRI	RTC
7415	1900	1930	28NE	URU	500	308	218	Ces	CHN	CRI	RTC
9560	1900	1930	28N	URU	500	308	216	Hun	CHN	CRI	RTC
6090	1930	2000	28E	URU	500	308	216	Ron	CHN	CRI	RTC
7265	1930	2030	27,28	URU	500	308	216	Epo	CHN	CRI	RTC
7415	1930	2000	28NE	URU	500	308	218	Ces	CHN	CRI	RTC
9745	1930	2030	27,28	URU	500	308	216	Epo	CHN	CRI	RTC
7305	2000	2100	28N	URU	500	308	218	Pol	CHN	CRI	RTC
7325	2000	2030	28S	URU	500	308	216	Srp	CHN	CRI	RTC
7265	2030	2130	28SW	URU	500	308	216	Ita	CHN	CRI	RTC
9430	2030	2230	27SE	URU	500	308	216	Fra	CHN	CRI	RTC
9720	2030	2100	28SE	URU	500	308	216	Bu1	CHN	CRI	RTC
7445	2130	2200	28N	URU	500	308	216	Hun	CHN	CRI	RTC
7250	2200	2400	37NW	URU	500	308	216	Spa	CHN	CRI	RTC
7260	2200	2300	37NW	URU	500	308	218	Por	CHN	CRI	RTC
9865	2300	2400	27-29	URU	500	308	218	Chn	CHN	CRI	RTC

(wb, wwdxc BC-DX TopNews July 4)

**CONGO** - 6115 Radio Congo, Brazzaville, logged at 1731-1820 UT on 29 June, dialecto local, texto, musica pop' africano, emissao em frances, a partir das 1800 UT, ID, noticiario Le Journal; 25442. Pelas 1831 UT, a emissao estava fora do ar, provavelmente, porque tera fechado pelas 1830 UT. (Carlos Goncalves-POR, dxld July 2)

**GERMANY** - Das Kurzwellenzentrum Kall hat mit Stand 1. Juli 2014 folgende Sendungen:

3985 kHz

00.00-19.30 Radio 700 - Schlager & Oldies, darin:  
 03.30-03.45 Mo-Sa Missionswerk Freundesdienst  
 10.00-10.15 Missionswerk Freundesdienst  
 15.00-15.30 Radio Slowakei International in Deutsch  
 16.30-16.45 Mo-Sa Missionswerk Freundesdienst  
 17.00-17.30 Radio Slowakei International in Franzoesisch  
 18.30-19.00 Radio Slowakei International in Deutsch  
 21.00-23.00 Radio 700 - Schlager & Oldies

6005 kHz

06.00-18.00 Radio 700 - Schlager & Oldies, darin:  
 06.00-08.00 Radio Belarus in Deutsch  
 09.00-10.00 4. So Radio Gloria International  
 10.00-10.15 Missionswerk Freundesdienst  
 15.00-15.30 Radio Slowakei International in Deutsch  
 16.30-16.45 Mo-Sa Missionswerk Freundesdienst  
 17.00-17.30 Radio Slowakei International in Franzoesisch

7310 kHz.

06.00-18.00 Radio 700 - Schlager & Oldies, darin:  
 08.00-09.00 2. So Ichtys-Radio  
 10.00-10.15 Missionswerk Freundesdienst  
 15.00-15.30 Radio Slowakei International in Deutsch  
 16.30-16.45 Mo-Sa Missionswerk Freundesdienst  
 17.00-17.30 Radio Slowakei International in Franzoesisch  
 (wwdxc BC-DX TopNews July 1)

Nachdem Wertachtal seit 2013 außer Betrieb ist, soll bis Ende 2014 die Sendeanlage komplett abgebaut werden.  
 <<http://www.augsburger-allgemeine.de/schwabmuenchen/Ausgefunkt-70-Antennen-und-30-Tuerme-verschwinden-id30526577.html>>  
 (Thomas DL1TS)

6150 UNKNOWN NEW STATION TEST. 1312 UT, June 28, Nonstop-Mx.  
 Pop, Country, 1319 UT close down, no ID.  
 (Markus Weidner-D, A-DX June 28; Internet: <[www.markusweidner.de](http://www.markusweidner.de)>)

Die 6150 kHz soll wohl aus Datteln in NRW kommen. In der neuen HFCC Liste steht das Ding mit 15 kW von dort aus drin, unbekannt - wer sich dahinter verbirgt. Lassen wir uns diesbeueglich ueberraschen ...  
 6150 kHz 0600-1900 UT zones 18,27,28 15kW antiTUtype700, daily 03-06-2014 to 26-10-2014 NEW FNA, TENT.  
 (June 26)

comment: KLL Kall is NOT involved. Temporary appointment of a replacement construction only, is logged till the new station location is registered at ITU Geneve transmitter site list.  
 (wb, wwdxc BC-DX TopNews June 29)

**GERMANY / KUWAIT / SRI LANKA** - Radio Free Iraq Lampertheim on 17690 kHz at 0630 UT June 20. DXing by sea side in Alexandria, northern Egypt, I noticed Radio Free Iraq on 17690 kHz around 0630 UT with reports about the current situation in Iraq from their reporters in Amman, Jordan and Sweden followed by ID and an Iraqi song, then giving FM frequencies in Iraq. (Tarek Zeidan-EGY, dxld June 20)

R Azadi scheduled is registered as 17690 R. AZADI (R. Free Afghanistan) 0500-0730 UT in Dari and Pashto 100kW 108deg Lampertheim D IBB RFAF a14 and also 17670 kHz via Kuwait. But heard ARABIC instead! S=9+15dB or -60dBm at 0700 UT in Eastern Europe. They put the wrong feed circuit at Lampertheim. On 17670 heard usual Dari program.  
 17690 A half minute signal overlap co-channel at 0730 UT, both signals LAM and KWT on air on 17690 kHz, Now 0731 UT R Azadi in the clear on 15090 and 17690 kHz both from Kuwait.

Program on shortwave is 3 seconds behind satellite signal  
 Hotbird 13.0 E 12226 MHz vertical  
 satellite channel SID: 216 AID: 1422 "Kabul 216" ID.  
 <<http://www.satindex.de/sat/hotbird-all/>>  
 (wb, wwdxc BC-DX TopNews June 20)

#### **INDIA** - AIR External Service latest change:

6155 Urdu 1430-1930 now via Delhi Khampur 250 kw (ex Bengaluru 500 kW)  
 The latest AIR External Services schedule is in: <http://qsl.net/vu2jos/es/time.htm>  
 (Jose Jacob, VU2JOS, National Institute of Amateur Radio, Hyderabad, India, UT July 3, dx\_india yg via DXLD)

#### **INDONESIA** - 9525.88, V. of Indonesia, Jun 21 1309-1319, 34443, English, News, ID at 1318.

9525.90, V. of Indonesia, Jun 26 1330-1339, 34443, English, Talk, ID at 1334, URL announce at 1336.  
 (Kouji Hashimoto, JAPAN, RX, IC-R75, NRD-525+RD-9830, NRD-515, NRD-345, Satellit 750, DE-1121; ANT, 130m Sloper Wire, DXLD)

9525.87, Voice of Indonesia, \*0947-1139, July 1. 1005-1055 in English with "Exotic Indonesia" joint production between VOI Jakarta and "95.3 FM, RRI Denpasar" (Bali); news; "Today in History"; live time check for "it's 6:30" in Bali (1030 UT); chatting about activities in Bali.

1100 - Chinese language segment preempted by special "live program" in English; many spots about the upcoming presidential and VP election, between pop songs; segment about South Kalimantan and their local music.  
 (Ron Howard, San Francisco at Ocean Beach, CA, E1 & CR-1, dxldyg via WOR 1728, DXLD)

#### **IRAN** - Special broadcasts of Voice of Islamic Rep of Iran for Ramazan:

1923-0120	7410	SIR	500	kw	329	deg	to	WAs	Azeri	June 28-July 29
2153-2350	9610	KAM	500	kw	250	deg	to	NEAf	Arabic	June 28-July 29
2223-0050	6090	KAM	500	kw	073	deg	to	CAs	Tajik	June 28-July 29
2253-2350	5940	SIR	500	kw	320	deg	to	NE/ME	Kurdish	June 28-July 29
2353-0050	6000	KAM	500	kw	non-dir	to	NE/ME	Kurdish	June 28-July 29	
0020-0120	9845	SIR	500	kw	310	deg	to	NE/ME	Turkish	June 28-July 29
0123-0320	6060	KAM	500	kw	non-dir	to	NE/ME	Azeri	June 28-July 29	

(Ivo Ivanov-BUL, via wwdxc BC-DX TopNews June 26)

Frequency change for the special transmissions of Voice of Islamic Republic of Iran VOIRI/IRIB in Azeri for Ramazan from June 28 to July 29: 1923-0120 NF 6060 SIR 500 kW / 329 deg to WeAs, x 7410. (DXMIX 859)

**MADAGASCAR** - 6135.00 R Madagasikara, on June 16 at 0158 UT, carrier on already, next to R Sta. Cruz 6134.83, but in the clear 0215:03 UT when RSC carrier finally off. Faded up nicely, 0226 UT sung NA?, 0229 UT Malagasy male & fem "kilohertz" announcement, 0231 UT Booker T. & MG's "The time is tight", Carl Douglas "Kung fu fighting" but signal strength definitely decreasing by now until covered by co/channel VOA carrier 0258 UT. TADIL-A bonker occasionally reported here by Glenn Hauser was only just about audible so did not really spoil the fun. Very pleased to hear MDG so clearly after several mornings of only being able to make out their carrier, cf my previous report. (Martien Groot-HOL, via Christoph Ratzer June 16)

#### **MADAGASCAR / RWANDA / UAE** - Some changes of Deutsche Welle from June 25:

0800-0830	17800	DHA	250	kw	050	deg	to	WAs	Pashto,	exKIG
0830-0900	17800	DHA	250	kw	050	deg	to	WAs	Dari,	exKIG
1330-1400	15595	KIG	250	kw	030	deg	to	WAs	Dari,	cancelled
1400-1430	15595	KIG	250	kw	030	deg	to	WAs	Pashto,	cancelled
1800-1900	17860	MDC	250	kw	305	deg	to	WAF	Hausa,	ex310deg

(Ivo Ivanov-BUL, via wwdxc BC-DX TopNews June 25)

**PERU** - 5980, R. Chaski, Cuzco, 2225-2236, 28/6, castelhana, coro religioso, anúncios informativos, propaganda religiosa; 34432, QRM adjacente de 5976.1-BLS. Bons DX e melhores.  
 (Carlos Gonçalves, PORTUGAL, dxldyg via DXLD)

#### **PHILIPPINES** - RADYO PILIPINAS OVERSEAS (DZRP) (Gov):

kHz: 9925, 12010, 12120, 15190, 15640, 17820 Summer Schedule 2014  
 English 0200-0330 daily ME 12010, 15640, 17820  
 Filipino 1730-1930 daily ME 9925, 12120, 15190  
 (WRTH supplement)



**SOUTH AFRICA** - 3320 at 0345-0350. SABC Meyerton on July 4. Fair to good signal of a female announcer in Afrikaans, and a reporter's segment in English about Boko Haram in Nigeria.

3345 at 0335-0345 UT. Channel Africa on July 4. Poor to fair signal in English with male announcer. Mentions of African cities; seemed to be a commentary or editorial.  
(Guy Atkins Puyallup-WA-USA, DXplorer July 4)

**SRI LANKA** - Additional frequency of FEBA Radio in various languages

1330-1345 9720 TRM 125 kW 345 deg to SAs English Mo  
 1330-1345 9720 TRM 125 kW 345 deg to SAs Telugu Tue/Thu/Fr  
 1330-1345 9720 TRM 125 kW 345 deg to SAs Tamil Wed  
 1330-1345 9720 TRM 125 kW 345 deg to SAs Kuvi Sa  
 1330-1345 9720 TRM 125 kW 345 deg to SAs Kannada Su  
 1345-1400 9720 TRM 125 kW 345 deg to SAs Tamil Mo/Wed/Sa  
 1345-1400 9720 TRM 125 kW 345 deg to SAs Malayalam Tue/Thu/Fr/Sa

Note: The frequency is not registered in HFCC Database.

{Trincomalee reported to be on odd footprint 9719.916 kHz lately, wb.}  
(Ivo Ivanov-BUL, via wwdxc BC-DX TopNews June 17)

**TAIWAN** - From Sunday June 8 Radio France Internationale make a time and frequency changes for the Chinese broadcasts shortwave as follows

1100-1300 9955 PA0 250 kW 352 deg to EAs, new transmission  
 2200-2300 7310 TSH 300 kW 325 deg to EAs, no change  
 2200-2300 9660 PA0 250 kW 352 deg to EAs, addit. frequency

Cancelled broadcasts:

0930-1030 7325 PA0 250 kW 352 deg to EAs  
 0930-1030 11875 PA0 250 kW 352 deg to EAs  
 2300-2400 9955 PA0 250 kW 352 deg to EAs  
(Ivo Ivanov-BUL, via wwdxc BC-DX TopNews June 17)

11914.847 In order to check Brazilian Rádio Gaúcha Porto Alegre RS on remote SDR unit in Nara-JPN and Brisbane-AUS, I heard instead RTI Indonesian via Tainan bcst center at S=9 level. Aoki list wrongly only 10-11 UT slot, but Indonesian female reader noted already at 0925 UT June 14, so WRTH 2014 spring PDF supplement show real 09-11 UT slot. Hit a little bit co-channel of even frequency 11915.0 of CNR2 Business Radio from Baoji-CHN.  
(wb, wwdxc BC-DX TopNews June 14)

**TAJIKISTAN** - 4765.05, Tajik R., Jun 20 1326-1341, 35333-35433, Tajik, Music and talk, ID at 1340.

(Kouji Hashimoto, JAPAN, RX, IC-R75, NRD-525+RD-9830, NRD-515, NRD-345, Satellit 750, DE-1121; ANT, 130m Sloper Wire, DXLD)

4765.05, \*2300-2310 27.06, Tajik R, Yangiyul. Suddenly opened with talk in Tajik by woman, musical interlude, talk and ID by man: "In jo Dushanbe", 2303 martial orchestra music and song 45343.

(Anker Petersen, Denmark, Just a few recent loggings here from Skovlunde on my AOR AR7030PLUS with 28 metres of longwire, via Dario Monferini, playdx yg via DXLD)

**UNITED KINGDOM** - Guide to current shortwave broadcasts from the United Kingdom - July 2014:

All transmissions from Woofferton, Shropshire 02.43W 52.19N

Time/UTC	Daily	u.o.s.	Station	Language	Target	kHz	kW	(Azi)
0100-0128	Voice of Vietnam	English	North America	12005	250	(282)		
0130-0228	Voice of Vietnam	Vietnamese	North America	12005	250	(282)		
0200-0430	NHK R Japan	Japanese	Europe	6155	250	(082)		
0230-0300	Voice of Vietnam	English	North America	12005	250	(282)		
0300-0400	BBC Arabic	North Africa	5875	250	(140)			
0400-0500	BBC Arabic	North Africa	9410	250	(137)			
0500-0530	NHK R Japan	English	Europe	5975	250	(140)		
0529-0600	BBC Hausa	West Africa	9440	250	(170)			
0600-0629	BBC French	North Africa	9915	300	(180)			
0600-0629	BBC French	North Africa	11865	250	(170)			
0600-0700	BBC English	Central Africa	15105	250	(158)			
0629-0700	BBC Hausa	West Africa	15490	250	(165)			
0700-0800	KBS World R	Korean	Europe	9860	250	(102)		

1300-1500 RFE/RL Russian Russia 13745 300 (075 )  
 1500-1600 NHK R Japan Japanese Europe 17765 250 (082 )  
 1545-1615 BBC Tamil South Asia 15470 250 (092 )  
 1630-1700 BBC Sinhalese South Asia 15470 250 (092 )  
 1700-1730 IBRA R Arabic Middle East 12045 250 (114 )  
 1700-1730 BBC Dari West Asia 13660 250 (075 )  
 1730-1800 BBC Pashto West Asia 13660 250 (075 )  
 1730-1900 IBRA R Arabic North Africa 15510 250 (140 )  
 1800-1830 BBC French North Africa 15180 250 (170 )  
 1800-1900 KBS World R Russian Russia 15360 250 (074 )  
 1800-2000 BBC English West Africa 13660 250 (165 )  
 1900-1930 IBRA R Arabic North Africa 7425 300 (140 )  
 1900-1930 Voice of Vietnam Russian Russia 9890 300 (075 )  
 1900-2000 KBS World R French Europe 6145 250 (172 )  
 1900-2000 R Taiwan Int German Europe 6185 250 (078 )  
 1900-2000 R Taiwan Int French Europe 7325 250 (140 )  
 1900-1930 IBRA R Fulfullde West Africa 11875 300 (182 )  
 1930-1945 Su-Wed IBRA R Moore West Africa 11875 300 (182 )  
 1930-1945 Thu-Sa IBRA R Tamajeq West Africa 11875 300 (182 )  
 1945-2000 Fr-Tue IBRA R Jula West Africa 11875 300 (182 )  
 1945-2000 Wed-Thu IBRA R Malinke West Africa 11875 300 (182 )  
 1930-1945 IBRA R Arabic North Africa 12070 250 (140 )  
 1930-2000 IBRA R Arabic North Africa 9490 300 (102 )  
 2000-2100 KBS World R German Europe 3955 250 (114 )  
 2000-2100 BBC English West Africa 9915 250 (170 )  
 2030-2130 Voice of Vietnam Vietnamese Europe 5930 250 (114 )  
 2100-2145 HCJB Arabic North Africa 7300 250 (170 )  
 2130-2200 Mon-Fri Voice of America Bambara West Africa 9620 300 (180 )

DRM transmissions on shortwave from the UK:

0500-0600 BBC DRM Mix English Western Europe 3955 100 (114 )  
 1100-1130 Fr NHK R Japan English Western Europe 9760 100 (105 )  
 1100-1130 Sa KBS World R English Western Europe 9760 100 (105 )  
 1130-1200 Fr NHK R Japan Russian Western Europe 9760 100 (105 )  
 (Compiled by Tony Rogers / British DX Club (tony@bdxc.org.uk), June BDXC-UK Communication via DXLD)

**U.S.A.** - IBB Washington schedule from July 1st, acc WRTH supplement May 25 and July 4, 2014, and other various sources:

BBG - AFIA DARFUR RADIO (Gov)

Arabic to Sudan Days Area kHz

0300-0330 daily SDN 6135/VAT, 7260/STP, 9815/KWT  
 1800-1830 daily SDN 9645/F, 11845/VAT, 13715/STP  
 1900-1930 daily SDN 9600/STP, 9775/VAT, 12040/KWT

BBG - RADIO FARDA (Gov)

Farsi Days Area kHz

0000-0100 daily IRN 5860/CLN-IRA  
 0000-0130 daily IRN 7585/CLN-IRA  
 0000-2400 daily IRN 1575/UAE  
 0030-0230 daily IRN 5940/Biblis  
 0100-0530 daily IRN 5860/KWT  
 0130-0400 daily IRN 15690/Lam  
 0230-0600 daily IRN 9760/Biblis  
 0230-0930 daily IRN 15680/Biblis  
 0400-1000 daily IRN 13860/Lam  
 0400-1200 daily IRN 15690/CLN-IRA  
 0530-0630 daily IRN 17840/CLN-IRA  
 0600-0830 daily IRN 7220/KWT  
 0630-1130 daily IRN 17840/Biblis  
 0830-1400 daily IRN 7435/KWT  
 0930-1230 daily IRN 15680/TH  
 1100-1230 daily IRN 17880/Lam  
 1200-1600 daily IRN 15690/Biblis

1230-1430 daily IRN 15680/Lam  
 1230-1530 daily IRN 17880/Biblis  
 1300-1530 daily IRN 12005/CLN-IRA  
 1400-1800 daily IRN 11540/CLN-IRA  
 1530-1700 daily IRN 12005/TH  
 1530-1730 daily IRN 5860/CLN-IRA  
 1700-1730 daily IRN 7585/TH  
 1730-2230 daily IRN 5860/KWT  
 1730-2400 daily IRN 7585/CLN-IRA  
 2230-0100 daily IRN 5860/CLN-IRA

BBG - RADIO FREE AFGHANISTAN (Gov)

Dari Days Area kHz

0300-0330 daily AFG 1296/Kabul, 17670/KWT, 17690/CLN-IRA  
 0430-0500 daily AFG 17690/CLN-IRA  
 0430-0530 daily AFG 1296/Kabul, 17670/KWT  
 0500-0530 daily AFG 17690/Lam  
 0630-0730 daily AFG 1296/Kabul, 17670/KWT, 17690/Lam  
 0830-0930 daily AFG 1296/Kabul, 15090/KWT, 17690/KWT  
 1030-1130 daily AFG 1296/Kabul, 15090/KWT, 17690/KWT  
 1230-1330 daily AFG 1296/Kabul, 15090/KWT, 17690/KWT  
 1400-1430 daily AFG 1296/Kabul, 15090/KWT, 17690/KWT

Pashto Days Area kHz

0230-0300 daily AFG 1296/Kabul, 17670/KWT, 17690/TH  
 0330-0430 daily AFG 1296/Kabul, 17670/KWT, 17690/CLN-IRA  
 0530-0630 daily AFG 1296/Kabul, 17670/KWT, 17690/Lam  
 0730-0830 daily AFG 1296/Kabul, 15090/KWT, 17690/KWT  
 0930-1030 daily AFG 1296/Kabul, 15090/KWT, 17690/KWT  
 1130-1230 daily AFG 1296/Kabul, 15090/KWT, 17690/KWT  
 1330-1400 daily AFG 1296/Kabul, 15090/KWT, 17690/KWT

BBG - RADIO FREE EUROPE/RADIO LIBERTY (RFE/RL) (Gov)

Avar Days Area kHz

0300-0320 daily Cau 9740/Biblis, 11850/Lam  
 1500-1520 daily Cau 11900/Lam, 15620/N

Belarusian Days Area kHz

0400-0500 daily BLR 612/LTU, 6075/Biblis, 6105/Lam  
 1500-1600 daily BLR 6105/Lam  
 1500-1800 daily BLR 5930/Biblis  
 1600-1800 daily BLR 6105/Lam  
 1800-2100 daily BLR 612/LTU

Chechen Days Area kHz

0320-0340 daily Cau 9740/Biblis, 11850/Lam  
 1520-1540 daily Cau 11900/Lam, 15620/N

Circassian Days Area kHz

0340-0400 daily Cau 9740/Biblis, 11850/Lam  
 1540-1600 daily Cau 11900/Lam, 15620/N

Russian Days Area kHz

0300-0400 daily RUS 17770/PH  
 0300-0500 daily RUS 7435/Biblis  
 0300-0700 daily RUS 9635/Lam  
 0400-0700 daily RUS 11850/Lam  
 0500-0700 daily RUS 17770/KWT  
 0800-0900 daily RUS 17770/TH  
 0800-1000 daily RUS 15130/Lam  
 0900-1000 daily RUS 17770/PH  
 1200-1300 daily RUS 13745/Lam, 17770/TH  
 1200-1500 daily RUS 15285/Lam  
 1300-1400 daily RUS 17770/Lam

# 12

1300-1500 daily RUS 13745/Wof  
1400-1500 daily RUS 17530/Lam  
1500-1700 daily RUS 11780/Biblis, 13745/Lam  
1600-2000 daily RUS 9840/Lam  
1700-1800 daily RUS 11800/Biblis\*, 15620/Biblis\*  
1700-1900 daily RUS 11760/Lam  
1700-2000 daily RUS 5995/Lam  
1900-2000 daily RUS 7455/TH  
2000-2100 daily RUS 5995/KWT

## Tajik Days Area kHz

1400-1500 daily TJK 12035/KWT, 15460/CLN-IRA  
1500-1600 daily TJK 15460/F  
1500-1700 daily TJK 12035/Biblis  
1600-1700 daily TJK 9760/KWT

## Turkmen Days Area kHz

1400-1500 daily TKM 12025/Biblis, 15255/F  
1500-1600 daily TKM 12025/TH, 15255/Lam

## Uzbek Days Area kHz

1400-1500 daily UZB 13615/KWT, 15480/Lam  
1600-1700 daily UZB 7555/TH, 11790/KWT

Key: \* Special service for Caucasus:  
"Ekho Kavkaza" ("Echo of the Caucasus")

## BBG - RADIO MARTI (Gov)

### Spanish Days Area kHz

0000-0300 daily CUB 6030/Gr, 7365/Gr  
0000-2400 daily CUB 1180/mth  
0300-0700 .twtfss CUB 7405/Gr  
0300-0900 .twtfss CUB 6030/Gr  
0700-0900 .twtfss CUB 5980/Gr  
0900-1000 daily CUB 5980/Gr  
0900-1200 daily CUB 6030/Gr  
1000-1300 daily CUB 9805/Gr  
1200-1400 daily CUB 7405/Gr  
1300-2000 daily CUB 13605/Gr  
1400-2400 daily CUB 11930/Gr  
2000-2400 daily CUB 9565/Gr

## BBG - RADIO MASHAAL (Gov)

### Pashto Days Area kHz

0400-0900 daily AFG,PAK 15360/N  
0400-1300 daily AFG,PAK 621/kho, 12130/KWT, 15740/TH  
0900-1000 daily AFG,PAK 15360/KWT  
1000-1200 daily AFG,PAK 15360/Biblis  
1200-1300 daily AFG,PAK 15360/CLN-IRA

## BBG - RADIO SAWA (Gov)

### Arabic Days Area kHz

0000-0100 mt.tfss ME,NAf 990/cgr  
0000-2400 daily IRQ 1593/KWT  
0000-2400 daily ARS,YEM 1548/KWT  
0100-2200 daily ME,NAf 990/cgr  
1645-0400 daily NAf 1431/Djibouti  
2200-2400 m.wtfss ME,NAf 990/cgr

## BBG - VOA ASHNA RADIO (Gov)

### Dari Days Area kHz

0100-0130 daily WAs 1296/Kabul, 11925/KWT, 15090/TH  
0200-0230 daily WAs 1296/Kabul, 11925/KWT, 15090/TH  
1500-1630 daily WAs 1296/Kabul, 7495/KWT, 9790/KWT, 15090/KWT

## Pashto Days Area kHz

0030-0100 daily WAs 1296/Kabul, 11925/KWT, 15090/TH  
 0130-0200 daily WAs 1296/Kabul, 11925/KWT, 15090/TH  
 1430-1500 daily WAs 1296/Kabul, 7495/KWT, 9790/KWT, 15090/KWT  
 1630-1730 daily WAs 1296/Kabul, 7495/KWT, 9790/PH, 12140/KWT

## BBG - VOA DEEWA RADIO (Gov)

## Pashto Days Area kHz

0100-0130 daily AFG, PAK 12035/TH  
 0100-0300 daily AFG, PAK 12020/CLN-IRA  
 0100-0400 daily AFG, PAK 621/kho, 13840/CLN-IRA  
 0130-0400 daily AFG, PAK 12035/KWT  
 0300-0400 daily AFG, PAK 12020/KWT  
 1300-1400 daily AFG, PAK 13690/CLN-IRA  
 1300-1430 daily AFG, PAK 7495/TH  
 1300-1500 daily AFG, PAK 9695/TH  
 1300-1600 daily AFG, PAK 9310/CLN-IRA  
 1300-1900 daily AFG, PAK 621/kho  
 1400-1500 daily AFG, PAK 13690/Lam  
 1430-1500 daily AFG, PAK 9335/TH  
 1500-1600 daily AFG, PAK 13690/TH

## Pashto Days Area kHz

1500-1700 daily AFG, PAK 9355/TH  
 1500-1900 daily AFG, PAK 9335/CLN-IRA  
 1600-1700 daily AFG, PAK 13690/CLN-IRA  
 1600-1900 daily AFG, PAK 9310/TH  
 1700-1800 daily AFG, PAK 9780/F, 9965/TH  
 1800-1900 daily AFG, PAK 9780/TH, 9965/KWT

## BBG - VOA RADIO AAP KI DUNYAA (Gov)

## Urdu Days Area kHz

1400-0200 daily SAs 972dsb\*

Key: \* Including: English at 1900-1905, 2000-2005, 2100-2105, 2200-2205, 2300-2305 & 0000-0005, plus Pashto (Deewa) at 2005-2100 & 0005-0100.

## BBG - VOA STUDIO 7 (Gov)

## English Days Area kHz

1720-1740 .....ss ZWE 909/BOT, 4930/BOT, 5940/BOT, 15455/STP  
 1730-1800 mtwt... ZWE 909/BOT, 4930/BOT, 5940/BOT, 15455/STP

## English/Ndebele/Shona Days Area kHz

1800-1830 ....f.. ZWE 909/BOT, 4930/BOT, 5940/BOT, 15455/CLN-IRA  
 1830-1900 mtwtf.. ZWE 909/BOT, 5940/BOT, 15455/CLN-IRA

## Ndebele Days Area kHz

1730-1800 ....f.. ZWE 909/BOT, 4930/BOT, 5940/BOT, 15455/STP  
 1740-1800 .....ss ZWE 909/BOT, 4930/BOT, 5940/BOT, 15455/STP  
 1800-1830 mtwt... ZWE 909/BOT, 4930/BOT, 5940/BOT, 15455/CLN-IRA

## Shona Days Area kHz

1700-1720 .....ss ZWE 909/BOT, 4930/BOT, 5940/BOT, 15455/STP  
 1700-1730 mtwtf.. ZWE 909/BOT, 4930/BOT, 5940/BOT, 15455/STP

## BBG - VOICE OF AMERICA (VOA) (Gov)

## Amharic Days Area kHz

1600-1630 mtwtf.. EAf 1431/Djibouti  
 1800-1900 daily EAf 11905/KWT, 12005/F, 12080/F, 12140/CLN-IRA, 13870/N

## Bambara Days Area kHz

2130-2200 mtwtf.. WAF 9620/ASC, 12040/Wof, 13670/Gr, 15110/Gr

## Bengali Days Area kHz

1600-1700 daily SAs 1575/TH-/TH-bph

Burmese Days Area kHz  
0000-0030 daily SEA 1575/TH-/TH-bph, 5955/TH

Burmese Days Area kHz  
0130-0230 daily SEA 7305/TH, 15115/PH, 17780/PH  
1200-1230 daily SEA 11965/PH, 15565/PH, 17680/PH  
1430-1500 daily SEA 1575/TH-/TH-bph, 12075/Tin  
1430-1530 daily SEA 11965/CLN-IRA  
1430-1630 daily SEA 5885/PH, 9320/PH  
1530-1600 daily SEA 1575/TH-bph  
2330-0030 daily SEA 7430/CLN-IRA, 9325/PH  
2330-2400 daily SEA 6185/TH

Cantonese Days Area kHz  
1300-1400 daily SEA 7365/TH  
1400-1500 daily SEA 7365/PH

Chinese Days Area kHz  
0000-0100 daily EAs 9880/PH, 15385/PH, 15565/TH, 17560/PH  
0900-1100 daily EAs 11785/TH, 13740/TH, 17485/TH, 21695/PH  
0900-1300 daily EAs 11825/PH  
1100-1200 daily EAs 9845/PH, 11785/PH  
1100-1300 daily EAs 6110/TH, 15250/PH  
1200-1300 daily EAs 11785/TH  
1300-1400 daily EAs 11785/PH, 11805/Saipan, 15115/TH  
1300-1500 daily EAs 6110/PH  
1400-1500 daily EAs 9845/PH, 11615/PH, 11835/PH  
2200-2300 daily EAs 6135/TH, 9845/PH

English Days Area kHz  
0030-0100 daily SEA 1575/TH-bph  
0230-0300 .....s NAm 5745/Gr\*\*  
0300-0430 daily Af 1530/STP  
0300-0600 daily SAf 4930/BOT  
0300-0400 daily Af 6080/BOT  
0300-0700 daily Af 909/BOT, 15580/BOT  
0400-0500 daily Af 4960/STP  
0400-0700 daily Af 6080/STP  
0600-0700 daily Af 1530/STP  
0930-1000 .....s. NAm 5745/Gr\*\*  
1100-1200 .....ss SEA 1575/TH-bph  
1400-1500 daily Af 15580/STP  
1400-1700 daily Af 6080/STP  
1400-1700 daily SAf 4930/BOT  
1500-1600 daily Af 17895/BOT  
1500-1900 daily Af 15580/BOT  
1600-1630 .....s. Eu 17860/Gr\*\*  
1600-1700 daily Af 909/BOT, 1530/STP  
1630-1700 mtwtf.. SDN 11995/N\*, 13870/F\*, 15180/VAT\*  
1700-1730 daily Af 6080/RSA  
1700-1800 daily Af 11845/VAT  
1730-1830 daily Af 6080/STP, 17895/Gr  
1800-1830 .....ss Af 4930/BOT  
1800-1900 .....ss Af 909/BOT  
1830-2030 daily Af 6080/BOT  
1830-2100 daily SAf 4930/BOT  
1900-1930 daily Af 15580/VAT  
1900-2100 daily Af 909/BOT  
1930-2000 .....s Eu 15670/Gr\*\*  
1930-2200 daily Af 15580/BOT  
2000-2200 daily Af 1530/STP  
2030-2100 .....ss Af 4940/STP  
2030-2200 daily Af 6080/BOT  
2230-2400 ....fs. SEA 1575/TH-bph

## French Days Area kHz

0530-0600 mtwtf.. Af 1530/STP, 9885/STP  
 0530-0630 mtwtf.. Af 4960/STP, 6095/STP, 13830/BOT  
 0600-0630 mtwtf.. Af 9885/Gr  
 1100-1130 .....s. Af 12030/STP, 13735/STP, 15715/Gr, 17850/TH  
 1830-1900 daily Af 9810/CLN-IRA  
 1830-1930 daily Af 17530/STP  
 1830-2000 daily Af 1530/STP  
 1900-1930 mtwtf.. Af 9810/BOT  
 1930-2030 daily Af 9810/BOT, 17530/Gr  
 2000-2030 daily Af 6070/STP, 11900/STP, 15730/Gr  
 2030-2100 .....s Af 9885/STP, 15730/Gr  
 2030-2100 .....ss Af 11900/CLN-IRA, 15185/BOT  
 2100-2130 mtwtf.. Af 9620/BOT, 9675/STP, 9885/STP, 11900/STP

## Hausa Days Area kHz

0500-0530 daily Af 1530/STP, 4960/STP, 6035/ASC, 11875/N//F  
 0700-0730 daily Af 4960/STP, 12070/STP, 13725/STP  
 1500-1530 daily Af 11750/STP, 12085/STP, 17700/VAT  
 2030-2100 .....s. Af 9885/STP, 15730/Gr  
 2030-2100 mtwtf.. Af 4940/STP, 7325/STP, 9620/STP, 12040/N  
 2030-2100 mtwtfs. Af 6035/STP

## Khmer Days Area kHz

1330-1430 daily SEA 1575/TH-bph  
 2200-2230 daily SEA 1575/TH-bph

## Kinyarwanda/ Kirundi Days Area kHz

0330-0400 daily EAf 7325/STP, 7340/BOT, 11905/KWT  
 0400-0430 .....ss EAf 7325/STP, 7340/BOT, 11905/KWT  
 1600-1630 .....s. EAf 11750/RSA, 15460/STP, 17530/STP  
 1830-1900 mtwtf.. EAf 11865/VAT, 13785/STP

## Korean Days Area kHz

1200-1300 daily EAs 9490/Tin  
 1200-1500 daily EAs 1188seo, 7460/PH, 15780/PH  
 1300-1500 daily EAs 11935/Tin  
 1900-2100 daily EAs 5875/TH, 5915/PH, 7365/TH

## Kurdish Days Area kHz

0500-0600 daily ME 11995/VAT, 15560/CLN-IRA, 17870/Biblis  
 1400-1500 daily ME 15470/BOT, 17870/CLN-IRA  
 1700-1800 daily ME 7365/Biblis, 9850/Biblis, 11995/CLN-IRA

## Lao Days Area kHz

1230-1300 daily SEA 1575/TH-bph

## Oromo Days Area kHz

1730-1800 mtwtf.. EAf 11905/CLN-IRA, 12005/F, 12080/STP, 12140/CLN-IRA, 13870/TH

## Portuguese Days Area kHz

1630-1700 ....f.. Af 13630/CLN-IRA, 15720/BOT  
 1700-1800 daily Af 1530/STP, 13630/BOT, 15720/Gr  
 1800-1830 mtwtf.. Af 13630/BOT, 15720/CLN-IRA

## Somali Days Area kHz

0330-0400 daily EAf 11750/VAT, 13680/BOT, 15620/CLN-IRA  
 1300-1400 daily EAf 15620/CLN-IRA, 17530/VAT  
 1600-1630 .....ss EAf 1431/Djibouti  
 1600-1700 daily EAf 15620/BOT  
 1600-1800 daily EAf 12055/VAT  
 1700-1800 daily EAf 13680/KWT

## Swahili Days Area kHz

1630-1700 daily Eaf 15265/KWT, 15460/STP, 17600/STP

Tibetan Days Area kHz

0000-0100 daily EAs 7250/KWT, 9855/CLN-IRA, 13685/TH+  
 0300-0400 daily EAs 15130/TH, 17735/PH  
 0300-0600 daily EAs 21630/PH+  
 0400-0500 daily EAs 15210/TH, 17735/TH  
 0500-0600 daily EAs 15265/TH, 17490/TH  
 1400-1500 daily EAs 9920/TH, 17515/TH, 17570/Lam {Mo,We,Fr only 17485/TH}  
 1600-1700 daily EAs 7545/PH, 9565/TH, 15505/Biblis+

Tigrinya Days Area kHz

1900-1930 mtwtf.. Eaf 11905/UAE, 12005/CLN-IRA, 12080/F, 12140/CLN-IRA, 13870/N

Vietnamese Days Area kHz

1300-1330 daily SEA 1575/TH-bph

Key: \* Special service for Sudan; Digital modes experimental.

Some changes of IBB Washington:

Voice of America

0300-0400 6080 BOT 100 kW 350 deg to CeSAf English, exSAO  
 0330-0400 13680 BOT 100 kW 010 deg to Eaf Somali, ex350 deg  
 0500-0530 11875 N 250 kW 185 deg to WCAf Hausa, ex195 deg  
 0500-0600 11995 SMG 250 kW 114 deg to WAs Kurdish, still the air  
 0500-0600 15560 CLN-IRA 250 kW 310 deg to WAs Kurdish, still the air  
 0500-0600 17870 BIB 100 kW 085 deg to WAs Kurdish, still the air  
 1400-1500 9845 PHT 250 kW 349 deg to EAs Chinese, exUDO  
 1400-1500 15470 BOT 100 kW 010 deg to WAs Kurdish, still the air  
 1400-1500 17870 CLN-IRA 250 kW 299 deg to WAs Kurdish, still the air  
 1630-1700 15460 SAO 100 kW 100 deg to CAF Swahili, ex112 deg  
 1630-1700 15720 BOT 100 kW 350 deg to CSAf Portuguese Fr, exISS  
 1630-1700 NF17600 SAO 100 kW 088 deg to CAF Swahili, ex11835  
 1630-1700 15265 KWT 250 kW 185 deg to CAF Swahili  
 1630-1700 15460 SAO 100 kW 100 deg to CAF Swahili  
 1700-1800 7365 BIB 100 kW 105 deg to WAs Kurdish, still the air  
 1700-1800 9850 BIB 100 kW 105 deg to WAs Kurdish, still the air  
 1700-1800 11995 CLN-IRA 250 kW 315 deg to WAs Kurdish, still the air  
 1730-1800 NF12080 SAO 100 kW 076 deg to Eaf Oromo Mon-Fr, ex11925  
 1800-1830 15720 CLN-IRA 250 kW 255 deg to CSAf Portuguese Mon-Fr, exISS  
 1800-1900 NF12080 ISS 250 kW 130 deg to Eaf Amharic, ex11925  
 1900-1930 NF12080 ISS 250 kW 130 deg to Eaf Tigrigna Mon-Fr, ex11925  
 2130-2200 NF 9620 ASC 250 kW 027 deg to Waf Bambara Mon-Fr, ex7310  
 2130-2200 NF12040 WOF 300 kW 180 deg to Waf Bambara Mon-Fr, ex9620  
 2130-2200 13670 GB 250 kW 094 deg to Waf Bambara Mon-Fr no change  
 2130-2200 15110 GB 250 kW 094 deg to Waf Bambara Mon-Fr no change

Radio Farda

0400-1200 15690 CLN-IRA 250 kW 315 deg to WAs Persian, exUDO

Radio Liberty

1300-1400 13745 LAM 100 kW 055 deg to EEU Russian, exWOF  
 1600-1800 6105 LAM 100 kW 055 deg to EEU Belorussian, exN

Cancelled broadcasts of IBB from July 1, updated version

Voice of America

Azeri

1730-1800 7435 KWT 250 kW 058 deg to CAs  
 1730-1800 9490 BIB 100 kW 080 deg to CAs  
 1730-1800 11985 SMG 250 kW 073 deg to CAs

Bangla

1600-1700 7475 UDO 250 kW 300 deg to SAs



1600-1700 11850 UDO 250 kW 300 deg to SAs

#### English to Asia

0100-0200 7425 KWT 250 kW 082 deg to SAs  
 0100-0200 9780 CLN-IRA 250 kW 356 deg to SAs  
 0100-0200 15205 UDO 250 kW 292 deg to SAs  
 1200-1300 7575 UDO 250 kW 018 deg to EAs  
 1200-1300 9510 PHT 250 kW 283 deg to SEAs  
 1200-1300 12075 PHT 250 kW 349 deg to SEAs  
 1200-1300 12150 PHT 250 kW 270 deg to EAs  
 1300-1400 7575 UDO 250 kW 018 deg to EAs Sa/Su  
 1300-1400 9510 PHT 250 kW 283 deg to SEAs Sa/Su  
 1300-1400 12075 TIN 250 kW 305 deg to EAs Sa/Su  
 1300-1400 12150 PHT 250 kW 349 deg to SEAs Sa/Su  
 1400-1500 7575 UDO 250 kW 268 deg to SAs Mo-Fr  
 1400-1500 12110 PHT 250 kW 270 deg to SAs Mo-Fr  
 1400-1500 15490 PHT 250 kW 270 deg to SEAs Mo-Fr  
 1500-1600 7575 UDO 250 kW 268 deg to SAs  
 1500-1600 12110 PHT 250 kW 270 deg to SAs  
 1500-1600 15490 UDO 250 kW 280 deg to SAs  
 2200-2300 5895 CLN-IRA 250 kW 065 deg to SEAs Su-Thu  
 2200-2300 5915 UDO 250 kW 018 deg to EAs Su-Thu  
 2200-2300 7480 KWT 250 kW 058 deg to SAs Su-Thu  
 2200-2300 7575 PHT 250 kW 270 deg to SEAs Su-Thu  
 2200-2300 12150 TIN 250 kW 313 deg to EAs Su-Thu  
 2300-2400 5895 PHT 250 kW 275 deg to SEAs  
 2300-2400 7480 UDO 250 kW 018 deg to EAs  
 2300-2400 7575 PHT 250 kW 270 deg to SEAs  
 2300-2400 12150 TIN 250 kW 313 deg to EAs

#### English Learning

0030-0100 7425 KWT 250 kW 082 deg to SAs  
 0030-0100 9790 KWT 250 kW 078 deg to SEAs  
 0030-0100 12015 UDO 250 kW 030 deg to EAs  
 0030-0100 12150 UDO 250 kW 280 deg to SEAs  
 0030-0100 15290 PHT 250 kW 349 deg to EAs  
 0030-0100 17820 PHT 250 kW 021 deg to EAs  
 0130-0200 9825 GB 250 kW 172 deg to SAm  
 1500-1600 6140 UDO 250 kW 284 deg to SAs  
 1500-1600 7540 PHT 250 kW 270 deg to SAs  
 1500-1600 9400 PHT 250 kW 349 deg to EAs  
 1600-1700 11915 SAO 100 kW 114 deg to CAf  
 1600-1700 13570 BOT 100 kW 350 deg to CAf  
 1600-1700 17895 CLN-IRA 250 kW 275 deg to CSAf  
 1900-2000 7485 CLN-IRA 250 kW 299 deg to NE/ME  
 2230-2300 7460 PHT 250 kW 270 deg to SEAs  
 2230-2300 9570 UDO 250 kW 018 deg to EAs  
 2230-2300 11840 PHT 250 kW 349 deg to EAs  
 2300-2400 7460 PHT 250 kW 270 deg to SEAs  
 2300-2400 9570 UDO 250 kW 018 deg to EAs  
 2300-2400 11840 PHT 250 kW 349 deg to EAs

#### Khmer

1330-1430 11695 CLN-IRA 250 kW 073 deg to SEAs  
 2200-2230 5905 PHT 250 kW 270 deg to SEAs  
 2200-2230 9320 PHT 250 kW 270 deg to SEAs

#### Lao

1230-1300 9695 PHT 250 kW 270 deg to SEAs  
 1230-1300 11965 PHT 250 kW 270 deg to SEAs

#### Uzbek

1500-1530 11810 KWT 250 kW 046 deg to CAs  
 1500-1530 11920 SMG 250 kW 073 deg to CAs

# 18

1500-1530 13650 UDO 250 kW 316 deg to CAs  
1500-1530 17600 KWT 250 kW 046 deg to CAs

## Radio Free Asia

### Lao

0000-0100 15690 TIN 250 kW 289 deg to SEAs  
1100-1200 9325 SAI 100 kW 285 deg to SEAs  
1100-1200 15120 TIN 250 kW 279 deg to SEAs

### Vietnamese

1400-1500 9760 TIN 250 kW 270 deg to SEAs  
1400-1500 12130 TIN 250 kW 280 deg to SEAs  
1400-1500 13825 SAI 100 kW 285 deg to SEAs  
2330-0030 9585 KWT 250 kW 086 deg to SEAs  
2330-0030 13835 SAI 100 kW 285 deg to SEAs  
2330-0030 15675 TIN 250 kW 280 deg to SEAs

## Radio Farda in Persian

0030-0400 7280 N 250 kW 105 deg to WAs  
0930-1100 13860 LAM 100 kW 108 deg to WAs  
1600-1700 15690 N 250 kW 105 deg to WAs

## Azeri

1730-1800 7435 KWT 250 kW 058 deg to CAs  
1730-1800 9490 BIB 100 kW 080 deg to CAs  
1730-1800 11985 SMG 250 kW 073 deg to CAs

## Bangla

1600-1700 7475 UDO 250 kW 300 deg to SAs  
1600-1700 11850 UDO 250 kW 300 deg to SAs

## Uzbek

1500-1530 11810 KWT 250 kW 046 deg to CAs  
1500-1530 11920 SMG 250 kW 073 deg to CAs  
1500-1530 13650 UDO 250 kW 316 deg to CAs  
1500-1530 17600 KWT 250 kW 046 deg to CAs  
(Ivo Ivanov-BUL, via wwdxc BC-DX TopNews July 4)

## Updated schedule of WHRI Angel #2 on 11635 kHz.

0445-0500 11635 HRI 250 kW 047 deg to WEu English Su Eternal Good News  
0500-0600 11635 HRI 250 kW 047 deg to WEu English Sa/Su  
0500-0515 11635 HRI 250 kW 047 deg to WEu French Fr  
0515-0600 11635 HRI 250 kW 047 deg to WEu English Fr  
0530-0600 11635 HRI 250 kW 047 deg to WEu English Mon-Thu, ex0500-0600  
(Ivo Ivanov-BUL, via wwdxc BC-DX TopNews July 12)

## U.S.A. [non] - A-14 RFA Daily Broadcast Frequencies:

[GERMANY / KOREA Rep of / KUWAIT / LITHUANIA / MARIANA ISL\_Saipan / MARIANA ISL\_Tinian / MONGOLIA / SRI LANKA / TAIWAN / TAJIKISTAN / THAILAND / UAE]

## Burmese (4 hours daily)

0030-0130 9940/CLN-IRA 12115/KWT 15700/TIN  
1230-1330 7390/CLN-IRA 9335/TIN 13870/TIN  
1330-1400 7390/TIN 9335/TIN 12140/SAI  
1400-1430 7390/TIN 9335/TIN  
1630-1730 9940/CLN-IRA

## Cantonese (2 hours daily)

all via Tinian Isl, variable change every week.

1400-1500 13585Sa 13595Su 13635Mo/We/Fr 13700Tu/Th  
2200-2300 15260Mo 15270Tu 15280We 15290Th 15300Fr 15380Sa 15390Su

## Khmer (2 hours daily)

1230-1330 12140/SAI

2230-2330 13740/SAI

Korean (5 hours daily)

1500-1700 1188/SEO 5820/TIN 7210/TIN 7455/TIN  
 1700-1800 1188/SEO 5820/TIN 9975/TIN  
 1800-1900 5820/TIN  
 2100-2200 7460/MNG 9610/TIN 11945/SAI

Lao (formerly 2 hours daily)

deleted 0000-0100 and 1100-1200 UT services now.

Mandarin (12 hours daily)

0300-0400 13710/SAI 17495/TIN 17615/TIN 17855/SAI  
 0400-0500 13790/SAI 15615/TIN 17855/SAI 21505/TIN  
 0500-0600 13790/SAI 15615/TIN 17855/SAI 21690/TIN  
 0600-0700 13790/SAI 15615/TIN 17495/TIN 17790/SAI 17810/TIN  
 1500-1600 9455/SAI 13675/TJK 15205/TIN 15430/SAI  
 1600-1630 9455/SAI 13675/TJK 15560/SAI  
 1630-1700 9695/SAI 11685/TIN 13675/TJK 15560/SAI  
 1700-1800 5890/TIN 7395/TIN 9355/SAI 9745/SAI  
 1800-1900 5890/TIN 9355/SAI 9745/SAI 11555/SAI  
 1900-2000 1098/KOU-TWN 5890/TIN 7260/TIN 9355/SAI 9745/KWT  
 2000-2100 1098/KOU-TWN 5890/TIN 6140/TIN 7260/TIN 7435/TJK 9355/SAI 9745/KWT  
 2100-2200 1098/KOU-TWN 5890/TIN 7435/TJK 9335/TIN 9690/KWT  
 2300-2330 9440/KWT 11785/TIN 15570/TIN  
 2330-0000 9440/SAI 11785/TIN 15570/TIN

Tibetan (10 hours daily)

TIN and KWT frequency hopping, variable change every week,  
 variable operation day of the week change very often.

0100-0200 9680/KWT 9885/TJK 11695/UAE 17730/MNG  
 TIN:17635Tu/Th 17665Sa 17685Mo/We/Fr 17700Su  
 0200-0300 9885/TJK 11695/UAE 11745/KWT 17730/MNG  
 TIN:21550Mo 21560Tu 21575We 21585Th 21595Fr 21610Sa 21620Su  
 0600-0700 17510/TJK 17700/KWT 21550/TIN 21690/UAE  
 {Mo,We,Fr only 17635KWT}  
 1000-1100 13680/KWT 15620/TIN  
 TIN:21455Su 21465Sa 21475Fr 21485Th 21495We 21505Tu 21525Mo  
 1100-1200 7470/MNG 13830/TJK 15195/UAE  
 KWT:18930Mo 18980Fr/Tu 18990We/Sa 19000Th 19010Su  
 1200-1300 7470/MNG 11605/TIN 13830/TJK 15195/TJK  
 KWT:18930Su 18980Mo/Th 18990Tu/Fr 19000We/Sa  
 1300-1400 7470/MNG 11605/TIN 13830/TJK 15195/TJK  
 KWT:18930Mo 18980Tu/Fr 18990We/Sa 19000Th 19010Su  
 1500-1600 9370/TJK 11795/UAE 13735/TIN  
 2200-2300 7505TJK 9370SAI  
 KWT:11830Mo 11870Tu 11965We 11995Th 12035Fr 12045Sa 12125Su  
 2300-0000 6075/KWT 9805/UAE 9875/TJK

Uyghur (2 hours daily)

0100-0200 9350/TJK 9400/LTU 11640/UAE 11945/UAE 17540/TIN  
 1600-1700 9370/TJK 9555/UAE 9975/TIN 11560/TIN

Vietnamese (2 hours daily)

deleted 0000-0030 12125/KWT 13835/SAI 15675/TIN  
 1400-1430 1503/FAO-TWN  
 deleted 1400-1500 9720/TIN 12130/TIN 13825/SAI  
 2300-2400 1503/FAO-TWN  
 deleted 2330-2400 12125/KWT 13835/SAI 15675/TIN  
 (via wb, wwdxc BC-DX TopNews July 1)

**VATICAN CITY** - Frequency changes for the special broadcasts of Vatican Radio

0700-1030 on 21550 SMG 250 kW / 145 deg to CAf English, ex 21740  
 0700-1030 on 21560 SMG 250 kW / 165 deg to SAf Portuguese, ex 21760

0700-1030 on 21570 SMG 250 kW / 210 deg to NWAf French, ex 17525  
(DX MIX NEWS #858 from Georgi Bancov and Ivo Ivanov, June 28, 2014)

**YEMEN** - Extended broadcasts of R. Sana'a in Arabic for Ramazan, but not daily.

1500-1615 6135 ALH 050 kW non-dir to NE/ME

1525-1555 6135 ALH 050 kW non-dir to NE/ME

1523-1608 6135 ALH 050 kW non-dir to NE/ME

(Ivo Ivanov-BUL, via wwdxc BC-DX TopNews July 11)

Radio Sana'a in English was back shortwave again June 13 1800-1900 6135 ALH 050 kW non-dir to NE/ME.

(Ivo Ivanov-BUL, via wwdxc BC-DX TopNews June 17)

\*\*\*\*\*

**Editor's info desk was closed for this edition on July 13th, 2014, at 10:00 UTC.**

**Please visit also our website for lists of broadcasts in German and English, updated regularly.**

\*\*\*\*\*

### Sources & Contributors:

**A-DX** - e-mail exchange - Austria.

**Alokesh Gupta** - New Delhi - India.

**BCDX** - News Bulletin by Wolfgang W. Bueschel (wb) - Stuttgart - Germany.

**CONEXION** - CONEXION Digital - Buenos Aires - Argentina.

**DXLD** - Glenn Hauser's DX LISTENING DIGEST - USA.

**Dr. Hans-Jörg Biener (hjb)** - Nuremberg, Germany.

**DX MIX NEWS = DX RE MIX NEWS** - from Georgi Bancov & Ivo Ivanov, Bulgaria.

Others as stated in contribution.

\*\*\*\*\*

Any items from Glenn Hauser, DX LISTENING DIGEST, and/or World of Radio may be reproduced or broadcast only if full credit be maintained at all stages, from the original source through DXLD, and publications quoting are made available to gh in exchange.

Items from this file may be reproduced or re-reproduced only if full credit is maintained at all stages.

\*\*\*\*\*

### Abbreviations:

with name of station:

BC / bc = Broadcaster, Int. = International, R = Radio, tx = Transmitter, Vo = Voice of, QRG = frequency

Location of transmitters with frequency:

Al = Aligarh/India, ALB = Albania, Arm = Armavir/RUS, Ban = Bangalore, Be = Beijing/China, Bib = Biblis/DL, BIH = Bosnia-Herzegovina, BLR = Byelorussia, BOT = Botswana, Br = Brandon/Aus, CHN = China, CLN-Ira = Sri Lanka Iranawila, CLN-Trm = Sri Lanka Trincomalee, CTR = Costa Rica, Du = Dushanbe/TJK, Dw = Darwin/Aus, ERV = Erivan/Armenia, F = Issoudun/France, Fl = Okeechobee Florida/USA, GAB = Gabun, GUF = French Guyana, HAB = Habana/Cuba, Ho = Hohhot/CHN, HRI = WHRI Cypress Creek/USA, IK = (IRK) Irkutsk/Siberia, Jin = Jinhua, Kash = Kashgar/CHN, Ka = Kingsway (Delhi), Kh = Khampur (Delhi), KOR = (South) Korea, Ku = Kununurra/Aus, Kun = Kunming/CHN, KWT = Kuwait, Lam = Lampertheim/DL, M = Moscow (Taldom), MCO = Monaco, MDA = Moldavia, MDG = Madagascar, MNG = Mongolia, MRA = Northern Marianas, N = Nauen/DL, Nn = Nanning/CHN, Pan = Panaji/India, RRW = Ruanda, RSA = Meyerton/South Africa, RUS = Russia incl. Sibiria, SAI = Saipan (MRA), SEY = Seychelles, Sh = Shepparton/Aus, SNG = Singapur, STP = Sao Tomé, SWZ = Swaziland, TH = (NAK) Nakhon Sawan/Thailand, TIN = Tinian (MRA), TJK = Tajikistan, TWN = Taiwan, UAE = Al Dubbaya/United

Arab Emirates, Ur = Urumchi/CHN, Vla = Vladivostok, Wof = Woofferton/GB, Xi = Xian/CHN, Ya = Yamata/Japan.

Mostly within round brackets target areas as known:

Af = Africa, Am = America, As = Asien, Aus = Australien; Eu = Europe, ME = Middle East, Pac = Pacific Region; C = Central, E = East, N = North, S = South, W = West

Languages:

Ar Arabic - Ch Chinese - Du Dutch - E, En English - F French - G, Ge German -  
Gr Greek - I Italian - J Japanese - K Korean - P Portuguese - R Russian - Sp Spanish - Turk Turkish

Technical hint with frequency (QRG):

(\*) = Digital Radio broadcast (DRM)      v = variable      irr = irregular  
/USB = upper sideband, /LSB = lower sideband, alt.: (QRG) = alternative frequency

\*\*\*\*\*

### Editor:

Walter Eibl (we), P.O. Box 1545, 91005 Erlangen, Germany.

Email: <we@wwdxc.de> or <we@kwrs.de>

Used equipment:

Receiver: Communications receiver ICOM IC-R70 (no modification)

Antenna: Hamtronic HT504 selective active antenna, in roof window ca. 15 m above ground

Location: Herzogenaurach / Germany; 49.567/10.917; 310 m NN

\*\*\*\*\*

## INTERNATIONAL SHORTWAVE BROADCAST STATION KNLS

Anchor Point, Alaska, 340 kilometers or 211 miles south of Anchorage, is an unlikely place from which to beam messages that change lives around the world. But it's been happening since July 23, 1983. On that date, KNLS, the first shortwave station built by World Christian Broadcasting, began transmitting in Russian and Chinese. In the rugged Alaskan landscape of the Kenai Peninsula, 28 hectares of land near Anchor Point were chosen as a perfect site for shortwave transmission. Construction began in 1980. Wells were dug, housing installed, the antenna erected, and the transmitter building constructed.

Each giant dipole curtain antenna measures about 120 meters square, about the size of two American football fields. The wire mesh curtain actually consists of sixteen separate dipole antennae strung together. A second wire screen, hanging just behind the antenna, pushes the radio frequency signal toward the west. Using huge switches at the curtain's base, operators can slew - or aim - the antenna toward different parts of Asia and the Pacific Basin.

A special counterweight system allows the antenna to survive Alaska's bitter winds, ice, and snow. "If high wind or heavy icing were to load all of the wires between the towers," said the architect and chief engineer for the project, Francis Perry, ".concrete counter weights would come off ground allowing the antenna to sag temporarily. That is the protective measure which prevents the tower from being loaded too much." Although the giant concrete cylinders weigh as much as a small car, Perry says he has seen them pulled fifteen centimeters off the ground by high winds or ice ..



(KNLS website via Arctic & Antarctic DX, July CIDX Messenger via DXLD)



# DX LOGBOOK

## Logs around the clock

by Ashok Kumar Bose, Unit # 28, 7035, Rexwood Road, Mississauga, ON, L4T 4M6, Canada  
E-Mail: logbook@wwdxc.de

### MEDIUMWAVE BAND

Frequency	UTC	SIO	ITU	Radio Station	Language	Programme Details	Date	Rep.
693.0	2115	222	G	Duxhurst Classic Premier	English	Late News Show	2605	MF
726.0	2125	121	G	Premier Gold, Margate	English	Night music show	2605	MF
900.0	2015	111	G	Gold, Oxford	English	Shops for tourists	2605	MF
972.0	2035	111	G	Gold Premier, Oxford	English	Student Orchestra	2605	MF
1008.0	2025	111	G	Classic Gold, Luton	English	Music	2605	MF
1098.0	2040	111	G	Gold, Luton	English	Quiz Show	2605	MF
1278.0	2050	111	G	Classic Premier, Preston	English	Music Lotto	2605	MF
1251.0	0310	121	G	Premier Gold, Soho	English	Traffic light jungle	0406	MF
1305.0	2050	111	G	Classic Gold, Cambridge	English	Wrong Belief	2805	MF
1332.0	2325	211	G	Premier Gold, Bolton	English	Gold Boys of Bolton	0806	MF
1341.0	2110	333	G	Premier Gold, Gloucester	English	Music Quiz Show	2605	MF
1359.0	2100	121	G	BBC Premier, Walsell	English	Sport Talk	2605	MF
1413.0	0010	222	G	BBC Gold, Leeds	English	ADDX	0906	MF
1458.0	2200	333	G	Sunrise, London	English	Music requests	2805	MF

### SHORTWAVE BANDS

Frequency	UTC	SIO	ITU	Radio Station	Language	Programme Details	Date	Rep.
6170.0	1332	433	NZL	Radio New Zealand	English	Mailbox	2306	RL
6175.0	0345	553	USA	Voice of Vietnam relay	English	Letterbox	2606	RL
9265.0	2100	333	USA	WINB	English	Talks	2905	PH
9390.0	2030	444	THA	Radio Thailand	English	News	2305	PH
9400.0	2000	333	IRN	VOIRI	English	News	0606	PH
9515.0	1600	121	KOR	KBS World	English	Samsung Handys	0806	MF
9665.0	1900	444	E	REE	English	News	0206	PH
9715.0	2000	444	IRN	VOIRI	English	News	2506	PH
9730.0	2130	333	VTN	Voice of Vietnam	English	News	1306	PH
9755.0	1800	333	AFS	Radio Japan	English	Japan in Focus	1706	PH
9785.0	1830	444	TUR	Voice of Turkey	English	News	1706	PH
9915.0	2000	444	G	BBC World Service	English	Talks	2605	PH
9925.0	0131	453	D	Mighty KBC via Nauen	English	Digital test	2906	RL
9975.0	0301	453	USA	KVOH	English	Jam Saturday night music	2206	RL
11625.0	1730	323	CVA	Vatican radio	English	Talks	2306	PH
11645.0	1600	343	KRE	Voice of Korea	English	News	2805	PH
11695.0	2200	444	AUS	Radio Australia	English	Songs	1306	PH
11725.0	2100	232	NZL	RNZI	English	News at Eight	1406	PH
11735.0	1530	121	TZA	Radio Tanzania	English	Death of Nelson Mandela	0806	MF
11775.0	2300	444	USA	WHRI	English	Bible Hour	2405	PH
11800.0	2000	222	RRW	Deutsche Welle	English	News	1506	PH
11840.0	1630	121	CLN	SLBC	English	Program	0806	MF
11845.0	1700	555	CVA	VOA	English	Tax policies	2505	PH

11865.0	2100	444	RRW	Deutsche Welle	English	News	2206	PH
11890.0	1600	444	SNG	BBC World Service	English	News	2805	PH
11995.0	1600	222	CLN	AWR	English	Songs	0206	PH
12005.0	0245	553	G	Voice of Vietnam relay	English	Letterbox	2606	RL
12085.0	1545	111	MNG	Voice of Mongolia	English	End of European broadcast	0806	MF
12085.0	1700	333	AUS	Radio Australia	English	Talks	0206	PH
13845.0	1300	222	USA	WWCR	English	Vietnam War	2605	PH
15120.0	1555	111	NIG	Voice of Nigeria	English	Abuja & Nigerian rebels	0806	MF
15190.0	1900	333	PHL	Radio Philipinas	English	Talks	1406	PH
15190.0	1520	221	GNE	Radio Africa	English	China guns for Africa	0806	MF
15215.0	1900	232	AUT	Bible Voice	English	Bible Hour	1506	PH
15235.0	1700	333	AFS	Channel Africa	English	Talks	2306	PH
15245.0	1800	333	KRE	Voice of Korea	English	News	2306	PH
15540.0	1900	444	KWT	Radio Kuwait	English	Music	1806	PH
15580.0	1800	444	BOT	VOA	English	News	1106	PH
15690.0	1730	444	F	Radio taiwan	English	Fox fur	0806	PH
15720.0	0328	453	NZL	Radio New Zealand Intl.,	English	Mailbox	2406	RL
15825.0	1800	232	USA	WWCR	English	Talks	1706	PH
17490.0	1000	343	CHN	China Radio Intl.,	English	What's in the world	0606	PH
17680.0	1100	555	ROU	Radio Romania Intl.,	English	Radio Newsreel	0406	PH

\*\*\*\*\*

### Here are the loggings from Richard A. D'Angelo of Wyomissing, Pennsylvania, USA:

- 5015.0 USA. WRMI – Okeechobee, 0026-0039 Jul 1, Brother Stair and the Overcomer Ministry with English preaching and letters from listeners. Fair.
- 6134.8 BOLIVIA. Radio Santa Cruz. 0103-0134 Jun 18, man announcer with Spanish talk hosting a lively music program. Poor to fair.
- 7265.0 CHINA. China Radio International – Kunming, 2251-2200\* Jun 8, man announcer talking in Mandarin language, several promo announcements at 2257, 5+1 time pips at 2300 before carrier terminated. Fair.
- 7350.0 CHINA. China Radio International – Kashi, 0036-0057\* Jun 25, English service with features hosted by a woman announcer. Id and closedown prior to carrier terminated. Poor to fair.
- 9500.0 OMAN. Radio Sultanate of Oman, 0027-0106 Jun 19, recitations followed by a man announcer with Arabic talk at 0043 mixing with some instrumental music. ID by another man announcer at 0100 followed by more talk features with some instrumental music. Fair.
- 9700.0 ROMANIA. Radio Romania International – Tiganesti, 0001-0022 Jun 25, man announcer with opening ID in English followed by a woman with news. Commentary at 0005 and Radio Newsreel. Contest information at 0013 followed by Business Club with feature about bee keeping. Good signal.
- 11510.0 PRIDNESTROVIE. Denge Kurdistana – Grigoriopol, 0334-0423 Jun 21, nice selection of musical programming hosted by a man announcer with brief talks in the Kurdish language. No stops for ID at 0400 as music programming continued. Fair.
- 11650.0 VATICAN. Radio Tamazui – Santa Maria di Galeria, \*0400-0414 Jun 11, local musical opening followed by a woman announcer with ID and opening announcements. News in Arabic language with several IDs during news. Good signal.
- 11680.0 GERMANY. Radio Japan – Nauen, 0342-0407 Jun 29, man announcer with Japanese talks hosting popular music program. Time pips at 0400 followed by ID and another man with news. Fair.
- 11710.8 ARGENTINA.RAE, 0234-0305 Jun 18, man announcer with English talks alternating with tango music. Multi-language station IDs beginning at 0254 prior to the opening of the French Service at 0300. Poor to fair.
- 11770.0 NIGERIA. Voice of Nigeria – Ikorodu, 2138-2158\* Jun 25, African drums and tribal vocals with a woman announcer hosting with talks in Hausa language. Nice ID at 2157 followed by closedown announcements and brief IS before carrier terminated. Fair to good signal with moderate fading.
- 11815.0 BRAZIL. Radio Brasil Central – Goiânia, 2303-0013 Jun 8, man announcer speaking in Portuguese language hosting a pop music program. Some songs with English lyrics. Fair.
- 11820.0 SAUDI ARABIA. Broadcasting Service of the Kingdom of Saudi Arabia, 2041-2138 Jun 8, Holy Qur'an program with recitations, ID at 2100 followed by brief newscast before returning to recitations. Fair //11915 was almost fair but subject to more fading.
- 11865.0 RWANDA. Radio Deutsche Welle - Kigali, 2139-2200\* Jun 8, English Service with features on car industry, widening gap between rich and poor in London, Portugal ending bailout program, several IDs as "DW". ID at 2159 followed by instrumental music until carrier terminated.
- 11915.0 BRAZIL. Radio Gaúcha - Porto Alegre, 0043-0112 Jul 1, man and woman talking in Portuguese language with another man with canned announcements at 0048. A canned ID at 0059 followed by time pips and ads. Into a series of remote reports and telephone interviews. Poor to fair.
- 11955.0 AUSTRIA. Adventist World Radio – Moosbrunn, 2118-2129\* Jun 25, English language features with a man and woman hosting. Closedown ID and soft instrumental until carrier terminated. Poor to fair.
- 15355.0 OMAN. Radio Sultanate of Oman, 2326-2352\* Jun 24, two male announcer speaking in the Arabic language. ID at 2330 followed by more talk. Middle Eastern music hosted by a man announcer with brief talks between selections from 2340 until carrier terminated mid-song at 2352. Good.
- 15540.0 KUWAIT. Radio Kuwait, 1941-2100\* Jul 2, woman announcer with English feature about development activities in Kuwait. Pop music program from 1956. Several nice IDs. News at 2049 followed by closing pop music selection. At 2058 a woman announcer gave ID and closedown announcements followed by orchestra national anthem. 5+1 time pips at 2100 followed by ID in Arabic and music fanfare just before carrier cut. Fair.

15590.0 THAILAND. Radio Thailand, \*0000-0026 Jul 1, instrumental music opening with a man and woman announcers giving ID and English news program. Usual array of promotional announcements during program. Poor.

\*\*\*\*\*

**Thanks a lot to our club members for your contributions:**

- HD : Harald Denzel, Egelsbach, Germany. JRC NRD 545-DSP, Lowe HF& Perseus 150 with paOrdt Mini-whip, Grahm GS5SE Modul MI3
- MF : Michael Frese, Osnabrueck, Germany. Grundig Yatchboy with telescopic aerial.
- PH : Paul Hayes, Limerick, Ireland. Sangean 909 with Telescopic antenna
- RAD : Richard A. D'Angelo, Wyomissing, PA, USA. Ten-Tec RX-340, Drake R-8B, Eton E1, Lowe HF-150 with Alpha Delta DX Sloper, Datong FL3.
- RL : Richard Lemke, St. Albert, Alberta, Canada. JRC NRD-535 HF with random long wire in the trees.

\*\*\*\*\*

Dear Friends,

Welcome to the July edition of Logbook

It is a smaller edition this time as members must be busy watching the World Cup Football as well as enjoying the long awaited summer on the Northern hemisphere.

Till next time,

*Ashok Kumar Bose*

\*\*\*\*\*

	<h2 style="margin: 0;">QSL CORNER</h2> <p style="margin: 0;">Editor: Dario Gabrielli, Viale della Resistenza 33b, IT-30031 Dolo (Ve), ITALY</p> <p style="margin: 0;">eMail: <a href="mailto:qsl@wwdxc.de">qsl@wwdxc.de</a></p>	
---	---	---

**Australia:** HCJB Australia 15525 kHz. Japanese program. Full data QSL card "June 2014 - 1995 Annual meeting of the Federation of Evangelical Nikkei in Brazil, Sao Paulo, Brasil" received in 12 days for report with two 82 yen stamps to HCJB Japan: HCJB Japan c/o Yodobashi Church, Hyakunin-cho 1-17-8, Shinjuku-ku, Tokyo, 169-0073 Japan (HT)

**Congo (Republic):** Radio Congo, Brazzaville 6115 kHz. English program. QSL card received after 300 days for English programme - via RSA address. (MF)

**Guam:** Adventist World Radio - KSDA 15495 kHz. Indonesian and Sundanese program. Full data QSL card "KSDA Guam Station Rededication, September 3, 2013" received in 106 days for report to: Adventist World Radio, Box 29235, Indianapolis, Indiana 46229, USA (HT)



**India:** All India Radio 15410 kHz. English program. Full data QSL card "Tomb of Sheikh Salim Chishti, Fatehpur Sikri" received in 46 days for report to Spectrum Manager: [spectrum-manager@air.org.in](mailto:spectrum-manager@air.org.in) (HT)

**All India Radio** 15410 kHz. English program. Full data QSL card "Throw colours on others. Add colour to your life." received in 302 days for report to General Overseas Service: [goesdair@yahoo.co.in](mailto:goesdair@yahoo.co.in) (HT)

**Korea (Rep):** Indian DX Report via KBS World Radio 11810 kHz. English program. Full data QSL card "State of Assam, India" received in 259 days for report with 2 IRC's to: Indian DX Report, c/o Prithwiraj



Purkayastha, Pub Bongaipukhuri, By Lane 4, Jorhat 785001, Assam, India (HT)

KBS World Radio 7275 kHz. Japanese program. Full data QSL card "Knitting technique of Hansan Mosi" received in 67 days for report to Japanese Section: <japanese@kbs.co.kr> (HT)

**Korea (DPR):** Voice of Korea 9650 kHz. Japanese program. Full data QSL card "President Kim Jong Il's birthplace" received in 35 days for report to Japanese Department: Voice of Korea, Japanese Department, Pyongyang, Democratic People's Republic of Korea (HT)

**Mongolia:** Voice of Mongolia 12085 kHz. Japanese program. Full data QSL card "Camel herdsman" received in 14 days for report to Japanese Section: Voice of Mongolia, Japanese Section, CPO Box 365, Ulaanbaatar 211213, Mongolia (HT)

**Nepal:** Radio Nepal 6100 kHz confirmed report after 300 days by QSL card showing Himalayan mountains. (MF)

**Papua New Guinea:** Voice of Papua New Guinea 9675 kHz confirmed by QSL card (1 of 6 cards with Paradise birds) after 300 days. (MF)

**Philippines:** Radio Veritas Asia 15355 kHz. Filipino program. Full data QSL card "25 Years of broadcasting throughout Asia" received in 32 days for report to: Radio Veritas Asia, P.O. Box 2642, Quezon City 1166, Philippines (HT)

Radyo Pilipinas 17820 kHz. English program. Full data QSL card received in 33 days for report to: Radyo Pilipinas, 4th Floor, PIA Building, Visayas Avenue, Quezon City 1100, Philippines (HT)

**Romania:** Radio Romania International 11940 kHz. English program. Full data QSL card "The Bethlen-Haller Castle in Cetatea de Balta" received in 35 days for report to English Section: Radio Romania International, English Section, 60-62 General Berthelot Street, P.O. Box 111, Bucharest, Romania (HT)

**Rwanda:** Deutsche Welle via Kigali 11865 kHz. English program. Full data QSL card "Buildings of Deutsche Welle" received in 32 days for report to Customer Service: info@dw.de (HT)

**Thailand:** Radio Thailand World Service 9390 kHz. Japanese program. Full data QSL card "Red Lotus Sea" received in 19 days for report to: International Broadcasting Bureau, Thailand Transmitting Station, P.O. Box 99 A. Muang, Udon Thani, 41000, Thailand (HT)

**Turkey:** Voice of Turkey 11760 kHz. Dari program. Full data QSL card "April 23 National Sovereignty and Children's Day" received in 33 days for report to: Voice of Turkey, PK 333, 06443 Yenisehir, Ankara Turkey (HT)

\*\*\*\*\*

The reporters of this edition of QSL CORNER have been:

**HT** = Hironori Takeuchi, Chiba, Japan

**MF** = Michael Frese, Osnabrueck, Germany

\*\*\*\*\*

Dear Friends,

Many thanks for your continued contribution to the section that I hope can continue in future. I remember you to include details about the program of the radio stations that you receive confirmation from (e.g. English program, Technical Department etc.). So I ask you if you can continue to include details about this when known. Naturally it's useful also to know the postal address or eMail where you send the reception report to. I'll want inform that the next contribution deadline is on **Saturday 23<sup>rd</sup> August 2014**.

*Dario*

## RFA RELEASES THIRD QSL TRANSMITTER SERIES IBB IRANAWILA

Radio Free Asia (RFA) announces the release of the third QSL card in the series highlighting the International Broadcasting Bureau (IBB) transmitter sites used for RFA programming. RFA programs broadcast from the following IBB sites: Biblis, Iranawila, Kuwait, Lampertheim, Saipan and Tinian. IBB's Iranawila transmitter site in Sri Lanka is equipped with four 500 kW and three 250 kW transmitters. All seven of these transmitters broadcast at a power level of 250 kW in carrying out the station's mission, which includes f. e. broadcasting RFA's Burmese programme on shortwave. This is RFA's 54<sup>th</sup> QSL overall and **will be used to confirm all valid RFA reception reports from July 1 - August 31, 2014.**



Radio Free Asia (RFA) is a private, nonprofit corporation that broadcasts news and information to listeners in Asian countries where full, accurate, and timely news reports are unavailable. Created by US-Congress in 1994 and incorporated in 1996, RFA currently broadcasts in Burmese, Cantonese, Khmer, Korean to North Korea, Lao, Mandarin, the Wu dialect, Vietnamese, Tibetan (Uke, Amdo, and Kham), and Uyghur. RFA strives for accuracy, balance and fairness in its editorial content. As a 'surrogate' broadcaster, RFA provides news and commentary specific to each of its target countries, acting as the free press these countries lack. RFA broadcasts only in local languages and dialects, and most of its broadcasts comprise news of specific local interest. More information about Radio Free Asia, including our current broadcast frequency schedule, is available at <http://www.rfa.org>. RFA encourages listeners to submit reception reports. Reception reports are valuable to RFA as they help us evaluate the signal strength and quality of our transmissions. RFA confirms all accurate reception reports by mailing a QSL card to the listener. RFA welcomes all reception report submissions at RFA website <http://www.techweb.rfa.org> (follow the QSL REPORTS link) not only from DX'ers, but also from its general listening audience in target areas. Reception reports are also accepted by email at [qsl@rfa.org](mailto:qsl@rfa.org), and for anyone without Internet access, reception reports can be mailed to our postal address.

Reception Reports  
Radio Free Asia  
2025 M. Street NW, Suite 300  
Washington DC 20036  
United States of America

Upon request, RFA will also send a copy of the current broadcast schedule and a station sticker.

RFA's AJ via Siegbert Gerhard, Frankfurt am Main