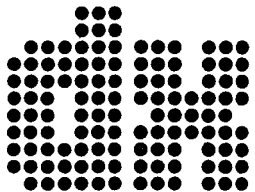


10 - 2014 € 1,50

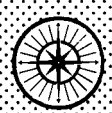
BBC ORTF
ADIO MOSKOU
NDR RAI TVR



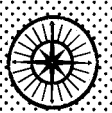
ISSN 0175-6877



newstime



WORLD WIDE DX CLUB



Staff of WORLDWIDE DX CLUB:

- PRESIDENT AND CHIEF EDITOR** . . . ✉ WWDXC Headquarters, Michael Bethge, Postfach 12 14, D-61282 Bad Homburg, Germany ● E-Mail: mail@wwdxc.de
☎ +49-6172-123118 ● ☎ +49-6172-123117
- BROADCASTING NEWS EDITOR** . . . ✉ Walter Eibl, Postfach 15 45, D-91005 Erlangen, Germany
E-Mail: news@wwdxc.de
- LOGBOOK EDITOR** ✉ Ashok Kumar Bose, Unit # 28, 7035, Rexwood Road, Mississauga, Ontario, L4T 4M6, Canada ● E-Mail: logbook@wwdxc.de
- QSL CORNER EDITOR** ✉ Dario Gabrielli, Viale della Resistenza 33b, I-30031 Dolo (Ve), Italy
E-Mail: qsl@wwdxc.de
- TOP NEWS EDITOR (Internet)** ✉ Wolfgang Büschel, Hoffeld, Sprollstrasse 87, D-70597 Stuttgart, Germany ● E-Mail: topnews@wwdxc.de
- TREASURER & SECRETARY** ✉ Karin Bethge, Urseler Strasse 18, D-61348 Bad Homburg, Germany
- NEWCOMER SERVICE OF AGDX** . . . ✉ Hobby-Beratung, c/o AGDX, Postfach 12 14, D-61282 Bad Homburg, Germany (please enclose return postage)

Each of the editors mentioned above is self-responsible for the contents of his composed column. Furthermore, we cannot be responsible for the contents of advertisements published in DX MAGAZINE.

We have no fixed deadlines. Contributions may be sent either to WWDXC Headquarters or directly to our editors at any time. If you send your contributions to WWDXC Headquarters, please do not forget to write all contributions for the different sections on separate sheets of paper, so that we are able to distribute them to the competent section editors.

- WORLDWIDE DX CLUB homepage in the Internet: <<http://www.wwdxc.de>>
- Weekly "TopNews" by Wolfgang Büschel: <<http://topnews.wwdxc.de>> (available free of charge by E-Mail to our members on request)
- Latest DRM schedule: <<http://www.wwdxc.de/drm.htm>>

WORLD RADIO TV HANDBOOK 2015

Prices for orders from WORLDWIDE DX CLUB ■ Preise bei Bestellung beim WORLDWIDE DX CLUB:

€30.00 until November 30th, 2014 - afterwards €32.00, including postage and packing inside Europe.

Delivery against advance payment by International Money Order, cheque in € drawn on a German bank (otherwise please add € 5.00 for bank charges), cheque in US\$ drawn on a US bank, cash in any convertible currency, Postal Money Order or transfer to our bank accounts: Raiffeisenbank Graevenwiesbach (IBAN: DE75 5006 9345 0100 0199 84 - BIC/SWIFT-Code: GENODE51GWB) or ING/Netherlands (IBAN: NL08 INGB 0003 8228 40 - BIC/SWIFT-Code: INGBNL2A).

Der obige Preis enthält Porto und Verpackung. Lieferung gegen Vorauszahlung durch Überweisung, Scheck in € (gezogen auf eine deutsche Bank, sonst € 5,00 zusätzlich für Bankgebühren), Postanweisung oder Bargeld. Konten: Raiffeisenbank Grävenwiesbach (IBAN: DE75 5006 9345 0100 0199 84 - BIC/SWIFT-Code: GENODE51GWB) und ING/Niederlande (IBAN: NL08 INGB 0003 8228 40 - BIC/SWIFT-Code: INGBNL2A).

DX MAGAZINE is the monthly publication of WORLDWIDE DX CLUB, Postfach 12 14, D-61282 Bad Homburg, Germany. Price for a single copy: € 1.50 or 2 International Reply Coupons (IRC's); annual subscription rate: € 18.00. Other currencies and air mail rates on request. Cover: Peter Pohle + Jürgen Kauer (KAVOP)



DX MAGAZINE No. 10



Vol. XLIX

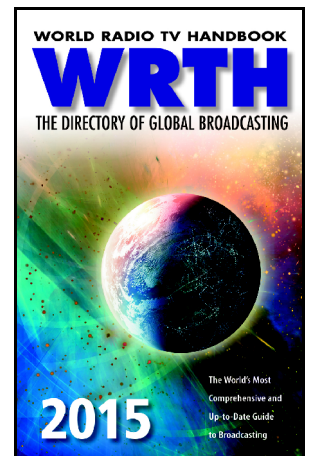


October 2014

Hello again,

Here we are back again after our usual summer break. I hope that you have enjoyed your summer holidays, if you had any, and that you have had also some time for DX'ing. If so, please do not forget to send your news and loggings to our editors.

On page 2 please find the prices and conditions for ordering the new **WORLD RADIO TV HANDBOOK 2015**, which will be available in Germany in mid-December. In this 69th edition for the year 2015 WRTH Publications Limited have again devoted their resources to the all-important task of obtaining and providing the most up-to-date information on mediumwave, shortwave and FM broadcasts and broadcasters available in any publication. The book will have 672 pages, including 64 pages in full colour (more information: <http://www.wwdxc.de/archive/wrth2015.pdf>).



Auch in diesem Jahr können Sie das neue **WORLD RADIO TV HANDBOOK 2015** wieder bei uns bestellen. Der Subskriptionspreis bis zum 30. November beträgt für unsere Mitglieder € 30,00 (bei einem Ladenverkaufspreis von € 36,00) - ab 1. Dezember dann € 32,00. Das Buch soll wieder Mitte Dezember erscheinen und wird dann von uns gleich an die Besteller ausgeliefert werden. Der obige Preis enthält Porto und Verpackung. Lieferung gegen Vorauszahlung durch Überweisung, Scheck in € (gezogen auf eine deutsche Bank, sonst € 5,00 zusätzlich für Bankgebühren), Postanweisung oder Bargeld. Konten: Raiffeisenbank Grävenwiesbach (IBAN: DE75 5006 9345 0100 0199 84 - BIC/SWIFT-Code: GENODE51GWB) und ING/Niederlande (IBAN: NL08 INGB 0003 8228 40 - BIC/SWIFT-Code: INGBNL2A).

Falls Sie bei dieser Gelegenheit gleich Ihren Mitgliedsbeitrag überweisen möchten: Hier die unveränderten Beitragssätze für 2015: RKwwh + DXM = € 60,00, *nur* DXM = € 18,00, *nur* RKwwh = € 45,00, RKwwh + DXM als PDF-Datei = € 31,00, *nur* DXM als PDF-Datei = € 9,00, *nur* RKwwh als PDF-Datei = € 25,00. Wann Ihr Mitgliedsbeitrag genau ausläuft, können Sie übrigens jeweils auf dem Adressenaufkleber Ihres DX MAGAZINES (oben rechts = letzter bezahlter Monat + Jahr) sehen.

Wir haben auch noch ein Exemplar des **WORLD RADIO TV HANDBOOKS 1991** übrig, welches wir für Sammler zum Preis von € 5,00 anbieten, inklusive Porto und Verpackung. Lieferung gegen Vorauszahlung auf unser Konto bei der Raiffeisenbank Grävenwiesbach (IBAN: DE75 5006 9345 0100 0199 84 - BIC/SWIFT-Code: GENODE51GWB).

Klingenfuss Publications have informed us that they are now working on their new products

- 2015/2016 Guide to Utility Radio Stations
- 2015 Shortwave Frequency Guide
- 2015 Super Frequency List on CD
- 2015 Frequency Database for the Perseus LF-HF Software-Defined Receiver

to be published on 10 December 2014.

Full-resolution title page graphics can be found at: http://www.klingenfuss.org/g_2015.gif, http://www.klingenfuss.org/r_2015.jpg and http://www.klingenfuss.org/s_2015.gif.

If you are able to supply additional new frequencies and stations, your cooperation would be highly appreciated. Please let us have your data by 20 October 2014. (**Jörg Klingenfuss** info@klingenfuss.org)

And with this best wishes and good DX until next month from



NEWS ABOUT BROADCASTING (+other) STATIONS

Walter Eibl · Postfach 15 45 · D-91005 Erlangen · GERMANY

ANGUILLA [and non] - 6090, Sept 30 at 0535, PMS modulation has some distortion at peaks, not the case with otherwise // 5935 WWCR. Why should we refer to this station as "Caribbean Beacon" when it never IDs as such, much less broadcasts anything about the Caribbean, just dead Gene Scott or his widow and heir to the blab business? Also a low audible heterodyne, which could be Kaduna, Nigeria, reported as 6089.85 or 6089.86 lately. (gh, DXLD)

ANTARCTICA - 15475.9, R. Nacional Arcángel San Gabriel/LRA36. Surprised to find some audio coming in at 2102. W announcer at 2105. 2108-2113 music. 2113-2121 long talk by W again, gradually getting stronger. Song from 2121-2125, W returned again with another long talk to 2133, then possible anthem to 2136:05 signal off. Just below readability, but best signal yet. Apparently carrier +USB as nothing heard tuned in LSB. (25 Sept.)
(Dave Valko, Dunlo, PA, USA, Perseus SDR, 153 foot Delta Loop, and Wellbrook ALA1530S, cumbredx yg via DXLD)

15474.97, LRA36, RN Arcángel, Spanish talks about Argentina following with tango music, good strong signal and clear audio. Time was at 1905 UT, best peak in USB, Sept 29. RX=Icom 7410 + End Fed antenna. 73,
(Maurits van Driessche, Belgium, HCDX via DXLD)

15476, LRA 36, Radio Nacional Arcángel San Gabriel, Base Esperanza, 1928-2005, 29-09, songs and comments in Spanish, mentioned Argentina. Good signal for moments today. 14221 to 24222. Also listened 1935-1945, 30-09, Spanish comments and songs. 1432. (Manuel Méndez, Lugo, Spain, Logs in Lugo, Tecsun PL-880, Degen DE 31MS active loop antenna, dxldyg via DXLD)

ARGENTINA - RAE Buenos Aires 15345v kHz is Sept 25 at 2020 UT NOT ON AIR. RAE transmitter at Buenos Aires are at least 35 years old, Harris TX type of 1977 year. (wb, wwdxc BC-DX TopNews Oct 5)

15345 kHz back on air since October 6. (Michael Bethge, Germany)

Quick installation of a relais via Kall on 3985 khz for the German broadcast past 2100 UTC. Eventually that will last longer like those of R Mongolia. Meanwhile RAE is already on air again directly, but due to winter conditions hardly to hear on 15345 that time (why don't they change to 11710?), especially when sunspot numbers are plunging below 100. we

AUSTRIA [BOLIVIA] - 6155, Sept 18 at 0538, Ö1 is starting to propagate again during its morning classical music segment, the only token SW broadcast left from Wien. But now it has a weak het slightly on the hi side, which fits for the off-frequency R. Fides, Bolivia, perhaps having left its carrier on all-night. Nothing else scheduled. (gh, DXLD)

BHUTAN - Ein Techniker von All India Radio hat die BBS-Kurzwellensender repariert, so dass die Station Anfang September auch interkontinental gemeldet wurde. Nach Angaben von Mauno Ritola im WRTH Facebook (2. September 2014) sendet der Bhutan Broadcasting Service 00.00-13.00 (MESZ 2.00) Uhr auf 6035 kHz (50 kW). Empfangsberichte sind willkommen über das Webformular bei <http://www.bbs.bt/news/?page_id=7576>.

Not yet heard in Central Europe, perhaps a chance at the beginning of the programme, or in winter short before the end of the programme. we

BOLIVIA - 3310, Radio Mosoj Chaski, Cochabamba, 2335 to 2340 YL in Quechua, 1000 to 1030 YL with good signal, both on 25 September. (Robert Wilkner, Pompano Beach, South Florida, 746Pro, Drake R8, NRD 525, Sony 2010XA, various wire antennas, DXLD)

4409.8, Radio Eco, Reyes, 2330 to 2340 español, difficult signal, 25 September.

4451.1, Radio Santa Ana, Santa Ana de Yacuma, 2330-2355 distorted and under thunder storms, 25 September (Robert Wilkner, Pompano Beach, South Florida, 746Pro, Drake R8, NRD 525, Sony 2010XA, various wire antennas; and XM, Cedar Key, South [sic] Florida, NRD 525D, R8A, E5, via Wilkner, DXLD)

4699.9, Radio San Miguel, Riberalta, 0934 to 1000 in Spanish om chat, weak signal 18 September - always there but need a good opening (XM, Cedar Key, South [sic] Florida, NRD 525D, R8A, E5, via Wilkner; and Robert Wilkner, Pompano Beach, South Florida, 746Pro, Drake R8, NRD 525, Sony 2010XA, various wire antennas; and DXLD)

5580.23, Radio San José, San José de Chiquitos presumed 2350 to 2355 with steady signal in Spanish. (Robert Wilkner, Pompano Beach, South Florida, 746Pro, Drake R8, NRD 525, Sony 2010XA, various wire antennas, DXLD)

6024.98, Red Patria Nueva. 0955 end of news program at t/in, ad block starting with several IDs. Beautiful ID/promo at 0959:40, time ticks, 1000 fanfare and another ID/promo. Great strength and best heard since that one micro-DXpedition about 6 weeks ago. (29 Sept.)
(Dave Valko, Dunlo, PA, USA, Perseus SDR, Wellbrook ALA1530S, and 153 foot Delta Loop, Hard-Core-DX mailing list via DXLD)

6134.80, R. Santa Cruz, Santa Cruz; 7/09 2220-2245, 44444, mxmoderna variada, ID Cuando pienses en música, piensa en Santa Cruz, mx, ID En Santa Cruz la música es diferente, mx, ID Santa Cruz una radio diferente. La recepción la he efectuado del 31/08 al 14/09 en compañía de mi sabueso Icom IC R72 acompañado del Mizuho KX-3, una antena de hilo largo de 12 metros y una antena loop. Muchos 128's PFA.
(Pedro F Arrunátegui, Perú, Sept Chasqui DX, DXLD)

BRAZIL - 6010.05, Sep 27 0001, R Inconfidência back after long absence. Nice to see a reactivation. ID with frequency. Next night at 2255 on 6110.035 (Thomas Nilsson, Sweden, SW Bulletin Sept 28 via WOR 1741, DXLD)

In A-DX: 6010 kHz, 27.9 0430, Inconfidência ist zurück! Es wird in Listen informiert dass jetzt mit 25 kW (vorher 5 kW) gesendet wird. (Rudolf Grimm, São Bernardo SP, BRASILIEN via A-DX)

3375.1 Radio Municipal Sao Gabriel da Cachoeira, at 0945 UT om in Portuguese under t-storm static, same man at 0950 UT on 18 Sept. (Robert Wilkner-FL-USA, DXplorer Sept 28)

11764.727 RSDA Brazil logged at 0130 UT on Oct 2nd.

11780.010 RNA Brasilia in BrasPortuguese live coverage of football match at 0132 UT on Oct 2. MACHINE GUNE spoken reporter live report heard. S=9+5dB -74dBm.

11815.029 R Brazil Central, at 0125 UT Oct 2 same football live coverage like \\ RNB 11780 kHz, S=6 or -84dBm much weaker.

11854.961 tiny R Aparecida Portuguese progr just on threshold logged here in Germany, 0121 UT on Oct 2. (wb, wwdxc BC-DX TopNews Oct 2)

11765.725 Sermon BrazPort SRDA progr at 0103 UT on Oct 4, and 11815.035 kHz Radio Brasil Central at 0057 UT on Oct 4, S=5 signal into southern Germany.

9664.756 R Voz Missionaria, in BrazPortuguese at 0145 UT Oct 4, tiny signal S=4-5 or -99dBm.

9645.395 R Bandeirantes, weak and tiny signal strength, only S=3-4 or -108dBm on threshold level, at 0148 UT on Oct 4.

15190.195 Radio Inconfidencia, Belo Horizonte MG, whistle heterodyne whistle tone against Brother Stair / RMI Okeechobee Florida outlet even 15190 kHz at 0635 UT on Oct 5.
(wb, wwdxc BC-DX TopNews Oct 4 / 5)

CANADA - CFRX 6070 kHz Toronto coming back. Now for some good news for a change! Steve Canney, who is the QSL manager for CFRX, tells us that the transmitter, which had been off the air for quite a while, has been repaired and is running into a dummy load to make sure everything is working properly. The plan is to switch it over to the antenna next week. Hopefully, it will be heard despite RHC having recently taken over its 6070 kHz frequency. Now, wouldn't it be a show of good faith on the part of RHC to move to another frequency? (Mark Coady, Sept 22, ODXA YRX via dxld)

CHINA - Additional unscheduled frequencies of CRI:

0700-0757 on 17875 KUN 500 kW / 175 deg to SEAs Cantonese
0830-0927 on 17705 KUN 500 kW / 177 deg to SEAs Indonesian
// frequency 17735 KUN 100 kW / 175 deg to SEAs Indonesian
// frequency 15115 KUN 100 kW / 175 deg to SEAs Indonesian, not heard today
// frequency 15135 KUN 500 kW / 177 deg to SEAs Indonesian, QRM RL Ru 15130

6

1700-1757 on 7375 KUN 500 kW / 283 deg to CEAF Hindi.
(DX RE MIX NEWS # 874)

CUBA [FRANCE] - Observations of Radio República Sept 7 & 11:

0100-0200 9490 F 250 kW / 275 deg to Cuba Spanish without jamming
0200-0300 9490 F 250 kW / 275 deg to Cuba Spanish + Cuban jamming
(DX MIX NEWS #871 from Georgi Bancov and Ivo Ivanov, Sept 16 via DXLD)

ECUADOR - 6050, on Oct 4 at 0056 UT, poor signal with talk in Spanish(?) and music. Likely HCJB as frequent chex last few weeks have found channel vacant, and we know HCJB went off the air at the same time as the big earthquake August 12. Yes, HCJB ID barely audible at 0059:40 UT and characteristic automatic and accurate 3+1 timesignal to 0100 UT, last pip prolonged at same pitch as others, into language, Kichwa? So did they fix their old transmitter or get a new one as they were reportedly seeking? Listen for their sign-off circa 0500 UT with National Anthem. (Glenn Hauser-OK-USA, dxld Oct 4)

Meanwhile they fixed their old transmitter, and they are already seeking for a new transmitter as to a note in A-DX:
... Fernziel bleibt ein volltransistorisierter Sender (plug 'n pray ...) mit einer Leistung von 10 kW, der im Notfall dann auch am Generator hängt. Die jetzige Kapazität reicht für den linearen TX nicht aus.
Kleiner Hinweis für alle QSL-Karten- und Briefmarkensammler: eine Liste mit den noch verfügbaren HCJB-QSLs gibt es auf unserer Homepage: <<http://andenstimme.org/empfang/qsld-galerie>>
(Horst Rosiak)

ETHIOPIA - 5950, Voz da Revolução do Tigrê, Geja Dera (ou Geja Jawe?), 1747-1810, 14/9, tigrínia, texto, canções; 35433.

6110, R. Fana, Geja Dera (ou Geja Jawe?), 1746-1806, 14/9, amárico (segundo listas), canções locais, textzto; 44433, QRM da mesma freq. até às 1800.
(Carlos Gonçalves, PORTUGAL, dxldyg via DXLD)

Yes, 6090 is back. Observed on Sept 30 -1900 UT, then lost under very strong CRI, no sign-off observed. Amhara Regional State Radio confirmed by others. Also 5950, 6030, 6110 kHz with Ethiopian stations. R. Ethiopia transmitter was on 7236.4 kHz and closed down around 1800 UT. It seems to sign-off no later than 1800 UT on Tue, Thu, Fri, Sat, Sun - but also observed until after 1900 UT on certain days (If I remember correctly, Fri 26th was such a day), probably clandestine to ERI.
(Thorsten Hallmann-D, <www.muenster.org/uwz/ms-alt/africalist/> dxld Sept 30) Observations on Sept. 13:

Fana Broadcasting Corporation, Radio Fana
0300-2100 on 6110 AAB 100 kW / non-dir to ETH Amharic

Voice of Tigray Ravolution
0300-2000 on 5950 GEJ 100 kW / non-dir to ETH Tigrinya, co-ch VIRI
IRIB in Tajik

Radio Oromiya, back on the air
0300-2000 on 6030 GEJ 100 kW / non-dir to ETH Afar Oromo (DX RE MIX
NEWS #871 from Georgi Bancov and Ivo Ivanov, Sept 16 via DXLD)

Sept. 13:
Radio Oromiya in Afar Oromo 1921 on 6030 Addis Ababa, Gedja

Radio Oromiya in Afar Oromo 1929 on 6030 Addis Ababa, Gedja

Radio Oromiya in Afar Oromo 1957 on 6030 Addis Ababa, Gedja
(Ivo Ivanov, Sofia, Bulgaria, dxldyg via DXLD)

ETHIOPIA [non] - Two more clandestine broadcasts via Kostinbrod and Issoudun on Sept.14:

Dimtse Radio Erena:
1700-1730 on 11855 S0F 050 kW / 195 deg to EAF Oromo

Voice of Oromo Liberation:
1700-1800 on 13830 F 100 kW / 125 deg to EAF Afar Oromo Sun
1700-1730 on 13830 F 100 kW / 125 deg to EAF Afar Oromo Wed
1730-1800 on 13830 F 100 kW / 125 deg to EAF Amharic Wed
(Ivo Ivanov, QTH: Sofia, Bulgaria, dxldyg via DXLD)

FINLAND - 25000, Time Signal Station Mikes, 1931-1940, 12-09, time signals, beeps with the seconds and no beep at second 59. 24322. Also 1703-1714, 13-09, time signals. 24332.

(Manuel Méndez, Lugo, Spain, Logs in Lugo, Tecsun PL-880, cable antenna, 8 meters, dxldyg via DXLD)

FRANCE - 1278 France Selestat MW to be ceased for ever in 2015. TdF are going to take the transmitter currently carrying France-Bleu on 1278 kHz (300 kW) out of service on June 1st 2015. The reason: high maintenance cost of the transmitter and the bad repair of the premises, the building would have to be torn down and rebuilt. (Bernard Enfelder, mwmasts Oct 10)

This will hit the broadcasts in German / Alsace dialect especially. we

GERMANY - Deutsche Welle trennt sich von Mitarbeitern.

Beim Auslandssender Deutsche Welle gibt es weitere Einschnitte fuer die Mitarbeiter. Am Standort Bonn sind 170 freie Mitarbeiter von groesseren Einsparungen betroffen, in Berlin erhalten 60 Freiberufler ueberhaupt keine neuen Auftraege mehr. Nach Angaben des Personalrates sind vor allem die deutschsprachigen Angebote von den Einschnitten betroffen. Die Mitarbeiter-Vertreter befuerchten sogar eine Schliessung des Standortes in Bonn. Die Deutsche Welle muss seit Jahren sparen. So wurde unter anderem vor zwei Jahren das deutschsprachige Radioprogramm eingestellt.

source: WDR.de (WDR, via Tom DF5JL, A-DX Sept 13)

Im letzten Jahrzehnt war's die Kurzwelle, die ausgemerzt wurde, jetzt sind es die der Aussendetaetigkeit entsprechenden – UEBERFLUESSIGEN Mitarbeiter.

DWL Budget. Zuletzt wurden 38% fuer Personal- und Pensionszahlungen im Etat ausgewiesen, aber nur noch 8% fuer die Technik / Sender in Sines, Trinco und Kigali. Den Bonner Sender mit Sat.1 Intendant braucht's nicht [mehr].

(wb df5sx, DWL Hörer seit 1958 ...)

DWL in period B-14 - Sorted by frequency:

6040	0300	0400	48SW, 52E, 53NW	RRW	250	0	0	935	Swa	RRW	DWL
7425	0300	0400	48SW, 52E, 53NW	RRW	250	0	0	930	Swa	RRW	DWL
7425	0400	0500	47E, 48, 52, 53, 57N	RRW	250	180	0	146	Eng	RRW	DWL
7425	0500	0600	48SW, 52NE, 52S, 53, 57N	RRW	250	180	0	146	Eng	RRW	DWL
9600	0400	0500	47E, 48, 52, 53, 57N	RRW	250	180	0	157	Eng	RRW	DWL
9600	0500	0600	48SW, 52NE, 52S, 53, 57N	RRW	250	180	0	157	Eng	RRW	DWL
9610	1600	1700	48	RRW	250	30	0	156	Amh	RRW	DWL
9800	0400	0500	46E, 47, 48W, 52, 53, 57N	RRW	250	0	0	935	Eng	RRW	DWL
9800	0500	0600	46E, 47, 48W, 52, 53, 57N	RRW	250	0	0	935	Eng	RRW	DWL
9800	0630	0700	46, 47W	STP	100	0	0	105	Hau	STP	DWL
9800	0700	0800	46E, 47, 48W, 52, 53W, 57N	RRW	250	0	0	935	Eng	RRW	DWL
9800	1000	1100	48SW, 52E, 53NW	RRW	250	0	0	935	Swa	RRW	DWL
9800	1500	1600	46SE, 47S, 48SW, 52, 53W, 57NE	RRW	250	0	0	935	Swa	RRW	DWL
9800	1600	1700	48	RRW	250	0	0	935	Amh	RRW	DWL
9800	1700	1800	37S, 46, 47, 52	RRW	250	295	0	217	Fra	RRW	DWL
11800	0630	0700	46, 47W	RRW	250	295	0	146	Hau	RRW	DWL
11800	0700	0800	37S, 38W, 46, 47, 52, 48W, 53W	RRW	250	295	0	146	Eng	RRW	DWL
11800	1000	1100	48SW, 52E, 53NW	RRW	250	0	0	930	Swa	RRW	DWL
11800	1500	1600	46SE, 47S, 48SW, 52, 53W, 57NE	RRW	250	0	0	930	Swa	RRW	DWL
11800	1600	1700	48	RRW	250	30	30	217	Amh	RRW	DWL
11850	1800	1900	46, 47W	F	500	170	0	216	Hau	F	DWL
12005	0630	0700	46, 47W	RRW	250	295	0	146	Hau	RRW	DWL
12005	0700	0800	37S, 38W, 46, 47, 52, 48W, 53W	RRW	250	295	0	146	Eng	RRW	DWL
12005	1300	1400	46, 47W	RRW	250	295	0	146	Hau	RRW	DWL
12005	1700	1800	37S, 46, 47, 52	RRW	250	295	0	146	Fra	RRW	DWL
12005	1800	1900	46, 47W	RRW	250	295	0	146	Hau	RRW	DWL
15215	0800	0830	40E, 41NW	UAE	250	45	-15	146	Pus	UAE	DWL
15215	0830	0900	40E, 41NW	UAE	250	45	-15	146	Prs	UAE	DWL
15215	1330	1400	40E, 41NW	VAT	250	82	0	216	Prs	CVA	DWL
15215	1400	1430	40E, 41NW	VAT	250	82	0	216	Pus	CVA	DWL
15275	0300	0400	48SW, 52E, 53NW	CLN-TRM	250	255	-15	216	Swa	CLN	DWL
15275	0400	0500	46, 47, 48, 52, 53, 57	UAE	250	225	-15	148	Eng	UAE	DWL
15275	0500	0600	46E, 47, 48, 52, 53, 57N	MDG	250	300	0	105	Eng	MDG	DWL
15275	0700	0800	37, 38, 39, 46, 47, 48, 52, 53, 57	RRW	250	0	0	927	Eng	RRW	DWL
15275	1000	1100	48SW, 52E, 53NW	MDG	250	300	0	105	Swa	MDG	DWL
15275	1300	1400	46, 47W	RRW	250	310	15	217	Hau	RRW	DWL
15275	1600	1700	48	CLN-TRM	250	270	0	216	Amh	CLN	DWL

15275	1700	1800	37S, 46, 47, 52	RRW	250	295	0	217	Fra	RRW	DWL
15275	1800	1900	46, 47W	RRW	250	310	15	217	Hau	RRW	DWL
15275	2030	2100	37S, 38W, 46, 47, 52, 48W, 53W	RRW	250	295	0	217	Eng	RRW	DWL
15410	1600	1700	48	RRW	250	0	0	927	Amh	RRW	DWL
15410	1700	1800	37, 38, 46, 47, 52	F	500	165	0	217	Fra	F	DWL
15640	0800	0830	40E, 41NW	UAE	250	45	-15	146	Pus	UAE	DWL
15640	0830	0900	40E, 41NW	UAE	250	45	-15	146	Prs	UAE	DWL
15640	1330	1400	40E, 41NW	UAE	250	45	-15	146	Prs	UAE	DWL
15640	1400	1430	40E, 41NW	UAE	250	45	-15	146	Pus	UAE	DWL
17640	0800	0830	40E, 41NW	CLN-TRM	250	335	-10	206	Pus	CLN	DWL
17640	0830	0900	40E, 41NW	CLN-TRM	250	335	-10	206	Prs	CLN	DWL
17640	1330	1400	40E, 41NW	CLN-TRM	250	335	-10	206	Prs	CLN	DWL
17640	1400	1430	40E, 41NW	CLN-TRM	250	335	-10	206	Pus	CLN	DWL
17800	0630	0700	46, 47W	ERV	500	245	0	218	Hau	ARM	DWL
17800	0700	0800	38, 39S, 46, 47, 48, 52, 53, 57N	ERV	500	245	0	218	Eng	ARM	DWL
17800	0800	0830	40E, 41NW	CLN-TRM	250	335	-10	206	Pus	CLN	DWL
17800	0830	0900	40E, 41NW	CLN-TRM	250	335	-10	206	Prs	CLN	DWL
17800	1300	1400	46, 47W	RRW	250	295	0	217	Hau	RRW	DWL
17800	1500	1600	48SW, 52E, 53NW	UAE	250	215	0	219	Swa	UAE	DWL
17800	1700	1800	37, 38, 46, 47, 52	F	500	194	9	196	Fra	F	DWL
17800	1800	1900	46, 47W	RRW	250	295	0	217	Hau	RRW	DWL
17800	1930	2000	37S, 38W, 46, 47, 52, 48W, 53W	RRW	250	295	0	217	Eng	RRW	DWL
17800	2000	2030	37S, 38W, 46, 47, 52, 48W, 53W	RRW	250	295	0	217	Eng	RRW	DWL
21780	0630	0700	46, 47W	UAE	250	260	0	219	Hau	UAE	DWL
21780	1300	1400	46, 47W	UAE	250	260	0	219	Hau	UAE	DWL

No DRM mode at all. 4 Oct 2014

Sorted by language (no GERMAN since 2011 ...):

9610	1600	1700	48	RRW	250	30	0	156	Amh	RRW	DWL
9800	1600	1700	48	RRW	250	0	0	935	Amh	RRW	DWL
11800	1600	1700	48	RRW	250	30	30	217	Amh	RRW	DWL
15275	1600	1700	48	CLN-TRM	250	270	0	216	Amh	CLN	DWL
15410	1600	1700	48	RRW	250	0	0	927	Amh	RRW	DWL
7425	0400	0500	47E, 48, 52, 53, 57N	RRW	250	180	0	146	Eng	RRW	DWL
9600	0400	0500	47E, 48, 52, 53, 57N	RRW	250	180	0	157	Eng	RRW	DWL
9800	0400	0500	46E, 47, 48W, 52, 53, 57N	RRW	250	0	0	935	Eng	RRW	DWL
15275	0400	0500	46, 47, 48, 52, 53, 57	UAE	250	225	-15	148	Eng	UAE	DWL
7425	0500	0600	48SW, 52NE, 52S, 53, 57N	RRW	250	180	0	146	Eng	RRW	DWL
9600	0500	0600	48SW, 52NE, 52S, 53, 57N	RRW	250	180	0	157	Eng	RRW	DWL
9800	0500	0600	46E, 47, 48W, 52, 53, 57N	RRW	250	0	0	935	Eng	RRW	DWL
15275	0500	0600	46E, 47, 48, 52, 53, 57N	MDG	250	300	0	105	Eng	MDG	DWL
9800	0700	0800	46E, 47, 48W, 52, 53W, 57N	RRW	250	0	0	935	Eng	RRW	DWL
11800	0700	0800	37S, 38W, 46, 47, 52, 48W, 53W	RRW	250	295	0	146	Eng	RRW	DWL
12005	0700	0800	37S, 38W, 46, 47, 52, 48W, 53W	RRW	250	295	0	146	Eng	RRW	DWL
15275	0700	0800	37, 38, 39, 46, 47, 48, 52, 53, 57	RRW	250	0	0	927	Eng	RRW	DWL
17800	0700	0800	38, 39S, 46, 47, 48, 52, 53, 57N	ERV	500	245	0	218	Eng	ARM	DWL
17800	1930	2000	37S, 38W, 46, 47, 52, 48W, 53W	RRW	250	295	0	217	Eng	RRW	DWL
17800	2000	2030	37S, 38W, 46, 47, 52, 48W, 53W	RRW	250	295	0	217	Eng	RRW	DWL
15275	2030	2100	37S, 38W, 46, 47, 52, 48W, 53W	RRW	250	295	0	217	Eng	RRW	DWL
9800	1700	1800	37S, 46, 47, 52	RRW	250	295	0	217	Fra	RRW	DWL
12005	1700	1800	37S, 46, 47, 52	RRW	250	295	0	146	Fra	RRW	DWL
15275	1700	1800	37S, 46, 47, 52	RRW	250	295	0	217	Fra	RRW	DWL
15410	1700	1800	37, 38, 46, 47, 52	F	500	165	0	217	Fra	F	DWL
17800	1700	1800	37, 38, 46, 47, 52	F	500	194	9	196	Fra	F	DWL
9800	0630	0700	46, 47W	STP	100	0	0	105	Hau	STP	DWL
11800	0630	0700	46, 47W	RRW	250	295	0	146	Hau	RRW	DWL
12005	0630	0700	46, 47W	RRW	250	295	0	146	Hau	RRW	DWL
17800	0630	0700	46, 47W	ERV	500	245	0	218	Hau	ARM	DWL
21780	0630	0700	46, 47W	UAE	250	260	0	219	Hau	UAE	DWL
12005	1300	1400	46, 47W	RRW	250	295	0	146	Hau	RRW	DWL
15275	1300	1400	46, 47W	RRW	250	310	15	217	Hau	RRW	DWL

17800	1300	1400	46,47W	RRW	250	295	0	217	Hau	RRW	DWL
21780	1300	1400	46,47W	UAE	250	260	0	219	Hau	UAE	DWL
11850	1800	1900	46,47W	F	500	170	0	216	Hau	F	DWL
12005	1800	1900	46,47W	RRW	250	295	0	146	Hau	RRW	DWL
15275	1800	1900	46,47W	RRW	250	310	15	217	Hau	RRW	DWL
17800	1800	1900	46,47W	RRW	250	295	0	217	Hau	RRW	DWL
15215	0830	0900	40E,41NW	UAE	250	45	-15	146	Prs	UAE	DWL
15640	0830	0900	40E,41NW	UAE	250	45	-15	146	Prs	UAE	DWL
17640	0830	0900	40E,41NW	CLN-TRM	250	335	-10	206	Prs	CLN	DWL
17800	0830	0900	40E,41NW	CLN-TRM	250	335	-10	206	Prs	CLN	DWL
15215	1330	1400	40E,41NW	VAT	250	82	0	216	Prs	CVA	DWL
15640	1330	1400	40E,41NW	UAE	250	45	-15	146	Prs	UAE	DWL
17640	1330	1400	40E,41NW	CLN-TRM	250	335	-10	206	Prs	CLN	DWL
15215	0800	0830	40E,41NW	UAE	250	45	-15	146	Pus	UAE	DWL
15640	0800	0830	40E,41NW	UAE	250	45	-15	146	Pus	UAE	DWL
17640	0800	0830	40E,41NW	CLN-TRM	250	335	-10	206	Pus	CLN	DWL
17800	0800	0830	40E,41NW	CLN-TRM	250	335	-10	206	Pus	CLN	DWL
15215	1400	1430	40E,41NW	VAT	250	82	0	216	Pus	CVA	DWL
15640	1400	1430	40E,41NW	UAE	250	45	-15	146	Pus	UAE	DWL
17640	1400	1430	40E,41NW	CLN-TRM	250	335	-10	206	Pus	CLN	DWL
6040	0300	0400	48SW,52E,53NW	RRW	250	0	0	935	Swa	RRW	DWL
7425	0300	0400	48SW,52E,53NW	RRW	250	0	0	930	Swa	RRW	DWL
15275	0300	0400	48SW,52E,53NW	CLN-TRM	250	255	-15	216	Swa	CLN	DWL
9800	1000	1100	48SW,52E,53NW	RRW	250	0	0	935	Swa	RRW	DWL
11800	1000	1100	48SW,52E,53NW	RRW	250	0	0	930	Swa	RRW	DWL
15275	1000	1100	48SW,52E,53NW	MDG	250	300	0	105	Swa	MDG	DWL
9800	1500	1600	46SE,47S,48SW,52,53W,57NE	RRW	250	0	0	935	Swa	RRW	DWL
11800	1500	1600	46SE,47S,48SW,52,53W,57NE	RRW	250	0	0	930	Swa	RRW	DWL
17800	1500	1600	48SW,52E,53NW	UAE	250	215	0	219	Swa	UAE	DWL

sorted by time:

6040	0300	0400	48SW,52E,53NW	RRW	250	0	0	935	Swa	RRW	DWL
7425	0300	0400	48SW,52E,53NW	RRW	250	0	0	930	Swa	RRW	DWL
15275	0300	0400	48SW,52E,53NW	CLN-TRM	250	255	-15	216	Swa	CLN	DWL
7425	0400	0500	47E,48,52,53,57N	RRW	250	180	0	146	Eng	RRW	DWL
9600	0400	0500	47E,48,52,53,57N	RRW	250	180	0	157	Eng	RRW	DWL
9800	0400	0500	46E,47,48W,52,53,57N	RRW	250	0	0	935	Eng	RRW	DWL
15275	0400	0500	46,47,48,52,53,57	UAE	250	225	-15	148	Eng	UAE	DWL
7425	0500	0600	48SW,52NE,52S,53,57N	RRW	250	180	0	146	Eng	RRW	DWL
9600	0500	0600	48SW,52NE,52S,53,57N	RRW	250	180	0	157	Eng	RRW	DWL
9800	0500	0600	46E,47,48W,52,53,57N	RRW	250	0	0	935	Eng	RRW	DWL
15275	0500	0600	46E,47,48,52,53,57N	MDG	250	300	0	105	Eng	MDG	DWL
9800	0630	0700	46,47W	STP	100	0	0	105	Hau	STP	DWL
11800	0630	0700	46,47W	RRW	250	295	0	146	Hau	RRW	DWL
12005	0630	0700	46,47W	RRW	250	295	0	146	Hau	RRW	DWL
17800	0630	0700	46,47W	ERV	500	245	0	218	Hau	ARM	DWL
21780	0630	0700	46,47W	UAE	250	260	0	219	Hau	UAE	DWL
9800	0700	0800	46E,47,48W,52,53W,57N	RRW	250	0	0	935	Eng	RRW	DWL
11800	0700	0800	37S,38W,46,47,52,48W,53W	RRW	250	295	0	146	Eng	RRW	DWL
12005	0700	0800	37S,38W,46,47,52,48W,53W	RRW	250	295	0	146	Eng	RRW	DWL
15275	0700	0800	37,38,39,46,47,48,52,53,57	RRW	250	0	0	927	Eng	RRW	DWL
17800	0700	0800	38,39S,46,47,48,52,53,57N	ERV	500	245	0	218	Eng	ARM	DWL
15215	0800	0830	40E,41NW	UAE	250	45	-15	146	Pus	UAE	DWL
15640	0800	0830	40E,41NW	UAE	250	45	-15	146	Pus	UAE	DWL
17640	0800	0830	40E,41NW	CLN-TRM	250	335	-10	206	Pus	CLN	DWL
17800	0800	0830	40E,41NW	CLN-TRM	250	335	-10	206	Pus	CLN	DWL
15215	0830	0900	40E,41NW	UAE	250	45	-15	146	Prs	UAE	DWL
15640	0830	0900	40E,41NW	UAE	250	45	-15	146	Prs	UAE	DWL
17640	0830	0900	40E,41NW	CLN-TRM	250	335	-10	206	Prs	CLN	DWL
17800	0830	0900	40E,41NW	CLN-TRM	250	335	-10	206	Prs	CLN	DWL
9800	1000	1100	48SW,52E,53NW	RRW	250	0	0	935	Swa	RRW	DWL
11800	1000	1100	48SW,52E,53NW	RRW	250	0	0	930	Swa	RRW	DWL

15275 1000 1100 48SW, 52E, 53NW	MDG 250 300 0 105 Swa MDG DWL
12005 1300 1400 46, 47W	RRW 250 295 0 146 Hau RRW DWL
15275 1300 1400 46, 47W	RRW 250 310 15 217 Hau RRW DWL
17800 1300 1400 46, 47W	RRW 250 295 0 217 Hau RRW DWL
21780 1300 1400 46, 47W	UAE 250 260 0 219 Hau UAE DWL
15215 1330 1400 40E, 41NW	VAT 250 82 0 216 Prs CVA DWL
15640 1330 1400 40E, 41NW	UAE 250 45 -15 146 Prs UAE DWL
17640 1330 1400 40E, 41NW	CLN-TRM 250 335 -10 206 Prs CLN DWL
15215 1400 1430 40E, 41NW	VAT 250 82 0 216 Pus CVA DWL
15640 1400 1430 40E, 41NW	UAE 250 45 -15 146 Pus UAE DWL
17640 1400 1430 40E, 41NW	CLN-TRM 250 335 -10 206 Pus CLN DWL
9800 1500 1600 46SE, 47S, 48SW, 52, 53W, 57NE	RRW 250 0 0 935 Swa RRW DWL
11800 1500 1600 46SE, 47S, 48SW, 52, 53W, 57NE	RRW 250 0 0 930 Swa RRW DWL
17800 1500 1600 48SW, 52E, 53NW	UAE 250 215 0 219 Swa UAE DWL
9610 1600 1700 48	RRW 250 30 0 156 Amh RRW DWL
9800 1600 1700 48	RRW 250 0 0 935 Amh RRW DWL
11800 1600 1700 48	RRW 250 30 30 217 Amh RRW DWL
15275 1600 1700 48	CLN-TRM 250 270 0 216 Amh CLN DWL
15410 1600 1700 48	RRW 250 0 0 927 Amh RRW DWL
9800 1700 1800 37S, 46, 47, 52	RRW 250 295 0 217 Fra RRW DWL
12005 1700 1800 37S, 46, 47, 52	RRW 250 295 0 146 Fra RRW DWL
15275 1700 1800 37S, 46, 47, 52	RRW 250 295 0 217 Fra RRW DWL
15410 1700 1800 37, 38, 46, 47, 52	F 500 165 0 217 Fra F DWL
17800 1700 1800 37, 38, 46, 47, 52	F 500 194 9 196 Fra F DWL
11850 1800 1900 46, 47W	F 500 170 0 216 Hau F DWL
12005 1800 1900 46, 47W	RRW 250 295 0 146 Hau RRW DWL
15275 1800 1900 46, 47W	RRW 250 310 15 217 Hau RRW DWL
17800 1800 1900 46, 47W	RRW 250 295 0 217 Hau RRW DWL
17800 1930 2000 37S, 38W, 46, 47, 52, 48W, 53W	RRW 250 295 0 217 Eng RRW DWL
17800 2000 2030 37S, 38W, 46, 47, 52, 48W, 53W	RRW 250 295 0 217 Eng RRW DWL
15275 2030 2100 37S, 38W, 46, 47, 52, 48W, 53W	RRW 250 295 0 217 Eng RRW DWL

(B-14 Oct 4)

R Euro 24, as it calls itself, now often heard on 6150 with a medium signal. Signal strength indicates a transmitter not more than 1 kW. Announcer seems to be Sven Hallo ..., short news several times in the hour, niveau like a private local FM station Beatles (rarely heard pieces, but no Lucy in the Sky ...) and alike music format. (we)

INDONESIA - 3325, RRI Palangkaraya, 1226, Sept 22, to end the Jakarta news with the distinctive patriotic song Garuda Pancasila; // RRI Wamena (4869.91) and RRI Ternate (3344.87)
(Ron Howard, Calif., E1 & CR-1, dxldyg via DXLD)

4869.925, RRI Wamena, Propinsi Papua, Bahasa Indonesia, at 1012 UT on Sept 20, fluttery S=8-9 signal, -70dBm. Singer like Mahalia Jackson style. (wb, heard on remote Perseus Net radio in Sydney, Australia, BC-DX TopNews Sept 20)

4869.924, RRI Wamena, 20 SEPT 2014, 1050 very strong in Indonesian
(Nick VK2DX Hacko, Sydney NSW, Perseus, SAL-30, dxldyg via DXLD)

4869.92, RRI Wamena, 22 SEPT 2014, ID Radio Republik Indonesia 1056 good signal, Indonesian.
(Nick VK2DX Hacko, Sydney NSW, dxldyg via DXLD)

9525.90, V. of Indonesia, Sep 18 1331-1341, 45444, English, Talk and music, ID at 1332
(Kouji Hashimoto, JAPAN, RX, IC-R75, NRD-525+RD-9830, NRD-515, NRD-345, Satellit 750, DE-1121; ANT, 130m Sloper Wire, 303WA, DXLD)

Excellent reception of Voice of Indonesia on my Sony ICF-SW7600GR and 10 mtr long wire this afternoon: 9525.90 kHz (9526 on Sony) has peaked at SIO 444 with Indonesian 1400-1500 UT, Chinese 1500-1600, and Arabic from 1600. Still very good reception at 1805, now in German, SIO 343. JRC NRD-525 / ALA1530LF, Sent from my iPad. (John Hoad, Faversham Kent UK, Sept 18, BDXC-UK yg via DXLD)

9525.91, V. of Indonesia:
Sep 23 1235-1245, Japanese, News and Indonesian courses, ID at 1236.
Sep 23 1324-1330, 44444, English, News, ID at 1325 and 1328
(Kouji Hashimoto, JAPAN, RX, IC-R75, NRD-525+RD-9830, NRD-515, NRD-345, Satellit 750, DE-1121; ANT, 130m Sloper Wire, 303WA, DXLD)

JAPAN - Updated languages schedule of Shiokaze Sea Breeze:

1330-1400 on 6020 YAM 100 kW / 280 deg KRE Japanese Mo
 1330-1400 on 6020 YAM 100 kW / 280 deg KRE Chinese Tue
 1330-1400 on 6020 YAM 100 kW / 280 deg KRE Korean Wed, ex Japanese
 1330-1400 on 6020 YAM 100 kW / 280 deg KRE Korean Thu, ex English
 1330-1400 on 6020 YAM 100 kW / 280 deg KRE Korean Fr
 1330-1400 on 6020 YAM 100 kW / 280 deg KRE Korean Sa
 1330-1400 on 6020 YAM 100 kW / 280 deg KRE Japanese Su
 1400-1430 on 6020 YAM 100 kW / 280 deg KRE Japanese Mo
 1400-1430 on 6020 YAM 100 kW / 280 deg KRE Korean Tue
 1400-1430 on 6020 YAM 100 kW / 280 deg KRE Korean Wed, ex Japanese
 1400-1430 on 6020 YAM 100 kW / 280 deg KRE Japanese Thu, ex English
 1400-1430 on 6020 YAM 100 kW / 280 deg KRE Korean Fr
 1400-1430 on 6020 YAM 100 kW / 280 deg KRE Japanese Sa
 1400-1430 on 6020 YAM 100 kW / 280 deg KRE Korean Su
 alt. frequencies: 5910/5985/6120/6135/6175

1600-1630 on 6165 YAM 100 kW / 280 deg KRE Japanese Mo
 1600-1630 on 6165 YAM 100 kW / 280 deg KRE Chinese Tue
 1600-1630 on 6165 YAM 100 kW / 280 deg KRE Korean Wed, ex Japanese
 1600-1630 on 6165 YAM 100 kW / 280 deg KRE Korean Thu, ex English
 1600-1630 on 6165 YAM 100 kW / 280 deg KRE Korean Fr
 1600-1630 on 6165 YAM 100 kW / 280 deg KRE Korean Sa
 1600-1630 on 6165 YAM 100 kW / 280 deg KRE Japanese Su
 1630-1700 on 6165 YAM 100 kW / 280 deg KRE Japanese Mo
 1630-1700 on 6165 YAM 100 kW / 280 deg KRE Korean Tue
 1630-1700 on 6165 YAM 100 kW / 280 deg KRE Korean Wed, ex Japanese
 1630-1700 on 6165 YAM 100 kW / 280 deg KRE Japanese Thu, ex English
 1630-1700 on 6165 YAM 100 kW / 280 deg KRE Korean Fr
 1630-1700 on 6165 YAM 100 kW / 280 deg KRE Japanese Sa
 1630-1700 on 6165 YAM 100 kW / 280 deg KRE Korean Su
 alt. frequencies: 5910/6020/6075/6090/6135

(Ivo Ivanov, Bulgaria, dxldyg via WORLD OF RADIO 1740, DXLD)

MADAGASCAR - *Three years behind the schedule ...* In addition to the station in Alaska [which has already problems with the second transmitter - we], a new site in Madagascar is being developed into a facility that will broadcast, via three antennae, throughout Europe and Western Asia, the Middle East (in the Arabic language), Africa, India, and even across the Atlantic to South America. Once this station is operational—with God's help in 2011—roughly eighty percent of the people of the world will be within the sound of our broadcast voice ...

B-11 WWCB / KNLS site in Madagascar history ...

Continental txs were still in USA on HFCC conference in Sept 2011.

9320	0400	0500	48, 53, 47, 52, 46, 38, 37, 13, 12	MWV	100	295	218	ENG	WCB
9320	1800	1900	48, 52, 47, 52, 46, 38, 3	MWV	100	295	218	ENG	WCB
9365	1900	2000	48, 47, 38, 28, 39, 37, 53, 47	MWV	100	340	218	ARA	WCB
9365	2000	2100	48, 47, 38, 28, 39, 37, 53, 47	MWV	100	340	218	ARA	WCB
9980	1800	1900	39, 40, 29, 48, 38, 28	MWV	100	355	218	ARA	WCB
11520	1800	1900	39, 29, 40, 19, 28, 48, 38	MWV	100	355	218	RUS	WCB
11520	1900	2000	39, 29, 40, 19, 28, 48, 38	MWV	100	355	218	RUS	WCB
11720	0100	0200	13, 15, 12, 14, 48, 53, 47, 52, 46	MWV	100	250	218	SPN	WCB
11720	0200	0300	13, 15, 12, 14, 48, 52, 47, 52, 46	MWV	100	265	218	SPN	WCB
13630	0200	0300	41, 42, 43, 32, 33	MWV	100	40	218	ENG	WCB
13830	1400	1500	41, 42, 43, 32, 33	MWV	100	40	218	ENG	WCB
15485	1300	1400	41, 42, 43, 44, 49, 33, 32	MWV	100	55	218	CMA	WCB
15735	1500	1600	41, 42, 43, 44, 49, 33, 32	MWV	100	55	218	CMA	WCB

(wb)

MADAGASCAR [and non] - Clandestine and other target broadcasts via Issoudun & Madagascar on Sept. 13

Radio Xoriyo:

1600-1630 on 17630 F 500 kW / 130 deg to Eaf Somali Tue/Sat

Transmissions are jammed by Ethiopia with white noise like broadband DRM

Oromo Voice Radio (Raadiyoo Sagalee Oromoo):

1600-1630 on 17850 F 250 kW / 130 deg to Eaf Oromo/English Mon/Wed/Sat

Transmissions are jammed by Ethiopia with white noise like broadband DRM

Radio Dialogue FM:

1600-1700 on 12105 MDG 250 kW / 265 deg to ZWE Shona/Ndebele/English

Radio Inyabutatu:

1600-1700 on 17500 F 100 kW / 144 deg to CEAF Kinyarwanda Sat

Radio Hilaac:

1700-1730 on 15180 F 500 kW / 130 deg to EAF Somali Sa-Thu

Radio Assenna:

1700-1800 on 15245 F 250 kW / 130 deg to EAF Tigrinya Mo/Thu/Sa

Radio Impala, Radio Mara:

1700-1800 on 17540 MDG 250 kW / 310 deg to SAF Kinyarawanda

Radio Eritrean Forum EYSC:

1800-1900 on 15245 F 250 kW / 130 deg to EAF Arabic Sat

Lutheran World Federation, Voice of Gospel, Sawtu Linjilia

1830-1900 on 15315 F 500 kW / 180 deg to WCAf Fulfulde

More two clandestine broadcasts via Kostinbrod and Issoudun on Sept. 14/15:

Dimtse Radio Erena:

1700-1730 on 11855 SOF 050 kW / 195 deg to EAF Oromo

Voice of Oromo Liberation:

1700-1800 on 13830 F 100 kW / 125 deg to EAF Afar Oromo Su

1700-1730 on 13830 F 100 kW / 125 deg to EAF Afar Oromo Wed

1730-1800 on 13830 F 100 kW / 125 deg to EAF Amharic Wed

Radio Xoriyo:

1600-1630 on 17870 F 500 kW / 130 deg to EAF Somali Mo/Fr

Transmissions are jammed by Ethiopia with white noise like broadband DRM

Oromo Voice Radio, Raadiyoo Sagalee Oromoo

1600-1630 on 17850 F 250 kW / 130 deg to EAF Oromo/English Mon/Wed/Sat

Transmissions are jammed by Ethiopia with white noise like broadband DRM

(DX MIX NEWS #871 from Georgi Bancov and Ivo Ivanov, Sept 16)

MEXICO - 6185 Radio Educacion, extended program. At 0445-0610* UT on Oct 5, Radio Educacion has been closing his short wave transmission at 0500 UT, a pity because conditions to listen this station are better later, at sunrise here in Spain, but today the program is still in the air at 0600 UT with good signal, good news if the extended program will be on air all days.

At 0445 UT program: La Suprema Corte, identification: Radio Educacion, 1060 kHz AM desde la ciudad de Mexico, 100.000 watts de potencia, Radio Educacion, la radio cultural de Mexico. At 0500 UT: Les saludamos cuando comienza un nuevo dia, 5 de octubre, escuchen nuestra musica en el nuevo dia, sigan en la compania de esta emisora mexicana, music. SINPO 24322 at 0445 UT but 34333 at 0610 UT. (Manuel Mendez-ESP, hcdx Oct 5)

MONGOLIA [GERMANY] - 3985, Voice of Mongolia via Kall Krekel, 1903-1910, 20-09, English, news of Mongolia, comments. 23322. (Méndez)

6005, Voice of Mongolia via Kall Krekel, *1730-1741, 20-09, tuning music, identification: Voice of Mongolia, English, comments. 12321.

(Manuel Méndez, Lugo, Spain, Logs in Lugo, Tecsun PL-880, cable antenna, 8 meters, dxldyg via WOR 1740, DXLD)

It is understood that the Voice of Mongolia are temporarily – until [end of 2014, we] - targeting additional broadcasts in English to Central Europe through a ... transmitter at Kall Krekel, Germany. The schedule that is being circulated for these additional broadcasts:

1430 - 1500 UT on 7310

1730 - 1800 UT on 6005

1900 - 1930 UT on 3985

I have tuned in at these times and can hear the same female voice on these frequencies at the stated times. The signal where I live has proved mostly to be very bad with too much noise for the broadcast to be listenable. However what I have heard in those timeslots has been in English as scheduled. Tonight (18th September) I caught a fairly clear ID which I heard, with a split second interruption, as Voice of [.....]ia. It is understood that reception reports may be sent by email to <vom_en@yahoo.com> or, if you fancy sending a snail mail, the address is:
Voice of Mongolia, English Section, C.P.O.-Box 365, Ulaanbaatar-13, Mongolia
(Dave Harries, Bristol, England, Sept 18, dxldyg via WOR 1740, DXLD)

MOROCCO - 9575, R. Medi Un, Sep 18 0730-0745, 35433, French, Theme music at 0730, News, ID at 0741.

9575, R. Medi Un, Sep 22 0641-0649, 45444, French, Theme music at 0641, Talk (Kouji Hashimoto, JAPAN, RX, IC-R75, NRD-525+RD-9830, NRD-515, NRD-345, Satellit 750, DE-1121; ANT, 130m Sloper Wire, 303WA, DXLD)

A regular guest in my rx ... often heard in the mornings, noted 9580 RA well to hear but no QRM. we

MYANMAR - Die Democratic Voice of Burma beendet Ende Oktober 2014 ihre Radiosendungen in Kachin, Karenni, Karen, Chin, Mon, Rakhine und Shanden, Minderheitensprachen Myanmars. Dies wurde auf den Mitarbeitenden bei einer online-Konferenz am 27. August mitgeteilt. Wie Burma News International berichtet, bedeute die zunehmende Pressevielfalt im Land einen massiven Einbruch in der Hörerschaft für Kurzwellensendungen. Wir senden unsere Nachrichten um 6.00 Uhr morgens und 9.00 Uhr abends, aber da wartet unser Publikum nicht mehr auf uns, zitiert BMI den DVB-Editor U Khin Maung Soe. Die internationalen Geldgeber haben vorgeschlagen, auf Fernsehberichte umzusteigen, aber das schaffen die Mitarbeiter, die an der thailändisch-burmesischen Grenze leben, weder technisch noch logistisch.

Aus dem Bericht bei <<http://www.bnionline.net>> geht nicht hervor, in welchem Umfang die Sendungen in Burmesisch erhalten bleiben. Wohl aber wird erwähnt, dass die Democratic Voice of Burma im Vergleich der vier Auslandssender die kleinste Kurzwellenhörerschaft habe. Es ist unklar, welche Sender damit gemeint sind. Möglicherweise bezieht man sich auf eine in Teilen veröffentlichte BBG-Gallup-Präsentation, die allerdings nur auf Voice of America, Radio Free Asia, BBC und Democratic Voice of Burma einging, obwohl aus ganz abgesehen von religiösen Anbietern in Burmesisch und zahlreichen Minderheitensprachen noch weitere Auslandsdienste für Myanmar gibt.

Die Democratic Voice of Burma (Hauptsitz früher Oslo, heute Chiang Mai, Thailand) begann im Juli 1992 mit Kurzwellensendungen in Burmesisch und ein Jahr später in den Sprachen diverser Volksgruppen. Die norwegische Regierung betrachtete die Einräumung von Sendezeit auf der norwegischen Kurzwellenstation seinerzeit als Signal an die burmesische Regierung und Opposition. Sie wollte die Nobelpreisträgerin (1991) Aung San Suu Kyi unterstützen, deren Bewegung die Wahlen 1990 zwar gewonnen hatte, die aber ab Juli 1989 unter Hausarrest gestellt die Regierung nie antreten konnte. Starthilfe kam auch von norwegischen Nichtregierungsorganisationen wie Worldview, das sich die Unterstützung von Trägern des Friedensnobelpreises zur Aufgabe gemacht hatte und auch die Stimme Tibets und Radio Kudirat für Nigeria unterstützt hat.

(<<http://www.bnionline.net/index.php/news/imna/17383-dvb-ends-radio-broadcasting.html>> , Dr. Hansjörg Biener)

PAKISTAN - Surprisingly broadcasts of Radio Pakistan on Sept. 15, scheduled:

0830-1105 on 15730 ISL 250 kW / 313 deg to WeEu Urdu, but off at 0857

0830-1105 on 17700 ISL 250 kW / 313 deg to WeEu Urdu, but off at 0857.

Again surprisingly transmissions of Radio Pakistan on Sept.17:

0500-0700 15730 ISL 250 kW / 282 deg to N&ME Urdu, no signal 0600-0700

0500-0700 17810 ISL 250 kW / 282 deg to N&ME Urdu, no signal 0600-0700

0830-1100 15730 ISL 250 kW / 313 deg to WEu Urdu, with several breaks

0830-1100 17700 ISL 250 kW / 313 deg to WEu Urdu, with several breaks

1100-1110 15730 ISL 250 kW / 313 deg to WEu English news,ex 1100-1105

1100-1110 17700 ISL 250 kW / 313 deg to WEu English news,ex 1100-1105

(Ivo Ivanov)

PAPUA NEW GUINEA - 3385, NBC East New Britain, Rabaul. Had been off the air since Aug 29, the day of the eruption of the Tavurvur volcano. Sept 22 at 1118 with religious indigenous singing; 1125-1127 spot with American preacher (attached audio); as usual many ads in both English and Pidgin; 1202 PNG bird call and into the news in English, but unreadable; by 1210 was very poor.

(Ron Howard, San Francisco at Ocean Beach, CA, E1 & CR-1, dxldyg via WOR 1740, DXLD)

3385, Sept 23 at 1118, R. East New Britain, Rabaul is back on the air, very poor but some talk audible; Ron Howard says this resumed Sept 22 when he heard it at exactly the same hour. Also VP carrier here on 3260 which would be Madang. (Glenn Hauser, OK, WOR 1740, DXLD)

ROMANIA - RRI Bucharest B-14 from Oct 26:

7315	0000	0100	12NE	GAL	300	280	1234567	Spa	ROU
7325	0000	0100	14	TIG	300	247	1234567	Spa	ROU
9525	0000	0100	12NE	GAL	300	280	1234567	Spa	ROU
9730	0000	0100	14	TIG	300	247	1234567	Spa	ROU
6145	0100	0200	8	GAL	300	310	1234567	Eng	ROU
7325	0100	0200	8	GAL	300	310	1234567	Eng	ROU
5910	0100	0300	8	TIG	300	307	1234567	Ron	ROU
7340	0100	0300	8	TIG	300	307	1234567	Ron	ROU
5975	0200	0300	4, 8	GAL	300	310	1234567	Fra	ROU
7395	0200	0300	4, 8	GAL	300	310	1234567	Fra	ROU
7345	0300	0400	10	GAL	300	310	1234567	Spa	ROU
9470	0300	0400	10	GAL	300	310	1234567	Spa	ROU
9470	0300	0400	14	TIG	300	247	1234567	Spa	ROU
11800	0300	0400	14	TIG	300	247	1234567	Spa	ROU
6020	0400	0500	6	GAL	300	320	1234567	Eng	ROU
7340	0400	0500	6	GAL	300	337	1234567	Eng	ROU
13730	0400	0500	41	TIG	300	100	1234567	Eng	ROU
15140	0400	0500	41	TIG	300	97	1234567	Eng	ROU
15220	0500	0530	43, 44	TIG	300	67	1234567	Zho	ROU
17870	0500	0530	43, 44	TIG	300	67	1234567	Zho	ROU
6145	0500	0600	27SE	GAL	300	285	1234567	Ron	ROU
7220	0500	0600	27SE	GAL	300	285	1234567	Ron	ROU
5940	0530	0600	29	TIG	300	37	1234567	Rus	ROU
7320	0530	0600	29	TIG	300	37	1234567	Rus	ROU
7360	0600	0630	27SE	GAL	300	285	1234567	Fra	ROU
9650	0600	0630	27SE	GAL	300	285	1234567	Fra	ROU
11790	0600	0630	46	TIG	300	217	1234567	Fra	ROU
13740	0600	0630	46	TIG	300	217	1234567	Fra	ROU
7345	0630	0700	27N	TIG	300	307	1234567	Eng	ROU
9600	0630	0700	27N	GAL	300	300	1234567	Eng	ROU
17780	0630	0700	55, 58, 59	GAL	300	100	1234567	Eng	ROU
21600	0630	0700	55, 58, 59	TIG	300	97	1234567	Eng	ROU
6020	0700	0730	28NW	TIG	300	307	1234567	Deu	ROU
7345	0700	0730	28NW	TIG	300	307	1234567	Deu	ROU
11660	0730	0800	37	GAL	300	247	1234567	Ara	ROU
15200	0730	0800	37	GAL	300	245	1234567	Ara	ROU
15330	0730	0800	39NW	TIG	300	142	1234567	Ara	ROU
17810	0730	0800	39NW	TIG	300	142	1234567	Ara	ROU
15370	0800	0900	39NW	TIG	300	142	7	Mu1	ROU
15430	0800	0900	40W	GAL	300	110	7	Mu1	ROU
17850	0800	0900	40W	GAL	300	110	7	Mu1	ROU
17860	0800	0900	39NW	TIG	300	142	7	Mu1	ROU
15380	0900	1000	38E	GAL	300	175	7	Mu1	ROU
15430	0900	1000	39S	TIG	300	142	7	Mu1	ROU
17745	0900	1000	38E	GAL	300	175	7	Mu1	ROU
17775	0900	1000	39S	TIG	300	142	7	Mu1	ROU
15170	1000	1100	37	TIG	300	247	7	Mu1	ROU
15260	1000	1100	27SE	GAL	300	285	7	Fra	ROU
17780	1000	1100	37	TIG	300	247	7	Mu1	ROU
17870	1000	1100	27SE	GAL	300	285	7	Fra	ROU
15150	1100	1200	27SE	TIG	300	292	1234567	Fra	ROU
15255	1100	1200	27SE	GAL	300	285	1234567	Fra	ROU
17820	1100	1200	27SE	GAL	300	285	1234567	Fra	ROU
17870	1100	1200	37	TIG	300	247	1234567	Fra	ROU
15460	1200	1300	27N	GAL	300	307	1234567	Eng	ROU
17530	1200	1300	27N	TIG	300	307	1234567	Eng	ROU
17765	1200	1300	48	GAL	300	165	1234567	Eng	ROU
21520	1200	1300	48	TIG	300	157	1234567	Eng	ROU
15400	1300	1330	37	TIG	300	247	1234567	Ara	ROU
17810	1300	1330	37	TIG	300	247	1234567	Ara	ROU
9810	1300	1400	28NW	TIG	300	307	1234567	Deu	ROU
9880	1300	1400	28N	TIG	100	300	1234567	Ron	ROU
11665	1300	1400	28NW	TIG	300	307	1234567	Deu	ROU
15170	1300	1500	27SE	GAL	300	290	1234567	Ron	ROU
17840	1300	1500	27SE	GAL	300	285	1234567	Ron	ROU
11880	1330	1400	43, 44	TIG	300	67	1234567	Zho	ROU

13660	1330	1400	43,44	TIG	300	67	1234567	Zho	ROU
11830	1400	1430	43,44	TIG	300	67	1234567	Zho	ROU
15160	1400	1430	43,44	TIG	300	67	1234567	Zho	ROU
11985	1400	1500	31S	TIG	300	52	1234567	Rus	ROU
13860	1400	1500	31S	TIG	300	52	1234567	Rus	ROU
6040	1500	1530	28SW	TIG	100	270	1234567	Ita	ROU
5960	1500	1600	28NW	TIG	300	307	1234567	Deu	ROU
7330	1500	1600	28NW	TIG	300	307	1234567	Deu	ROU
9655	1500	1600	39NW	TIG	300	142	1234567	Ara	ROU
11610	1500	1600	39NW	TIG	300	142	1234567	Ara	ROU
15300	1500	1600	37	TIG	300	247	1234567	Ara	ROU
17550	1500	1600	37	TIG	300	247	1234567	Ara	ROU
6040	1530	1600	28SE	TIG	100	210	1234567	Rup	ROU
5955	1600	1630	29SW	TIG	100	30	1234567	Ukr	ROU
5930	1600	1700	29	TIG	300	37	1234567	Rus	ROU
9655	1600	1700	27SE	GAL	300	290	1234567	Ron	ROU
9810	1600	1700	29	TIG	300	37	1234567	Rus	ROU
11870	1600	1700	27SE	GAL	300	285	1234567	Ron	ROU
5955	1630	1700	28SW	TIG	100	270	1234567	Srp	ROU
9680	1630	1700	39NW	TIG	300	142	1234567	Ara	ROU
11760	1630	1700	39NW	TIG	300	142	1234567	Ara	ROU
5955	1700	1730	28SW	TIG	100	270	1234567	Ita	ROU
5920	1700	1800	39NW	GAL	300	140	1234567	Ron	ROU
7370	1700	1800	39NW	GAL	300	140	1234567	Ron	ROU
7400	1700	1800	27SE	TIG	300	292	1234567	Fra	ROU
9690	1700	1800	27SE	TIG	300	292	1234567	Fra	ROU
5955	1730	1800	28SE	TIG	100	210	1234567	Rup	ROU
6090	1800	1830	29SW	TIG	100	30	1234567	Ukr	ROU
5940	1800	1900	27N	TIG	300	307	1234567	Eng	ROU
7350	1800	1900	27SE	GAL	300	285	1234567	Fra	ROU
9780	1800	1900	27N	TIG	300	307	1234567	Eng	ROU
5990	1800	2100	27SE	GAL	300	285	1234567	Ron	ROU
6180	1830	1900	28SW	TIG	100	270	1234567	Srp	ROU
5945	1900	1930	28SW	TIG	100	270	1234567	Ita	ROU
6010	1900	2000	28NW	TIG	300	307	1234567	Deu	ROU
7405	1900	2000	28NW	TIG	300	307	1234567	Deu	ROU
7430	1900	2000	27SE	GAL	300	285	1234567	Ron	ROU
5945	1930	2000	28SE	TIG	100	210	1234567	Rup	ROU
6030	2000	2030	29SW	TIG	100	30	1234567	Ukr	ROU
6010	2000	2100	37NW	TIG	300	277	1234567	Spa	ROU
7235	2000	2100	27S	TIG	300	277	1234567	Spa	ROU
7430	2000	2100	27SE	GAL	300	285	1234567	Fra	ROU
6030	2030	2100	28SW	TIG	100	270	1234567	Srp	ROU
6030	2100	2130	27SE	GAL	300	285	1234567	Fra	ROU
7370	2100	2130	27SE	GAL	300	285	1234567	Fra	ROU
6030	2130	2200	27N	GAL	300	300	1234567	Eng	ROU
6170	2130	2200	8	TIG	300	307	1234567	Eng	ROU
7310	2130	2200	8	TIG	300	307	1234567	Eng	ROU
7380	2130	2200	27N	GAL	300	290	1234567	Eng	ROU
9790	2200	2300	14	TIG	300	247	1234567	Spa	ROU
11870	2200	2300	14	TIG	300	247	1234567	Spa	ROU
6015	2300	2400	27N	GAL	300	285	1234567	Eng	ROU
7220	2300	2400	27N	GAL	300	290	1234567	Eng	ROU
7395	2300	2400	45	TIG	300	52	1234567	Eng	ROU
9620	2300	2400	45	TIG	300	52	1234567	Eng	ROU

(wb 15 Sept)

RUSSIA [non] - Frequency change of Radio Liberty in Russian:

0300-0400 6105 LAM 100 kW / 055 deg EEu, ex 9635 // 7435 BIB 17770 PHT
 0400-0500 9635 LAM 100 kW / 055 deg EEu unchanged // 7435 BIB 11850 LAM
 0500-0700 9635 LAM 100 kW / 055 deg EEu unchanged // 11850 LAM 17770 KWT

Frequency change of Radio Liberty in Avari/Chechen/Chercassian:

0300-0400 NF 7290 LAM 100 kW / 092 deg to CeAs, ex 11850 from Sept. 15 // 9740 BIB
 (DX MIX NEWS #872 from Georgi Bancov and Ivo Ivanov. Sept. 23, 2014)

RWANDA - 6055, 09/16 0303, R. Rwanda, Kigali, in Kinyarwanda lang. ; regional music, fv. talks, good signal and poor modulation, 45432.

6055, 09/17 0410, R. Rwanda, Kigali, in Kinyarwanda; fv/mv, talks, news and cms. presumed; music, 45433.
(JRX_Jose Ronaldo Xavier, Cabedelo, Paraíba, Brazil, Hard-Core-DX mailing list via DXLD)

13660, Sunday Sept 14 until 1315*, tune-in to last few notes of Babcock music loop IS and off; Aoki explains it's the Afar service of TWR via Kigali at 1300-1315 Thu/Fr/Sa/Su only. (gh, DXLD)

SARAWAK(non) - New frequencies of Radio Free Sarawak was observed on Oct.11:

1100-1130 NF 15425 PUG 125 kW / 222 deg to SEAs Iban Mo-Sa + jamming

1130-1200 NF 15460 PUG 125 kW / 222 deg to SEAs Iban Mo-Sa + jamming

1200-1230 NF 15430 PUG 125 kW / 222 deg to SEAs Iban Mo-Sa + jamming

Cancelled from Oct.7:

1100-1145 on 15430 PUG 125 kW / 222 deg to SEAs Iban Mo-Sa

1145-1230 on 15420 PUG 125 kW / 222 deg to SEAs Iban Mo-Sa

(DX RE MIX NEWS # 874)

SAUDI ARABIA - AMPEGON DELIVERS SHORTWAVE TRANSMITTERS AND ANTENNA SYSTEMS TO SAUDI BROADCAST CORPORATION

Turgi, Switzerland, September 12, 2014. Saudi Broadcast Corporation (SBC), Saudi's National Broadcaster, has contracted Ampegon through undisputed Saudi market leader First Gulf Company (FGC) for the renewal of their radio transmission site in Riyadh. Ampegon will deliver four 500 kW shortwave transmitters, four shortwave antennas HRS 4/4/0.5 and the BroadMaster broadcast control system. The new systems will replace existing analog transmitters with four tubes by modern analog/digital transmitters having single high power tube amplification and hence a much better overall efficiency. Saudi Broadcast Corporation has selected FGC proposal with Ampegon because of the capability of FGC to handle large projects along with Ampegon's expertise and the reliability of their systems well known since decades. Ampegon had supplied several antenna and transmission systems in the past and feels honored to once again show presence in Saudi Arabia.

The transmitters will be manufactured in Turgi, Switzerland. Factory tests together with SBC engineers are planned for autumn and shipments before end of 2014. Commissioning by an Ampegon engineer will start afterwards and the new systems are expected to be on air within summer 2015.

<info@ampegon.com> --- (via Alokesh Gupta, New Delhi, Sept 12, WORLD OF RADIO 1739, DXLD)

SOLOMON ISLANDS - 5020, SIBC, Sep 07 0835-0851, 35433-45433, Pidgin, Music and talk, ID at 0837.

(Kouji Hashimoto, JAPAN, RX, IC-R75, NRD-525+RD-9830, NRD-515, NRD-345, Satellit 750, DE-1121; ANT, 130m SloperWire, 303WA, DXLD)

9545, SIBC, 0845-0857 long list of messages by studio W DJ in Tok Pisin w/many ments of studio, transport and Thank you for your cooperation and understanding, and a couple ments of SIBC. So obviously a lot of late shipments. Ended at 0857 with promo, then live W again with program notes including a nice ID with frequencies at 0858 and mention of Bible reading [sic], sports, and news, then said Bible Reading. Good signal at tune/in but faded by 0938 check. Getting some splash QRM from the 9540 CNR1 jammer at 1015 check. Nothing on usual frequency of 5020. (17 Sept.)

(Dave Valko, Dunlo, PA USA, Perseus SDR, 153 foot Delta Loop, Hard-Core-DX mailing list via DXLD)

SOMALILAND [and non] - 7120.0, Sept 15 at 0327, R. Hargeisa carrier is right on-frequency, but with more or less continuous LSB QRhAM in Spanish, also right on 7120.0 with RH as BFO; as amateurs are totally entitled to do not only in the Western Hemisphere, but everywhere now with RH the intruder. 0329 add some CW QRhAM, from CO8RR calling CQ a few times; OC lasts until 0331:30 NA starts; 0332:30 Somali sign-on; 0333 Qur'an; 0337 talk; initially fair signal gradually fades, but still in, to very poor level at 0355. Not really rare with 100 kW, but still exotic, and I haven't heard it in a long time since I habitually seldom monitor at this hour. Too bad there's no English now, but presumably still at 1320-1340v, when only in deep winter do we have a remote chance of hearing that in deep North America.

BTW, the times are wrong for this in WRTH 2014: says signs on at 0300, but it's been 0330v as long as I can remember; says SW sign-off is at 1830, but Kouji Hashimoto in Japan has tracked it almost daily for many months varying slightly around 1900* except later in Ramadan. Also claims English news is at 1300, and 1930 (after SW closes, MW and FM only then) (gh, DXLD)

SPAIN - On REE's Listener's Club program at 0005 September 12 the long-expected news was delivered: All REE SW will end on October 15. A revamped REE English presence on the Internet will continue with podcasts, as well as a live stream six days a week at 0000. Alison Hughes did say that they hope to improve the website experience with a more user-friendly format.

This will leave Albania and Romania as the only European public broadcasters with English to North America. Anyone care to guess which one of those will be next to pull the plug? I'm guessing Romania.
(Steve Luce, Houston, Texas, dxldyg via WOR 1739, DXLD)

SRI LANKA - PCJ Radio - Song of India, also on SW Oct 5 at 0000-0200 UT.

The broadcast will go to audiences in North America and Europe Saturday October 4th Night (8pm to 10pm Eastern ST) from WRMI Okichobee on 7570 kHz which is UT Oct 5 from 0000 to 0200 UT. This frequency should get into Europe pretty well and come all the way to South Asia too with a little luck. E-mail: <pcjqs@pcjmedia.com>
(Oct 3, Victor Goonetilleke PCJ Frequency Manager)

Sorry, information was too late to react ... wonder if they had any European audience ... we

TURKEY - Additional / wrong frequency of Voice of Turkey in German & English:

1730-1825 on 5960 EMR 500 kW / 150 deg to N/ME German, instead of Turkish
1730-1825 on 11835 EMR 500 kW / 310 deg to WeEu German as scheduled in A14

1830-1916 on 5960 EMR 500 kW / 150 deg to N/ME English, instead of Turkish
1830-1925 on 9785 EMR 500 kW / 310 deg to WeEu English as scheduled in A14

from 1916 on 5960 EMR 500 kW / 150 deg to N/ME Turkish as scheduled in A14
// frequency 9460 EMR 500 kW / 310 deg to WeEu Turkish as scheduled in A14
(DX RE MIX NEWS # 874)

UKRAINE [U.S.A.] - WRMI to Begin Relay of Radio Ukraine International

Shortwave station WRMI in Okeechobee, Florida will begin a daily relay transmission of the English-language program of Radio Ukraine International on Thursday, September 25, 2014 on the frequency of 11580 kHz from 2330 to 0000 UT. This transmission will be directed primarily to eastern North America, although it will likely be audible in Europe as well.

We are pleased to be able to provide this service to shortwave listeners at a time when much of the world's focus is on the situation in the Ukraine, said Jeff White, WRMI General Manager. The broadcasts will continue at least through the end of 2014. Listener reports and comments are welcome at <info@wrmi.net> or to WRMI Radio Miami International, 10400 NW 240th Street, Okeechobee, Florida 34972, USA
Tel +1-305-559-9764 - Fax +1-863-467-0185 - <<http://www.wrmi.net>>
(NEWS RELEASE - September 23, 2014, via WOR 1740, DXLD)

UNITED KINGDOM [non] - BBCWS to West Africa --- BBC World Service is launching special Ebola broadcasts for West Africa, starting today (22 September). A press release at <<http://www.bbc.co.uk/mediacentre/latestnews/2014/ebola-radio-network>> says the broadcasts will be daily at 1950 but doesn't mention any frequencies. Separately, I have been told that they are 9915 and 12095. Both of these are already due to be on to West Africa at 2000-2200, so it would seem that they will come up 10 minutes early for these special programmes. But that raises the issue of what will happen on 13660 and 15400, which are scheduled to close at 2000.
(Chris Greenway, dxldyg via DXLD)

BBC changes effective Sept. 20/22:

0700-0730	17880	WOF	300 kW	/	152 deg	CAf	French, ex RSA	250kW/342deg
1300-1400	17830	RSA	250 kW	/	032 deg	EAF	Somali Sat Premier League	
1300-1400	21470	UAE	250 kW	/	205 deg	EAF	Somali Sat Premier League	
1330-1600	17780	ASC	250 kW	/	065 deg	WAF	Hausa Sat Premier League	
1100-1200	17755	WOF	100 kW	/	107 deg	N/ME	English Sept. 24 DRM mode	
1400-1500	17830	RSA	250 kW	/	032 deg	EAF	Somali Sat Premier League	
1400-1500	21470	UAE	250 kW	/	225 deg	EAF	Somali Sat Premier League	
1600-1700	6195	UZB	100 kW	/	236 deg	WAs	Farsi, ex 1500-1600 same	
1600-1700	15310	TH	250 kW	/	300 deg	WAs	Farsi, ex 1500-1600 same	
2200-2400	9915	ASC	250 kW	/	065 deg	WCAf	English Mon-Fri, additional	
2200-2400	12095	ASC	250 kW	/	027 deg	WAF	English Mon-Fri, additional	

(Ivo Ivanov-BUL, via wwdxc BC-DX TopNews Sept 23)

Good signals into Houston of the expanded BBCWS transmissions via Ascension on 9915 and 12095 between 2300 and 2330 UT September 23. Earlier darkness this time of year helps (Houston sunset 0018.) Nice to have this early evening option, but I suspect the additional hours will be dropped if/when the Ebola epidemic subsides, which would be a good thing. (Stephen Luce, Houston, Texas)

Someone has not told Kranji about the longer transmissions to West Africa on 12095. Bow Bells interval signal played from Kranji over the last 3-4 minutes of the programme on 12095 from Ascension. (Stephen Cooper, England)

U.S.A.: - Cancelled transmissions of WRMI via tx #14 effective from Oct. 1:
5950 YFR 100 kW / 181 deg to CARR [sic; Caribbean]

0100-0130 Spanish Mon Trova Libre
0130-0200 English Mon Anglparade
0100-0200 Spanish Tue La Rosa de Tokio
0100-0200 Musique Wed RFI Musique
0100-0130 Musique Thu RFI Musique
0130-0145 Spanish Thu Viva Miami
0145-0200 Spanish Thu Acon Venez
0100-0130 Spanish Fri Frecuencia al Dia
0130-0200 Spanish Fri Historias de Radio
0100-0130 Spanish Sat Antena DX
0130-0200 English Sat Blues Radio International
0100-0130 English Sun World of Radio
0130-0200 English Sun Wavescan
(Ivo Ivanov, Sofia, Bulgaria, dxldyg via DXLD)

WRMI to Expand Family Radio Broadcasts

As of UTC October 1, WRMI in Okeechobee, Florida is to add three hours per day of programming from Family Radio in Asian languages. This is in addition to the two hours per day of Spanish-language programming from Family Radio that WRMI already broadcasts. The new broadcasts will be in Chinese, Japanese and Hindi.

This will be a short-term experiment, explained WRMI General Manager Jeff White. But if results are good, it could be extended. The idea is to see how well these broadcasts can be received by listeners in China, Japan and India. These are very distant target areas from Okeechobee, but recent listener reports indicate that our signal is audible in much of Asia at certain times and frequencies. If that is confirmed, we may be able to begin broadcasts of other programs to these Asian audiences.

The schedule for the Family Radio broadcasts via WRMI as of UT October 1, 2014 is as follows:

1000-1100 UTC daily on 7570 kHz in Japanese
1100-1200 UTC daily on 7570 kHz in Chinese
2300-0000 UTC daily on 5950 kHz in Spanish
0000-0100 UTC daily on 5950 kHz in Spanish
0100-0200 UTC daily on 15770 kHz in Hindi

The Japanese- and Chinese-language programs are on a beam to western North America, but will also be intended for listeners in Japan and China. The Hindi-language program is on a beam to Europe and the Middle East, but will also be intended for listeners in India. The two Spanish-language hours are two different programs.

Reports for the new Japanese, Chinese and Hindi programs will be greatly appreciated, especially from listeners in Asia. They may be sent to <info@wrmi.net> or to:
WRMI Radio Miami International, 10400 NW 240th Street, Okeechobee, Florida 34972, USA.
<<http://www.wrmi.net>> (Jeff White-FL-USA, WRMI Sept 24)

Cancelled transmissions of WRMI via tx #14 effective from Oct. 1:
5950 YFR 100 kW / 181 deg to CARR [sic; Caribbean]

0100-0130 Spanish Mon Trova Libre
0130-0200 English Mon Anglparade
0100-0200 Spanish Tue La Rosa de Tokio
0100-0200 Musique Wed RFI Musique
0100-0130 Musique Thu RFI Musique
0130-0145 Spanish Thu Viva Miami
0145-0200 Spanish Thu Acon Venez
0100-0130 Spanish Fri Frecuencia al Dia
0130-0200 Spanish Fri Historias de Radio
0100-0130 Spanish Sat Antena DX
0130-0200 English Sat Blues Radio International
0100-0130 English Sun World of Radio
0130-0200 English Sun Wavescan
(Ivo Ivanov, Sofia, Bulgaria, dxldyg via DXLD)

Changes of Brother Stair TOM in English via WRMI Okeechobee:

0100-0400 on 5985 YFR 100 kW / 222 deg to MEXI additional 3 hours
0100-0200 on 15770 YFR 100 kW / 044 deg to WeEu deleted, now Family Radio Hindi
1000-1100 on 7570 YFR 100 kW / 315 deg to WNA deleted, now Family Radio Japanese

1100-1200 on 7570 YFR 100 kW / 315 deg to WNA deleted, now Family Radio Chinese

From Sept.29 no more broadcasts of Brother Stair via World Harvest Radio:

0600-0800 on 7365 HRI 250 kW / 047 deg to WeEu via WHRI Angel 2

1000-1200 on 11565 HRI 250 kW / 245 deg to AUS via WHRI Angel 1

1800-2100 on 21600 HRI 250 kW / 085 deg to CeAf via WHRI Angel 1 Mon-Fri

New transmissions of World Harvest Radio-Water of Life Ministries

1400-1430 on 9930 HBN 100 kW / 345 deg to NEAs English Sun via T8WH Angel 5

1430-1500 on 9930 HBN 100 kW / 318 deg to EAs English Sun via T8WH Angel 3

(DX RE MIX NEWS # 874)

U.S.A. [non] - Radio Free Asia in Vietnamese was back Oct.1:

1400-1500 on 9950 TIN 250 kW / 270 deg to SEAs

1400-1500 on 12045 SAI 100 kW / 270 deg to SEAs

2330-0030 on 9940 TIN 250 kW / 270 deg to SEAs

(DX RE MIX NEWS # 874)

Frequency changes of IBB: Radio Liberty:

0300-0700 NF 6105 LAM 100 kW / 055 deg to EaEu Russian, ex 9635, but not yet

Voice of America:

0500-0600 on 11995 VAT 250 kW / 114 deg to WAs Kurdish, cancelled

0500-0600 on 15560 IRA 250 kW / 310 deg to WAs Kurdish, cancelled

0500-0600 on 17870 BIB 100 kW / 085 deg to WAs Kurdish, cancelled

1700-1800 NF 7215 BIB 100 kW / 105 deg to WAs Kurdish, ex 7365.

1900-1930 NF 9590 STP 100 kW / 052 deg to Sudan Arabic Afia Darfur, ex

1900-2000 on 6170 BIB 100 kW / 105 deg to WAs Kurdish, new transmission

1900-2000 on 7220 LAM 100 kW / 108 deg to WAs Kurdish, new transmission

1900-2000 on 9470 LAM 100 kW / 105 deg to WAs Kurdish, new transmission.

1900-2100 NF 7470 PHT 250 kW / 021 deg to EAs Korean, ex 5915, re-ex 5900

Radio Free Asia:

2200-2300 NF 15260 TIN 250 kW / 280 deg EAs Cantonese Mon, ex 15120

2200-2300 NF 15270 TIN 250 kW / 280 deg EAs Cantonese Tue, ex 15120

2200-2300 NF 15280 TIN 250 kW / 280 deg EAs Cantonese Wed, ex 15120

2200-2300 NF 15290 TIN 250 kW / 280 deg EAs Cantonese Thu, ex 15120

2200-2300 NF 15300 TIN 250 kW / 280 deg EAs Cantonese Fri, ex 15120

2200-2300 NF 15380 TIN 250 kW / 280 deg EAs Cantonese Sat, ex 15120

2200-2300 NF 15390 TIN 250 kW / 280 deg EAs Cantonese Sun, ex 15120

(DX MIX NEWS #871 from Georgi Bancov and Ivo Ivanov, Sept 16)

concerned these RFA-broadcasts:

<http://www.rhci-online.de/VoA_Radiogram_2014-09-13.htm>

The test broadcasts have been ended and will not be continued.

Kim Andrew Elliott wrote about this subject:

.....The *Radio Free Asia* transmissions of digital text via shortwave have ended and will not resume. I am surprised by this decision, because the RFA tests showed that in even in the face of deliberate Chinese co-channel interference, digital text provided a very successful decode.

Here is an example: RFA Cantonese as received in Hong Kong, 14 September 2014, 2257 UTC, on 15390 kHz. The female voice is China National Radio. The male voice in the background in RFA Cantonese. The mix of CNR and RFA creates a generally inaudible mess. The Olivia 32-2000 mode penetrates the cacophony, resulting in successfully decoded text (try decoding it yourself)...

<<https://soundcloud.com/voaradiogram/rfa-cant-140914-2257-15390-hk>>

I initiated experiments with digital text via analog shortwave broadcast about two years ago to find a way to work around the blockage and censorship of Internet content. The VOA Radiogram experiments show that text and images can successfully be transmitted via shortwave: a useful capability when the Internet is blocked.

However, we can assume that if a country blocks Internet traffic, it will probably also jam shortwave transmissions. Text via shortwave must also have anti-jamming capabilities. Tests of digital text modes amid actual jamming are -- were -- essential to the VOA Radiogram concept. Now that VOA and RFA have both discontinued tests of text to China,

experiments with Chinese jamming are no longer possible within the realm of US-government-funded international broadcasting

Editor's info desk was closed for this edition on October 12th, 2014, at High Noon.

We got only rare infos on the schedules for the next saison – sorry.

Lists of broadcasts in German will be updated in the first week of the new season, English at least one week later.

Sources & Contributors:

A-DX - e-mail exchange - Austria.

Alokesh Gupta - New Delhi - India.

BCDX - News Bulletin by Wolfgang W. Bueschel (wb) - Stuttgart - Germany.

CONEXION - CONEXION Digital - Buenos Aires - Argentina.

DXLD - Glenn Hauser's DX LISTENING DIGEST - USA.

Dr. Hans-Jörg Biener (hjb) - Nuremberg, Germany.

DX MIX NEWS = DX RE MIX NEWS - from Georgi Bancov & Ivo Ivanov, Bulgaria.

Others as stated in contribution.

Any items from Glenn Hauser, DX LISTENING DIGEST, and/or World of Radio may be reproduced or broadcast only if full credit be maintained at all stages, from the original source through DXLD, and publications quoting are made available to gh in exchange.

Items from this file may be reproduced or re-reproduced only if full credit is maintained at all stages.

Abbreviations: (see *DX MAGAZINE 8-9/2014*)

Editor:

Walter Eibl (we), P.O. Box 1545, 91005 Erlangen, Germany.

E-Mail: <we@wwdxc.de> or <we@kwrs.de>

Used equipment:

Receiver: Communications receiver ICOM IC-R70 (no modification)

Antenna: Hamtronic HT504 selective active antenna, in roof window ca. 15 m above ground

Location: Herzogenaurach / Germany; 49.567/10.917; 310 m NN

History & Background

UKRAINE

Mykolaiv high power transmissions by Rick Slobodian (Canada) from data collected while I was in Lviv at the Krasne Transmitter site in August 1998:

In the 70's from the Mykolaiv (Luch) transmitter site in Ukraine, experiments were performed using three 1000 kW transmitters in parallel. The antenna consisted of 13 vertical towers in the shape of a parabola (as viewed from an airplane), it also had a very narrow bandwidth (ca. 3 MHz), and a very narrow beamwidth (approx. 5-10 degrees). The result of this was the gain

they obtained from this antenna was a staggering 38 dB! The reference signal they used it against was a 1000 kW transmitter with a 20 dB curtain antenna. The test signal was directed to the Washington/New York area.

What happened was as follows; transmitter output power started at 1000 kW and they increased power and monitored received signal strength in Washington. As the test transmitter power approached 2000 kW, they found that the received signal strength started to decrease. At 3000 kW the received signal was almost gone, but why?

Radio Ionosonde sounders and satellites were then dispatched to analyse the signal. What they found was surprising. At 3000 kW and 38 dB of antenna gain the signal was of such power that it was heating up a spot in the ionosphere but instead of creating a solid area of reflection they discovered they were actually burning a hole in the ionosphere and the signal was being shot off into space. They also noticed that in the area of the ionospheric hole had an effect on approaching weather fronts. The weather fronts were being deflected around the ionospheric heated area, an inadvertent weather modification.



So they reduced the power, received signal strength improved, but not much over the reference signal. They experienced lots of fading especially when the ionosphere was unstable, that the solar winds would push & pull at this heated up areas of the ionosphere and moved it around. They did however notice that as the ionospheric hole decreased in size, they were also able to transmit a second signal beamed to the same spot at much higher than the MUF and HPF, however the received signal was very unstable, because of the lack of symmetry and alignment due to the number of hops. This method has been used before, but just for one hop.

The parabolic antenna was modified to a wider beamwidth (approximately 30 degrees) and the frequency range was expanded to 5.5-22.0 MHz. The result of this was a drop in gain to 29 dB, which is still fantastic. The high power transmission program was cancelled, and soon after many of the engineers were laid off, but approximately 20-30 were provided safe passage out of the Ukrainian SSR and ended up in Alaska working on the US HAARP project.

(via [shortwavesites](#) yg via [DXLD](#))

Shortwave Transmitter Plant Wertachtal - End of an Era



In July 2014 it was reported in the Augsburg Allgemeine newspaper that the transmission plant Wertachtal will be dismantled soon. The dismantling should be implemented in September 2014 onwards. After the transmissions from Wertachtal had already been terminated in 2013, the masts and else technical equipment will disappear from the landscape now. I went to Wertachtal myself in mid-August since my hometown is only a half hour car drive away, to take a look once again at the masts, antennas and transmission buildings.

(formerly Deutsche Bundespost). The transmitters and more than 85% of the antenna systems are located in the municipality of Amberg, the remaining parts in the community Langerringen in the valley of Wertach (Allgäu area, South Western part of Bavaria. ed). From the neighboring communities Ettringen/Wertach and Lamerdingen you have a good view to the transmitters, too, as well as from the South as from a site near motorway A96. The plant has been operating since 1972. Since May 2013 the transmitters in Wertachtal have been silent.

The shortwave transmitter plant Wertachtal was a big broadcasting center for programmes via shortwaves, which was run by Media Broadcast



The transmitter plant in Wertachtal consisted of 14 transmitters with 500 kW of power and two transmitters with 100 kW of power. Accordingly, the antenna system has considerably large series of towers, the tallest with up to 125 meters height keep the cable networks for the antennas. The three star-shaped antenna roads have 1 km, 1.3 km and 1.9 km in length.

History

Due to the Olympic Games in Munich in 1972, it was decided to build an additional shortwave transmitter plant in Wertachtal, since the nine 100 kW transmitters installed in Jülich were not sufficient enough. Originally, the transmission center should be built in the upper Illertal, but there were complications with land purchases in that area. Later on, they found a site with

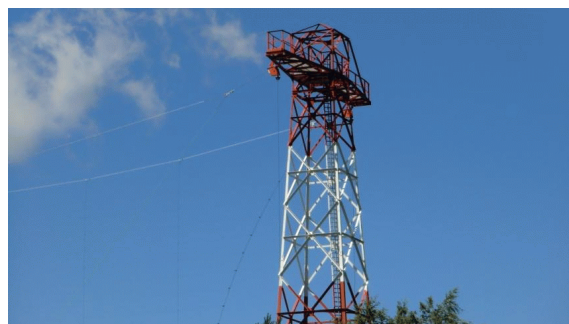


200 hectares further east in Wertachtal and bought this lot. The construction of the transmission system in Wertachtal began in 1969. The transmitters were ordered from AEG-Telefunken and the antennas from Brown, Boveri & Cie. On November 17, 1970, the topping-out ceremony of the then largest shortwave transmitter center in Europe was celebrated. About 600 workers were involved in the construction. In September 1971 six of 25 transmission towers were completed, reaching a height of up to 125 meters. These should be equipped with curtain antennas for broadcasts to North America and the Middle East. In the same year also the first three shortwave transmitters of AEG-Telefunken had been installed and broadcasting was planned to start in December 1971. Till

the 1972 Olympic Games four 500 kW shortwave transmitters should be installed and one stand-by transmitter as a backup transmitter.

The first experimental broadcasts of the shortwave station in Wertachtal began in April 10, 1972, for which the 500 kW transmitters were used. The test transmissions ended with the start of the Olympic Games in summer 1972. Afterwards one of the four stations was broadcasting the "ARD-Olympiawelle" on a frequency of 5995 kHz, while the other three were used for broadcasts of foreign language programmes.

After the Olympics, the transmission system was used by Deutsche Welle. Until 1982, ten more 500 kW shortwave transmitter have been put into service. Till the end of the 80s six additional 500 kW shortwave transmitters followed, which were also made by Telefunken. Other broadcasters started transmissions via Wertachtal since 1987, including Voice of America, Radio Canada International and Radio Nederland Wereldomroep. As Voice of America agreed to broadcast for an extended period from this location, one more curtain antenna was mounted and some logarithmic periodic antennas were dismantled. On 31 December 1995, however, Voice of America gave up their broadcasts from Wertachtal again. Therefore, Deutsche Welle decided to reduce their use of the shortwave station in Jülich and replaced these transmissions by broadcasts via the shortwave transmitters in Nauen and Wertachtal. For this purpose a new Quadrant antenna was built in Wertachtal for the coverage of Europe.



Regular customers of the transmitting station in Wertachtal included Adventist World Radio since 1996 and Family Radio since 2001.

In 2003, a new shortwave transmitter was installed in Wertachtal, a joint project of T-Systems, Telefunken Sendertechnik (now Transradio Sendersysteme Berlin) and RIZ Zagreb with a power of 500 kW in amplitude modulation and broadcasts in Digital Radio Mondiale with a power of 200 kW.

On 31 December 2006, Deutsche Welle ended its shortwave broadcasts from Wertachtal and moved its European broadcasts among others to the transmitting station Woofferton in the UK. (This was due to rising costs at Wertachtal and a discount offer from UK. ed)

Since 15 January 2008 the transmitter plant is belonging to Media Broadcasts.

During April 2013 all except the last four transmissions, primarily programmes of religious broadcasters, were shifted from Wertachtal to the transmitting station in Nauen, so that the latter is fully loaded with about 60 regular broadcasts nowadays. On 1 May 2013, the remaining broadcasts were also transferred to Nauen. However, the transmitter center Wertachtal remained operational. In 2014 there were rumours that the transmission plant Wertachtal should be completely dismantled as from May until the end of 2014. The newest transmitter, installed in 2003 by the Croatian company RIZ Zagreb, should be relocated to the transmission plant in Nauen and will be run there with the steerable antenna array installed in 1964. In effect, some equipment was taken over from the Austrian Broadcasting Services GmbH for its transmission plant in Moosbrunn. The other equipment will be scrapped, if no buyers can be found.

(Pictures and text by Thomas Schubaur, Germany, published in "qso" of adxb-DL - some parts of the text taken from <http://de.wikipedia.org/wiki/Kurzwellensendeanlage_Wertachtal> - English adaption by WWDXC)



DX LOGBOOK

Logs around the clock

by Ashok Kumar Bose, Unit # 28, 7035, Rexwood Road, Mississauga, ON, L4T 4M6, Canada
E-Mail: logbook@wwdxc.de

SHORTWAVE BANDS

Frequency	UTC	SIO	ITU	Radio Station	Language	Programme Details	Date	Rep.
3955.0	2100	343	G	KBS World Radio	English	Talks	1608	PH
4840.0	0203	443	USA	WWCR,Nashville	English	Praying about Jesus	1709	HS
5015.0	0225	343	USA	Brother Stair	English	Story about Stevens father	1709	HS
5050.0	0230	222	USA	WWRB Manchester	English	Spirit of Woman	1709	HS
5810.0	0243	252	USA	WEWN-EWTN	English	Catholic Radio,Song	1709	HS
5830.0	0245	343	USA	WTWW Lebanon	English	Lord Prayer	1709	HS
5890.0	0235	433	USA	WWRB Manchester	English	Spirit of Woman	1709	HS
5920.0	0250	555	USA	WHRI	English	Change my future	1709	HS
5935.0	0252	454	USA	WWCR Nashville	English	People in your life	1709	HS
5960.0	0254	353	KWT	Radio Kuwait	Arabic	Morning prayer Allah	1709	HS
5980.0	0256	343	AFS	Channel Africa	English	ID program in Afrikaans	1709	HS
6000.0	0258	454	CUB	Radio Habana	English	Piano music Maria Luisa	1709	HS
6020.0	0259	555	ALB	CRI relay	Mandarin	English ID Mandarin px.	1709	HS
6055.0	0301	232	RRW	Radio Rwanda	Kinya	Music, Anncts.	1709	HS
6060.0	0303	554	CUB	Radio Habana	Spanish	Cuban Rythme music	1709	HS
6080.0	0305	454	BOT	VOA relay	English	Magazine on Obama	1709	HS
6090.0	0307	343	AIA	Dr. Gene Scott , Anguilla	English	Religious program	1709	HS
6100.0	2100	444	SER	Radio Serbia	English	News	1608	PH
6125.0	0309	353	E	REE	Spanish	Magazine	1709	HS
6135.0	0311	555	CVA	Afia Darfur Radio	Arabic	Telephone talk	1709	HS
6165.0	0315	433	TUR	Voice of Turkey	English	Report 7 years war	1709	HS
6165.0	0332	322	CUB	Radio Habana	English	Rumba music	1709	HS
7315.0	1920	444	IRN	VOIRI	English	Spying	0509	PH
7430.0	2200	444	ROU	Rdaio Romania Intl.,	English	Radio Newsreel	1708	PH
7550.0	2000	444	IND	AIR	English	News	0908	PH
9390.0	2030	444	THA	Radio Thailand	English	Thai news	0208	PH
9440.0	2000	555	CHN	China Radio	English	Talks	1708	PH
9445.0	2135	555	IND	AIR	English	Film Factory India	1309	HS
9475.0	0000	444	USA	WTWW	English	Scripture's America Talks	1908	PH
9625.0	1800	444	AUT	Voice of Vietnam relay	English	News	1009	PH
9655.0	2100	232	RRW	Deutsche Welle	English	Talks on Africa	1408	PH
9710.0	0715	353	AUS	Radio Australia	English	Live Cricket	1409	HS
9715.0	2015	333	IRN	VOIRI	English	Talks	1408	PH
9785.0	1930	333	TUR	Voice of turkey	English	Sign off	0908	PH
9820.0	1900	333	AUS	Radio Australia	English	News	0409	PH
9850.0	0720	555	CVA	Radio Vatican	Ukranian	Songs,IS,Mass	1409	HS
11253.0	1300	454	G	RAF VOLMET	English	In SSB Airport weather	1409	HS
11565.0	1030	333	USA	WHRI	English	Religious program	0709	PH

11580.0	2125	453	USA	Brother Stair	English	Praying about God	1309	HS
11615.0	2000	232	E	REE	French	Talks	1009	PH
11645.0	1600	333	KRE	Voice of Korea	English	News, Songs	2907	PH
11660.0	2120	554	CHN	CRI	French	Balafon muisc, ID	1309	HS
11670.0	2115	544	IND	AIR	English	Guitar music	1309	HS
11695.0	2100	443	AUS	Radio Australia	English	News fron ABC	1309	HS
11725.0	0800	333	NZL	RNZI	English	News	0509	PH
11730.0	0100	333	USA	OCM	English	Brother Stair Talks	3007	PH
11735.0	2055	433	TZA	ZBC Radio	Swahili	African song	1309	HS
11740.0	2046	433	IND	All India Radio	English	Songs	1309	HS
11800.0	2043	443	RRW	Deutsche Welle	English	Cuba's interest USA	1309	HS
11810.0	2040	444	ASC	BBC	English	News magazine	1309	HS
11810.0	2200	333	KOR	KBS World radio	English	Talks	1708	PH
11865.0	2037	443	RRW	Deutsche Welle	English	Cuba's interest USA	1309	HS
11900.0	2035	443	CLN	VOA	French	News	1309	HS
11945.0	0800	232	AUS	Radio Australia	English	Sports	2408	PH
11950.0	2030	343	MDG	NHK Radio Japan	French	ID, News	1309	HS
11955.0	2028	342	AUT	AWR via Moosbrun	French	Radio Mondiale	1309	HS
11955.0	0000	444	ROU	Radio Romania Intl.,	English	Talks	0108	PH
11975.0	2025	554	ROU	Radio Romania Intl.,	French	Sign off	1309	HS
11995.0	2015	555	F	RFI	French	Political discussion	1309	HS
12095.0	2000	554	ASC	BBC World Service	English	News	1309	HS
13710.0	0740	555	ALB	CRI relay	English	Strategic club, Studio talk	1409	HS
13730.0	0747	242	IRN	IRIB	Pashtu	Word Program	1409	HS
13775.0	0750	322	TWN	Sound of Hope	Chinese	Wortpx	1409	HS
13810.0	1500	444	USA	Brother Stair	English	Coming of the Lord	1009	PH
13860.0	0752	332	D	Radio Farda, Lampertheim	Farsi	News	1409	HS
15190.0	1800	222	PHL	Radyu Pilipinas	Tagalog	News	1009	PH
15235.0	1715	555	AFS	Channel Africa	English	Talk about Somalia	1509	HS
15245.0	1500	333	KRE	Voice of Korea	English	Talks	1009	PH
15360.0	1825	554	G	KBS relay	Russian	ID ,Anncts	1409	HS
15400.0	1100	333	ROU	Radio Romania Intl.,	French	Program	0709	PH
15510.0	1735	555	G	IBRA Radio via Wooferton	Bedavi	Radio Ibrahim for Sudan	1509	HS
15540.0	1900	555	KWT	Radio Kuwait	English	News	0508	PH
15570.0	2000	444	CVA	Vatican Radio	English	Talks	1709	PH
15770.0	2300	444	USA	Brother Stair	English	Condemn violence	2208	PH
15825.0	2100	444	USA	WWCR	English	Talks	1608	PH
17490.0	1000	333	CHN	China Radio	English	Talks	0408	PH
17680.0	1200	444	ROU	Radio Romania Intl.,	English	Radio Newsreel	1809	PH

Here are the loggings from Richard A. D'Angelo of Wyomissing, Pennsylvania, USA:

- 4055.0 GUATEMALA. Radio Verdad, 0438-0519 Aug 30, music until commencement of a long drama feature until ID at 0503 before more musical selections. Poor to fair.
- 4915.0 BRAZIL. Radio Daqui - Goiânia (presumed), 0009-0022 Aug 14, heard a male announcer with Portuguese with spirited talk followed by a vocal selection. More talk noted again at 0017 but poor signal and noisy conditions made getting an ID impossible tonight. May have gone off or just lost in the noise.
- 5910.0 COLOMBIA. Alcaravan Radio - Puerto Lleras, 0010-0035 Aug 18, woman announcer with Spanish talk, IDs and brief announcements hosting a program of Latin music and vocals. Fair.
- 5950.0 ETHIOPIA. Voice of Tigray Revolution - Addis Ababa, *0256-0336 Sep 6, familiar IS followed by a man announcer with opening at 0300 in listed Tigrinya language. Short news items before music programming opened at 0304. Fair signal.
- 5970.0 BRAZIL. Radio Itatiaia - Belo Horizonte, 2305-2341 Sep 5, man announcer in Portuguese hosting music program followed by ID and beginning of a long talk. Fair.
- 5975.0 GERMANY. Adventist World Radio - Nauen, 0413-0430* Sep 27, man and woman talking in listed Bulgarian language. Group religious vocals at 045 with another man with ID at 0427 followed by instrumental music until carrier was terminated. Fair.
- 6110.0 ETHIOPIA. Radio Fana - Addis Ababa, *0254-0334 Sep 6, IS with opening ID at 0258 followed by music fanfare and a woman announcer with ID and

- opening announcements. Into a program of Horn of Africa vocals. Fair signal.
- 6134.8 BRAZIL. Radio Aprececida, 0140-0210 Sep 6, two men with a religious discussion in Portuguese followed by choir singing. Nice ID at 0200 with many station outlets mentioned. I thought this would be closedown but programming continued. Fair at peaks here but //11855 was good.
- 6135.0 VATICAN. Afia Darfur – Santa Maria di Galeria, 0310-0330* Aug 23, man in studio interviewing another man over the phone in Arabic. Several IDs at 0321 followed by a discussion by another man and a woman announcer. Carrier cut at 0330 seemingly without any closedown announcements. Fair.
- 6135.0 BRAZIL. Radio Aprececida, 0020-0114 Sep 17, vocals hosted by a man announcer with Portuguese talk, canned IF at 0029 followed by a long religious program at 0030. Once program ended at 0057 several announcements and station ID. Fair.
- 6155.0 SPAIN. Radio Exterior de España – Noblejas, 2319-2357* Aug 30, woman announcer with French language talks hosting a pop music program. Time pips at 2330 over music. Nice ID and closedown announcements from 2355 followed by IS until carrier terminated. Fair.
- 6160.0 CANADA. CKZN – St. Johns, 2308-2325 Aug 21, man with news in English followed by “CBC News” ID and weather forecast for region. “CBC Radio 1” ID followed by news features hosted by a woman talking about ISIS recruitment. Fair.
- 6175.0 ALBANIA. China Radio International – Cerrik, 2220-2247 Sep 24, Portuguese language program with talks by a man and woman alternating with music. Fair.
- 7250.0 KUWAIT. Voice of America (presumed), 0047-0100* Sep 10, talk by a man and a woman in listed Tibetan language. Amateur radio QRM intensified around 0058 as program closed making catching an ID impossible. Generally poor even before the ham QRM.
- 7255.0 NIGERIA. Voice of Nigeria – Ikorodu, 2149-2159* Sep 24, man announcer with talk in listed Hausa language. Tribal vocals with UD at 2157 followed by orchestra national anthem. Loud tone at 2159 before carrier was terminated. Fair.
- 7260.0 CHINA. China Radio International – Urumqi, 2232-2257* Aug 13, Portuguese service with music program hosted by a man and woman announcing team. D at 2256 with closedown announcements over instrumental music. Carrier cut at 2257. Fair.
- 7275.0 SPAIN. Radio Exterior de España – Noblejas, 2226-2258* Aug 30, sounded like live coverage of futbol match with several male announcers in Spanish covering the event. Heard a “Radio Nacional” ID during coverage. Re-check at 2258 and they were gone so missed closedown. Good signal.
- 7295.0 UNIDENTIFIED LOCATION. Radio Free Europe / Radio Liberty, 0357-0405* Sep 19, tuned in to hear several men talking in unidentified language although could have been Russian. At 0400 I heard a recorded station ID (“This is Radio Free Europe ... Radio Liberty ...”) by a man announcer repeated over and over. Poor to fair until Algerienne via Issoudun opened on 7295 kHz at 0400. Can’t find a location in station listings nor on website.
- 7295.0 FRANCE. Radio Algerienne via Issoudun, *0400-0433 Sep 19, missed opening announcements but programming opened with recitations followed by a male announcer with Arabic talk. More recitations and talks until 0430 when nice ID followed by another man with news. Strong signal.
- 7300.0 ENGLAND. Akbar Mufriha (HCJB) – Woofferton, 2125-2144* Sep 24, Arabic program with long talk by a man announcer followed by group vocals. Another long talk from 2130 until brief musical interlude before closedown by a woman announcer. Instrumental music until the carrier was terminated. Fair to good.
- 7395.0 MADAGASCAR. Radio Japan - Talata Volonondry, 0346-0400* Aug 23, Japanese language program with a woman announcer ID and closedown announcements at 0358 over light instrumental music. Good signal.
- 7495.0 FRANCE. Radio Algerienne – Issoudun, 2202-2300* Sep 1, tuned in to French language news prior to the commencement of the Arabic program at 2205 with recitations. ID at 2254 followed by frequency announcements. Fair.
- 9390.0 UZBEKISTAN. IBRA Radio – Tashkent, 0005-0030* Sep 6, flute music before long talk by a woman announcer in listed Bengali language. She was soon joined by a male announcer. Discussion continued for about 15 minutes before some music. Closed at 0029 with brief instrumental music prior to carrier being terminated.
- 9295.0 SWEDEN. Radio Nord Revival - Ringvalla, Sala, 2206-2240 Aug 23 and 0011-0054 Aug 24, male announcer with Swedish talk playing old time musical selections, most in Swedish. On the early broadcast there was an interview and in the latter broadcast I heard several English lyric tunes (Ella Fitzgerald, Louis Armstrong and Dean Martin) as well as a nice English ID and frequency announcements. Poor to fair for the early transmission and fair to good for the later listening period. Noted again around 0400 with Neil Sedaka song with good signal.
- 9555.0 SAUDI ARABIA. Broadcasting Service of the Kingdom of Saudi Arabia, 2255-2300* Aug 21, man announcer with Arabic talk over instrumental music followed by a man and woman talking. Vocals soon thereafter. News with music bridges between items prior to carrier terminated at 2300. Fair to good and //9870 which was poor to fair.
- 9575.0 MOROCCO (Spanish). Radio Medi Un – Nador, 0436-0507 Sep 27, pop music program hosted by a man announcer with French talk; news headlines at 0445 followed by “Grease” theme song. Several announcements by a woman announcer at 0458 with ID and detailed news at 0500. Fair but much better in recent weeks.
- 9615.0 TAIWAN. Radio Taiwan International - Kouhu (presumed), 2244-2300* Aug 25, Program mainly of long Chinese language talks with some musical breaks. Instrumental music at close followed by time pips. Appeared to sign off although it may have just disappeared in the noise. Poor.
- 9690.0 NIGERIA. Voice of Nigeria – Ikorodu, 2036-2156* Aug 30, several men participating in an excited discussion in listed Hausa language. ID at 2155 followed by African vocal selection before carrier terminated. Fair.
- 9705.0 INDIA (Goa). All India Radio Panaji, 2316-0045* Sep 1, program of continuous Hindi vocals until ID at 2329 by a woman announce rand some talk in English. More music programming until news at 0030. Closedown ID and announcements at 0043. Poor.
- 9760.0 GERMANY. Radio Farda – Biblis, 0248-0325 Sep 11, Persian language program with talks by a man and a woman. Phone calls from listeners were taken. Several nice IDs followed by some music. News at 0300 followed by various features. Fair.
- 9955.0 USA. Radio France International – Okeechobee, 0404-0427 Sep 6, woman announcer with news in English. I can’t remember the last time I heard English news from RFI. French news from 0413 followed by Sports News and Technology News with several IDs and TC (“It’s 6 – 16 here in Paris”). Fair to good signal with occasional deep fades.
- 9965.0 EGYPT. Radio Cairo, 0347-0420 Aug 21, Egyptian vocals followed by a woman announcer with Arabic language talk. 3 + 1 time pips at 0400, ID by a woman and news. Arabic vocals from 0404. More time pips at 0415. Good signal but poorly modulated signal.
- 11580.0 USA. Radio Ukraine International – Okeechobee, *2330-2359* Sep 29, IS followed by “This is Ukrainian Radio” ID with English program with news and Ukrainian Perspectives”. At close a man announcer asked for reports to <info@wrmi.net> plus postal address. Fair. Interesting to have Ukraine back on shortwave although from Florida.
- 11595.0 CLANDESTINE (Myanmar). Democratic Voice of Burma – Gavar, 0013-0030* Sep 10, woman announcer with Burmese language talks, brief instrumental music breaks before a long talk by another male speaker. Several men talking near closedown which was followed by light closing instrumental music. Fair.
- 11620.0 INDIA. All India Radio – Bengaluru, 0033-0135 Sep 6, nice program of Hindi vocals hosted by a man announcer with talks in listed Urdu language. Good

- ID at 0044 followed by another man with a long talk. Fair to good signal.
- 11660.0 CHINA. China Radio International – Kashi, 2218-2227* Aug 17, man and woman with French language talk until 2225 another man with ID and closedown announcements followed by Chinese instrumental music until carrier was terminated. Fair.
- 11695.0 UNITED ARAB EMIRATES. Radio Free Asia – Dhabayya, 0148-0215 Sep 11, two men talking in listened Tibetan language. Some music interspersed with talk features. Nice English language ID at 0200 by a man announcer ("This is Radio Free Asia. The following program is in Tibetan."). News followed with features shortly thereafter. Fair.
- 11715.0 VATICAN. Vatican Radio – Santa Marie di Galleria, 0425-0427* Sep 21, caught ending of program with vocals prior to IS and carrier being terminated. Apparently, Arabic program but talk noted. Fair to good signal.
- 11735.0 ZANZIBAR. Zanzibar Broadcasting Corporation (presumed), 2044-2059* Aug 30, a program of continuous African vocals until carrier terminated at 2059. Fair signal.
- 11755.0 FRANCE. Adventist World Radio – Issoudun, 2034-2100* Oct 4, program of long religious talks in listed Yoruba language alternating with soft tribal vocals. At 2055 woman announcer with ID and contact information with Lagos, Nigeria address. Instrumental music until carrier terminated. Poor to fair. (D'Angelo-PA)
- 11810.0 KOREA (South). KBS World, 2221-2300* Sep 28, woman announcer hosting English program with contact information followed by pop vocals. 2256 closedown ID and announcements. Fair but deteriorating to poor to fair the last twenty minutes or so.
- 11810.0 ASCENSION ISLANDS. BBC World Service, 211902200* Sep 16, man and woman talking in English until ID and program previews at 2128 A man followed with news at 2130 followed by more previews before back to news features. Closed at 2200. Fair.
- 11815.0 BRAZIL. Radio Brasil Central – Goiânia, 0015-0042 Aug 31, man announcer with Portuguese talks, ID hosting pop music program with Ritchie Valens "La Bamba" played. Many IDs and TCs alternating with music selections. Fair.
- 11855.0 BRAZIL. Radio Aperecida, 0003-0036 Aug 31, woman announcer hosting music program until a man began a long religious talk shortly after formal canned ID. Fair to good.
- 11905.0 SRI LANKA. Sri Lanka Broadcasting Corporation, *0114-0158 Sep 19, instrumental music followed by three time pip at 0115, woman announcer with Hindi talk, ID and announcements followed by Hindi vocals. Fir but slowly fading down after 0140.
- 11945.0 ROMANIA. Radio Romania International – Galbeni, 0228-0246 Sep 11, segment of classical music prior to a woman announcer with Spanish talk, ID and announcements before more music features. Fair.
- 11995.0 FRANCE. Radio France International – Issoudun, 2056-2100* Aug 17, man announcer talking in French language until a man and woman gave ID and closedown announcements with carrier terminated at 2100. Fair.
- 15140.0 OMAN. Radio Sultanate of Oman, 2139-2159* Aug 13, program of Arabic language vocals hosted by a female announcer with Arabic language talks. Program ended around 2145 followed by a man with a long talk with brief instrumental music segments. The program closed with a final female vocal selection until the transmission carrier was terminated. Fair to good.
- 15190.0 USA. Radio Africa via WRMI-Okeechobee, 2202-2209 Aug 17, vocals followed by Radio Africa Network through WRMI ID at 2203 into Back to the Bible program at 2205. Good signal.
- 15590.0 THAILAND. Radio Thailand, 0014-0029* Sep 6, first time noted in a while with familiar English news, IDs, ads and promotional announcements. Carrier cut – or switch antenna orientation – at 0029 in mid-sentence. Poor.
- 17495.0 UNITED KINGDOM. RTE – Woofferton, 1656-1700* Sep 21, checked several times for RTÉ football final but only traces noted until final check just before sign off when noted with sports scores in various sports until carrier cut at 1700. Poor to fair with very deep fades.
- 17560.0 PHILIPPINES. Voice of America – Tinang, 0008-0100* Aug 14, Mandarin program with news followed by news feature hosted by a man and woman announcers. Off with several announcements and 5 + 1 time pips at 0100 before carrier was terminated. Fair.
- 17790.0 USA. Radio Africa Network – Okeechobee, 2029-2100* Sep 16, at 2029 a man announcer informing listeners Radio Africa Network would be changing frequencies to 15190 kHz at top of the hour. A Bible study program followed but at 2059 another ID with information about upcoming frequency change which happened at 2100. Fair to good signal.
- 17850.0 SPAIN. Radio Exterior de España – Noblejas, 1904-1928 Sep 16, sports coverage with several men in Spanish. Good signal.
- 25910.0 USA. KLDE – Eldorado, Texas, 1915-2006 Oct 4, program of lively Latin vocals with ads in English noted plus "104.9 FM" ID noted at 1932. Mix of Spanish and English announcements. Nice English ID at 2001: "KLDE ... 104.9 FM ... Eldorado – San Angelo". Fair to good. While I was able to copy the station in FM Mode, reception was actually quite good in regular AM mode. Usually station operating in this region are in FM mode with very deep fades.

Thanks a lot to our club members for your contributions:

HS : Harald Suess, Strasshof an der Nordbahn, Austria. SANGEAN ATS 909 with SONY AN LP1 antenna

PH : Paul Hayes, Limerick, Ireland. Sangean 909 with Telescopic antenna

RAD : Richard A. D'Angelo, Wyomissing, PA, USA. Ten-Tec RX-340, Drake R-8B, Eton E1, Lowe HF-150 with Alpha Delta DX Sloper, Datong FL3.

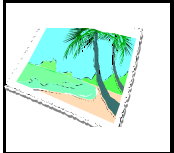
Dear Friends,

Welcome to the October edition of Logbook.

This time we have contributions from three members only.

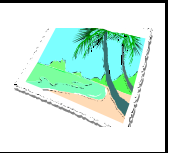
Till next time,

Ashok Kumar Bose



QSL CORNER

Editor: Dario Gabrielli, Viale della Resistenza 33b, IT-30031 Dolo (Ve), ITALY
eMail: qsl@wwdxc.de



Australia: Reach Beyond Australia 15525 kHz. Japanese program. Full data QSL card "August 2014 - HCJB Listeners Meeting in Nasu" received in 10 days for report to HCJB Japan: HCJB Japan c/o Yodobashi Church, Hyakunin-cho 1-17-8, Shinjuku-ku, Tokyo, 169-0073 Japan (HT)

China: China Radio International 7395 kHz. Japanese program. Partial data QSL card "Karola glacier" received in 22 days for report to Japanese section: <nihao2180@cri.com.cn> (HT)

Ireland: R.Tele Eireann 17495/11750 kHz. Special English programme. e-QSL received in 10 days for reception report in MP3 format sent to <hearus@rte.ie> (DGa)

Mongolia: Voice of Mongolia 12085 kHz. Japanese program. Full data QSL card "Khar Bukh Ruins, Bulgan" received in 15 days for report to Japanese Section: Voice of Mongolia, Japanese Section, CPO Box 316, Ulaanbaatar 211213, Mongolia (HT)

Northern Mariana Islands: Voice of America via Tinian 9490 kHz. Korean program. Full data QSL card "Assignments editors discuss the latest story developments in the VOA newsroom in Washington, D.C." received in 66 days for report to Korean Service: <korea@voanews.com> (HT)

Philippines: FEBC Philippines 9345 kHz. Chinese program. Full data E-QSL "Aerial View of Antenna Field, Bocaue, Bulacan, Philippines" received in 3 days for report to: <info@febc.org> (HT)

Radyo Pilipinas 9925 kHz. Filipino program. Full data QSL card received in 19 days for report with 2 IRC's to: Radyo Pilipinas, 4th Floor, PIABuilding, Visayas Avenue, Quezon City 1100, Philippines (HT)

FEBC Philippines 9345 kHz. Chinese program. Full data QSL card "Voice of Friendship Monitoring Verification Card" received in 22 days for report with 1 IRC to FEBC Hong Kong: Far East Broadcasting Co.,Ltd., 10th floor, Media Center, 1, Tai Yau Street, San Po Kong, Kowloon, Hong Kong (HT)



Voice of Friendship / FEBC 9345 kHz

UAE: Deutsche Welle via Dhabayya 17800 kHz. Pashto program. Full data QSL card "Schweriner Dom" received in 15 days for report to Customer Service: <info@dw.de> (HT)

Vietnam: Voice of Vietnam 12020 kHz. Japanese program. Full data QSL card "Dao Do people" received in 22 days for report to Japanese section: <japanese@vov.org.vn> (HT)

Voice of Vietnam 12020 kHz. Japanese program. Full data QSL card "Do Son Buffalo Fighting Festival" received in 13 days for report to Japanese Section: <japanese@vov.org.vn> (HT)

The reporter of this edition of QSL CORNER has been:

HT = Hironori Takeuchi, Chiba, Japan
DGa = Dario Gabrielli, Dolo, Italy

Dear Friends,

Many thanks for continued contribution to this section that I hope can continue in future. I remember you to include details about the program of the radio stations that you receive confirmation from (e.g. English program, Technical Department etc.). So I ask you if you can continue to include details when known. Naturally it's useful also to know the postal address or eMail where you sent the reception report to. I remember that the next DX MAGAZINE will be the November edition - so the contribution deadline is on **Saturday 15th November 2014**.

Dario

RADIO FREE ASIA RELEASES 18TH ANNIVERSARY QSL

Radio Free Asia (RFA) announces the release of its 18th Anniversary QSL card. RFA's first broadcast was in Mandarin on September 29, 1996 at 2100 UTC. RFA is a private, nonprofit corporation, broadcasting news and information to listeners in Asian countries where full, accurate, and timely news reports are unavailable. Acting as a substitute for indigenous free media, RFA concentrates coverage on events occurring in and/or affecting Burma, Cambodia, Laos, North Korea, the People's Republic of China, and Vietnam. RFA does not express editorial opinions but provides news, analysis, commentary, and cultural programming in the languages of the country of broadcast. This is RFA's 55th QSL design and will be used to **confirm all valid RFA reception reports from September 1 up to December 31, 2014.**



September 29, 1996-2014
18 Years of Broadcasting

Radio Free Asia (RFA) is a private, nonprofit corporation that broadcasts news and information to listeners in Asian countries where full, accurate, and timely news reports are unavailable. Created by US-Congress in 1994 and incorporated in 1996, RFA currently broadcasts in Burmese, Cantonese, Khmer, Korean to North Korea, Lao, Mandarin, the Wu dialect, Vietnamese, Tibetan (Uke, Amdo, and Kham), and Uyghur. RFA strives for accuracy, balance and fairness in its editorial content. As a 'surrogate' broadcaster, RFA provides news and commentary specific to each of its target countries, acting as the free press these countries lack. RFA broadcasts only in local languages and dialects, and most of its broadcasts comprise news of specific local interest. More information about Radio Free Asia, including our current broadcast frequency schedule, is available at <<http://www.rfa.org>>. RFA encourages listeners to submit reception reports. Reception reports are valuable to RFA as they help us evaluate the signal strength and quality of our transmissions. RFA confirms all accurate reception reports by mailing a QSL card to the listener. RFA welcomes all reception report submissions at RFA-website <<http://www.techweb.rfa.org>> (follow the QSL REPORTS link) not only from DX'ers, but also from its general listening audience in target areas. Reception reports are also accepted by email at <qsl@rfa.org>, and for anyone without Internet access, reception reports can be mailed to our postal address.

Reception Reports
Radio Free Asia
2025 M. Street NW, Suite 300
Washington DC 20036
United States of America

Upon request, RFA will also send a copy of the current broadcast schedule and a station sticker.

RFA's AJ via Siegbert Gerhard, Frankfurt am Main