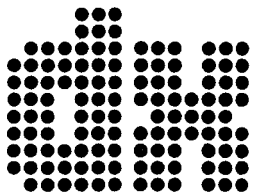


8/9 - 2023 € 3,00

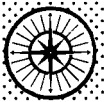
BBC ORTF  
ADIO MOSKOU  
NDR RAI TVR



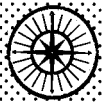
ISSN 0175-6877



WORLD WIDE DX CLUB



WORLD WIDE DX CLUB



## Staff of WORLDWIDE DX CLUB:

**PRESIDENT AND CHIEF EDITOR** . . . ✉ WWDXC Headquarters, Michael Bethge, Postfach 12 14, D-61282 Bad Homburg, Germany ● E-Mail: <mail@wwdxc.de>  
☎ +49-6172-123118 ● ☎ +49-6172-123117

**BROADCASTING NEWS EDITOR** . . . ✉ Walter Eibl, Germany  
E-Mail: <news@wwdxc.de>

**LOGBOOK EDITOR** . . . . . ✉ Ashok Kumar Bose, 106 Aspermont Crescent, Brampton, Ontario, L6P 3Z3, Canada ● E-Mail: <logbook@wwdxc.de>

**QSL CORNER EDITOR** . . . . . ✉ Dário Gabrielli, Viale della Resistenza 33b, I-30031 Dolo (Ve), Italy  
E-Mail: <qsl@wwdxc.de>

**TOP NEWS EDITOR (Internet)** . . . . ✉ Wolfgang Büschel, Hoffeld, Sprollstrasse 87, D-70597 Stuttgart, Germany ● E-Mail: <topnews@wwdxc.de>

**TREASURER & SECRETARY** . . . . ✉ Karin Bethge, Urseler Strasse 18, D-61348 Bad Homburg, Germany

Each of the editors mentioned above is self-responsible for the contents of his composed column. Furthermore, we cannot be responsible for the contents of advertisements published in DX MAGAZINE.

We have no fixed deadlines. Contributions may be sent either to WWDXC Headquarters or directly to our editors at any time. If you send your contributions to WWDXC Headquarters, please do not forget to write all contributions for the different sections on separate sheets of paper, so that we are able to distribute them to the competent section editors.

- WORLDWIDE DX CLUB homepage in the Internet: <<http://www.wwdxc.de>>
- Weekly "TopNews" by Wolfgang Büschel: <<http://topnews.wwdxc.de>> (available free of charge by eMail to our members on request)
- Archive copies of DX MAGAZINE (PDF) since the year 2000: <<http://online.wwdxc.de>>
- Podcasts in German and various livestreams of radio stations: <<http://podcast.wwdxc.de>>

### QSL



**Radio Prague International** | **100**  
Czech Radio

*Radio Prague QSL series 2023 (100 years Czech Radio)*

DX MAGAZINE is the monthly publication of WORLDWIDE DX CLUB, Postfach 12 14, D-61282 Bad Homburg, Germany. Price for a single copy: € 1.50 or 2 International Reply Coupons (IRC's); annual subscription rate: € 18.00. Other currencies and air mail rates on request. Cover: Peter Pohle + Jürgen Kauer (KAVOP)



DX MAGAZINE No. 8/9    ■    Vol. LVIII    ■    August/September 2023

Hello again,

Welcome to the annual summer double issue of our DX MAGAZINE. Like in the past years you will find our normal monthly sections, some articles, and our annual "List of Members". *Please notice that our "List of Members" is only sent to our members - not to non-members, radio stations or other clubs.* I have also included Wolfgang Büschel's list "SWL / Media Programs in English, German & Spanish" and Walter Eibl's "Schedules of Broadcasts in German - Hörfahrplan Deutsch". I hope that you will enjoy this double edition and wish you a nice and sunny late summer.

Die **Hamburger Kurzwellenfreunde** laden ein zum DX-Camp am Elbe-Lübeck-Kanal, ins Schullandheim „Haus Lankau“, zwischen Ratzeburg und Mölln. Das ist eine bewährte Location in malerischer Außenlage, mit ausreichend Platz für Antennen.

Es wird zwei Camps geben. Sie finden statt vom 21. bis 28. November 2023 und vom 20. bis 27. Februar 2024 im Schullandheim „Haus Lankau“, Vossbergweg 38, 23881 Lankau.

Weitere Infos und Anmeldung: Hans-Jörg Winkel, Bahnhofstr. 22, 22885 Barsbüttel, Tel. 04072-730412, Email: <de2hfw@gmx.net>.

And with this best wishes and good DX until October from

**NEWS ABOUT BROADCASTING (+other) STATIONS**  
**Editor: WALTER EIBL ■ eMail: <news@wwdxc.de>**

**DX MAGAZINE July 2023 > Correction / clearing <**

**Taiwan - ONLY** remaining broadcasts of those languages as from August 01, 2023:

Japanese: 9740 kHz (11:00-12:00 UTC)  
 English: 9405 kHz (16:00-17:00 UTC)  
 Indonesian: 11915 kHz (10:00-11:00 UTC)  
 Thai: 9525 kHz (13:00-14:00 UTC)  
 Vietnamese: 9695 khz (11:00-12:00 UTC)  
 Korean: 9700 kHz (10:30-11:00 UTC)  
 (mb / we)

**ANTARCTICA ARGENTINE** - BBC Monitoring: Argentina has 'improved' Antarctic radio station airing. Argentine National Radio station LRA 36 "Archangel San Gabriel", which broadcasts from the Esperanza Base in Argentina's sector of the Antarctic, was including as a key part of its programming the topic of the Argentine sovereignty claim over the "Malvinas" (Falkland Islands), and it was undergoing renovations and improvements to expand its reach, Argentine news agency Telam reported on its website on 28 July.

The article quoted the radio station coordinator, Juan Benavente, as saying that one of the station's aims was to "Malvinizar" (talk about Argentine sovereignty over the Falklands) from Antarctica", an apparent reference to this

programming promoting Argentina's long-running territorial claims over the South Atlantic islands.

Telam quoted Benavente talking about including programme content such as testimonies from veterans of the Falklands War, but also "stories that unite sports and education with the [Falklands] archipelago".

An example of this was a 15 March communication with an Argentine marathon runner who was participating in a competition in the "Malvinas" (Falklands), the news agency report said.

"This was something that filled us with emotion, it is something that had never been done before," Benavente said, as quoted by Telam. Other goals of the Esperanza Base station, according to Benavente, were to inform about the activities carried out at the different Argentine bases in Antarctica and to spread Argentina's culture to the rest of the world, Telam said.

The report said that, since the beginning of 2023, the radio station had been working on a "renovation and improvement strategy".

Telam added that a more powerful transmitter had been installed for the FM broadcasting system as well as an antenna with which it was already possible for the signal to reach the Petrel Base - 40 kilometres away. Eventually, it was also expected that the radio broadcasts would be able to reach international tourist cruises passing through the strait in front of the Esperanza Base during the austral summer, thanks to the work being conducted, the report said.

The news agency said that LRA36 had been inaugurated in 1979 and broadcast on shortwave. It worked jointly with Argentina's state-owned international broadcaster RAE and was listened to in places as far off as Alaska, Iceland or Japan, according to the report. It was also transmitted via modulated frequency with local reach and, since a few years ago, through streaming over the Internet.

The report noted that, since the previous austral summer, the radio station had begun broadcasting the programme "Uniendo Voces" (Joining Voices) in collaboration with Quilmes National University (UNQ). Telam added that, for the first time this year, the radio station began to broadcast the Antarctic radio bulletin, "Rantar", which was 7-10 minutes long, on a "weekly/bi-weekly" basis.

"It includes event anniversaries related to Antarctica and the Malvinas, news about the station itself or amateur radio stations, and some technical-type pieces," Telam said.

Telam\_news\_agency website, Buenos Aires, in Spanish 28 July.  
(By BBC\_Monitoring, August 1, 2023)

I believe this is the referenced article:

<<https://www.telam.com.ar/notas/202307/635369-radio-antartida-soberania-identidad-inclusion.html>>  
(Mike Cooper Atlanta-GA-USA, WOR Aug 4)

15475.98 kHz RC USB, Sat Aug 12 at 1753 UT, LRA36 is on with music prelude, S7/S9 into Argentine SDR; tnx to reminder from Manuel Mendez who was already getting it direct to NoWe Spain at 1747 UT. I mostly miss the first bihour of KUCO's opera this week, from WFMT, Bellini's 'La Sonnambula'. 1757 UT CW ID. 1758 UT vocal s/on with multilingual IDs.

1759UT temps in July were -30, down to -41.4, winds 10? meters per second. Conversion factor to mph is X 2.237 22 mph. 1803 UT live intro of 'Uniendo Voces', staff, Juan Benavente speaking. 1811 UT will be carrying 'Zona de Fuego' program sometime. Now? -19 degrees. Thursday was first 'Estudio 9' show from Univ. de Quilmes. 1816 UT kid? or woman voice with history mentioning 1930y. 1826 UT new housing built at Petrel base. 1827 UT accuses British of destroying Uruguayan/Argentine scientific, not military base in South Sandwich during Malvinas war.

1832UT song. 1838 UT contact info. 1842 UT about space exploration, launch from New Mexico. 1845 UT there have also been rocket launches for AntArg bases. 1853 UT story of an engaged, then married couple at an Anta base. Still going past 1900+ UT when it's time to wrap up and dispatch this report.  
(gh, WOR Aug 12)

**ARGENTINA** - Nach zwei Wochen Pause gab es ab 2. August 2023 wieder ein deutschsprachiges Programm von RAE Argentina al Mundo. Die Redakteurin der Sendung Rayen Braun: "Wir senden so weit wie moeglich montags bis freitags 2000-2100 Uhr Weltzeit." Man findet die juengeren Programme bei

<<https://www.radionacional.com.ar/herzlich-willkommen/>>

und durch Vermittlung von Michael Bethge ein Programmarchiv im Umfang etwa eines Monats bei

<<https://www.wwdxc.de/rae.shtml>>  
(Bernd Seiser-D)

**AUSTRALIA** - UNID 4970 kHz Thanks very much to Bryan Clark for the tip for this new frequency for one of the low powered stations ! I could just make out an extremely faint carrier around 1000+ UT, on July 28, but no hint of any audio; later, around my local sunrise (1310 UT), I had a much improved carrier, but still not able to pull in any audio; it seems I will need outstanding propagation to be able to catch any audio here.

This is a new signal on this frequency. The new frequency is for Peter Tate's station that has a new license -

<[https://web.acma.gov.au/rrl/licence\\_image.extract\\_pdf?pLICENCE\\_NO=1989836/5](https://web.acma.gov.au/rrl/licence_image.extract_pdf?pLICENCE_NO=1989836/5)>

Greatly appreciate Bryan's alert ! Certainly this frequency needs much more monitoring now!  
(via Bryan Clark-Mangawhai-NZ, Ron Howard-CA-USA, WOR and direct July 29)

4970 kHz "Radio 567" (presumed), 1305-1335 UT on Aug 2. Another day of bits and pieces of hearing music; the best day so far, but still a little bit too weak to ID any songs.  
(Ron Howard-CA-USA, via wwdxc BC-DX TopNews Aug 3)

5035 kHz Unique R., Moree, NSW. 1040 UT in LSB. Usual antique pop selections. Back in March, announced it was leaving shortwave. Now back again in July with the same tinny, lo-fi SSB quality that is totally unsuitable for a music station ! Fair to scratchy signal. Appears to be a very irregular operation at present, and nothing heard on 3210 kHz. The licence states the txer is now located at Moree, NSW. July 16.  
(Rob Wagner VK3BVW, Mount Evelyn-Vic-AUS, ADXN of ARDXC; direct Aug 1)

**BRAZIL** - 11815v R. Brasil Central at 0100 UT, M presenter in Portuguese, mix of Brazilian music bf, but other styles after, including rendition of Dr. Zhivago theme. Fair, Aug. 7  
(Rick Barton, Sun City-AZ-USA, Arizona Update Aug 1-7, WOR Aug 08)

11780 kHz RN Amazonia music, Jingle "Radio Nacional" at :45 and into OM in Port mentioning Brazil and at :47 back to EZL Pprt Music. ID and mention of Brasilia at :59 and singing ID "Radio Nacional". RNB, RNA etc 'laundry list' ID at 2301 UT w/mentions of AM, SW and FM and into Port chatter by OM until back to music at :02:30 ... 4+54+44 LSB sync needed to avoid Turkey before their s/off, but clear after. 2220- UT on 2309 5 Aug.  
(Ken Zichi, Williamston-MI-USA, WOR Aug 11)

**CHINA** - 6065 kHz CNR2 (China Business Radio), 1330 UT on July 28. Continuing with BoH ID in English ("This is C-N-R Business Radio"); // 6030 kHz, which was mixing with CNR1 DRM (poor frequency assignments); for many years 6155 kHz was my favorite CNR2 frequency to listen to, but that has been silent for a long time now.

6125 kHz CNR1, 1219+ UT, July 28. Live coverage of the opening ceremony for the major sports event - "Chengdu FISU Summer World University Games Opening Ceremony" [FISU/Federation Internationale du Sport Universitaire]; YouTube with almost two hours of beautiful coverage -  
<<https://www.youtube.com/watch?v=Lij9wR88vac>> University students from across the entire world participate.  
(Ron Howard-CA-USA, WOR and direct July 29)

*CHINA RADIO INTERNATIONAL* A23: March 26 - October 29, 2023 (June, 2023):

0000-0057	Cambodian	11990/nnn, 9765/nnn, 684/dof
	Cantonese	17490/be, 11820/xi
	Chinese	13655/xi, 13580/be, 11975/xi, 11900/be, 11780/jin, 9880/xi
	English	17740/xi, 15125/be, 13750/be, 11790/xi, 9700/kas, 7350/kas, 6180/kas, 6075/kas
	Hakka	15100/be, 9610/xi, 9550/xi, 9460/xi
	Mongolian	11875/be, 9470/xi
	Portuguese	17880/be, 9710/kas
	Russian	9445/huh, 7430/huh
	Spanish	11980/CUBA, 5990/CUBA
	Vietnamese	13770/xi, 11770/be, 603/dof
0100-0157	Amy	17490/be, 15425/xi, 15100/be, 11980/xi, 11945/xi, 9610/xi, 9550/xi, 9460/xi
	Chinese	17690/xi, 13580/be, 11770/nnn, 11650/ur, 9655/nnn, 9560/kas
	English	17740/xi, 17640/kas, 15125/be, 13640/kas, 11770/kas, 9580/CUBA, 9535/kas, 6180/kas
	Russian	13600/xi, 5905/kas
	Urdu	9695/kas, 7240/kas
0100-0257	Chinese	15160/jin, 13655/xi
	Spanish	9710/kas, 9590/kas
0130-0227	Nepalese	13780/xi, 11860/xi
0200-0227	Pashto	15435/xi, 11870/kas, 9765/kas

0200-0257	Amoy	17490/be, 15425/xi
	Bengali	11640/xi, 9655/xi
	Chinese	17840/be, 11880/kas, 9825/kas, 9580/CUBA
	English	13640/kas, 11770/kas
	Russian	17640/xi, 5905/kas
	Spanish	9710/kas, 9595/kas
	Tamil	17655/kas, 13600/kas
	Urdu	11650/kas, 9450/kas
0230-0327	Nepalese	13780/xi, 11730/xi
0300-0357	Chinese	17540/be, 15230/xi, 15160/jin, 11740/be, 9450/kas
	English	17840/be, 15785/xi, 15110/kas, 13590/be, 12000/kas, 9790/CUBA
	Hindi	17655/kas, 15350/kas, 13720/kas, 11640/kas
	Russian	17710/jin, 17640/xi, 15435/ur, 5905/kas
	Tamil	13730/xi, 13600/kas
0400-0457	Cantonese	15230/xi, 15160/jin, 9790/CUBA
	Chinese	15110/kas, 13640/kas, 11740/be
	English	17855/be, 17840/be, 17730/xi, 15785/xi, 13590/be
	Hakka	17710/be, 17540/kas, 17510/xi, 15350/kas
	Russian	17640/xi, 15665/ur, 15445/kas, 5905/kas
	Vietnamese	17740/xi, 11650/xi, 684/dof, 603/dof
0500-0557	Cantonese	15230/xi, 15160/jin
	Chinese	17840/be, 15785/xi, 15110/kas, 11740/be
	English	17855/be, 17730/xi, 17540/kas, 17510/kas, 15465/kas, 15350/kas, 11895/kas
	Russian	15665/ur, 15445/kas
	Vietnamese	17740/xi, 11650/xi, 684/dof, 603/dof
0500-0657	Arabic	17485/kas
	German	17615/ur, 17720/kas (music only!)
0600-0657	Chinese	17740/xi, 17650/kas, 17615/xi, 15785/xi, 15230/xi, 15160/jin, 15120/be, 11710/nnn
	English	17710/be, 17540/kas, 17510/kas, 15465/kas, 15350/kas, 15145/kas, 13645/xi, 11895/kas, 11870/kas
	Italian	17520/kas
0600-0757	French	17865/kas
	Spanish	17680/kas
0700-0757	Cantonese	17875/xi, 15230/xi, 11640/jin
	Chaozhou	17750/xi, 15145/xi
	Chinese	17840/xi, 17740/xi, 17650/kas, 17615/xi, 17520/kas, 11875/nnn, 11710/nnn
	English	17710/be, 13660/xi
0700-0857	English	17670/kas, 17540/kas, 17490/kas, 15465/kas, 15350/kas, 11895/kas
0800-0857	Chinese	17650/kas, 17560/xi, 15560/xi, 15230/xi, 11640/jin, 9880/be
	English	11710/xi
0800-0957	Russian	15665/ur, 15335/kas
0830-0927	Indonesian	17735/xi, 15135/xi
0900-0957	Chinese	17560/xi, 15560/xi, 13730/xi, 13570/xi, 12005/xi, 11895/nnn, 9880/be, 7430/jin
	(Voice of the South China Sea)	
	English	17750/kas, 17650/kas, 17570/ur, 17490/kas, 15350/kas, 13800/xi, 11905/jin, 11710/xi
	Romanian	17620/kas
0900-1057	Chinese	17840/kas, 17530/xi, 15525/ur, 15250/xi, 13850/be, 11980/xi, 9460/nnn
0930-1027	Malay	17680/xi, 15135/xi
1000-1057	Cantonese	12005/xi, 11875/xi
	Chinese	17650/kas, 9890/xi, 9880/be, 9820/be
	English	17750/kas, 17490/kas, 15350/kas, 13720/xi, 13590/be, 13580/xi, 13570/xi, 11905/jin, 11895/xi, 11635/be
	Hungarian	17570/kas, 15220/kas
	Russian	11935/szg, 9725/huh, 7390/huh, 1323/ur, 1116, 963/huh
1000-1257	Japanese	11620/xi, 7325/jin
1030-1127	Cambodian	15160/nnn, 9490/xi, 684/dof
	Indonesian	17605/xi, 15135/xi
1100-1157	Bulgarian	15180/kas
	Burmese	9880/xi, 1188/?
	Cantonese	9645/be, 9590/xi, 9570/xi, 9540/be, 7370/nnn, 603/dof
	Chaozhou	11875/xi, 9440/xi
	Chinese	17650/kas, 13755/kas, 13610/kas, 11750/be, 9610/xi, 7435/be
	Czech	17570/kas, 15225/kas
	English	13720/xi, 13590/be, 11795/kas, 1269yun
	Esperanto	15110/ur, 11635/ur
	Mongolian	11985/xi, 7390/huh
	Russian	13860/be, 11935/szg, 9725/huh, 13231ha, 1116, 963/huh
	Vietnamese	17530/xi, 11720/bji, 9550/be, 1296yun
1100-1257	English	17490/kas, 15660/kas, 11650/ur, 9500/kas, 5955/be
	Korean	13570/xi, 1323cah, 1017 Changzhou Henglin
1130-1157	Filipino	12070/nnn, 11955/xi, 7410/nnn, 5985/be, 1341/gua
1130-1227	Thai	9785/xi, 7360/xi
1200-1227	Filipino	17510/nnn, 11955/xi (Voice of the South China Sea)
1200-1257	Amoy	11910/be
	Cantonese	9570/CUBA
	Cambodian	11680/nnn, 9440/xi
	Chinese	17650/kas, 15110/ur, 13755/kas, 13610/kas, 7435/be
	English	15590/ur, 15660/kas, 15555/xi, 11980/xi, 11760/xi, 9760/xi, 9730/xi, 9645/be, 9600/xi, 9460/kas, 1341/Huadu Guangdong, 1341/?, 1269/yun, 1188/?, 684/dof

	Mongolian	5990/huh, 5915/huh
	Russian	15335/szg, 13600/xi, 13575/ur, 11935/szg, 7230/kas, 6100/be, 1323/lha, 963/huh
	Serbian	15180/kas
	Vietnamese	11720/bji, 11640/xi (Voice of the South China Sea) , 9550/be, 1296/yun
1200-1400	Chinese	13810/kas, 11790/kas - news radio
	Chinese	9855/be, 9540/xi, 7440/nnn
	French	17560/kas
1230-1327	Laotian	9785/xi, 7360/xi
	Malay	13795/xi, 11955/xi (Voice of the South China Sea)
1300-1357	Bengali	11610/xi, 9600/bji, 9490/xi
	Burmese	11780/xi, 9880/xi, 1188/?
	Chinese	13855/kas, 13650/ur, 7435/be, 7215/xi
	English	15590/ur, 13755/kas, 13670/kas, 11980/xi, 11910/be, 11760/xi, 9870/xi, 9800/xi, 9765/be, 9730/nnn, 9500/kas, 5955/be, 1341/Huadu Guangdong, 684/dof
	Esperanto	11650/CUBA, 9440/nnn
	French	17880/Mali, 17650/kas, (13685/Mali #)
	Hindi	11675/ur, 9450/kas, 1422/kas
	Japanese	7410jin, 7325/xi, 1044/?
	Korean	12025/xi, 1323/cah, 1017/Changzhou Henglin
	Mongolian	7285/be, 6100/be
	Russian	13600/xi, 9675/szg, 7400/kas, 6050/huh, 5990/huh, 5915/huh, 1323/lha, 963/huh
	Vietnamese	9685/xi, 9550/be, 1296/yun, 603/dof
1330-1427	Indonesian	11955/xi, 9535/xi (Voice of the South China Sea)
	Thai	9785/xi, 7360/xi, 1080/?
1400-1457	Amoy	11650/xi, 9655/xi
	Bengali	11610/xi, 9490/xi, 1269/yun
	Burmese	11780/xi
	Cambodian	9880/nnn, 6055/xi, 684/dof
	Chinese	15410/kas, 13855/kas, 12025/ur, 9730/kas, 7435/be, 7410/be, 7235/kas, 6040/xi
	English	17630/Mali, 15590/ur, 13710/kas, (13685/Mali #), 11880/CUBA, 11815/ur, 11765/ur, 11675/ur, 9870/xi, 9765/xi, 5955/be, 1422/kas
	Japanese	7410jin, 7360/xi, 1044
	Korean	5965/xi, 1017/?
	Mongolian	5990/huh, 5915/huh
	Nepalese	7435/xi, 7250/xi, 1188/?
	Russian	11910/xi, 9675/szg, 5905/kas, 1323/lha
	Sinhalese	9740/jin, 7265/kas
	Tamil	13600/kas, 11685/kas
	Urdu	11660/xi, 9800/kas, 1422/kas
	Vietnamese	12010/bji, 9550/be, 684/dof, 603/dof
1430-1457	Filipino	11640/nnn, 7325/nnn, 1341/?
1430-1527	Laotian	9785/xi, 7360/xi, 1080/?
1500-1527	Pashto	11665/xi, 9665/kas
	Persian	9600/kas, 9570/ur
1500-1557	Bengali	9610/xi, 9490/xi
	Chinese	13755/kas, 13680/kas, 9560/kas, 9455/xi, 7435/be, 7235/kas, 5910/be
	English	17630/Mali, 15245/kas, (13685/Mali #), 13640/kas, 11880/CUBA, 11610/kas, 9880/nnn, 9870/xi, 9720/ur, 9675jin, 7395/ur, 7325/be, 5955/be, 1323/lha, 1188/?
	Hindi	7265/kas, 7225/ur
	Japanese	9585/xi, 7410/jin, 1044/?
	Nepalese	7435/xi, 7250/xi
	Russian	13860/szg, 11790/ur, 9880/xi, 5990/huh, 5965/be, 5915/huh, 5905/kas, 1323/cah, 963/hua
	Tamil	11685/kas, 9690/kas
	Turkish	13710/xi
	Urdu	9535/kas, 7285/xi, 1422/kas
	Vietnamese	9550/be, 684/dof, 603/dof
1530-1557	Pashto	11880/xi, 9665/kas, 9570/ur
1600-1657	Arabic	17880/Mali, (15125/Mali #)
	English	15250/kas, 13760/kas, 11965/kas, 11940/kas, 11900/jin, 9880/nnn, 9570/be, 7235/kas, 6175/nnn, 6060/xi, 1323/lha, 1080/?
	Hakka	11880/xi, 9770/ur
	Hindi	7395/xi, 7235/kas, 5915/kas, 1422/kas, 1269/yun, 1188/?
	Russian	11875/ur, 9730/szg, 9605/be, 5990/kas, 5905/kas
	Swahili	7245/xi, 5985/be
	Turkish	13710/xi, 6165/ur
	Vietnamese	9550/be, 7315/xi, 684/dof, 603/dof
1600-1757	Arabic	13790/kas
	French	17765/kas
	German	11725/xi, 7380/bji (music only)
1630-1727	Hausa	13870/kas, 9685/xi
1700-1757	Croatian	11825/be, 9410/kas
	Cantonese	9800/ur, 9770/xi
	English	13760/kas, 13570/xi, 12015/be, 9880/nnn, 9570/be, 7420/kas, 7410/kas, 7330/jin, 7265/xi, 7235/be, 6175/nnn, 6165/be, 6140/kas, 6060/xi, 1323/htb, 1080/xua
	Esperanto	13670/be, 11650/xi
	Russian	11875/ur, 9605/szg, 9470bji, 7265/ur, 1521/ur
	Swahili	15125/Mali, (13645/Mali #), 7215/xi, 5985/be
1730-1827	Chinese	13710/xi, 11660/szg, 9695/xi, 9685/ur, 7275/ur

	Hausa	(13645/Mali(1800-) #), 11640/Mali(1800-), 9685/xi, 13660/kas
1800-1827	Persian	9670/be, 7415/xi
1800-1857	Chaozhou	13700/ur, 11895/xi
	English	13760/kas, 9600/be
	Italian	7435/jin, 7340/kas
	Russian	9765/szg, 9560/bji, 7210/ur
1800-1957	French	11695/kas, 9480/xi
	German	11775/kas, 11650/ur, 7395/kas (music only)
1830-1857	Bulgarian	13710/xi, 7265/ur, 6020/szg
	Persian	9670/be, 7415/xi
1830-1927	Arabic	(13685/Mali #), 11640/Mali
1830-2027	French	13660/ur, 9645/xi
1900-1927	Czech	9515/be, 7415/ur
	Hungarian	9560/ur, 7435/xi
	Romanian	6090/ur
1900-1957	Albanian	7385/kas, 6020/szg
	Cantonese	11895/kas, 9575/be
	English	9440/xi, 7295/kas
	Portuguese	11750/jin, 9765/be, 9730/kas, 9535bjj, 7205/xi, 5985/be
	Russian	9525/be, 7245/bji, 6110/xi
	Turkish	13710/xi, 9655/xi
1930-1957	Czech	7415/ur
	Portuguese	(13630/Mali #), 11640/Mali
	Romanian	7435/xi, 6090/ur
1930-2027	Esperanto	9745/ur, 7265/ur
2000-2027	Serbian	9585/kas, 7390/xi, 7325/ur
2000-2057	Chinese	13670/be, 9865/xi, 7335/szg, 7255/kas, 7205/xi
	English	9600/kas, 9440/xi, 7415/kas, 7295/kas, 5985/be
	Polish	7305/ur, 6020/szg
	Russian	9525/be, 7245/bji
2000-2127	English	(13630/Mali #), 11640/Mali
2000-2157	Arabic	6100/xi
	English	11770/xi, 9600/kas, 7285/xi
2030-2057	Bulgarian	11940/xi, 9720/ur
	Hungarian	9585/kas, 7390/jin
2030-2127	Italian	7345/kas, 7265/ur
2030-2227	French	11660/kas, 9570/ur
2100-2127	Serbian	7445/xi, 7325/xi
2100-2157	Croatian	13670/be, 11825/be
	English	9600/kas, 7415/kas, 7325/be, 7205/xi
	Serbian	6135/be
2100-2257	Korean	7290/xi, 1323, 1017
	Spanish	9640/kas, 7335/szg
2130-2157	Hungarian	7445/ur
2130-2227	French	(13630/Mali #, 11975/Mali #)
2200-2257	Chinese	9675/be, 7430/jin, 7395/ur, 7325/xi, 7265/xi, 7215/xi, 6140/xi, 6100/xi, 5975/be
	English	9590/be
	Esperanto	9880/kas, 7300/kas
	Japanese	13640/jin, 11770/xi
	Portuguese	9685/kas, 9410/kas, 7260/ur, 6175/xi
	Spanish	17880/be
2200-2400	Spanish	7250/ur
2300-2357	Cambodian	9765/nnn, 7430/nnn, 684/dof
	Cantonese	15100/be, 11945/xi, 9460/xi, 7325/xi, 6140/xi
	Chinese	11975/Mali, 11900/be, 9865/ur
	English	11955/xi, 11790/xi, 11690/be, 7350/kas, 6180/kas, 5990/CUBA, 5915/kas
	Japanese	13640/jin, 11770/xi
	Mongolian	12085/xi, 9470/xi
	Portuguese	17880/be, 13650/CUBA
	Russian	9445/huh, 7430/huh
	Vietnamese	13770/xi, 11620/be, 603/dof
2300-0100	Spanish	9800/kas, 9590/kas
2330-0030	Sinhalese	9490/xi, 7260/kas

(via Tom Laobaixing / China media monitors)

Sites used for international MW and international and domestic SW:

/cah Changchun: 1017 kHz

/dof Dongfang: 603/684 kHz 600kW

/hdn Huadian: 1323 kHz 600kW

/huadu: 1341 kHz

/hei Heilongjiang Province: (\*) 1323 kHz

/hnl Changzhou, Henglin: 1044 kHz 1000 kW

/htb Hutubi: 1521 kHz 500 kW

/kas Kashgar: 1422 kHz 600 kW

/kun Kunming: 1080/1296 kHz

/lha Lhasa: 1323kHz



/nei Nei Minggu Aut. Reg.: (\*) 963 kHz  
 /xjg Xinjiang Uyghur Aut. Reg.: (\*) 1323 kHz  
 /xuw Xuanwei: 1188/1269 kHz 600 kW  
 (\*) Exact location unknown

SW (approximate transmitter numbers)

/be Beijing, 3 sites: Doudian (G.C. 39N38 116E05) 4x150, 6x500 kW; Matoucun 12x100 kW; Shuangqiao 8x100, 6x150 kW

/gem Golmud: 4x100 kW

/huh Hohhot (Bikeqi): 3x100 kW

/jin Jinhua: 3x500kW

/kas Kashgar (Saibagh): 4x100, 8x500 kW

/kun Kunming (Anning ): 4x100, 4x150, 4x500 kW

/lha Lhasa: 13x100 kW

/lin Lingshi: 6x100 kW(?)

/nnn Nanning: 2x15, 3x100, 1x150 kW #

/szg Shijiazhuang, two sites: Nanpozhuang G.C. : 2x500kW; Huikou: 6x100 kW

/ur Urumqi, Hutubi: 9x100, 8x500 kW

/xi Xi'an, three sites: Xianyang 4x150, 6x500 kW; Baoji, Sifangshan: 6x100 kW; Baoji, Xinjie 1x150 kW

(#) temporarily out of use

(info from 2020 to 2022, no reliable update possible - we)

**COLOMBIA** - 5909.952 kHz July 27 at 0641 UT, tropical music at S8/S9, better signal than usual from always off-frequency Alcaravan Radio. Brief burst of "running water" ute QRM. Manuel Mendez in Spain reports: "Alcaravan Radio 5910 kHz on air again after about 10 days out. Log in Oleiros, La Coruna, NoWe of Spain, Sangean ATS-909X, cable antenna, 8 meters.

5910 kHz Alcaravan Radio, Puerto Lleras, 0450-0526 UT on 27 July, religious and Latin American songs, Spanish, religious comments, Colombian songs "Llaneras". 25432."

However, I don't think it had been totally off. In regular bandscans I had been crossing a JBA offset carrier, but not logged. Now there is also a JBA carrier on 6010, probably Brasil rather than still inactive sibling station LV de tu Conciencia.

Ron Howard also replied: "Greetings, Manuel, from California. July 27, at 0742 & 0910 UT, heard a decent level carrier on 5910 kHz, but no audio at all; normally in the past I always had good audio here."

(Glenn Hauser-OK-USA, WOR Aug 3)

re COLOMBIA - and a tiny S=3-4 signal string seen and 'heard' on 5909.949 kHz at 02.33 UT on Aug 3rd.

[selected SDR options, span 12.5 kHz RBW 15.3 Hertz](wb df5sx, wwdxc BC-DX TopNews Aug 3)

**CUBA** - 6100 kHz July 27 at 0646 UT, undermodulated Spanish with humbuzzwhine, no doubt RHC where something's always wrong.

5025 kHz, July 27 at 0650 UT, S=9+20/30db of dead air except for some humbuzz, from R. Rebelde, something's always wrong at Radio David Crawford, FL replied to my previous reports, July 27 at 0156 UT:

"Tonight's treat is what sounds like video buzz, rather than the recently-typical Rebelde FM audio, on 5025 KhZ. And after the one reported active "sunset" session, HM01 has been quiet again since, at least for the local midday and sunset schedules. I have not checked the madrugada scheduled times and freqs."

Ron Howard, CA replies later on July 27: Cuba (5025 KhZ) noted at 0743 & 0909 UT, with strong carrier, along with a strong hum, but no audio. Ron"

(gh, WOR Aug 3)

11760 kHz July 28 at 0715 UT, overtime RHC Spanish S=9+10dB but JBM. Something's always wrong at RHC. It's the only log I make this late-night due to horrible S=9+10dB noise level all over the bands: suspect from neighbor and/or thru power lines. I may have to rely even more on remote receivers, but many of them also have 'line noise' problems. Abated by 15 UT enough to tell that propagation is now degraded.

15230 kHz July 28 at 2316 UT, RHC S=9/+10dB of dead air.

11760 kHz July 29 at 0704 UT, RHC extension still on, in Spanish, S=9/+10 and somewhat undermodulated. Also unusually with dirty parasitic spurs plus / minus 3 kHz.

6000 kHz July 31 at 0642 UT, RHC English JBM with humwhine, S=9+20/30dB.

11950 kHz July 31 at 2349 UT, S9/S4 of dead air from 'Mesa Redonda' alt. Spanish frequency; supposed to be // 6000 kHz, which at 2355 UT is DA or maybe JBM.

13650 kHz July 31 at 2347 UT, all-music CRI 'Portuguese' relay, now with dirty spurs about 2.5 kHz plus/minus.

11670 kHz August 1 at 0646 UT, tonight's extra RHC, Spanish, S=9+10/20dB and undermodulated; also with squeal and dirty spurs about plus/minus 3 kHz. Same symptom I logged July 29 at 0704 UT on 11760 kHz.

11760 kHz August 2 at 0629 UT, RHC Spanish prolongation here tonight, S=9+20dB and good modulation for a change, no spurs either.

(gh, WOR Aug 3)

CUBA and as usual in past months a reserve TX unit of RadioCuba in use on LOWER frequency side FLANK - likely - on 5024.995 kHz, so likely a tx unit replacement in use after the hurricane's damage. ?! at 02.38 UT S=6-7 here in southern Germany. No hum audio heard - so far. (wb)  
[selected SDR options, span 12.5 kHz RBW 15.3 Hertz]

**EGYPT** - 9884.961 kHz on July 11 at 2332UT, as scheduled, R.Cairo has moved from 9899.961 kHz by 2330 UT for Arabic to follow Portuguese toward South America and at exactly the same -19Hz offset fq, as UTWente displays both, but modulation now is even worse, only bits at peak spikes. There is also heavy lightning over Netherlands and this S=9+30/40dB bigsig is not enough to suppress it completely. Also an RTTY-like warble. Something continues egregious in Egypt.

9899.961 kHz on July 11 at 2248UT, extremely distorted talk at S=9+25/40dB into UTWente; intonation and occasional words sound Portuguese as scheduled from R. Cairo at 2215-2330 UT. Something's always egregious in Egypt. EiBi database list shows both CNR1 and RTI also on 9900 kHz at 2200-2400UT but not a trace of either vs this monstrosity. Cairo scheduled to follow with Arabic on 9885kHz at 2330-0045UT, Spanish on 9860 kHz at 0045-0200UT, all for South America. Why do they bother?

(gh, via NASWA Electronic Flashsheet #1109 July 16)

In den letzten Wochen konnte das deutschsprachige Programm von Radio Kairo tageweise um 1900 Uhr auf 9410 kHz empfangen werden. Auch wenn wegen der schlechten Modulation kaum etwas vom Programminhalt zu verstehen war, beweist das die weitere Existenz einer deutschsprachigen Redaktion von Radio Kairo.

(Bernd Seiser-D; Dr. Hansjoerg Biener-D, Bieners DX Digest column July 19)

**GUAM** - KTWR Agana (Merizo Guam) hat nach den Taifun-Schaeden vom Mai 2023 vier der fuef Antennen wieder betriebsbereit und am 7. Juli 2023 folgenden Sendeplan eingefuehrt:

1000-1133 Uhr 11965 kHz Maximalzeit fuer Indonesien

- 1000 Uhr Maduresisch, Sa Banyumasan, So Indonesisch
- 1015 Uhr Maduresisch, Sa Sundanesisch, So Balinesisch
- 1030 Uhr Sundanesisch, Sa -, So Indonesisch
- 1100 Uhr Englisch, Sa Malaiisch
- 1115 Uhr Mo-Fr Englisch

1045-1115 Uhr 15310 kHz Mongolisch, So ab 1100 Uhr

1115-1230 Uhr 12160 Maximalzeit fuer Ostasien

- 1115 Uhr Hui
- 1145 Uhr Hakka
- 1200 Uhr Mandarin
- 1215 Uhr Mo-Sa Nosu Yi

1215-1245 Uhr 9975 kHz So Japanisch

1130-1215 Uhr 9910 kHz Maximalzeit fuer Ostasien

- 1130 Uhr So Englisch
- 1145 Uhr So Mandarin
- 1200 Uhr So-Fr Mandarin

1200-1315 Uhr 12040 kHz Maximalzeit fuer Suedostasien

- 1200 Uhr Burmesisch, So ab 2015 Uhr
- 1230 Uhr Sgaw Karen, Sa Vietnamesisch
- 1245 Uhr Sgaw Karen, Sa Vietnamesisch, So Hmong Njua
- 1300 Uhr Sa Vietnamesisch. So Hmong Njua

1245-1300 Uhr 13660 kHz So Manipuri  
 1245-1315 Uhr 13740 kHz Maximalzeit fuer Suedasien  
 - 1245 Uhr Mo-Fr Englisch  
 - 1300 Uhr Hindi, Sa Desiya, So Bhatri  
 - 1308 Uhr Sa Desiya, So Bhatri  
 1300-1400 Uhr 9975 kHz Maximalzeit fuer Ostasien  
 - 1300 Uhr Mandarin  
 - 1335 Uhr Kantonesisch, Sa So Mandarin  
 - 1345 Uhr So Mandarin  
 1315-1515 Uhr 9320 kHz Koreanisch, Sa So ab 1345 Uhr  
 1400-1430 Uhr 13720 kHz Maximalzeit fuer Suedasien  
 - 1400 Uhr Mo Di Vasavi, Mi Marwari, Do Fr Mawachi, Sa Dhodia, So Haryanvi  
 - 1415 Uhr Sa Dzonkha  
 1415-1430 Uhr 11590 kHz Mo-Do Uigurisch  
 1445-1500 Uhr 11590 kHz Kasachisch  
 1500-1600 Uhr 9900 kHz Mo-Sa Koreanisch  
 1515-1545 Uhr 9870 kHz Sa-Mo Koreanisch

#### DRM mode

1100-1130 Uhr 12120 kHz Sa Englisch  
 1130-1200 Uhr 9910 kHz Sa Japanisch  
 1200-1230 Uhr 9910 kHz Sa Englisch  
 1215-1245 Uhr 9910 kHz Mo Mandarin  
 1500-1545 Uhr 15390 kHz So Englisch  
 1600-1630 Uhr 15390 kHz Di-Fr Englisch  
 1600-1630 Uhr 13670 kHz So indische Sprachen.  
 (Jose Jacob-IND, DX-India; via hjb, Bieners DX Digest column July 19)

**INDIA** - 15050 kHz AKASHVANI, {former called AIR, wb} 2330-2355 UT on 4 July. Akashvani in English on 15050 kHz with news from 2230{sic}-2340 UT. I thought they had completely dropped English on SW. ... At 2345 UT the Interval Signal and sign-on for Chinese was heard, SINPO 33233.  
 (Tony Pavick-BC-CAN, via NASWA Electronic Flashsheet #1109 July 16)

Akashvani hat Anfang August 2023 bei

<<https://prasarbharati.gov.in/wp-content/uploads/2023/08/External-Services.pdf>>

folgenden Auslandssendeplan veroeffentlicht:

0100-0130 UT 7380 kHz BGL 500 kW, 325deg fuer Pakistan: Sindhi  
 0100-0230 UT 11570 kHz DEL 100 kW, 102deg fuer Nordindien/Tibet: Tibetisch  
 0130-0230 UT 15050 kHz BGL 500 kW, 120deg fuer Suedostasien: Indonesisch  
 0145-0315 UT 15410 kHz BGL 500 kW, 35deg fuer Nordindien/Nepal:  
 Nepali aber 0230 Uhr Hindi-Nx. 0245-0300 Uhr nx in Englisch.  
 0300-0430 UT 11560 kHz DEL 100 kW, 282deg fuer Pakistan: Baluchi  
 0315-0415 UT 15410 kHz BGL 500 kW, 90deg fuer Suedostasien: Burmesisch  
 0400-0630 UT 15030 kHz BGL 500 kW, 300deg fuer Mittleren und Nahen Osten:  
 Farsi. 0530 Uhr Arabisch.  
 0430-0600 UT 9950 kHz DEL 100 kW, 282deg  
 11620 kHz BGL 500 kW, 325deg fuer Afghanistan: Dari  
 0430-0600 UT 11560 kHz DEL 100 kW, 282deg  
 15185 kHz BGL 500 kW, 325deg fuer Pakistan/Afghanistan Pashto  
 0900-1030 UT 9910 kHz  
 11560 kHz DEL 100 kW, 102deg  
 15030 kHz BGL 500 kW, 35deg fuer Nordindien/Nepal: Nepali.  
 1030-1200 UT 15030 kHz BGL 500 kW, 60deg fuer China: Chinesisch  
 1045-1215 UT 9940 kHz  
 11560 kHz DEL 100 kW, 102deg fuer Nordindien/Tibet: Tibetisch  
 1215-1315 UT 15030 kHz BGL 500 kW, 240deg fuer Ostafrika: KiSwahili  
 1230-1330 UT 9950 kHz DEL 100 kW, 282deg fuer Pakistan: Baluchi  
 1230-1400 UT 11560 kHz BGL 500 kW, 325deg fuer Pakistan/Afghanistan Pashto  
 1330-1500 UT 9950 kHz BGL 500 kW, 325deg fuer Afghanistan: Dari  
 1600-1930 UT 9620 kHz BGL 500 kW, 300deg fuer Mittleren und Nahen Osten:  
 Farsi. 1730 Uhr Arabisch.

1930-2030 UT 9620 kHz BGL 500 kW, 300deg fuer Europa: Franzoesisch  
 2345-0115 UT 15050 kHz BGL 500 kW, 60deg fuer China: Chinesisch,  
 im Juli gelegentlich um 2330 Uhr mit englischen Nachrichten beobachtet.

Eingesetzt werden Sender in Bengaluru und Delhi Kingsway. Viele Frequenzen sind auch in Europa zu hoeren. Dabei faellt dann auf, dass der vorgeschriebene Name Akashvani noch nicht durchgehend anstatt von 'All India Radio' verwendet wird. Z.B. wurde folgende Ansage gehoert: "This is the Swahili Service of All India Radio on 15030 kHz" Englisch ist nicht mehr offiziell im Auslandssendeplan, aber teils regulaer, teils zufaellig trotzdem immer wieder zu beobachten. Chinesisch und Tibetisch gelten als mit Stoersendungen belegt. Im Juli hoerte das sich aber nicht immer so an. (via hjb, Bieners DX Digest column Aug 6)

**JAPAN** - 8006 kHz HFD Radio Station JG2XA at 1410 UT on July 15. CW IDs now given every 10 minutes (formerly given every 2 minutes). 5006 kHz remains with open carrier and no IDs yet. 200W signal strength remains fairly decent.

address:

Keisuke HOSOKAWA, Ph.D.  
 Department of Communication Engineering and Informatics,  
 University of Electro-Communications  
 1-5-1, Chofugaoka  
 Chofu, Tokyo 182-8585  
 JAPAN, East Asia.

E-mail: <keisuke.hosokawa-at- uec.ac.jp>

WWW website: <<http://gwave.cei.uec.ac.jp/~hosokawa/index.html>>

(Ron Howard-CA-USA, WOR & direct July 16)

**JAPAN / TAIWAN / UZBEKISTAN** - Shiokaze/Sea Breeze frequency changes of July 27 -"Shiokaze" from 1300 UT, the annual frequency change is being done from today July 27. This is a change since June 7th. On Thursdays, both the first half and the second half are broadcast in Korean. 5920 kHz is a self-destruct to the frequency that super jamming is out.

Yamata's radio waves are strong and almost eliminate jamming, but it is Yamata transmission that wants to come out to this frequency more than anything else. 6090 kHz does not know the interference.

1325:25 UT "Voices from the Japanese government to families" is a message to Ms. Kyoko Matsumoto, and 1355:30 UT is a message to Mr. Kaoru Matsuki.

Shiokaze, July 27 2023 ~

1300-1400 5920, 6090

1405-1435 5980, 7325

1600-1700 5935, 6165

1705-1805 5955, 7435

9455 kHz is good. 1330's "Furusato no Kaze" is 15475, 9705 and 9455 kHz. At this time, the same programs are being broadcast every day. 1405's UT "Shiokaze" appeared at 5980 and 7325kHz. Both waves have no interference and the reception condition is good. But 7325 kHz is almost crushed by CRI starting at 1330 UT.

1430's UT "Furusato no Kaze" is strong at 15475 kHz transmitted from Tashkent-UZB, and 9705 and 9685 kHz transmitted from Taiwan. A nostalgic Japanese song is "Naishobanashi". The commentary on the abduction issue is about Mr. Shuichi Ichikawa. On August 12, 1978, he was abducted from Hioki County, Kagoshima Prefecture, along with Rumiko Masumoto, who was 23 at the time. In 2002, North Korea admitted to the abduction, married on July 24, 1979, and died on September 4. However, Ichikawa, who could not swim, drowned in a river in early winter, and suddenly issued a death notice in 2002. Created in a hurry in September 2009, there is no objective fact and it is not a credible content.

For North Korea, this is also an inconvenient abduction case unless they die. "Furusato no Koe" is a message recorded over the phone in June 2020 from his older brother Kenichi Ichikawa to Shuichi Ichikawa. Next is the message recorded in February 2019. And a message recorded in June 2020 from sister Ryuko Ichikawa. Today's song is the 1968 hit "Flower Necklace" by The Tigers. This program is the same as April 13, 23, May 3, 13, 25, June 4, 14, 25, July 5, 16, 2023.

1600's UT "Shiokaze" came out to 5935 and 6165 kHz. Both of these time waves are strong. S=9+50dB is the input.

Therefore, the interference of the same wave is completely unknown. It is the same Korean language broadcast as 1300 UT.

1705's UT "Shiokaze" is 5955 and 7435kHz. Both waves are strong. However, 7435 kHz has a time when the weather fax is out, and there is a lot of interference. The first half is the same as 1405 UT, and the second half has 1300 UT Korean programs that aired last week. (Hiroshi (Google translation))  
<<http://hiroshi.mediakat-blog.jp/e152111.html>> via Ron Howard-CA-USA, WOR July 27)

**MADAGASCAR** - 21560 kHz BBC, Talata, via MGLOB Talata Volonondry Madagascar relay facility. 0650 UT English WS to EaAF. Good signal (around S8) via the short path off the back of the Talata array. A 30-second break in transmission at 0658 UT. Then back at 0659 UT with a somewhat stronger signal (S=9+10dB). This suggests there is perhaps a change in the 310 deg. beam heading for the 0700 UT service, although no change is indicated in the usual lists. 0700 UT also sees the s/on of the service on 21630 kHz, beaming 260 deg to SoAF. But with Mt Evelyn being decidedly off the side of that Talata beam heading, that channel is much weaker. Sunset here is 0726 UTC (5:26 pm) today, and both frequencies take a dive in signal strength by 0740 UT. July 24.  
(Rob Wagner VK3BVW, Mount Evelyn-Vic-AUS, ADXN of ARDXC; direct Aug 1)

12095 kHz BBCWS (Talata) via MGLOB Talata Volonondry Madagascar relay facility, 0408-0435 UT on 26 July, En. Newsday. Report about the effect of Russia breaking off the deal to allow shipments of Ukrainian grain. Sports score at 0416 UT. Business news at 0418 UT. Signal remained fairly good though fluttery until about 0435 UT. SINPO 44333 (Tony Pavick-BC-CAN, via NASWA Electronic Flashsheet #1111 July 30)

**MALAYSIA** - 11665 kHz RTM Wai FM, via Kajang site heard at 1130 UT on July 10. Brief instrumental music and followed at 1131UT by a woman speaking in listed Malay. Mostly poor.  
(Bob Brossell, Pewaukee-WI-USA, via NASWA Electronic Flashsheet #1109 July 16)

**MALI** - Nach ziemlich genau drei Monaten konnte der spanische Kurzwellenexperte Manuel Mendez Radio Mali Bamako site-I am 27. Juni 2023 wieder auf 9635 kHz empfangen. Die Frequenz wird als Tageswelle 0800-1800 Uhr UT eingesetzt. Davor 0600-0800 und danach 1800-2400 Uhr wird auf 5995 kHz gesendet, das auch in der Zeit der Abwesenheit von 9635 kHz in Europa gehoert wurde. Vom Berichterstatter auch im Juni und Juli mehrfach am Abend. 9635 kHz konnte er nicht beobachten.  
(Manuel Mendez-ESP WOR; Dr.Hansjoerg Biener-D, B. DX Digest column Jul 19)

*The second relais QRG of CRI via Mali could be already down (we)*

**MYANMAR** - THAZIN RADIO - MMR Thazin Radio from Puyin U Lwin northern site some 575 kilometers north of Yangon, operated by Tatmadaw [Military] found on 7345 kHz around 11.00 past 11.30 UT in native languages mixing with CRI co-channel on 18 Aug 2023. Thanks to a listening tip from Pradip Kundu. On MW Thazin Radio Puyin U Lwin operates on 639 kHz.  
(Sarath Weerakoon-CLN 4S5SL, wwdxc BC-DX TopNews Aug 18)

**NEW ZEALAND** - 11725 kHz Radio New Zealand International, Rangitaiki, 1947-1958\* UT on Aug 5, English, comments, ID. "This is Radio New Zealand International now closing this frequency ...", "This is New Zealand", interval signal, close. 35433. (Manuel Mendez-ESP, hcdx Aug 7)

**OMAN** - Im Vorfeld des BBC Sendeendes aus Singapur Kranji site wurden auch auf Frequenzen aus A Seela Hinweise auf BBC Abschaltungen gehoert. Wie sich am 16. Juli 2023 zeigte, waren diese eingestreuete Ansagen keine Irrlaeuer.

Der BBC World Service in Englisch hat jedenfalls auf der Kurzwelle auch das Zielgebiet Naher/Mittlerer Osten (0300-0500, 1700-1900 Uhr) aufgegeben.

Damit verbleiben folgende Sendungen in Englisch:

0000-0100 Uhr	5945 kHz	(250kW, 63 deg)	fuer Suedasien
0100-0200 Uhr	7325 kHz	(250kW, 63 deg)	fuer Suedasien
0759-0900 Uhr	21660 kHz	(100kW, 63 deg)	DRM fuer Asien nicht auf Sendung
1200-1400 Uhr	15310 kHz	(250kW, 63 deg)	fuer Suedasien
1200-1300 Uhr	17790 kHz	(250kW, 80 deg)	fuer Suedasien
1300-1400 Uhr	11685 kHz	(250kW, 68 deg)	fuer Suedasien
1500-1600 Uhr	11800 kHz	(250kW, 225 deg)	fuer Ostafrika
1600-1700 Uhr	11700 kHz	(250kW, 225 deg)	fuer Suedafrika

Das WRTH-Update erwies sich hier als zuverlässiger als die Frequenzliste bei <https://new.hfcc.org>  
Obwohl einige Frequenzen mit Juli markiert waren, entsprachen die dortigen Angaben am 16. Juli 2023 fast ganz dem ursprünglichen Sendepfad.  
(Dr. Hansjoerg Biener-D, Bieners DX Digest column July 19)

**PERU** - 4824.6 kHz tent. La Voz de la Selva. - For several days now I have been tuned in between 2300 UT and approx. 0100 UTC a signal that would correspond to the radio station 'La Voz de la Selva' from Iquitos in Peru.

The audio of the signal is very low and has not allowed me to confirm that it is this station vs. the signal is very low and has not allowed me to confirm that it is this station against its online signal. Although the signal the audio seems to be inside an "underground drawer" reminds me of the current situation with the signal from Radio Pio XII 5952.4 kHz which is broadcasting on Saturdays and even though the signal the signal is good but the audio does not get through.

The colleague Cesar Perez Dioses from Chimbote in Peru, has informed me that if it is 'Radio La Voz de la Selva' which is broadcasting irregularly, according to another colleague in the city of Iquitos in Peru. The last records of this radio station in my DX logbook date from the month of May 2017, when it was identified as "LVS Digital 93.9".

The truth is that this signal is not even a shadow of what it was in the 90's when it was possible without difficulty with a tape recorder and its telescopic antenna. Today with SDR and a suitable antenna it is just a murmur ... Automatic translated Spanish into British English.

(Rafael Rodriguez R.; Bogota D.C. - Colombia, via gh, WOR July 22)

**PHILIPPINES** - 9410 kHz BBC - via USAGM Tinang relay site. S/on after test tone at 1000 UT English to SoEaAS and PNG. The first day from Tinang-PHL schedule on this freq for this service (ex Kranji-SNG). About 1 S-point stronger than Kranji-SNG. July 16.

(Rob Wagner VK3BVW, Mount Evelyn-Vic-AUS; NASWA Electronic Flashsheet #1109 July 16)

BBC 9410 kHz via USAGM Tinang PHL relay. I've been checking 9410 kHz around 1100 UT the past few days on various Kiwi\_net SDRs in East and Southeast Asia, and reception of this frequency has been quite poor in the target area. If this is really Tinang-PHL it is with far less than the 250 kW registered with the HFCC.org, or is from a different, lower powered site.

Oddly, the transmissions on 9440 kHz at 2200 UT and 11825 kHz at 2300 UT via Tinang-PHL come in very well on those same SDRs. The BBC has still not corrected its frequencies webpage, which continues to show some nonexistent transmissions, and is missing the 2200 UT broadcast on 9440. They also haven't bothered to update the bar graph frequency charts, which still have the now defunct Singapore output.

(Stephen Luce-TX-USA, WOR July 21)

**ROMANIA** - Two Radio Romania international transmitters shut down due to budget cuts.

Many thanks to SWLing Post contributor, Paul Walker, who shares the following news from Radio Romania International:

*Two out of the five transmitters broadcasting RRI's programmes are temporarily suspended as of 1 August*

Dear friends, the Radio Romania Board of Administrators decided to temporarily suspend the use of 2 out of the 5 Radiocom shortwave transmitters that ensure the broadcast of Radio Romania International programmes, because of budget cuts. As of August 1, our programmes are aired via one transmitter in ?ig?ne?ti, one in S?ftica (both of them near Bucharest) and one in Galbeni (east). As soon as the budget of the institution is restored, we will resume broadcasts on all 5 transmitters.

The RRI programmes in Romanian, English, French, German, Spanish, Russian, Arabic, Chinese and Hebrew are affected. All of them may be received on only one frequency instead of 2, as of August 1, 2023. The frequencies as well as any other prospective changes operated by Radiocom further to reception monitoring and to your feedback on reception quality will be announced in our broadcasts, on our web page and on Facebook.

Budget restrictions also prompted a reduction of the night time power of medium wave transmitters that broadcast Radio Romania News and Current Affairs programmes and of some regional stations.

We invite you to follow RRI's programmes online at <http://www.rri.ro> (including on demand), on SoundCloud, on Android and iOS apps, via TuneIn and via satellite. You can find more details on our home page. You can also follow us on Facebook, Twitter, Instagram, YouTube, LinkedIn and Spotify.

(SWLing Post, F\_Book, via BrDXC-UK iogr Aug 1)

The Radio Romania International website has this schedule for English broadcasts:

#### WESTERN EUROPE

05.30-06.00 11960  
 11.00-12.00 17630  
 17.00-18.00 13750 (DRM)  
 20.30-21.00 11975 (DRM)  
 22.00-23.00 11800

#### AFRICA

11.00-12.00 17670

#### NORTH AMERICA (East Coast)

20.30-21.00 13650  
 00.00-01.00 11620

#### NORTH AMERICA (West Coast)

03.00-04.00 9850

#### JAPAN

22.00-23.00 9790

#### AUSTRALIA

05.30-06.00 21550

#### INDIA

03.00-04.00 15330 (DRM)  
 (Mike Barraclough-UK, BrDXC-UK iogr August 1)

RRI Bucharest in A23 via Tiganesti, Saftica and Galbeni

Here is the current RRI schedule:

<<http://ab27.bplaced.net/rri.pdf>>

(Alexander Busneag-D, Aug 2)

What I did not see in the RRI - English version is that the power of the Romania's medium wave stations is to be reduced to half (this is what the RRI Romanian website version says).

(Erich Bergmann-D, via wwdxc BC-DX TopNews Aug 2)

kHz	UTC	zones	loc	kW	deg	ant	SMTWTFs	N=DRM	language
9550	0000	0100	8	TIG	300	307	288	1234567	D Eng
11620	0000	0100	8	TIG	300	307	288	1234567	D Eng *
9730	0000	0200	8	GAL	300	310	286	1234567	D Ron * (!)
11945	0000	0200	8	GAL	300	310	286	1234567	D Ron
9550	0100	0200	4,8	TIG	300	307	288	1234567	D Fra
11620	0100	0200	4,8	TIG	300	307	288	1234567	D Fra *
9700	0200	0300	14	GAL	300	245	286	1234567	D Spa *
11780	0200	0300	14	GAL	300	245	286	1234567	D Spa
15130	0200	0300	10	TIG	300	247	288	1234567	D Spa
17760	0200	0300	10	TIG	300	247	288	1234567	D Spa *
9850	0300	0400	6	TIG	300	337	288	1234567	D Eng *
11620	0300	0400	6	TIG	300	337	288	1234567	D Eng
15330	0300	0400	41	GAL	90	100	286	1234567	N Eng *
S=9+10dB DRM signal in SoGermany.									
17790	0300	0400	41	GAL	300	100	286	1234567	D Eng
15220	0400	0430	43,44	TIG	90	67	288	1234567	N Chi
not in DRM mode, but instead on AM mode:									
15220	0400	0430	43,44	TIG	300	67	288	1234567	D Chi *
17760	0400	0430	43,44	TIG	300	67	288	1234567	D Chi
9500	0400	0500	27SE	GAL	300	285	206	1234567	D Ron
11740	0400	0500	27SE	GAL	300	285	206	1234567	D Ron *

9510	0430	0500	29	TIG	300	37	205	1234567	D	Rus	
11800	0430	0500	29	TIG	90	37	205	1234567	N	Rus	
not in DRM mode, but instead on AM mode:											
11800	0430	0500	29	TIG	300	37	205	1234567	D	Rus	*
9500	0500	0530	27SE	GAL	300	285	206	1234567	D	Fra	
11740	0500	0530	27SE	GAL	90	285	206	1234567	N	Fra	*
17520	0500	0530	47,52	TIG	300	187	288	1234567	D	Fra	
21550	0500	0530	47,52	TIG	300	187	288	1234567	D	Fra	*
9700	0530	0600	27N	TIG	300	307	288	1234567	D	Eng	
11960	0530	0600	27N	GAL	90	300	206	1234567	N	Eng	*
17760	0530	0600	55,58,59	GAL	300	100	286	1234567	D	Eng	
21550	0530	0600	55,58,59	TIG	300	97	288	1234567	D	Eng	*
9700	0600	0630	28NW	TIG	300	307	205	1234567	D	Deu	
11620	0600	0630	28NW	TIG	90	307	205	1234567	N	Deu	
not in DRM mode, but instead on AM mode:											
11620	0600	0630	28NW	TIG	300	307	205	1234567	D	Deu	*
11830	0630	0700	37	GAL	300	245	286	1234567	D	Ara	
15130	0630	0700	37	GAL	300	245	286	1234567	D	Ara	*
15200	0630	0700	39NW	TIG	300	142	288	1234567	D	Ara	
17630	0630	0700	39NW	TIG	300	142	288	1234567	D	Ara	*
11790	0700	0800	39NW	GAL	300	140	205	1	D	Ron	*
13750	0700	0800	39NW	TIG	300	142	208	1	D	Ron	*
15200	0700	0800	39NW	GAL	300	110	286	1	D	Ron	
17780	0700	0800	39NW	TIG	300	112	286	1	D	Ron	
11650	0800	0900	38E	GAL	300	165	286	1	D	Ron	*
13790	0800	0900	39NW	TIG	300	142	205	1	D	Ron	*
15170	0800	0900	39NW	TIG	300	142	288	1	D	Ron	
15200	0800	0900	38E	GAL	300	165	286	1	D	Ron	
11650	0900	1000	27SE	GAL	300	285	286	1	D	Ron	*
15130	0900	1000	37	TIG	300	247	288	1	D	Ron	
15150	0900	1000	27SE	GAL	300	285	206	1	D	Ron	
17630	0900	1000	37	TIG	300	247	288	1	D	Ron	*
11650	1000	1100	27SE	GAL	300	285	286	1234567	D	Fra	*
15130	1000	1100	37	TIG	300	247	288	1234567	D	Fra	
15150	1000	1100	27SE	GAL	300	285	206	1234567	D	Fra	
17630	1000	1100	37	TIG	300	247	288	1234567	D	Fra	*
15130	1100	1200	27N	TIG	300	307	288	1234567	D	Eng	
15320	1100	1200	48W	GAL	300	165	286	1234567	D	Eng	
17630	1100	1200	27N	TIG	300	307	288	1234567	D	Eng	*
17670	1100	1200	48W	GAL	300	165	286	1234567	D	Eng	*
11700	1200	1230	39NW	GAL	300	140	286	1234567	D	Ara	*
15130	1200	1230	39NW	TIG	300	142	288	1234567	D	Ara	
15320	1200	1230	37	GAL	300	245	286	1234567	D	Ara	
17780	1200	1230	37	TIG	300	247	288	1234567	D	Ara	*
9490	1200	1300	28NW	SAF	100	300	812	1234567	D	Ron	*
15160	1230	1300	43,44	TIG	300	67	288	1234567	D	Chi	
17760	1230	1300	43,44	TIG	300	67	288	1234567	D	Chi	*
11940	1300	1400	31S	TIG	300	52	288	1234567	D	Rus	
13610	1300	1400	31S	TIG	300	52	288	1234567	D	Rus	*
11950	1300	1500	27SE	GAL	300	285	206	1234567	D	Ron	*
15340	1300	1500	27SE	GAL	300	285	286	1234567	D	Ron	
9520	1400	1430	28SW	SAF	100	270	812	1234567	D	Ita	*
9600	1400	1500	28NW	TIG	300	307	205	1234567	D	Deu	*
11880	1400	1500	28NW	TIG	300	307	205	1234567	D	Deu	
5910	1430	1500	28SW	SAF	100	240	812	1234567	D	Rup	*
5910	1500	1530	29SW	SAF	100	30	812	1234567	D	Ukr	*
11810	1500	1530	29	TIG	300	37	205	1234567	D	Rus	
13660	1500	1530	29	TIG	90	37	288	1234567	N	Rus	
not in DRM mode, but instead on AM mode:											
13660	1500	1530	29	TIG	300	37	288	1234567	D	Rus	*
5910	1530	1600	28S	SAF	100	270	812	1234567	D	Srp	*
11830	1530	1600	37	GAL	300	245	286	1234567	D	Ara	*
15130	1530	1600	37	GAL	300	245	286	1234567	D	Ara	



15160	1530	1600	39NW	TIG	300	142	288	1234567	D	Ara	
17780	1530	1600	39NW	TIG	300	142	288	1234567	D	Ara	*
5910	1600	1630	28SW	SAF	100	270	812	1234567	D	Ita	*
9500	1600	1700	27SE	GAL	300	285	206	1234567	D	Fra	
11620	1600	1700	39NW	TIG	300	142	288	1234567	D	Ron	*
11975	1600	1700	27SE	GAL	300	285	286	1234567	D	Fra	*
15160	1600	1700	39NW	TIG	300	142	288	1234567	D	Ron	
5910	1630	1700	28SW	SAF	100	240	812	1234567	D	Rup	*
5910	1700	1730	29SW	SAF	100	30	812	1234567	D	Ukr	*
11975	1700	1800	27SE	GAL	300	285	206	1234567	D	Ron	*
13750	1700	1800	27N	TIG	90	307	288	1234567	N	Eng	*
proper S=9+35dB DRM signal in SoGermany.											
15180	1700	1800	27N	TIG	300	307	288	1234567	D	Eng	
15200	1700	1800	27SE	GAL	300	285	286	1234567	D	Ron	
5910	1730	1800	28S	SAF	100	270	812	1234567	D	Srp	*
5910	1800	1830	28SW	SAF	30	270	812	1234567	N	Ita	*
7245	1800	1900	28NW	TIG	90	307	205	1234567	N	Deu	*
proper S=9+35dB DRM signal in SoGermany.											
9570	1800	1900	28NW	TIG	300	307	205	1234567	D	Deu	
11975	1800	1900	27SE	GAL	300	285	206	1234567	D	Ron	*
15200	1800	1900	27SE	GAL	300	285	286	1234567	D	Ron	
5910	1830	1900	28SW	SAF	100	240	812	1234567	D	Rup	*
5910	1900	1930	29SW	SAF	100	30	812	1234567	D	Ukr	*
9610	1900	2000	37N	TIG	300	262	288	1234567	D	Spa	
11850	1900	2000	37N	TIG	300	262	288	1234567	D	Spa	*
11975	1900	2000	27SE	GAL	300	285	206	1234567	D	Ron	*
15200	1900	2000	27SE	GAL	300	285	286	1234567	D	Ron	
5910	1930	2000	28S	SAF	100	270	812	1234567	D	Srp	*
9575	2000	2030	27SE	GAL	300	285	206	1234567	D	Fra	
11975	2000	2030	27SE	GAL	90	285	206	1234567	N	Fra	*
S=9+55dB DRM signal in Germany. POWERHOUSE. til 20.26:00 UT Switch off.											
9740	2030	2100	27N	GAL	300	300	206	1234567	D	Eng	
11850	2030	2100	8	TIG	300	307	288	1234567	D	Eng	
11975	2030	2100	27N	GAL	90	300	206	1234567	N	Eng	*
S=9+60dB DRM signal in Germany. POWERHOUSE, high-end scale !!											
13650	2030	2100	8	TIG	300	307	288	1234567	D	Eng	*
13650	2100	2200	14	TIG	90	247	288	1234567	N	Spa	*
proper S=9+35dB DRM signal in Germany.											
15170	2100	2200	14	TIG	300	247	288	1234567	D	Spa	
9740	2200	2300	27N	GAL	300	300	206	1234567	D	Eng	
9790	2200	2300	45N	TIG	300	52	288	1234567	D	Eng	*
11650	2200	2300	45N	TIG	300	52	288	1234567	D	Eng	
11800	2200	2300	27N	GAL	300	300	206	1234567	D	Eng	*
9760	2300	2400	12N	GAL	300	280	286	1234567	D	Spa	
11650	2300	2400	14	TIG	300	247	288	1234567	D	Spa	
11800	2300	2400	12N	GAL	300	280	286	1234567	D	Spa	*
13660	2300	2400	14	TIG	300	247	288	1234567	D	Spa	*

(hfcc.org of August 02;

\* scheduled and partly traced on monitor Aug 1 and 2, wb.)

RRI Romanian at 0000-0200 UT 9730 kHz (GALbeni site 300 kW, 310 degr), not 11945 kHz confirmed.  
(Dr. Hansjoerg Biener-D, via wwdxc BC-DX TopNews Aug 3)

**SLOVAKIA** - Radio Slovakia International feiert in diesem Jahr den 30. Geburtstag des Senders. Aus diesem Anlaß wurde eine Serie produziert unter dem Titel "30 Jahre RSI und Auslandsradio weltweit". Die Projekt-Serie soll ein paar Streiflichter auf verschiedene deutschsprachige Auslandsradiosender weltweit werfen - sowohl in der Geschichte als auch in der Gegenwart. Alle Sendungen aus dieser Serie können auf der Webseite von Radio Slovakia International <<https://dersi.rtvs.sk/clanky/323864/zum-30-rsi-jubilaum-2023-deutschsprachige-auslandssender-weltweit>> gehört werden. (Bernd Seiser-D)

**SOLOMON ISLANDS** - 5020 kHz SIBC, 1206 UT to past 1410+ UT, July 29. No jamming today; heard well past the normal 1200\* UT closing; all non-stop island songs, except at 1231 UT heard a definite announcer, so suspect was

SIBC programming and not a Wantok FM relay; mostly poor reception; propagation seemed less than ideal today. Glenn, I cannot remember the last time I heard SIBC on 9545 kHz, but many years ago I had good reception there:  
<<https://app.box.com/s/in102j2pim9w69zrcdn6>>  
(Ron Howard-CA-USA, WOR and direct July 29)

5020 kHz SIBC Honiara, on Aug 2 with another day with greatly extended broadcast; 1240-1300 UT and still on after 1355+ UT; C&W and pop songs; The Allman Brothers Band - "Ramblin' Man," etc.; I enjoy these extended programs as the reception after their normal closing time of 1200\* UT, is so much better for me, as today my local sunrise was at 1314 UT. (Ron Howard-CA-USA, via wwdxc BC-DX TopNews Aug 3)

**SPAIN** - 11670 kHz REE Noblejas, at 2245z on July 4. HFCC lists in French at this time but with such a poor signal I couldn't be certain. 11670 kHz targets north and west Africa with 200 kW at 161 degrees using a 4 x 3 x 0.8 curtain (a higher angle of radiation than the arrays to the Americas). Since I'm way off the side, this frequency is always the weakest for me (from Spain) no matter what time of day. Noblejas to central Texas is about 5000 miles at 297 degrees.

15520 kHz REE via Nobeljas site, 1630z on July 16 in Spanish. 200 kW aimed at the Near and Middle East at an azimuth of 110 degr using a 4 x 3 x 0.8 curtain (with a higher angle of radiation than the arrays to the Americas). I usually receive 15520 kHz better than 17715 and 11670 kHz since the back of the beam seems to radiate better than the sides. Noblejas to central Texas is about 5000 miles at 297 degr azi.  
(Jerry Lenamon-TX-USA, via NASWA Electronic Flashsheet #1109 July 16)

17715v kHz REE Nobeljas, 0200z, July 13, in Spanish. 200 kW azimuth 230 degr, using a 4 x 4 x 1.0 curtain as it closed down for the day. This frequency was // to 17855 kHz but much weaker for me. The 230 degrees beam centers on Brazil and the more southerly South American countries. FWIW, Argentina and Chile are their most distant target areas.

Noblejas site does have a 260 degrees beam to northern South America but apparently the combo of 230 degr to the south and 290 degr to the north serves the purpose. Noblejas-ESP to central Texas is about 5000 miles at 297 degr.  
(Jerry Lenamon-TX-USA, via NASWA Electronic Flashsheet #1109 July 16)

17855 kHz REE Noblejas, 0200z on July 13, in Spanish to Central and North America. 200 kW 290degr azimuth using a 4 x 4 x 1.0 curtain, as it closed down for the day. The North American beam at 290 degr centers on Mexico. My QTH in central Texas is at 297degr from Noblejas and is only 7 degr off the center making this my usual best choice for Spain. My local sunset this evening was at 0135z but 16mb was still propagating very well. I was surprised to see that, when looking at a day/night map, it showed the path at 0200 UT has various stages of twilight, more like a gray line than darkness. See this website for the map:  
<<https://www.timeanddate.com/worldclock/sunearth.html?iso=20230713T0200>>  
Noblejas to central Texas is about 5000 miles.  
(Jerry Lenamon-TX-USA, via NASWA Electronic Flashsheet #1109 July 16)

**SRI LANKA** - The international service of the Sri Lanka Broadcasting Corporation (SLBC) recently doubled its Tamil Service airtime to two hours, on 873 kHz AM (medium wave) from Puttalam transmitter. The new schedule is 0130-0330 UTC. This is partly in response to individual efforts of listeners, many in the southern part of India, in Bengaluru.

Introducing this change, Colombo International Radio also announced that shortly they are going to use DRM on 1548 kHz {via former DWL bcast center - now SLBC Trincomalee TX site}. This will be done by using the old transmitter of Deutsche Welle located in the north of Sri Lanka at Trincomalee.

More at:

<<https://radioinfo.asia/news/sri-lanka-broadcastingcorporation-goes-drm-following-indian-listeners-request/>>  
(RadioInfo Asia 19 June via Ydun's MW Info; NZ DX Times items, Aug 2023)

**THAILAND** - 9385 kHz new fq R. Thailand, Ban Dung relay of USAGM Udorn Thani site. \*1200-1400\* UT Opening with English, then 1230 UT Vietnamese, 1245 UT Mandarin, 1300 UT Japanese, 1315 UT Malay and 1330 UT English.

The first day (July 21) on this NF (ex 9940 kHz). Finally moved away from 9940 kHz to avoid AIR India (until 1215 UT) and Nippon no Kaze (1300-1330 UT). Seems to be a good choice as it was heard with a solid signal here at Mount Evelyn and very strong via online SDRs throughout SoEaAS.  
(Rob Wagner VK3BVW, Mount Evelyn-Vic-AUS, ADXN of ARDXC; direct Aug 1)

13750 kHz R. Thailand, Ban Dung relay of USAGM Udorn Thani site. S/on 0200 UT for English service. NF (ex 15590 kHz). Fair signal with moderate QRM. Poor choice as the slot is already occupied by VoA Deewa, also from Ban Dung ! What's going on there? Went back to 15590 kHz from July 5.

(Rob Wagner VK3BVW, Mount Evelyn-Vic-AUS, ADXN of ARDXC; direct Aug 1)

15590 kHz R. Thailand, Ban Dung relay of USAGM Udon Thani site. 0000-0030 English. Back here after a failed attempt to 13750 kHz. Good signal. Also noted for the 0200 UT service. Jul 5. And again on July 10 at 0200 UT, but some issues with the audio cutting out and in every few seconds. I gave up after 15 min of this! It was unlistenable ! Was anyone at the transmitter site monitoring this ?

(Rob Wagner VK3BVW, Mount Evelyn-Vic-AUS, ADXN of ARDXC; direct Aug 1)

**UNITED KINGDOM** - Die BBC hat laut <<https://new.hfcc.org>> mit dem 7. Juli 2023 (\*)

folgenden durchgehoerten Sendeplan aus ENC Woofferton site:

\*0459-0600: 5875 (ex 3955) kHz (100 kW, 78 deg) Englisch  
 0500-0600: 15490 kHz (125 kW, 158 deg) Englisch  
 \*0529-0600: 12065 kHz (250 kW, 160 deg) Hausa  
 \*0600-0629: 13810 kHz (125 kW, 180 deg) Franzoesisch  
 1800-1900: 17640 kHz (125 kW, 165 deg) Englisch  
 1930-2000: 17640 kHz (125 kW, 165 deg) Hausa, Fr bis 2030 Uhr

(hjb, Bieners DX Digest column July 19deg)

My BBCWS colleagues seek reports of interference to any WS SW frequencies, particularly TAC 7425 (0000-0200 UT), OMA 5945 (0000-0100 UT), TAC 9495 (0100-0200 UT), UAE 15310 (1200-1400 UT), OMA 17790 (1200-1300 UT), OMA 11870 (1300-1400 UT).

5945	0000	0100	41,42SW	BBC	W	ENC	A'See1a	OMA	21N58	059E27	63	250	ENASS
7425	0000	0100	41,42SW	BBC	W	ENC	Tashkent	UZB	41N19	069E17	131	100	ENASS
9495	0100	0200	41,42SW	BBC	W	ENC	Tashkent	UZB	41N19	069E17	131	100	ENASS
17790	1200	1300	41,42SW	BBC	W	ENC	A'See1a	OMA	21N58	059E27	68	250	ENASS
15310	1300	1400	41,42SW	BBC	W	ENC	Dhabayya	UAE	24N11	054E14	85	250	ENASS
11870	1300	1400	41,42SW	BBC	W	ENC	A'See1a	OMA	21N58	059E27	60	250	ENASS

Please send reports to

<[worldservice.letters-at-bbc.co.uk](mailto:worldservice.letters-at-bbc.co.uk)> Put "WS reception checks" in the Subject line. Thanks!

(Chris Greenway-UK, WOR Aug 3)

Yoruba Nation Radio / TV. From Yoruba Nation Facebook page: "On the 5th of August 2023, Yoruba Nation Shortwave Radio will start Broadcasting live. Share this page with Yoruba citizens both Home and Diaspora. Listen to us every, Saturday and Sunday from 20.00pm to 21.00pm Nigeria time {19-20 UT} on (Shortwave Radio) Frequency 17735 kHz SW. Also, listen to our online Radio 24/7 hrs/d ."

<<https://www.facebook.com/Yorubanationradiotv?mibextid=ZbWKwL>>

Enviado do Yahoo Mail no Android.

in Eibi list database:

17735 kHz 1900-2000 Tue XUU Unknown Station Yoruba NIG /G-w

USAGM monitoring, Test via ENC Encompass Digital Media Services Ltd

2023-08-03 19:02:18 capture: AM 17735 (WOF) ENC TEST

2023-08-03 19:33:46 capture: AM 17735 (WOF) ENC TEST

(Lucio Bobrowiec-BRA, via HCDX Aug 5)

re: Yoruba Nation Radio/TV

Checked here in Southern Germany remoted Perseus SDR net:

17735 even kHz Yoruba Nation Shortwave Radio heard on Aug 5 at 19.00 UT on S=8-9 level, fluttery sidelobe signal TX ENC Woofferton 17735even switch-on at 18.59:44 UT, 18.59:53 UT switch-on feed-line-in.

On KIWI\_net in South Africa via port <<http://jnb.twrmon.net:8073>> S=5 tiny at -94dBm poor signal.

<<http://186.193.231.135:7999>> in Sao Paulo Brasil, KIWI\_net unit S=7 at approx. -85dBm fluttery poor signal. typical West African accent talk by Nigerian male presenter.

[selected SDR options, span 12.5 kHz RBW 15.3 Hertz](wb df5sx, wwdxc BC-DX TopNews Aug 5)

**UNITED KINGDOM {ARMENIA / ASCENSION ISL / MADAGASCAR / OMAN / PHILIPPINES / SAO TOME / UAE / UZBEKISTAN / VATICAN STATE}** - Die BBC Relaisstation Singapur Kranji wurde am 15.

Juli 2023, 2359 Uhr, abgeschaltet, weil der Pachtvertrag fuer das Land ausgelaufen ist. Im Windschatten dieser Abschaltung wurden auch Sendungen in Englisch fuer den Nahen und Mittleren Osten aus dem Oman gestrichen. In einem Monitoringprojekt wurde in der zweiten Juli-Haelfte folgender Sendeplan fuer den World Service in Englisch verifiziert:

0000-0100	UT	5945	kHz	OMA	250	kW,	63deg	fuer	Suedasien
0000-0100	UT	7425	Aug. ex7325	kHz	GAV	300	kW,	100deg	fuer Suedasien
0100-0200	UT	7425	Aug. ex7325	kHz	OMA	250	kW,	63deg	fuer Suedasien
0100-0200	UT	9495	kHz	TAC	100	kW,	131deg	fuer	Suedasien
0400-0500	UT	12095	kHz	MDC	250	kW,	315deg	fuer	Ostafrika
0459-0600	UT	5875	kHz	WOF	100	kW,	78deg	fuer	Europa, nicht 3955 kHz
0500-0700	UT	9410	kHz	ASC	125	kW,	27deg	fuer	Westafrika
0500-0600	UT	11810	kHz	MDC	250	kW,	265deg	fuer	Suedafrika, ungehoert
0500-0600	UT	12095	kHz	SMG	250	kW,	199deg	fuer	Westafrika
0500-0600	UT	15490	kHz	WOF	125	kW,	158deg	fuer	Zentralafrika
0500-0600	UT	21560	kHz	DHA	250	kW,	225deg	fuer	Ostafrika, unbrauchbar
0600-0700	UT	9915	kHz	ASC	125	kW,	85deg	fuer	Zentralafrika, unbrauchbar
0600-0700	UT	12095	kHz	SAO	100	kW,	335deg	fuer	Westafrika
0600-0700	UT	15420	kHz	SAO	100	kW,	138deg	fuer	Suedafrika
0600-0700	UT	17640	kHz	MDC	250	kW,	265deg	fuer	Suedafrika, unbrauchbar
0600-0700	UT	17830	kHz	SMG	250	kW,	170deg	fuer	Zentralafrika
0600-0700	UT	21560	kHz	MDC	125	kW,	310deg	fuer	Ost-AF sehr wechselhaft
0700-0800	UT	13580	kHz	SAO	100	kW,	335deg	fuer	Westafrika, unbrauchbar
0700-0800	UT	15400	kHz	ASC	125	kW,	27deg	fuer	Westafrika
0700-0800	UT	15490	kHz	ASC	125	kW,	85deg	fuer	Zentralafrika
0700-0800	UT	17640	kHz	SAO	100	kW,	138deg	fuer	Suedafrika, unbrauchbar
0700-0800	UT	21470	kHz	SMG	250	kW,	170deg	fuer	West- und Zentralafrika
0700-0800	UT	21560	kHz	MDC	250	kW,	310deg	fuer	Ostafrika
0700-0800	UT	21630	kHz	MDC	125	kW,	260deg	fuer	Suedafrika, unbrauchbar
0800-0900	UT	15185	kHz	TAC	100	kW,	163deg	DRM	fuer Asien
1000-1200	UT	9410	kHz	PHT	PHL	fuer	Ost-/Suedostasien	ungeklaert	
1200-1400	UT	15310	kHz	OMA	250	kW,	63deg	fuer	Suedasien, unbrauchbar
1200-1300	UT	17790	kHz	OMA	250	kW,	80deg	fuer	Suedasien, unbrauchbar
1300-1400	UT	11870	kHz	OMA	250	kW,	68deg	fuer	Suedasien, ungehoert
1500-1600	UT	11800	kHz	OMA	250	kW,	225deg	fuer	Ostafrika
1600-2000	UT	7445	kHz	MDC	250	kW,	320deg	fuer	Ostafrika
1600-1900	UT	17830	kHz	ASC	125	kW,	85 degr,	1700 Uhr	65deg fuer West- und Zentralafrika
1600-1700	UT	11700	kHz	OMA	250	kW,	225deg	fuer	Suedafrika
1600-1700	UT	21630	kHz	ASC	125	kW,	114deg	fuer	Suedafrika
1700-2000	UT	7265	kHz	MDC	125	kW,	265deg	fuer	Suedafrika, in Europa weitgehend von CRI blockiert
1700-1800	UT	17780	kHz	ASC	125	kW,	27deg	fuer	Westafrika
1700-1800	UT	21470	kHz	ASC	125	kW,	65deg	fuer	Westafrika
1800-2000	UT	9410	kHz	DHA	250	kW,	225deg	fuer	Ostafrika, unbrauchbar
1800-2000	UT	15400	kHz	ASC	125	kW,	27deg	fuer	Westafrika
1800-1900	UT	17640	kHz	WOF	125	kW,	165deg	fuer	Westafrika
1900-2000	UT	9890	kHz	SAO	100	kW,	138deg	fuer	Suedafrika, unbrauchbar
1900-2200	UT	11810	kHz	ASC	125	kW,	65deg	fuer	Zentralafrika, Sa So bis 2100 Uhr
2000-2200	UT	12095	kHz	ASC	125	kW,	27deg	fuer	Westafrika, Sa So bis 2100 Uhr
2200-2300	UT	9440	kHz	PHT	250	kW,	200deg	fuer	Suedostasien, in Europa von Radio Kairo blockiert
2300-2400	UT	11825	kHz	PHT	250	kW	fuer	Suedostasien, ungehoert	

Fuer Asien eingesetzt wird hier neben Sendern in Usbekistan Taschkent und auf den Philippinen USAGM Tinang primaer die Sendeanlage im Oman A'Seela, die in Europa aber immer schon schwieriger zu hoeren war. Die Afrika- Sendungen aus Ascension, aus Grossbritannien Woofferton, Madagaskar in Talata Volonondry, Sao Tome Pinheira, von vatikanischem Gelaende Santa Maria di Galeria und aus den Vereinigten Arabischen Emiraten aus al-Dhabayya, wurden nicht angetastet.

(via hjb, Bieners DX Digest column Aug 6)

**U.S.A.** - Nach mehrmonatiger Pause wurde WEWN Vandiver-AL-USA Ende Juli 2023 wieder gehoert. Glenn Hauser entdeckte am 31. Juli 2023 Global Catholic Radio in Englisch auf 15610 kHz.

Der fuer die Zeit 26. Maerz - 28. Oktober 2023 eingetragene traditionelle Sendeplan ist seit Langem fiktiv, kann aber wenigstens bei der Frequenzsuche anleiten. Monitoring Anfang August hatte folgende Ergebnisse:

0000-1400 Uhr 5970 kHz 100 kW, 160deg Spanisch, ungehoert  
 0000-0900 Uhr 9385 kHz 250 kW, 85deg Englisch, ungehoert  
 0900-1300 Uhr 9470 kHz 250 kW, 335deg Englisch, seit Jahren nie {mehr} auf Sendung.  
 1400-2400 Uhr 12050 kHz 100 kW, 155deg Spanisch, abends bei Monitoring ungehoert.  
 1900-2400 Uhr 15610 kHz 250 kW, 85deg Englisch, jetzt wieder 2000-2400Uhr,  
 1900Uhr bei Monitoring ungehoert.

(Dr. Hansjoerg Biener-D, Bieners DX Digest column Aug 6)

15150 kHz WMLK, 0410-0430 UT on 28 July, En. Woman singing 'Lamb of God' accompanied by piano. Station ID at 0412 UT. Elder Jacob O Meyer welcomed listeners to next portion of programming. Largely faded to mush by 0430 UT. SINPO 44444 to 22222.

(Tony Pavick-BC-CAN, via NASWA Electronic Flashsheet #1111 July 30)

5130.17 kHz approx., August 13 at 0710 UT, rock music, S=9/+15dB vs HSNL, WBCQ test direct again tonight. Earlier on Aug 13, Uncle Bill Tilford replied to my previous: "Uncle Bill comments: Not impossible that a show like John's or Marion's, playing 78s in the wee hours, might work. Right now there is some spoken word at 0258 UT and it's touch and go. Incidentally, the speakers are anything BUT pro-Trump."

(gh, wor Aug 14)

VoA - English to Africa

0300-0400 UTC 909 1530 4930 6080 15580  
 0400-0430 UTC 909 1530 4930 4960 6080 15580  
 0430-0500 UTC 909 4930 4960 6080 15580  
 0500-0600 UTC 909 4930 6080 15580  
 0600-0700 UTC 909 1530 6080 9550 15580  
 1400-1500 UTC 4930 15580 17885  
 1500-1600 UTC 4930 7455 15580 17895  
 1600-1630 UTC 909 1530 4930 6080 15580 17895  
 1630-1700 UTC 909 1530 4930 17895  
 1630-1700 UTC 6080 15580 (Saturday and Sunday)  
 1700-1730 UTC 6080 13590 17895  
 1700-1730 UTC 15580 (Saturday and Sunday)  
 1730-1800 UTC 6080 13590 15580 17895  
 1800-1900 UTC 13590 15580  
 1800-1900 UTC 909 4930 (Saturday and Sunday)  
 1900-2000 UTC 909 4930 13590 15580  
 2000-2100 UTC 909 1530 4930 6195 15580  
 2030-2100 UTC 4960 (Saturday and Sunday)  
 2100-2200 UTC 1530 6195 15580

South Sudan - English

1630-1700 UTC 11850 13865 15180

(VoA)

**VANUATU** - Radio Vanuatu signs off 1102 UTC on July 13. Radio Vanuatu was heard here on the US east coast again, July 13 on 7260 kHz, signing off at 1102 UT with their national anthem. This was a full hour after local sunrise. There was a weak signal, noise, and fading here in Damascus, Maryland, near Washington DC. Barely audible. RSPdx SDR with 80 meter horizontal loop antenna 12 to 30 feet above ground. ...  
 (Marshall Reel, WOR July 13)

\*\*\*\*\*

**WRTH A-23 season Update.**

<<https://wrth.info/ainternational-summer-schedules-update/>>

(Mauno Ritola-FIN, wrth July 28)

\*\*\*\*\*

## ENCOMPASS A23 Schedule (as of August 23, 2023)

QRG	Start UTC	Stop UTC	CIRAF	Broad-caster	Language	Transmitter	Beam	Power (kW)	Days of operation (Sun=1)	Notes
5945	0000	0100	41,42SW	BBC WS	Eng	A'Seela	63	250	1234567	ENASS_Old
7425	0000	0100	41,42SW	BBC WS	Eng	Tashkent	131	100	1234567	ENASS_Old
9870	0000	0030	41NE	IBRA Radio	Ben	Tashkent	131	100	1234567	SS02
12095	0000	0030	41NE	IBRA Radio	Ben	Tashkent	131	100	1234567	SS02
6195	0030	0100	40E,41NW	BBC WS	Prs	A'Seela	35	250	1234567	DARIA
7295	0030	0100	40E,41NW	BBC WS	Prs	S. Maria di Galeria	84	250	1234567	DARIA
6195	0100	0130	40E,41NW	BBC WS	Pus	A'Seela	35	250	1234567	PASHA
7295	0100	0130	40E,41NW	BBC WS	Pus	S. Maria di Galeria	84	250	1234567	PASHA
7425	0100	0200	41,42SW	BBC WS	Eng	A'Seela	63	250	1234567	ENASS_Old
7445	0100	0130	40E,41NW	BBC WS	Pus	A'Seela	35	250	1234567	PASHA
9495	0100	0200	41,42SW	BBC WS	Eng	Tashkent	131	100	1234567	ENASS_Old
11880	0100	0200	12,14	KBS	Spa	Greenville, NC (Site B)	176	250	1234567	
13710	0100	0130	49NW	Encompass DMS	Mya	Dhabayya	90	250	1234567	
15445	0100	0200	49E	AWR	Vie	Taipei	250	100	7	
6195	0130	0200	40E,41NW	BBC WS	Prs	A'Seela	35	250	1234567	DARIA
7295	0130	0200	40E,41NW	BBC WS	Prs	S. Maria di Galeria	84	250	1234567	DARIA
7445	0130	0200	40E,41NW	BBC WS	Prs	A'Seela	35	250	1234567	DARIA
7325	0200	0230	41NW	FEBC	Urd	Dhabayya	60	250	123457	BC21
7325	0200	0300	41NW	FEBC	Urd	Dhabayya	60	250	6	BC21
9410	0200	0230	40E,41NW	BBC WS	Pus	A'Seela	35	250	1234567	PASHA
9540	0200	0230	41NW	FEBC	Urd	Dhabayya	60	250	123457	BC21
9540	0200	0300	41NW	FEBC	Urd	Dhabayya	60	250	6	BC21
12095	0200	0230	40E,41NW	BBC WS	Pus	A'Seela	35	250	1234567	PASHA
13850	0200	0230	40E,41NW	BBC WS	Pus	Erevan	100	300	1234567	PASHA
9410	0230	0300	40E,41NW	BBC WS	Prs	A'Seela	35	250	1234567	DARIA
9895	0230	0300	40E	IBRA Radio	Prs	Dhabayya	45	250	1234567	SS31
12095	0230	0300	40E,41NW	BBC WS	Prs	A'Seela	35	250	1234567	DARIA
13850	0230	0300	40E,41NW	BBC WS	Prs	Erevan	100	300	1234567	DARIA
11870	0300	0330	40E,41NW	BBC WS	Pus	A'Seela	35	250	1234567	PASHA
13850	0300	0330	40E,41NW	BBC WS	Pus	Dhabayya	45	250	1234567	PASHA
15310	0300	0330	40E,41NW	BBC WS	Pus	Erevan	100	300	1234567	PASHA
9655	0330	0345	48W	TWR	Amh	Dhabayya	225	250	12	
9655	0330	0345	48W	TWR	Sid	Dhabayya	225	250	5	
9655	0330	0345	48W	TWR	Orm	Dhabayya	225	250	3	
12095	0400	0500	48SW,53NW	BBC WS	Eng	Madagascar	315	250	1234567	ENAFE_EAST
13790	0400	0430	48	BBC WS	Som	Madagascar	0	250	23456	SOMLA
17745	0400	0430	48	BBC WS	Som	Dhabayya	225	250	23456	SOMLA
3955	0459	0600	27SE,28NW	BBC WS	Eng	Woofferton	114	100	1234567	DRM_EUROPE
5875	0459	0600	27SE,28NW	BBC WS	Eng	Woofferton	78	100	1234567	DRM_EUROPE
5960	0500	0600	46SE	Encompass DMS	Kau	Ascension	55	250	1234567	
9410	0500	0600	46	BBC WS	Eng	Ascension	27	125	1234567	ENAFW_WEST
11810	0500	0600	52SE,53SW,57N	BBC WS	Eng	Madagascar	265	250	1234567	ENAFE_SOUTH
12095	0500	0600	46	BBC WS	Eng	S. Maria di Galeria	199	250	1234567	ENAFW_WEST
15490	0500	0600	47SW,52	BBC WS	Eng	Woofferton	158	125	1234567	ENAFW_CENTRAL
17815	0500	0600	48SW,53NW	BBC WS	Kin	S. Maria di Galeria	155	250	7	KRWNA
21560	0500	0600	48SW,53NW	BBC WS	Eng	Dhabayya	225	250	1234567	ENAFE_EAST
21660	0500	0600	48SW,53NW	BBC WS	Kin	Dhabayya	220	250	7	KRWNA
7410	0529	0600	46SE	BBC WS	Hau	Ascension	65	125	1234567	HAUSA
9440	0529	0600	46SE	BBC WS	Hau	Ascension	65	125	1234567	HAUSA
12065	0529	0600	46SE	BBC WS	Hau	Woofferton	160	250	1234567	HAUSA
17815	0529	0600	48SW,53NW	BBC WS	Kin	S. Maria di Galeria	155	250	1	KRWNA
21660	0529	0600	48SW,53NW	BBC WS	Kin	Dhabayya	220	250	1	KRWNA
7410	0600	0629	46	BBC WS	Fra	Ascension	27	125	1234567	FRENA_WEST
9410	0600	0700	46	BBC WS	Eng	Ascension	27	125	1234567	ENAFW_WEST
9440	0600	0629	37	BBC WS	Fra	S. Maria di Galeria	230	250	1234567	FRENA_NORTH
9915	0600	0700	47SW,52	BBC WS	Eng	Ascension	85	125	1234567	ENAFW_CENTRAL
12065	0600	0629	47S,52N,52SE	BBC WS	Fra	Ascension	70	250	1234567	FRENA_CENTRAL
12095	0600	0700	46	BBC WS	Eng	Sao Tome	335	100	1234567	ENAFW_WEST
13810	0600	0629	37	BBC WS	Fra	Woofferton	180	125	1234567	FRENA_NORTH
15420	0600	0700	52SE,53SW,57N	BBC WS	Eng	Sao Tome	138	100	1234567	ENAFE_SOUTH
15505	0600	0700	46SE	Encompass DMS	Kau	Woofferton	152	250	1234567	
17640	0600	0700	52SE,53SW,57N	BBC WS	Eng	Madagascar	265	250	1234567	ENAFE_SOUTH
17830	0600	0700	47SW,52	BBC WS	Eng	S. Maria di Galeria	170	250	1234567	ENAFW_CENTRAL

21560	0600	0700	48SW,53NW	BBC WS	Eng	Madagascar	310	125	1234567	ENAFE_EAST
9440	0629	0700	46SE	BBC WS	Hau	Ascension	65	250	1234567	HAUSA
12065	0629	0700	46SE	BBC WS	Hau	Ascension	65	125	1234567	HAUSA
13810	0629	0700	46SE	BBC WS	Hau	Sao Tome	20	100	1234567	HAUSA
11620	0700	0800	28	KBS	Kor	Woofferton	105	250	1234567	
13580	0700	0800	46	BBC WS	Eng	Sao Tome	335	100	1234567	ENAFW_WEST
13610	0700	0800	28	KBS	Kor	Woofferton	107	250	1234567	
15260	0700	0729	46	BBC WS	Fra	Ascension	27	125	1234567	FRENA_WEST
15400	0700	0800	46	BBC WS	Eng	Ascension	27	125	1234567	ENAFW_WEST
15490	0700	0800	47SW,52	BBC WS	Eng	Ascension	85	125	1234567	ENAFW_CENTRAL
15505	0700	0800	46SE	Encompass DMS	Kau	Ascension	65	250	1234567	
17530	0700	0800	48SW,53NW	BBC WS	Eng	Madagascar	310	250	1234567	ENAFE_EAST
17640	0700	0800	52SE,53SW,57N	BBC WS	Eng	Sao Tome	138	100	1234567	ENAFE_SOUTH
17830	0700	0729	47S,52N,52SE	BBC WS	Fra	Sao Tome	88	100	1234567	FRENA_CENTRAL
21470	0700	0800	47SW,52	BBC WS	Eng	S. Maria di Galeria	170	250	1234567	ENAFW_CENTRAL
21510	0700	0730	47E,48NW	BBC WS	Ara	Dhabayya	250	250	1234567	ARABA_NE_AF
21560	0700	0800	48SW,53NW	BBC WS	Eng	Madagascar	310	250	1234567	ENAFE_EAST
21630	0700	0800	52SE,53SW,57N	BBC WS	Eng	Madagascar	260	125	1234567	ENAFE_SOUTH
15185	0759	0900	41	BBC WS	Eng	Tashkent	163	100	1234567	DRM_ASIA
21660	0759	0900	41	BBC WS	Eng	A'Seela	63	100	1234567	DRM_ASIA
17640	0800	0830	39NE	IBRA Radio	Ara	Woofferton	102	250	1234567	SW31
17810	0830	0900	40E,41NW	BBC WS	Prs	A'Seela	35	250	1234567	DARIA
17865	0830	1030	40E	IBRA Radio	Prs	Dhabayya	45	250	1234567	SS42
21470	0830	0900	40E,41NW	BBC WS	Prs	A'Seela	63	250	1234567	DARIA
17810	0900	0930	40E,41NW	BBC WS	Pus	A'Seela	35	250	1234567	PASHA
21470	0900	0930	40E,41NW	BBC WS	Pus	A'Seela	63	250	1234567	PASHA
17810	0930	1000	40E,41NW	BBC WS	Prs	A'Seela	35	250	1234567	DARIA
21470	0930	1000	40E,41NW	BBC WS	Prs	A'Seela	63	250	1234567	DARIA
9410	1000	1200	51W,54	BBC WS	Eng	Tinang 1	200	250	1234567	ENASE_SOUTH
17810	1000	1030	40E,41NW	BBC WS	Pus	A'Seela	35	250	1234567	PASHA
21470	1000	1030	40E,41NW	BBC WS	Pus	A'Seela	63	250	1234567	PASHA
17810	1030	1100	40E,41NW	BBC WS	Prs	A'Seela	35	250	1234567	DARIA
21470	1030	1100	40E,41NW	BBC WS	Prs	A'Seela	63	250	1234567	DARIA
17745	1100	1700	48	BBC WS	Som	Dhabayya	225	250	17	SOMLA
17810	1100	1130	40E,41NW	BBC WS	Pus	A'Seela	35	250	1234567	PASHA
21470	1100	1130	40E,41NW	BBC WS	Pus	A'Seela	63	250	1234567	PASHA
21630	1100	1600	46SE	BBC WS	Hau	Ascension	65	250	7	HAUSA
21660	1100	1530	48	BBC WS	Som	Dhabayya	220	250	17	SOMLA
17730	1130	1200	49NW	Encompass DMS	Mul	Taipei	285	300	1234567	
17730	1130	1200	49NW	Encompass DMS	Mul	Dhabayya	90	250	1234567	
21710	1130	1200	49NW	Encompass DMS	Mya	Dhabayya	90	250	23456	
15215	1200	1230	41NE	FEBC	Bod	Dhabayya	70	250	123	BS26
15310	1200	1300	41,42SW	BBC WS	Eng	A'Seela	63	250	1234567	ENASS_Old
17535	1200	1230	37	BBC WS	Fra	S. Maria di Galeria	238	250	1234567	FRENA_NORTH
17640	1200	1230	46	BBC WS	Fra	Ascension	27	250	1234567	FRENA_WEST
17730	1200	1300	49NW	Encompass DMS	Mya	Dhabayya	90	250	1234567	
17790	1200	1300	41,42SW	BBC WS	Eng	A'Seela	68	250	1234567	ENASS_Old
17845	1200	1300	48E,48SW	Encompass DMS	Som	Dhabayya	225	250	1234567	
21595	1200	1300	48E,48SW	Encompass DMS	Som	Dhabayya	225	250	1234567	
21710	1200	1300	49NW	Encompass DMS	Mya	Dhabayya	90	250	1234567	
25900	1200	1230	47S,52N,52SE	BBC WS	Fra	Madagascar	310	250	1234567	FRENA_CENTRAL
5875	1230	1300	44NE	BBC WS	Kor	Tinian Islands	329	250	23456	KOREA
7530	1230	1300	44NE	BBC WS	Kor	Tinang 1	21	250	23456	KOREA
9455	1300	1330	44NE	Encompass DMS	Kor	Taipei	2	300	1234567	
9940	1300	1330	44NE	Encompass DMS	Kor	Taipei	2	300	1234567	
11870	1300	1400	41,42SW	BBC WS	Eng	A'Seela	60	250	1234567	ENASS_Old
15310	1300	1400	41,42SW	BBC WS	Eng	A'Seela	63	250	1234567	ENASS_Old
15475	1300	1330	44NE	Encompass DMS	Kor	Tashkent	68	100	1234567	
17680	1300	1315	48W	TWR	Ar	Dhabayya	230	250	1567	
21645	1300	1700	46SE	BBC WS	Hau	Ascension	65	250	7	HAUSA
21710	1300	1400	49NW	Encompass DMS	Mya	Dhabayya	90	250	1234567	
9455	1330	1357	44NE	Encompass DMS	Jpn	Taipei	2	300	1234567	
9705	1330	1357	44NE	Encompass DMS	Jpn	Taipei	2	300	1234567	
13630	1330	1400	49NW	BBC WS	Mya	Tashkent	131	100	1234567	BURMA
15325	1330	1400	49NW	BBC WS	Mya	Tinang 1	283	250	1234567	BURMA
15475	1330	1357	44NE	Encompass DMS	Jpn	Tashkent	68	100	1234567	
17515	1330	1400	49NW	BBC WS	Mya	A'Seela	85	250	1234567	BURMA
5970	1400	1500	40E,41NW	BBC WS	Prs	A'Seela	35	250	1234567	DARIA
11995	1400	1500	40E,41NW	BBC WS	Prs	A'Seela	35	250	1234567	DARIA

13810	1400	1430	46SE	BBC WS	Hau	Sao Tome	0	100	23456	HAUSA
15420	1400	1600	48	BBC WS	Som	Dhabayya	225	250	7	SOMLA
15420	1400	1500	48	BBC WS	Som	Dhabayya	225	250	23456	SOMLA
17745	1400	1500	48	BBC WS	Som	Dhabayya	225	250	23456	SOMLA
21630	1400	1430	46SE	BBC WS	Hau	Ascension	55	250	23456	HAUSA
21660	1400	1500	48	BBC WS	Som	Madagascar	350	125	23456	SOMLA
25700	1400	1430	46SE	BBC WS	Hau	S. Maria di Galeria	185	250	23456	HAUSA
9685	1430	1500	44NE	Encompass DMS	Jpn	Taipei	2	300	1234567	
9705	1430	1500	44NE	Encompass DMS	Jpn	Taipei	2	300	1234567	
11805	1430	1500	41N	FEBC	Hin	Tashkent	131	100	14567	BS42
13660	1430	1500	41N	FEBC	Hin	Tashkent	131	100	14567	BS42
15180	1430	1500	40E	IBRA Radio	Haz	Dhabayya	45	250	1234567	SS07
15475	1430	1500	44NE	Encompass DMS	Jpn	Tashkent	68	100	1234567	
5970	1500	1600	40E,41NW	BBC WS	Pus	A'Seela	35	250	1234567	PASHA
6110	1500	1530	44NE	Encompass DMS	Kor	Taipei	352	300	1234567	
9650	1500	1530	44NE	Encompass DMS	Kor	Tashkent	76	100	1234567	
9685	1500	1530	44NE	Encompass DMS	Kor	Taipei	2	300	1234567	
9720	1500	1545	40E	IBRA Radio	Pus	Dhabayya	45	250	1234567	
11800	1500	1600	48SW,53NW	BBC WS	Eng	A'Seela	225	250	1234567	05-Aug-2023-29-Oct-2023
11995	1500	1600	40E,41NW	BBC WS	Pus	A'Seela	35	250	1234567	05-Aug-2023-29-Oct-2023
15310	1500	1530	47E,48NW	BBC WS	Ara	Dhabayya	250	250	1234567	06-May-2023-29-Oct-2023
15510	1500	1530	41NE	IBRA Radio	Ben	Tashkent	131	100	1234567	26-Mar-2023-29-Oct-2023
17590	1500	1530	41NE	IBRA Radio	Ben	Tashkent	131	100	1234567	26-Mar-2023-29-Oct-2023
17745	1500	1700	48	BBC WS	Som	Dhabayya	225	250	1	13-Aug-2023-29-Oct-2023
5875	1530	1600	44NE	BBC WS	Kor	Tinian Islands	329	250	23456	16-Jul-2023-29-Oct-2023
6110	1530	1600	44NE	Encompass DMS	Kor	Taipei	352	300	1234567	
7355	1530	1600	44NE	BBC WS	Kor	Tinang 1	21	250	23456	03-Apr-2023-29-Oct-2023
9390	1530	1600	44NE	BBC WS	Kor	Duchanbe	72	250	23456	03-Apr-2023-29-Oct-2023
9650	1530	1600	44NE	Encompass DMS	Kor	Tashkent	76	100	1234567	26-Mar-2023-29-Oct-2023
9685	1530	1600	44NE	Encompass DMS	Kor	Taipei	2	300	1234567	26-Mar-2023-29-Oct-2023
5970	1600	1630	40E,41NW	BBC WS	Prs	A'Seela	35	250	1234567	29-Oct-2023
6110	1600	1630	44NE	Encompass DMS	Jpn	Taipei	352	300	1234567	29-Oct-2023
7445	1600	2000	48SW,53NW	BBC WS	Eng	Madagascar	320	250	1234567	29-Oct-2023
9470	1600	1630	44NE	Encompass DMS	Jpn	Taipei	2	300	1234567	29-Oct-2023
9685	1600	1630	44NE	Encompass DMS	Jpn	Tashkent	76	100	1234567	29-Oct-2023
11655	1600	1630	48NW	IBRA Radio	Aar	Dhabayya	230	250	1234567	
11700	1600	1700	52SE,53SW,57N	BBC WS	Eng	A'Seela	225	250	1234567	
11995	1600	1630	40E,41NW	BBC WS	Prs	A'Seela	35	250	1234567	05-Aug-2023-29-Oct-2023
17700	1600	1830	46SE	BBC WS	Hau	Ascension	55	250	7	
17830	1600	1700	47SW,52	BBC WS	Eng	Ascension	85	125	1234567	15-Apr-2023-29-Oct-2023
21630	1600	1700	52SE,53SW,57N	BBC WS	Eng	Ascension	114	125	1234567	27-May-2023-29-Oct-2023
9540	1615	1630	48W	IBRA Radio	Amh	Dhabayya	225	250	1234567	
5875	1630	1700	44NE	BBC WS	Kor	Tinian Islands	329	250	23456	16-Jul-2023-29-Oct-2023
5970	1630	1700	40E,41NW	BBC WS	Pus	A'Seela	35	250	23456	
5970	1630	1700	40E,41NW	BBC WS	Prs	A'Seela	35	250	17	
6110	1630	1700	44NE	Encompass DMS	Kor	Taipei	352	300	1234567	
7355	1630	1700	44NE	BBC WS	Kor	Tinang 1	21	250	23456	03-Apr-2023-29-Oct-2023
9390	1630	1700	44NE	BBC WS	Kor	Duchanbe	72	250	23456	03-Apr-2023-29-Oct-2023
9540	1630	1700	48W	IBRA Radio	Amh	Dhabayya	225	250	1234567	
11995	1630	1700	40E,41NW	BBC WS	Pus	A'Seela	35	250	23456	29-Oct-2023
11995	1630	1700	40E,41NW	BBC WS	Prs	A'Seela	35	250	17	05-Aug-2023-29-Oct-2023
13860	1630	1700	48SW,53NW	BBC WS	Kin	Dhabayya	225	250	23456	
17745	1630	1700	48SW,53NW	BBC WS	Kin	Madagascar	315	125	23456	
5970	1700	1800	40E,41NW	BBC WS	Prs	Erevan	100	300	1234567	20-Jul-2023-29-Oct-2023
6110	1700	1730	44NE	Encompass DMS	Jpn	Taipei	352	300	1234567	
6195	1700	1800	40E,41NW	BBC WS	Prs	A'Seela	63	250	1234567	20-Jul-2023-29-Oct-2023
7265	1700	2000	52SE,53SW,57N	BBC WS	Eng	Madagascar	265	125	1234567	
9550	1700	1800	40E,41NW	BBC WS	Prs	A'Seela	35	250	1234567	05-Aug-2023-29-Oct-2023
9630	1700	1730	48W	IBRA Radio	Orm	Dhabayya	225	250	1234567	
15260	1700	1800	39SE	IBRA Radio	Ara	Woofferton	114	250	1234567	31-Mar-2023-29-Oct-2023
17745	1700	1800	48	BBC WS	Som	A'Seela	225	250	1	13-Aug-2023-29-Oct-2023
17745	1700	1830	48	BBC WS	Som	A'Seela	225	250	17	
17780	1700	1800	46	BBC WS	Eng	Ascension	27	125	7	19-Aug-2023-29-Oct-2023
17780	1700	1800	46	BBC WS	Eng	Ascension	27	125	123456	19-Aug-2023-29-Oct-2023
17830	1700	1900	47SW,52	BBC WS	Eng	Ascension	65	125	1234567	
21470	1700	1800	46	BBC WS	Eng	Ascension	65	125	1234567	
5875	1730	1800	44NE	BBC WS	Kor	Tinian Islands	329	250	23456	16-Jul-2023-29-Oct-2023
7355	1730	1800	44NE	BBC WS	Kor	Tinang 1	21	250	23456	03-Apr-2023-29-Oct-2023
9390	1730	1800	44NE	BBC WS	Kor	Duchanbe	72	250	23456	03-Apr-2023-29-Oct-2023



9540	1730	1750	48	BBC WS	Amh	A'Seela	240	250	23456	
9630	1730	1800	48W	IBRA Radio	Tir	Dhabayya	225	250	1234567	
9645	1730	1800	48SW	IBRA Radio	Xst	Dhabayya	215	250	1234567	
9720	1730	1800	44NE	Encompass DDMS	Kor	Tashkent	76	100	1234567	
11965	1730	1750	48	BBC WS	Amh	Dhabayya	230	250	23456	
15510	1730	1900	47E,48W	Encompass DMS	Ara	Woofferton	137	250	1234567	
15685	1730	1750	48	BBC WS	Amh	S. Maria di Galeria	130	250	23456	
17670	1730	1900	47E,48W	IBRA Radio	Ara	Woofferton	137	300	1234567	22-Aug-2023-29-Oct-2023
9540	1750	1810	48	BBC WS	Orm	A'Seela	240	250	23456	
11965	1750	1810	48	BBC WS	Orm	Dhabayya	230	250	23456	
15685	1750	1810	48	BBC WS	Orm	S. Maria di Galeria	130	250	23456	
5970	1800	1900	40E,41NW	BBC WS	Pus	Erevan	100	300	1234567	20-Jul-2023-29-Oct-2023
6035	1800	1830	48	FEBC	Tir	Dhabayya	215	250	1567	
6195	1800	1900	40E,41NW	BBC WS	Pus	A'Seela	63	250	1234567	20-Jul-2023-29-Oct-2023
9410	1800	2000	48SW,53NW	BBC WS	Eng	Dhabayya	225	250	1234567	
9550	1800	1900	40E,41NW	BBC WS	Pus	A'Seela	35	250	1234567	05-Aug-2023-29-Oct-2023
9720	1800	1830	44NE	Encompass DMS	Jpn	Tashkent	76	100	1234567	
9750	1800	1830	53S	BBC WS	Fra	S. Maria di Galeria	146	250	1234567	
11875	1800	1830	37	BBC WS	Fra	S. Maria di Galeria	230	100	1234567	
12050	1800	1900	46SE	Encompass DMS	Kau	Ascension	55	250	1234567	
13720	1800	1830	47S,52N,52SE	BBC WS	Fra	Sofia	180	250	1234567	
13790	1800	1830	46	BBC WS	Fra	S. Maria di Galeria	210	250	1234567	
15265	1800	1900	29N,29SE	KBS	Rus	Woofferton	58	250	1234567	
15400	1800	1900	46	BBC WS	Eng	Ascension	27	125	1234567	
15490	1800	1830	46	BBC WS	Fra	Ascension	27	125	1234567	
17640	1800	1900	46	BBC WS	Eng	Woofferton	165	125	1234567	
9540	1810	1830	48	BBC WS	Tir	A'Seela	240	250	23456	
11965	1810	1830	48	BBC WS	Tir	Dhabayya	230	250	23456	
15685	1810	1830	48	BBC WS	Tir	S. Maria di Galeria	130	250	23456	
6165	1815	1900	48NW	TWR	Tir	Dhabayya	225	250	23457	
6165	1830	1900	48NW	TWR	Kun	Dhabayya	225	250	1	
6165	1830	1900	48NW	TWR	Tir	Dhabayya	225	250	6	
9585	1830	1900	38NE,39N	Encompass DMS	Ara	S. Maria di Galeria	114	250	1	
9685	1830	1850	48	BBC WS	Amh	A'Seela	240	250	23456	
9695	1830	2130	46SE	BBC WS	Hau	A'Seela	265	250	7	19-Aug-2023-29-Oct-2023
11965	1830	1850	48	BBC WS	Amh	S. Maria di Galeria	130	250	23456	
9685	1850	1910	48	BBC WS	Orm	A'Seela	240	250	23456	
11965	1850	1910	48	BBC WS	Orm	S. Maria di Galeria	130	250	23456	
6145	1900	2000	27SE	KBS	Fra	Woofferton	114	250	1234567	22-Aug-2023-29-Oct-2023
9585	1900	1930	52SE,53SW,57N	Encompass DMS	Eng	Ascension	115	250	1	
9890	1900	2000	52SE,53SW,57N	BBC WS	Eng	Sao Tome	138	100	1234567	
11660	1900	1930	46SE	Encompass DMS	Eng	Ascension	65	250	1	
11810	1900	2100	47SW,52	BBC WS	Eng	Ascension	65	125	1234567	
12050	1900	2100	46SE	Encompass DMS	Kau	Woofferton	152	250	1234567	
15400	1900	2000	46	BBC WS	Eng	Ascension	27	125	1234567	
15420	1900	2000	47E,48NW	Encompass DMS	Ara	Dhabayya	240	250	1234567	29-Jul-2023-29-Oct-2023
17735	1900	2000	46SE	Encompass DMS	Yor	Woofferton	170	300	17	22-Aug-2023-29-Oct-2023
9685	1910	1930	48	BBC WS	Tir	A'Seela	240	250	23456	
11965	1910	1930	48	BBC WS	Tir	S. Maria di Galeria	130	250	23456	
9685	1930	2030	46SE	BBC WS	Hau	Ascension	55	125	6	
9685	1930	2000	46SE	BBC WS	Hau	Ascension	55	125	123457	
11660	1930	2000	46SE	BBC WS	Hau	Ascension	65	125	123457	
11660	1930	2030	46SE	BBC WS	Hau	Ascension	65	125	6	
17640	1930	2000	46SE	BBC WS	Hau	Woofferton	165	125	123457	07-Jul-2023-29-Oct-2023
17640	1930	2030	46SE	BBC WS	Hau	Woofferton	165	125	6	07-Jul-2023-29-Oct-2023
3955	2000	2100	28NW	KBS	Deu	Woofferton	114	250	1234567	
6090	2000	2100	37S	KBS	Ara	Woofferton	172	250	1234567	
7230	2000	2030	37S,38,46N,47N	Encompass DMS	Ara	S. Maria di Galeria	145	250	1	
9410	2000	2030	37S,38,46N,47N	Encompass DMS	Ara	S. Maria di Galeria	210	250	1	
12095	2000	2100	46	BBC WS	Eng	Ascension	27	125	1234567	
7300	2100	2115	37S	HCJB Australia	Ara	Woofferton	170	250	234567	26-Jul-2023-29-Oct-2023
7300	2100	2145	37S	HCJB Australia	Ara	Woofferton	170	250	1	26-Jul-2023-29-Oct-2023
11810	2100	2200	47SW,52	BBC WS	Eng	Ascension	65	125	23456	21-Jun-2023-29-Oct-2023
12095	2100	2200	46	BBC WS	Eng	Ascension	27	125	23456	21-Jun-2023-29-Oct-2023
3915	2200	2400	43SE,44SW,49E	BBC WS	Eng	Kranji (Merlin)	0	250	1234567	
9440	2200	2300	51W,54	BBC WS	Eng	Tinang 1	200	250	1234567	
11825	2300	2400	51W,54	BBC WS	Eng	Tinang 1	200	250	1234567	

(ENCOMPASS, transcription we)

\*\*\*\*\*

Editor's info desk was closed for this edition at 18:00 hours UTC on July 15th, 2023.

Please also see the "List of Broadcasts in German" (Hörfahrplan Deutsch) updated regularly on our WWDXC website.

\*\*\*\*\*

Sources & Contributors:

- A-DX - e-mail exchange - Austria
- BCDX - News Bulletin by Wolfgang Bueschel (wb) - Stuttgart - Germany
- WOR (gh) - Glenn Hauser's WORLD OF RADIO - Oklahoma - USA
- Prof. Dr. Hansjörg Biener (hjb) - Nuremberg - Germany
- Others as stated at contribution.

\*\*\*\*\*

Abbreviations:

with name of station:

BC / bc = Broadcaster, Int. = International, R = Radio, tx = Transmitter, Vo = Voice of, QRG = frequency

Location of transmitters with frequency:

AI = Aligarh/India, ALB = Albania, Ban = Bangalore, Be = Beijing/China, Bib = Biblis/DL, BOT = Botswana, CHN = China, CLN-TRM = Sri Lanka Trincomalee, Du = Dushanbe/TJK, ERV (ARM) = Erivan/Armenia, F = Issoudun/France, FI = Florida/USA, HAB = Habana/Cuba, Ho = Hohhot/CHN, HRI = WHRI Cypress Creek/USA, Jin = Jinhua, Kash = Kashgar/CHN, Ka = Kingsway (Delhi), Kh = Khampur (Delhi), KII - Kall/DL, KOR = (South) Korea, Ku = Kununurra/Aus, Kun = Kunming/CHN, KWT = Kuwait, Lam = Lampertheim/DL, MDA = Moldavia, MDG = Madagascar, MNG = Mongolia, MRA = Northern Marianas, N = Nauen/DL, Nn = Nanning/CHN, OM = Oman, Pan = Panaji/India, Row = Rohrbach Waal/DL, RUS = Russia incl. Sibiria, SAI = Saipan (MRA), SNG = Singapur, STP = Sao Tomé, SWZ = Swaziland (ESWATINI), SZG = Shijazhuang/CHN, TH = (NAK) Nakhon Sawan/Thailand, TIN = Tinian (MRA), TJK = Tajikistan, TWN = Taiwan, UAE = Al Dubbaya/ United Arab Emirates, Ur = Urumchi/CHN, Wil = Winsen/Luhe/DL, Wof = Woofferton/GB, Xi = Xian/CHN, Ya = Yamata/Japan.

Mostly within round brackets target areas as known:

Af = Africa, Am = America, As = Asien, Aus = Australien; Eu = Europe, FE = Far East, ME = Middle East, OC / Pac = Pacific Region; C = Central, E = East, N = North, S = South, W = West

Languages:

Ar Arabic - Ch Chinese - Du Dutch - E, En English - F French - G, Ge German - Gr Greek - I Italian - J Japanese - K Korean - P Portuguese - R Russian - Sp, Spa Spanish - Turk Turkish - VN Vernacular

Technical hint with frequency (QRG):

(\* /drm) = Digital Radio broadcast (DRM) v = variable irr / # = irregular / technical problems

/USB = upper sideband, /LSB = lower sideband, alt.: (QRG) = alternative frequency

\*\*\*\*\*

Editor:

Walter Eibl (we)
EMail: <we@wwdx.de> or <we@kwrs.de>
Used equipment:

Receiver: ICOM IC-R70 communications receiver (no modification)
Antennas: Hamtronic HT504 selective active antenna, in roof window ca. 15 m above ground
Situation: Herzogenaurach / Germany; 49.567/10.917; 310 m NN
mostly monitoring via WORLD WIDE WEB.

\*\*\*\*\*



# DX LOGBOOK

## Logs around the clock

by Ashok Kumar Bose, 106 Aspermont Crescent, Brampton, Ontario, L6P 3Z3, Canada  
E-Mail: <logbook@wwdxc.de>

### MEDIUMWAVE BAND

Frequency	UTC	SIO	ITU	Radio Station	Language	Programme Details	Date	Rep.
198.0	1853	354	G	BBC Radio	English	E, rpt, TS, TA, NX	3107	SG
225.0	1830	253	POL	Polskie Radio	Polskie	Polskie, ID, Jazz Piano	3107	SG
540.0	1300	544	HNG	MR Kossuth	Hungarian	ID News, Weather	2307	HS
549.0	1257	444	SVN	R.Koper via Beli Kriz	Slovenian	Oldies music, Anncts.	2307	HS
558.0	1255	444	SVN	R.MMR,Murska Sobota	Hungarian	Anncts.,Pop Music	2307	HS
648.0	0840	343	SVN	Radio Murski Val	Slovenian	Studios talk, ID, Pop Music	2607	HS
954.0	1740	454	CZE	Country Radio	Czech	Studios talk about medicine	2307	HS
963.0	1930	343	TUN	RTCI Tunis	German	D, ID, Schlager, rpt	2607	SG
981.0	1805	353	CZE	Cesky Impuls	Czech	Ancts.,Pop music,info.	2307	HS
1017.0	0832	252	I	Amica Radio Veneto	Italian	Pop Music,Ancts, ID	2607	HS
1035.0	2025	333	G	Lyca Radio	English	ID,Asiatic music style	2307	HS
1035.0	2050	533	EST	TWR via Radio Eli	Russian	Religious program, ID	2307	HS
1170.0	1210	454	SVN	R. Capodistria	Italian	Pop Music, Ancts.	2307	HS
1188.0	0825	252	HNG	MR,Pecs Reg. Px	German	Pop music,Greetings	2607	HS
1287.0	2105	222	HOL	Kilrock Radio,Rotterdam	Dutch	Easy Listening,Slaapmusic	2307	HS
1386.0	1945	444	LTU	RFE-RL via Viesintos	Russian	R, rpts, ann, ID	2507	SG
1476.0	1212	222	AUT	Museuemsradio	German	Austrian Oldies music	2307	HS
1503.0	1215	322	I	RDE,Trieste	Italian	Music of 60's,ID	2307	HS

### SHORTWAVE BANDS

Frequency	UTC	SIO	ITU	Radio Station	Language	Programme Details	Date	Rep.
3955.0	1830	454	D	Radio DARC via Ch292	German	D, ID, Afu; Technik; Pop	0107	SG
3955.0	1900	454	D	Musikallee via Ch292	German	D, ID, 1973 Rockpop	0107	SG
3955.0	1900	454	D	ABC Germany via Ch292	English	E, ID, Rockpop, Jingles	1607	SG
3955.0	2000	454	G	KBS-WR via WOF	German	D, ID, NX, Jub70, K-Pop	1507	SG
3955.0	2100	454	D	Pop Shop Radio	English	E, ID, Rockpop, adr	1507	SG
3975.0	2000	353	D	Shortwave Radio Winsen	English	E, NX, ID, Rockpop	2607	SG
3985.0	1700	353	D	RSI via Kall	German	D, ID, NX, rpt, MX	2607	SG
5790.0	1900	353	HOL	FRSH	English	E, ID, Rockpop, ID	3007	SG
5800.0	1817	454	HOL	Radio Continental	Dutch	Holl, Ids, Rockpop	3007	SG
5800.0	1850	454	HOL	Radio Continental	English	E, ID, Rockpop	3007	SG
5880.0	1911	353	HOL	Radio Rock Revolution	English	E, ID, Rockpop	3007	SG
5900.0	1900	454	BUL	RTI via Kostinbrod	German	D, ID, NX, Business news	1107	SG
5905.0	2000	454	D	DWD Pinneberg	German	D, Seewetterberichte	0407	SG
5920.0	0246	353	D	HCJB-Weenermoor	Russian	R, Lieder, ID; ann	0507	SG
5920.0	0430	353	D	HCJB-Weenermoor	German	D, ID; Medienmagazin	1507	SG
5920.0	2045	454	D	ZP30 via HCJB Wmr	German	D, ID, Thema Freunde, ID	1507	SG
5920.0	2103	454	D	HCJB-Weenermoor	German	D, ID; Medienmagazin	3007	SG

5925.0	0300	444	BOT	VOA-Relay	English	E, ID, NX, rpts	0507	SG
5930.0	0515	454	DNK	WMR Bramming	English	E, LA-Pop, ID, LA-Pop	0207	SG
5930.0	1710	454	DNK	WMR Bramming	English	E, LA-Pop, ID, LA-Pop	2607	SG
5935.0	0300	454	USA	WWCR	English	E, ID, adr, bible bc	0407	SG
5955.0	0530	454	HOL	Radio Sunlite	Dutch	Dutch, Rockpop, ID	0207	SG
5960.0	1925	454	D	Warship via Nauen	English	E, Lord of glory bc, ID	3007	SG
6000.0	250	544	CUB	Radio Havana Cuba	English	E, Music with a message	1408	RL
6000.0	0440	343	CUB	RHC	English	E, MX, ann, rpt, ID	2907	SG
6005.0	1000	343	D	RSI via Kall	German	D, ID, NX, MX, rpt	0607	SG
6005.0	1030	342	D	RSI via Kall	English	E, ID, NX, rpts, MX	0607	SG
6005.0	1100	343	D	RSI via Kall	French	F, ID, NX, rpts, MX	0107	SG
6005.0	1500	343	D	RSI via Kall	Spanish	S, ID, NX, rpts, MX	2807	SG
6005.0	1900	454	BUL	RTI via Kostinbrod	French	F, ID, NX, MX, rpts	3007	SG
6020.0	1115	454	HOL	Radio Delta International	English	E, ID, Rockpop	0107	SG
6020.0	0710	454	HOL	Radio Casanova	Dutch	Dutch, ID, Rockpop	0207	SG
6030.0	0240	453	USA	Radio Marti	Spanish	S, ID, rpt sociale, MX	0507	SG
6050.0	0423	353	EQA	HCJB via Pichincha	Spanish	LA-MX, ann, ID, LA-MX	2907	SG
6055.0	0900	444	AUT	Radio DARC via ORS	German	D, ID, Afu; Technik; Pop	0207	SG
6055.0	1030	554	D	Ev. Missionsgemeinden	German	D, IS, ID, Lied, Thema	1607	SG
6060.0	1530	444	HOL	Radio Casanova	English	E, Pop, ID, JLast, ann	2807	SG
6070.0	0620	454	D	Radio DARC via Ch292	German	D, ID, Afu; Technik; Pop	0207	SG
6070.0	0700	454	D	SuperClan Radio via Ch292	English	E, ID, Rockpop	0207	SG
6070.0	0900	353	D	Radio DARC via Ch292	German	D, ID, Afu; Technik; Pop	0207	SG
6070.0	1000	353	D	ABC Germany via Ch292	English	E, ID, 90 rock music	0207	SG
6070.0	1100	353	D	RNEI via Ch292	English	E, ID, Rockpop	0207	SG
6070.0	1100	454	AUT	SMRD via ORS	German	D, ID, HBF, Tondoku	0907	SG
6070.0	1100	453	D	RNI via Ch292	English	E, ID, Rockpop, Jingles	1607	SG
6070.0	1200	353	D	Jake FM via Ch292	German	D, ID, Rockpop	2307	SG
6070.0	1300	353	D	Jake FM via Ch292	German	D, ID, Rockpop	2307	SG
6070.0	1400	353	D	RNI via Ch292	English	E, ID, Rockpop	2907	SG
6070.0	1500	354	D	SMRD via Ch292	German	D, ID, Wdh Paul Rebeson	2907	SG
6070.0	1500	454	D	Musikallee via Ch292	German	D, ID, 73er Geb-Party	1607	SG
6070.0	1600	454	D	Radio Carpathia via Ch292	English	E, Rockpop, ID	1607	SG
6070.0	1700	454	D	Korches Radio via Ch292	German	D, ID, Volksmusik	0907	SG
6070.0	1700	454	D	Korches Radio via Ch292	German	D, ID, Schlager	1607	SG
6070.0	1800	353	D	Decade AM	German	D, ID, Rockpop	0807	SG
6070.0	1800	454	D	Radio PowerRumpel	German	ID, Filmmusik, RTI-DXT	0907	SG
6070.0	1900	454	D	SMRD via Ch292	German	D, ID, HBF, Tondoku	0907	SG
6070.0	1800	454	D	Jake FM via Ch292	German	D, ID, Rockpop	2307	SG
6070.0	1900	454	D	Jake FM via Ch292	German	D, ID, Rockpop	2307	SG
6080.0	0359	453	BOT	VOA via Mopeng Hill	English	Editorial Comment	1107	RL
6085.0	1100	454	D	Mi Amigo International	English	E, ID, Rock, ann, Rock	0107	SG
6095.0	1000	454	D	SETA 2 via Nauen	German	D, IS, ID, RnR 13, Jub3	0107	SG
6095.0	1000	454	D	SMRD via Nauen	German	D, ID, HBF, Tondoku	1607	SG
6105.0	0230	454	F	NHK-World Radio Japan	Japanese	J, ID, ann, rockpop	0507	SG
6115.0	0958	353	D	SETA 2 via Gera	German	D, IS, ID, RnR 13, Jub3	0207	SG
6130.0	0445	354	HOL	Radio Europe	Various	I, E, Dutch, Rockpop, ID	0807	SG
6140.0	0800	454	AUT	Welle 370 via ORS	German	D, IS, ID, Thema Zeit	0207	SG
6150.0	0904	332	D	Europa 24 via Dattein	German	News, ID, Popmusic	2607	HS
6150.0	0900	353	D	Europa 24	German	D, ID, TA, NX, Pop	0407	SG
6150.0	1750	454	THA	VOA-Relay	Burmese	Burmese, rpt, ID, IS, cd	0507	SG
6160.0	0920	453	D	Shortwave Radio Winsen	English	ID, ARRL-DX-News, ID	0207	SG
6160.0	0925	353	D	Shortwave Radio Winsen	German	D, AGDX zu R. Polonia	0207	SG
6160.0	1940	454	D	Shortwave Radio Winsen	English	E, Rockpop, ID	0407	SG
6180.0	2000	454	D	DWD Pinneberg	German	D, Seewetterberichte	0407	SG
6185.0	2020	453	HOL	FRSH	English	E, Rockpop, ID, Pop	3007	SG
6195.0	2030	454	BOT	VOA-Relay	English	E, Afropop, ID, rpt	0407	SG
7270.0	1500	443	HOL	Rockpower via Njimengen		Beatles "Let it be"	2607	HS

7295.0	2040	454	CHN	CRI	English	E, economic, ID, MX	0407	SG
7365.0	0910	353	D	HCJB-Weenermoor	Russian	R, ID, rpt, orthodox MX	0407	SG
7365.0	1550	353	D	HCJB-Weenermoor	Russian	R, ID, rpt, orthodox MX	2707	SG
7365.0	1530	443	D	HCJB Weenermoor	Russian	Religious program, ID	2607	HS
7385.0	1600	333	CHN	PBS, Xizang	English	Anncts., ID, News	2607	HS
7395.0	1800	554	CHN	CRI	German	D, IS, ID, trad MX only	3007	SG
7425.0	2045	554	F	NHK-World Radio Japan	French	F, Sprachkurs, ID, IS, cd	0407	SG
7475.0	1800	554	THA	RTWS	English	E, IS, ID, NX, rpts, MX	2507	SG
7475.0	1900	554	THA	RTWS	English	E, ID, tourism tours	2507	SG
9265.0	0130	453	USA	WINB Red Lion	English	E, bible bc, ID, adr	1407	SG
9275.0	2100	343	USA	WMLK Bethel	English	E, bible bc, adr, ID	0307	SG
9330.0	0200	454	USA	WBCQ-WLC Radio	Portuguese	P, IS, ID, WLC bc	1207	SG
9330.0	0400	454	USA	WBCQ-WLC Radio	English	E, ID, ann, bible bc	0807	SG
9330.0	0500	454	USA	WBCQ-WLC Radio	English	E, ID, ann, bible bc	0807	SG
9330.0	0530	454	USA	WBCQ-WLC Radio	English	E, ID, ann, bible bc	2907	SG
9395.0	0220	353	USA	WRMI	English	E, pop, ID, rock, DX	1207	SG
9400.0	0510	454	BUL	TOM via Kostinbrod	English	E, ID, bible bc, ID, adr	2907	SG
9405.0	1625	343	TWN	RTI Tamsui	English	E, MX, ID, rpt, MX	2707	SG
9410.0	1938	454	EGY	Radio Cairo	German	D, MX, ID, ann, HBF, adr	2507	SG
9425.0	1615	342	KRE	Voice of Korea	German	D, MX, ID, MX, rpt	2607	SG
9425.0	1700	444	KRE	Voice of Korea	Russian	R, ID, NA, ID, MX, NX	2607	SG
9425.0	1800	454	KRE	Voice of Korea	German	D, IS, ID, NA, MX, NX	2607	SG
9440.0	1800	454	EGY	Radio Cairo	Italian	I, ID, MX, ann, NX	3007	SG
9440.0	2115	454	EGY	Radio Cairo	English	E, ID, MX, ann, NX	3007	SG
9455.0	0130	453	USA	Mighty KBC via WRMI	English	Digital Scan, Contest	1308	RL
9470.0	2100	553	BOT	VOA via Mopeng Hill	French	English Course, ID	2707	HS
9480.0	1800	454	CHN	CRI	French	F, IS, ID, NX, rpts, MX	2407	SG
9480.0	1900	454	CHN	CRI	French	F, ID, NX, rpts, MX	2407	SG
9500.0	0400	554	ROU	Radio Romania Actualidad	Romanian	Romanian, ID, NX, MX	0807	SG
9500.0	1600	554	ROU	RRI	French	F, IS, ID, NX, rpt, MX	2707	SG
9500.0	1700	454	SWZ	TWR Africa Manzini	Amharic	Amharic, IS, ID, bible bc	2707	SG
9500.0	1730	454	SWZ	TWR Africa Manzini	Oromo	Oromo, MX, ID, bible bc	2707	SG
9500.0	1800	454	SWZ	TWR Africa Manzini	English	E, IS, ID, bible bc, ID	3007	SG
9535.0	1600	343	CHN	CRI	German	D, IS, ID, trad MX only	2707	SG
9545.0	1800	454	TWN	RTI-Tamsui	French	F, ID, Testsendung	0107	SG
9545.0	1800	454	TWN	RTI-Tamsui	German	D, ID, Tamsui direkt	3007	SG
9570.0	2115	555	CHN	CRI via Urumqui	French	Africa Cooperative	2707	HS
9600.0	1400	454	ROU	RRI	German	D, IS, ID, NX, RT, FBK	3007	SG
9605.0	1720	454	CHN	CRI	Russian	R, MX, ID, ann, rpt	2507	SG
9620.0	1915	454	IND	AIR	Arabic	A, ID, ann, MX, NX	2507	SG
9620.0	1930	454	IND	AIR	French	F, IS, ID, ann, MX, rpt	2507	SG
9640.0	2120	555	CHN	CRI via Kashi	Spanish	Talks on history & culture	2707	HS
9670.0	0535	454	D	Voice of Europe	English	E, Rockpop, ID	2907	SG
9670.0	0545	454	D	Channel 292	English	E, ID, ann, Rockpop	2907	SG
9670.0	0900	444	D	Radio DARC via Ch292	German	D, ID, Afu; Technik; Pop	3007	SG
9670.0	1600	151	D	Radio Carpathia via Ch292	English	E, nothing audible	2807	SG
9670.0	1720	454	D	Crusader Radio via Ch292	English	E, Crusing the decades, ID	0407	SG
9700.0	0200	554	ROU	RRI	Spanish	S, IS, ID, NX, rpt, MX	0507	SG
9700.0	0530	554	ROU	RRI	English	E, IS, ID, NX, rpt, MX	2907	SG
9700.0	0600	454	ROU	RRI	German	D, IS, ID, NX, rpts, MX	2907	SG
9700.0	1730	454	NZL	Radio New Zealand	English	E, MX, rpt, ID	2607	SG
9705.0	2000	554	CVA	Vatican Radio	English	E, IS, ID, NX, Africa Sce	2607	SG
9705.0	2030	554	CVA	Vatican Radio	French	F, IS, ID, NX, Africa Sce	2607	SG
9710.0	1600	454	CVA	Vatican Radio	Armenian	Armenian, IS, ID, NX	2507	SG
9710.0	1620	454	CVA	Vatican Radio	Russian	R, IS, ID, NX	2707	SG
9710.0	1640	454	CVA	Vatican Radio	Ukrainian	Ukr, IS, ID, NX	2707	SG
9730.0	1700	454	VTN	VOV	Vietnamese	Vietn, ID, NX, rpt, MX	2707	SG
9730.0	1800	353	VTN	VOV	Spanish	S, ID, NX, rpt, Musik	2707	SG

9730.0	1830	353	VTN	VOV	German	D, ID, NX, rpt,HBF	2607	SG
9730.0	1900	554	CHN	CRI	Portuguese	P, IS, ID, trad MX	2607	SG
9730.0	2000	353	VTN	VOV	German	D, ID, NX, rpts, Musik	2507	SG
9730.0	2130	353	VTN	VOV	English	E, ID, NX, rpts, Musik	2507	SG
9740.0	2033	554	ROU	RRI	English	E, NX, ID, MX, rpt	2607	SG
9765.0	2125	332	MDG	MWV Palavra Alegre	Portugese	Anncts., Music,ID	2707	HS
9840.0	1730	454	TUR	TRT	German	D, IS, ID, NX, Presse	0407	SG
9840.0	1730	454	TUR	TRT	German	D, IS, ID, NX, HBF	2707	SG
9850.0	0342	554	ROU	Radio Romania Intl.	English	Letterbox Richard Lemke	1308	RL
9855.0	1920	453	IRN	IRIB	English	E, ID, economic rpt	2907	SG
9875.0	2030	454	TUR	TRT	English	E, IS, ID, NX, press, MX	3007	SG
9880.0	1930	454	TUR	TRT	French	F, IS, ID, NX, press, MX	2907	SG
9885.0	1800	454	MDG	KNLS via MWV	Russian	R, ID, bible bc, gospel, ID	0407	SG
9910.0	1515	343	MRA	RFA-Relay	Korean	Korean, ID, rpts	2507	SG
9955.0	0124	453	USA	WRMI	English	Blues Radio International	1707	RL
9990.0	1500	343	MRA	RFA-Relay	Korean	Korean, ID, rpts	2507	SG
10000.0	2010	353	USA	WWV-WVVH	English	E, Time signals, IDs	2907	SG
11600.0	0510	454	BUL	TOM via Kostinbrod	English	E, ID, bible bc, ID, adr	2907	SG
11610.0	1500	454	CHN	CRI	English	E, ID, NX, rpts, talks	2807	SG
11620.0	0048	454	ROU	RRI	English	E, talk, ID, folkmusic	1407	SG
11620.0	0342	553	ROU	Radio Romania Intl.	English	In the spotlight	1707	RL
11650.0	1000	554	ROU	RRI	French	F, IS, ID, NX, rpt, MX	0607	SG
11660.0	2130	454	CHN	CRI via Kashi	French	News,Sichuan archeology	2707	HS
11670.0	2200	333	E	REE-SNR	English	E, ID, NX, rpts	0307	SG
11700.0	1653	333	OMA	BBC via A'Seela	English	Report	2207	HS
11710.0	1301	453	KRE	Voice of Korea	English	Program	1408	RL
11725.0	1600	454	CHN	CRI	German	D, IS, ID, trad MX only	2707	SG
11745.0	1650	322	ARS	SBA Al-Azm Radio	Arabic	ID"Huna al azm radio"	2207	HS
11770.0	2000	554	CHN	CRI	English	E, ID, NX, rpts	2907	SG
11775.0	1800	554	CHN	CRI	German	D, IS, ID, trad MX only	3007	SG
11780.0	0200	554	ROU	RRI	Spanish	S, IS, ID, NX, rpt, MX	0507	SG
11815.0	1415	433	J	NHK World Radio	English	E, Community land marks	1408	RL
11815.0	1600	454	CVA	Vatican Radio	Armenian	Armenian, IS, ID, NX	2507	SG
11815.0	1620	454	CVA	Vatican Radio	Russian	R, IS, ID, NX	2707	SG
11815.0	1640	454	CVA	Vatican Radio	Ukrainian	Ukr, IS, ID, NX	2707	SG
11850.0	2035	554	ROU	RRI	English	E, NX, ID, MX, rpt	2607	SG
11870.0	2000	554	CVA	Vatican Radio	English	E, IS, ID, NX, Africa Sce	2607	SG
11870.0	2030	554	CVA	Vatican Radio	French	F, IS, ID, NX, Africa Sce	2607	SG
11880.0	1400	454	ROU	RRI	German	D, IS, ID, NX, RT, FBK	3007	SG
11885.0	2140	433	VTN	Voice of Vietnam	English	Energy facility with Japan	2707	HS
11885.0	1600	454	VTN	VOV	English	E, ID, ann, NX, rpts, MX	2707	SG
11885.0	1630	454	VTN	VOV	Russian	R, ID, ann, NX, rpts, MX	2707	SG
11885.0	1700	454	VTN	VOV	Vietnamese	Vietn, ID, NX, rpt, MX	2707	SG
11885.0	1800	444	VTN	VOV	Spanish	S, ID, NX, economica	2607	SG
11885.0	1900	444	VTN	VOV	English	E, ID, ann, NX, rpts, MX	2607	SG
11885.0	2000	444	VTN	VOV	German	D, ID, NX, rpt, MX	2507	SG
11900.0	1259	342	AUS	Reach Beyond	Vernicular	Vernicular, IS, ID, bible bc	3007	SG
11910.0	1630	454	BOT	VOA-Relay	English	E, ID, rpt Sudan, ID	2707	SG
11930.0	2145	343	USA	VOA via Greenville	Spanish	Nicaragua deficit report	2707	HS
11940.0	1648	544	CHN	CRI via Kashi	English	China Mall , talk in Studio	2207	HS
11940.0	1600	454	CHN	CRI	English	E, ID, NX, economy	2807	SG
11965.0	1600	454	CHN	CRI	English	E, ID, NX, economy	2807	SG
11965.0	1645	555	CHN	CRI via Kashi	English	China Mall , talk in Studio	2207	HS
11975.0	1615	454	ROU	RRI	French	F, ID, rpt EU economy	2807	SG
11985.0	2100	443	MRA	RFA-Relay	Korean	Korean, IS, ID, rpts	3007	SG
11995.0	2155	343	F	RFI via Issoudun	French	Reggae music	2707	HS
11995.0	1700	454	TWN	RTI-Tamsui	French	F, ID, Testsendung	0107	SG
11995.0	1700	454	TWN	RTI-Tamsui	German	D, ID, Tamsui direkt	3007	SG

11995.0	1728	454	TWN	RTI-Tamsui	French	F, ID, Testsendung	0107	SG
11995.0	2020	454	F	RFI	French	F, rpt climate, ID, MX	2907	SG
12005.0	1710	554	D	R. Farda via Lampertheim	Farsi	Program Anctts.,ID,email.	2107	HS
12005.0	1515	454	G	Radio Farda	Persian	Persian, MX, ID, rpt	2707	SG
12015.0	1600	454	KRE	Voice of Korea	German	D, IS, ID, MX, NX, rpt	2607	SG
12015.0	1700	311	KRE	Voice of Korea	Russian	R, ID, NA, ID, MX, NX	2607	SG
12015.0	1700	444	CHN	CRI	English	E, ID, NX, sports, rpts	2607	SG
12015.0	1900	454	KRE	Voice of Korea	German	D, IS, ID, NA, MX, NX	2607	SG
12070.0	1700	353	THA	VOA via Udon Thani	Dari	ID,Magazine on Camera	2107	HS
12070.0	2030	454	KWT	VOA-Relay	Hausa	Hausa, ID, rpts, MX	2907	SG
12095.0	2015	454	ASC	BBC-WS-Relay	English	E, ID, phone rpts	2907	SG
13610.0	1300	454	ROU	RRI	Russian	R, IS, ID, NX, rpt, MX	1707	SG
13635.0	0940	554	TUR	TRT	Turkish	Turkish, MX, ID, rpt, MX	2607	SG
13650.0	2030	554	ROU	RRI	English	E, IS, ID, NX, MX, rpt	2907	SG
13670.0	1330	454	CHN	CRI	English	E, ID, rpt economy	1407	SG
13710.0	0500	422	F	NHK-World Radio Japan	English	E, IS, ID, ann, NX, rpt	3007	SG
13760.0	1800	454	KRE	VoKorea	English	E, IS, ID, MX, NX, rpt	3007	SG
13760.0	2000	454	KRE	VoKorea	French	F, IS, ID, MX, NX, rpt	3007	SG
13790.0	0236	454	ALG	Ifriky FM	French	F, ID, Pop, ID, rpt	1207	SG
13800.0	0510	454	BUL	TOM via Kostinbrod	English	E, ID, bible bc, ID, adr	2907	SG
13830.0	1630	454	MDG	Vatican Radio	English	E, IS, ID, NX, rpts	0507	SG
13830.0	1700	454	MDG	Vatican Radio	French	F, IS, ID, NX, rpts	0507	SG
13830.0	1730	454	MDG	Vatican Radio	Tigrina	Tigrina, IS, ID, ann, rpts	0507	SG
15030.0	0500	454	IND	AIR	Arabic	A, IS, ID, ann, NX, MX	2807	SG
15130.0	0200	554	ROU	RRI	Spanish	S, IS, ID, NX, rpt, MX	0507	SG
15130.0	1000	554	ROU	RRI	French	F, IS, ID, NX, rpt, MX	0607	SG
15130.0	1100	332	ROU	Radio Bucharest	English	News,Economic News	2307	HS
15150.0	1000	554	ROU	RRI	French	F, IS, ID, NX, rpt, MX	0607	SG
15180.0	1700	554	ROU	RRI	English	E, IS, ID, NX, MX, rpt	0507	SG
15190.0	1803	454	PHL	Radio Filipinas	Tagalog	Tagalog, ID, tourism	2707	SG
15245.0	1500	454	CHN	CRI	English	E, ID, NX, rpt inflation	2807	SG
15245.0	2000	554	KRE	Voice of Korea	French	F, IS, ID,NA, NX, rpt	3007	SG
15250.0	1650	353	CHN	CRI via Urumqui	English	Studiantalk India industry	2107	HS
15275.0	1259	555	F	DW Koln via Issoudun	Arabic	Sign off Anncts	2707	HS
15290.0	0900	454	F	NHK-World Radio Japan	Japanese	J, ID, ann, rpts, MX	0607	SG
15300.0	0830	454	F	RFI	French	F, ID, rpt Africaine	0707	SG
15300.0	1305	454	F	RFI via Issoudun	Fulani	Coup in Niger other News	2707	HS
15320.0	0900	454	F	RFI	French	F, TA, ID, rpt, ID	0707	SG
15320.0	1100	454	ROU	RRI	English	E, IS, ID, NX, rpt, MX	1107	SG
15335.0	0845	454	CHN	CRI	Russian	R, rpt, ID, sport, MX	0607	SG
15340.0	1315	454	ROU	Radio Romania Actualidad	Romanian	Romanian, Pop, ID, rpt	1407	SG
15350.0	0520	444	CHN	CRI	English	E, rpt engenering, ID	2907	SG
15350.0	1130	554	TUR	TRT	German	D, IS, ID, NX, HBF	2907	SG
15450.0	1230	454	TUR	TRT	English	E, IS, ID, NX, MX, rpt	1107	SG
15455.0	0830	454	F	RFI	Fulfulde	Fulfulde, ID, ann, rpts	0607	SG
15460.0	1800	342	STP	VOA via Pinheira	Zomi-chin	Coup in Niger other News	2707	HS
15460.0	1300	454	AUS	Reach Beyond	Tamil	Tamil, IS, ID, MX, bible	3007	SG
15460.0	1315	454	AUS	Reach Beyond	Nepali	Nepali, IS, ID, MX, bible	3007	SG
15460.0	1330	454	AUS	Reach Beyond	Hindi	Hindi, ID, fresh, ID, MX	3007	SG
15460.0	1345	454	AUS	Reach Beyond	English	E, ID, spotlight, ID, adr	3007	SG
15465.0	0520	444	CHN	CRI	English	E, rpt engenering, ID	2907	SG
15505.0	1400	454	TJK	AWR-Relay	English	E, IS, ID, bible bc, ID	3007	SG
15520.0	1630	554	E	REE	Spanish	S, TS, ID, rpt politico	3007	SG
15520.0	2130	454	E	REE-SNR	Arabic	A, TS, ID, NX, rpt, MX	0307	SG
15520.0	2200	454	E	REE-SNR	English	E, TS, ID, NX, rpts	0307	SG
15520.0	2230	454	E	REE-SNR	French	F, TS, ID, NX, rpts	0307	SG
15575.0	1329	453	KOR	KBS World Radio	English	Korean Trends	1007	RL

15580.0	0500	453	BOT	VOA-Relay	English	E, ID, NX, rpt Ukr war	2707	SG
15580.0	1500	454	BOT	VOA-Relay	English	E, ID, NX, bordercrossing	2707	SG
15580.0	2000	454	BOT	VOA-Relay	English	E, ID, NX, rpts Africa	3007	SG
15590.0	1300	554	CHN	CRI	English	E, ID, NX, rpts	1407	SG
15595.0	0600	454	CVA	Vatican Radio	Italian	I, ID, radiojornale	1207	SG
15595.0	0610	454	CVA	Vatican Radio	Arabic	A, ID, NX, ID, MX	1207	SG
15595.0	0630	454	CVA	Vatican Radio	French	F, ID, NX, ID, MX	1207	SG
15660.0	1830	555	G	VOA via Wooferton	Amharic	ID, Report from Khartoum	2707	HS
15665.0	0845	454	CHN	CRI	Russian	R, rpt premiera, ID, MX	0607	SG
15700.0	2040	353	DNK	WMR Randers	English	E, Rockpop, ID, Pop	2907	SG
15720.0	0830	454	TUR	TRT	Farsi	Farsi, IS, ID, NX, rpt	0507	SG
15770.0	1120	454	USA	WRMI Brother Stair	English	Bible broadcast	2307	HS
15770.0	0400	454	USA	Radio Liberty via WRMI	Russian	R, IS, ID, NX, rpt	2907	SG
15770.0	0500	454	USA	Supreme Master TV WRMI	English	E, ID, rpt on social	2907	SG
15770.0	0630	454	USA	RSI via WRMI	Spanish	S, ID, ann, folklore	3007	SG
15770.0	1054	444	USA	WRMI	English	E, country MX, ID, adr	2807	SG
15770.0	2245	353	USA	Radio Poland via WRMI	English	E, ID, classic music, ID	0307	SG
17490.0	1235	454	CHN	CRI via Kashi	English	Talk on Sport industry	2707	HS
17510.0	0515	454	CHN	CRI	English	E, ID, rpt Hongkong	1107	SG
17520.0	0515	454	ROU	RRI	French	F, rpt, ID, Pop, rpt	2907	SG
17530.0	1500	454	BOT	VOA-Relay	English	E, ID, NX, bordercrossing	2707	SG
17570.0	0910	454	CHN	CRI	English	E, ID, rpt film festival	0607	SG
17600.0	1010	353	ALG	Ifrikya FM	French	F, ID, Pop, ID, rpt	0607	SG
17615.0	0500	454	CHN	CRI	German	D, IS, ID, trad MX only	1207	SG
17630.0	1100	554	ROU	RRI	English	E, IS, ID, NX, rpt, MX	3007	SG
17640.0	0500	353	THA	Voice of Thailand	English	E, TA, ID, NX, rpts	1107	SG
17650.0	0910	454	CHN	CRI	English	E, ID, rpt film festival	0607	SG
17670.0	1100	343	ROU	RRI	English	E, IS, ID, NX, rpt, MX	3007	SG
17715.0	2200	353	E	REE-SNR	English	E, ID, NX, rpts	0307	SG
17720.0	0500	454	CHN	CRI	German	D, IS, ID, trad MX only	2907	SG
17730.0	0515	454	CHN	CRI	English	E, ID, rpt Hongkong	1107	SG
17800.0	1258	454	F	DW Koln via Issoudun	Arabic	Sign off Anncts	2707	HS
17855.0	2200	242	E	REE-SNR	English	E, ID, NX, rpts	0307	SG
21540.0	1000	242	MRA	RFA-Relay	Tibetan	Tibetan, ID, ann, rpts	1207	SG
21550.0	0530	454	ROU	RRI	English	E, IS, ID, ann, NX, rpt	2907	SG
21580.0	0920	353	F	RFI	French	F, ID, ann, rpts, MX	0607	SG
21670.0	0945	454	ARS	Saudi Radio	Indonesian	Indonesian, ID, rpt, MX	0607	SG
21695.0	0930	454	PHL	VOA	Chinese	C, ID, rpt, MX	1207	SG

\*\*\*\*\*

### Here are the loggings from Richard D'Angelo of Wyomissing, PA, USA:

- 5910.0 COLOMBIA Alcaravan Radio – Puerto Lleras, 0304-0410 Aug 15, OM with long religious talk in Spanish. Nice selection of religious vocals followed by a male preaching loud at his audience. Fair signal.
- 5995.0 MALI Radio Television du Mali – Bamako, 2347-0002\* Aug 9, nice program of tribal music hosted by a man announcer with French talks. Fair signal but mixing with another (unidentified) station.
- 6070.0 CANADA CFRX – Toronto, 0036 0107 Aug 16, OM announcer with YL professor of economics discussing inflation & interest rates. Traffic Report followed by "News Talk 10-10 station ID. Good signal.
- 7505.0 USA WRNO – New Orleans, 0316-0335 Aug 4, man and woman preaching in English with station ID at 0328 by OM ("This is WRNO Worldwide") followed by email and postal mail addresses. Good signal.
- 9265.0 USA WINB – Red Lion, 2332-2348 Aug 9, OM with English preaching to 2344 when another man gave station ID and postal address followed by two men speaking in the Spanish language. Poor to fair.
- 9275.0 USA WMLK – Bethal, 1736-1751 Aug 4, man announcer in English inviting listeners to stay tuned for the daily sermon by Jacob Meyer "over radio station WMLK in Bethal, Pennsylvania ." Good signal.
- 9665.4 BRAZIL Radio Voz Missionaria – Camboriu, 2340-0050 Aug 12, OM talking in Portuguese hosting a live music program with many rustic vocal selections. Another man with a long religious talk commenced at 0013 with a return to music features at 0039. Fair signal.



- 9710.0 CHINA China Radio International – Kashi, 0007-0044 Jul 13, group vocals followed by a woman with Portuguese talk and then non-stop music. Poor signal.
- 9770.0 TURKEY Voice of Turkey – Emirler, 0425 0446 Aug 15, music program into time pips at 0430 followed by station ID and News in the Turkish language. Fair to good signal.
- 9795.0 PHILIPPINES FEBC Radio (presumed), 2300-2341 Aug 15, an OM and YL with long talk in Mon with vocals accompanied by flutes heard soon thereafter. Program mainly of talks with some music segments, changed languages at 2330 into Lao. No station ID was heard. Poor signal.
- 9800.0 CHINA China Radio International – Kashi, 0036-0057\* Jul 18, man and woman in Spanish talks with nice flute instrumental music at 0047 and vocals until carrier terminated after station ID. Poor to fair signal.
- 9865.0 CHINA China Radio International – Urumqi, 2328-0000\* Aug 8, female vocal selection followed by a mix of talks by a man and woman announcers in the Chinese language histing music programming., Fair.
- 9880.0 CHINA China Radio International – Kashi, 2254-2359\* Aug 11, instrumental music heard until carrier terminated in what is listed as an Esperanto language program. Fair signal.
- 9885.0 EGYPT Radio Cairo -Abis, 2338-0022 Jul 25, Arabic program with woman announcer and some music. 4+1-time pips at 0000 followed by a man announcer with the news. Talk features followed at 0010. Fair signal but awful audio.
- 9900.0 EGYPT Radio Cairo – Abis, 2314-2327\* Aug 8, instrumental music followed by YL with talk in Portuguese language with carrier terminated at end of broadcast. Fair to good signal but awful modulation.
- 11620.0 ROMANIA Radio Romania International – Tiganesti, 0002-0023 Aug 9, man announcer with the news in English language followed by female vocal selection. Good signal.
- 11745.0 SAUDI ARABIA Al-Azm Radio - Jeddah, 0030 Aug 4, music & two men talking in Arabic . Fair signal.
- 11785.0 TURKEY Voice of Turkey – Emirler, 2204-2225 Jul 21, caught the tail end of the English news programs followed by Turkish musical features and discussions. Good signal.
- 11815.0 BRAZIL Radio Brasil Central – Goiânia, 0030-0116 Jul 25, man and woman announcers talking in the Portuguese . Nice station ID at 0100 followed by a man hosting a pop music program. Fair signal.
- 13630.0 MALI China Radio International – Bamako, 2053-2130\* Jul 21, pop vocals until 2100 when an OM gave the station ID over time pips followed by the news in the English . After a few discussion features the program ended with the French program opening shortly thereafter. Fair signal.
- 13670.0 CHINA China Radio International – Beijing, 2141-2157\* Jul 21, discussion program in listed Croatian language with broadcast carrier terminated at 2157. Poor to fair signal.
- 13790.0 ALGERIA Ifriky FM – Ourgla, 0035-0104 Jul 25, man announcer with Arabic language talk hosting sports coverage (?) followed by another man and a woman talking. Time pips at 0100 followed by vocal selections. Fair to good signal.
- 15520.0 GERMANY Adventist World Radio – Nauen, 0400-0430\* Aug 12, YL opening with English station ID stating the next program is in Amharic . OM with religious talk in Amharic. S/Off with instrumental music. Fair signal.
- 15580.0 BOTSWANA Voice of America – Moepeng Hill, 2032-2055 Jul 15, woman announcer with talk in the English language followed by a brief vocal selection. Mana dn woman with discussion, Poor to fair signal.
- 15590.0 THAILAND Radio Thailand - Ban Dung, Udon Thani Prov., 0001-0029\* Aug 4, woman with English news & breaks for announcements. Carrier terminated. Weak signal but finally some audio after a month.
- 15770.0 USA WRMI – Okeechobee, 1930-2003 Jul 19, nice WRMI station ID prior to VOA News with a feature called VOA Flashpoint Ukraine. Jeff White with WRMI station ID at 1959 followed by Lighthouse Radio Bible Study program. Fair to good signal.
- 17790.0 USA Radio Africa (Pan American Broadcasting) – Okeechobee, 1936-2003 Jul 25, canned English religious programming with station ID at 2000 before changing programs. Poor signal.

\*\*\*\*\*

**Thanks a lot to our club members for their contributions:**

- HS : Harald Suess, Strasshof, Austria. SANGEAN ATS 909 with mini whip SW antenna and Martens frame MW antenna
- RAD : Richard D'Angelo, Wyomissing, PA, USA. Ten-Tec RX-340, Drake R-8B, Eton E1, Eton E5, Alpha Delta DX Sloper, RF Systems Mini-Windom, Datong FL3, JPS ANC-4
- RL : Richard Lemke, St. Albert, Alberta, Canada. JRC NRD-535 HF with random long wires in trees
- SG : Siegbert Gerhard, Frankfurt am Main, Germany. AOR AR 7030 + 5m-EMF (Electric Magnetic Field) Antenna & Degen DE 1103 + Telescopic

\*\*\*\*\*

Dear Friends,

Welcome to the August/September 2023 bumper double edition of Logbook.

Thanks to our regular members for their contributions,

*Ashok Kumar Bose*

\*\*\*\*\*

	<h2 style="margin: 0;">QSL CORNER</h2> <p style="margin: 0;">Editor: Dário Gabrielli, Viale della Resistenza 33b, 30031 Dolo (Ve), ITALY eMail: &lt;qsl@wwdxc.de&gt;</p>	
---	--	---

**GERMANY:** Korches Radio 6070 kHz via Channel 292 Rohrbach. Programme in German. Full data colour e-QSL card in German received in 30 days for report to sent to: <korches-radio@gmx.de>. (HB)

Pop Shop Radio 3955 kHz via Channel 292 Rohrbach. eQSL received in 9 days for report sent to: <radiopopshow@gmail.com> (SG)

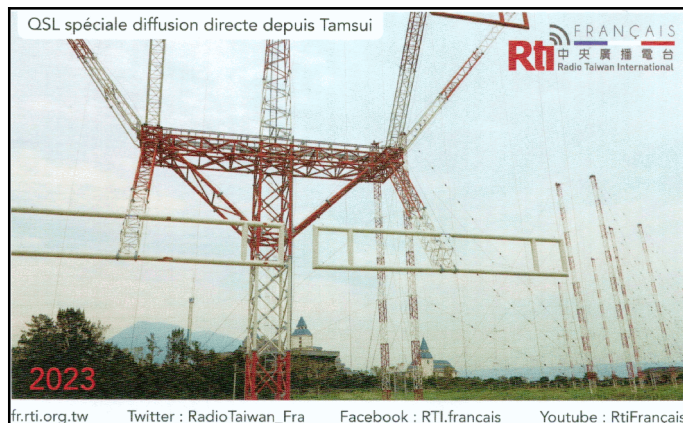
Radio Rock AM 6070 kHz via Channel 292 Rohrbach. German Programme. Thanking letter of confirmation received in the same day for report sent to: <mail.rockam@gmx.at> (HB)

Steel Guitar 3955 kHz via Channel 292 Rohrbach. eQSL received in 2 days for report sent to: <qslsteelguitar@gmail.com> (SG)

**KOREA (SOUTH):** KBS World Radio 3955 kHz. German Programme. QSL and handwritten greeting, received in 19 days (incl. 7 days for air mail delivery) for report sent to: <german@kbs.co.kr> (HB)



**TAIWAN:** Radio Taiwan International 11995 kHz via Tamsui (Taiwan). French service. Full data colour special QSL in French (Emetteur ondes courtes de Tamsui) received in 35 days for report sent to: <fren@rti.org.tw> (HB)



Radio Taiwan International 9700 kHz. QSL received in 30 days for report sent to: <rti@rti.org.tw> (BS)

Radio Taiwan International 11995 kHz via Tamsui (Taiwan). German service. Full data colour special QSL in German (members of the German service) received in 42 days for report sent to <deutsch@rti.org.tw> (HB)

**USA:** WRMI Okeechobee (Florida) 4980 kHz. WRMI Legends. Colour QSL received in 231 days for report sent via <https://www.wrmi.net/index.php/reception-report-qsl/> (HB)

\*\*\*\*\*

The reporters of this edition of QSL CORNER have been:

- BS = Bernd Seiser, Ottenau, Germany
- HB = Hansjoerg Biener, Nuremberg, Germany
- SG = Siegbert Gerhard, Frankfurt am Main, Germany

\*\*\*\*\*

Considering that the editor of this page has anticipated the vacations, please be advised that if you will not find your contributions in this issue, you will surely find them in the next issue of the magazine to be released in October, as the various editorial offices will enjoy a few days off in September. As a reminder, your submissions accompanied by QSLs in jpg format, to be published in the next issue of the magazine, must be received in the editorial office by October 6 at 2200 UTC.

I wish you all happy vacations and best 73,

*Dário*



## Pop Shop Radio Hope, British Columbia, Canada

At Pop Shop Radio we go around the world to bring you great stuff from all over. We play a whole variety of pop music, such as records from the 1960s and 1970s that were played on Top-40 radio stations in not only in North America but also on offshore radio and stations like Radio Luxembourg. To make it fun, we also include stuff that didn't make the Top 10. We like to show that music doesn't have to be in English to be great. Stopping off in places like Sweden, Finland, the Czech and Slovak Republics, Germany, France, Brazil, South Africa, Australia, and New Zealand we find cool records for you to groove to! We mix it all in the style of Top-40 radio of the 1960s and 1970s with jingles and real records played by a real DJ. We are everything that the boring FM corporate stations that have no personality and say they play the best variety are not. Last, but not least, Pop Shop Radio is made in the town of Hope in (super, natural) British Columbia in Canada. We are Canada's international voice to the world.

The town of Hope BC is known for many things like the filming of Rambo First Blood among other films, and as the chainsaw carving capital of the world. One of its hidden secrets is that it is home to a radio voice that reaches around the world.

Rising up from humble beginnings in September 2020, Pop Shop Radio, is proud to be celebrating its third anniversary on the air as Canada's International Voice on Shortwave. The show began as a way to say hello to the world as the COVID pandemic was ramping up and to spread a little peace and love around the world. As CBC left shortwave when it closed Radio Canada International in the early 2000s, Pop Shop Radio has worked to fill that void.

Pop Shop Radio is disk-jockey show such as you would have heard on AM radio back in the 1960s and 1970s. Playing the hits, the misses and everything in between, it has all the fun jingles you remember and the lost-art of DJ patter that made Top 40 radio fun. All of this is brought together by a DJ named Tony Pavick in Hope BC.

Pop Shop Radio reaches an audience around the world via a medium called shortwave. The show is broadcast from transmitters in Germany and Florida and reaches listeners all over Europe, Northern Africa, India, Pakistan, China, Japan, Australia, New Zealand, Cuba, Central and South America, and of course the USA and Canada.

As a part of the third anniversary celebration, all during the month of September, Pop Shop Radio will be featuring shows highlighting some of the best of what we have played over the past three years. This includes music from as far back as the 1930s, and even non-English pop songs in languages as diverse as Chinese and Afrikaans. Our regular broadcasts can be heard here in BC on 5950 khz at 0100 UTC on UTC Monday from WRMI in Florida. Other broadcasts from Germany on Channel292 are on Wednesday at 1600 UT and Saturday 2100 UT on 3955 and 9660 khz and are directed to Europe.

An extra special broadcast from the UK, rated at 250,000 kilowatts (5 times more powerful than any AM station in the US or Canada), will take place at 0200 UTC on 5 September 2023, Labour Day on 9875 khz. Previous special broadcasts at this power, such as our Canada Day Special, met with great success and were heard as far and wide as Australia and Uruguay. Other specials have been saluted 14 CFUN, CKLW, and CHUM.

Website of Pop Shop Radio: <http://www.popshopradio.ca> - Email: [radiopopshop@gmail.com](mailto:radiopopshop@gmail.com)



# SWL / Media Programs in English, German & Spanish

March 26 – October 29, 2023 – V4 As of Aug 27, 2023

© 2023 by WORLDWIDE DX CLUB, Germany.

e-mail: <mail@wwdxc.de>

URL: <<http://www.wwdxc.de>>

DX & Media news, receiver reviews, radio features, letterbox programmes, tuning tips, propagation, satellites, computers, amateur radio and radio theory.

**2<sup>nd</sup>** Figures behind language symbols E, G or Sp, indicate weeks of the month. Times and days in UTC.

STL – Satellite transmission. drm = DRM – digital mode

## Monday

0000 KVOH Voice of Hope, En, "AWR Wavescan" – 9975  
 0025 RHC Habana, E, Mailbag Show – 6000 9700 AM  
 0030 WRMI, E, R Slovakia "Listeners Tribune" –  
 5850 15770 NoAM SoLatinAM EUR  
 0030 WRMI, E, World of Radio – 7780 No&CeAM EUR  
 0040 RRI Bucharest, E, "Listeners Letterbox" -  
 9550 11620delete NoAM  
 0130 WRN to NoAM, E, World of Radio – AS AF PAC  
 0130 WRMI, E, AWR Wavescan – 9395 NoCe&SoAM EUR  
 0135 RHC Habana, Sp, "En Contacto" – 5040 6060irr 9535  
 9710 11670 11760 11850 13740 15230 NoAM/LatAM  
 0200 RRI Bucharest, Sp – 9700 17760 AM  
 0225 RHC Habana, E, Mailbag Show 6000 9700 NoAM  
 0245 WRMI, E, "Viva Miami" – 5800 NoCe&SoAM EUR  
 0250 BBCWS E, "Over to You" – DAB UK 198LW 1413oma  
 0300 WBCQ, E, "World of Radio" via "Area 51" – 6160v  
 0300 WRMI, Sp, "Antena DX" – 7780 NoCe&SoAM EUR  
 0300 WRMI, E, R Slovakia "Listeners Tribune" –  
 7780 NoAM SoLatinAM EUR  
 0340 RRI Bucharest, E, "Listeners Letterbox" –  
 9850 11620del 15330-drm 17790del NoAM SoAS  
 0425 RHC Habana, E, Mailbag – 6000 9700 NoAM  
 0430 WRMI, Sp, "Antena DX" – 9455 NoCe&SoAM EUR  
 0525 RHC Habana, E, Mailbag – 9700 NoAM  
 0612 RRI Bucharest, G, Funkbriefkasten – 11620-am EUR  
 0630 WRMI, E, R Slovakia "Listeners Tribune" - 15770 AM EUR  
 0633 RHC Habana, Sp, "En Contacto" – 5040irr 6000irr 9700  
 11670irr NoAM/LatAM  
 0800 WRMI, E, "SW Radiogram" – 5850 No&CeAM EUR  
 0900 WRMI, Sp, La Rosa de Tokio – 9455 No&CeAM EUR  
 1030 Radio Slovakia Internat, "Listeners Trib" E, Kall relay – 6005  
 1140 RRI Bucharest, E, "Listeners Letterbox" –  
 15130del 15320del 17630 17670 EUR EaAF  
 1315 WRMI, E, AWR Wavescan – 9955 NoCe&SoAM EUR  
 1335 DeutschlandFunk Cologne, G, Medias-res  
 1430 WRMI, E, AWR Wavescan – 9955 NoCe&SoAM EUR  
 1500 DARC Radio, via ch292 Rohrbach Germany, G – 6070  
 1700 R Slovakia, E, "Listeners Tribune" Kall relay – 3985 EUR  
 1730 VoHope Zambia, "AWR Wavescan" E, CeAF SoAF –  
 4965voh 6065voh - depends of local main power

1740 RRI Bucharest, E, "Letterbox" – 13750-drm EUR  
 1800 SW Radio Winsen "CQ Serenade" – 3975 EUR  
 1800 WRMI, G, RAE Buenos Aires – Internet only AM EUR  
 1800 DARC Radio, via ch292 Rohrbach Germany, G – 3955  
 2000 WRMI, Russian, "Radio Panorama" – 7730 NoCeSoAM

2100 WWCN Nashville, Sp, Frecuencia al Dia – 6115 NoAM  
 2200 WRMI, E, AWR Wavescan – 9395 WeNoAM EUR  
 2210 REE Madrid, E, Letters Mailbag – irregular, 2 x monthly  
 11670 15520 17715 17855 NE, EaAF, AF, SoAM, NoAM  
 2240 RRI Bucharest, E, "Listeners Letterbox" –  
 9740del 9790 11650del 11800 EaAS EUR  
 2300 WRMI, E, "Viva Miami" – 9395 NoCe&SoAM EUR

## Tuesday

0000 WRMI, E, AWR Wavescan – 9395 WeNoAM EUR  
 0000 WRMI, Sp, "Antena DX" – 7780 NoCe&SoAM EUR  
 0030 WRMI, E, World of Radio – 9395 WeNoAM EUR  
 0030 WRMI, E, AWR Wavescan – 7780 WeNoAM EUR  
 0040 RRI Bucharest, E, "Listeners Letterbox" -  
 9550 11620delete NoAM  
 0100 WRMI, E, RAE "ARG DXers Special" – 9395 AM EUR  
 0130 WRMI, E, AWR Wavescan – 9395 NoCe&SoAM EUR  
 0130 WRMI, E, "Viva Miami" – 5010 NoCe&SoAM EUR  
 0130 WRMI, Sp, Frecuencia al Dia – 9955 No&SoAM EUR  
 0145 WRMI, E, "Viva Miami" – 5850 No&SoAM EUR  
 0330 WRMI, E, AWR Wavescan – 7780 WeNoAM EUR  
 0340 RRI Bucharest, E, "Listeners Letterbox" –  
 9850 11620del 15330-drm 17790del NoAM SoAS  
 1140 RRI Bucharest, E, "Listeners Letterbox" –  
 15130del 15320del 17630 17670 EUR EaAF  
 1300 WRMI, E, World of Radio – 9955 WeNoAM EUR  
 1330 WRMI, E, "Viva Miami" – 9955 NoCe&SoAM EUR  
 1335 DeutschlandFunk Cologne, G, Medias-res  
 1430 WRMI, E, "Shortwave Radiogram-digi" – 9955 No&SoAM  
 1600 WRMI, G, RAE Buenos Aires DX – 7730irr 15770 CeNoAM  
 1640 R Taiwan Internat, E, "Status Update" – 9405 6100alt AS  
 1740 RRI Bucharest, E, "Letterbox" – 13750-drm EUR  
 1830 IRRS via Kostinbrod-BUL, E, "AWR Wavescan" – 7290  
 1830 IRRS, E, "AWR Wavescan" – 918 1323 AM Italia, Italy  
 1900 RRI Bucharest, Sp – 9610delete 11850 EUR WeAF  
 1932 BBCWS E, "Tech Life" – DAB UK  
 1413oma NE / ME / NoEaAF  
 2000 WRMI, Sp, La Rosa de Tokio – 15770 No&CeAM EUR  
 2030 IRRS, E, "AWR Wavescan" – 918 1323 AM Italia, Italy  
 2045 WRMI, E, "Viva Miami" – 7730 NoCe&SoAM EUR  
 2100 SW Radio Winsen "CQ Serenade" – 3975 EUR  
 2100 RRI Bucharest, Sp – 13650-drm 15130del LatAM  
 2115 WRMI, E, "Viva Miami" – 15770 NoCe&SoAM EUR  
 2130 WRMI, E, AWR Wavescan – 15770 NoCe&SoAM EUR  
 2145 WRMI, E, "Viva Miami" – 9955 NoCe&SoAM EUR  
 2240 RRI Bucharest, E, "DX Mailbag" –  
 9740del 9790 11650del 11800 EaAS EUR  
 2300 WRMI, G, RAE Buenos Aires DX – 7570 7730irr CeNoAM  
 2300 WRMI, E, "Viva Miami" – 9395 NoCe&SoAM EUR  
 2300 RRI Bucharest, Sp – 11800 13660 AM  
 2330 WRMI, E, "World of Radio" – 9395 NoCe&SoAM EUR

**Wednesday**

0030 WRMI, E, "World of Radio" – 9395 NoCe&SoAM EUR  
 0040 RRI Bucharest, E, "Listeners Letterbox" -  
 9550 11620delete NoAM  
 0100 WRMI, Sp, La Rosa de Tokio – 5010 9955 CeAM EUR  
 0145 WRMI, E, 'CQ Calling' – 5850 NoCe&SoAM EUR  
 0200 RRI Bucharest, Sp – 9700 17760 AM  
 0340 R Taiwan Internat, E, "Status Update" – 9405 15320? AS  
 0340 RRI Bucharest, E, "DX Mailbag" –  
 9850 11620del 15330-drm 17790del NoAM SoAS  
 0532 Radio NZ Pacific, E, BBC Digital Planet – 15720 PAC  
 0800 WRMI, E, "Hobart Radio Int" – 5850 NoCe&SoAM  
 0930 WRMI, E, RAE "ARG DXers Special" – 9455 NoSoAM  
 1000 Unique R. Australia, E, World of Radio – 5035usb PAC  
 1030 Unique R. Australia, E, InternatRadio report – 5035usb PAC  
 1100 WRMI, G, RAE Buenos Aires DX – 15770 EUR NoAM  
 1101 KTWR Guam, E, 'DXers Diary IND' – 11965 SoAS  
 1200 Radio Slovakia Internat, "Listeners Tribune" G, Kall – 6005  
 1232 BBCWS E, "Tech Life" – DAB UK EUR  
 1300 WRMI, Sp, "Antena DX" – 9955 NoCe&SoAM EUR  
 1330 WRMI, E, "Australian DX Report" – 9955 So&NoAM EUR  
 1335 DeutschlandFunk Cologne, G, Medias-res  
 1415 TWR, E, 'DXers Diary INDIA' – 13690-gav SoAS  
 1430 WRMI, E, "Hobart Radio Int" – 9955 No&SoAM EUR  
 1530 BBC R4 "The Media Show" – 198LW MW FM DAB UK  
 1700 Radio Slovakia Internat, "Listeners Tribune" G, Kall – 3985  
 1800 SW Radio Winsen "CQ Serenade" – 3975 EUR irreg.  
 1800 WRMI, E, RAE Buenos Aires – Internet only AM EUR  
 1846 VoVTN Hanoi Son Tay, G, "Letterbox" 9730 11885 EUR  
 1930 RHC Habana, E, RHC Mailbag Show – 15140 EUR  
 1930 WWCR, E, "Ask WWCR" – 15825 NoAM EUR NoWeAF  
 1932 BBCWS E, "Tech Life" – 7265mdg 7445mdg 9410uae  
 9890sao 11810asc 15400asc NE ME AF  
 2016 VoVTN Hanoi Son Tay, G, "Letterbox" 9730 11885 EUR  
 2030 BBC R4 "The Media Show" – 198LW FM DAB UK  
 2100 WBCQ, E, World of Radio – 7490v NoWeAM  
 2210 REE Madrid, E, Letters Mailbag – irregular, 2 x monthly  
 11670 15520 17715 17855 NE, EaAF, AF, SoAM, NoAM  
 2230 WRMI, E, AWR Wavescan – 9955 NoCeSoAM EUR  
 2330 WRMI, E, RAE "ARG DXers Special" – 7570 7730irr SoAM  
 2330 RHC Habana, E, Mailbag Show – 5040irr NoAM  
 2330 RHC Habana, E, Mailbag Show – 11880 AF  
 2330 WRMI, E, AWR Wavescan – 9395 No&SoAM EUR

**Thursday**

0000 WRMI, Sp, Frecuencia al Dia – 7780 NoCe&SoAM EUR  
 0030 WRMI, E, "World of Radio" – 9395 NoCe&SoAM EUR  
 0030 WRMI, E, AWR Wavescan – 7780 NoCe&SoAM EUR  
 0030 RHC Habana, E, RHC Mailbag – 6000 9700irr AM  
 0100 WRMI, Sp, Frecuencia al Dia – 5010 NoCe&SoAM  
 0130 WRMI, E, "World of Radio" – 5010 9395 NoCe&SoAM  
 0130 WRMI, Sp, Frecuencia al Dia – 9955 NoCe&SoAM EUR

0200 WRMI, E, RAE Buenos Aires – 5800 AM EUR  
 0200 WRMI, E, "This is a Music Show" digital tests MFSK64 –  
 5850 7730irr NoCe&SoAM EUR  
 0230 RHC Habana, E, Mailbag – 6000 9700irr NoAM  
 0330 WRMI, Sp, Frecuencia al Dia – 7780 NoCe&SoAM EUR  
 0430 RHC Habana, E, Mailbag – 6000 9700irr NoAM  
 0500 WRMI, E, RAE Buenos Aires – 7780 NoSoAM EUR  
 0630 RHC Habana, E, Mailbag – 6000 9700irr NoAM  
 0815 WRMI, E, "CQ Calling" – 5850 AM EUR  
 1000 Radio Slovakia Internat, "Letterbox" G, Kall relay – 6005  
 1100 WRMI, E, RAE "ARG DXers Special" – 15770 NoAM EUR  
 1135 TRT Emirler, G, Hoerbriefkasten – 15350 EUR  
 1200 Radio Slovakia Internat, "Letterbox" G, Kall relay – 6005  
 1300 WRMI, Sp, Frecuencia al Dia – 9955 No&SoAM EUR  
 1335 DeutschlandFunk Cologne, G, Medias-res  
 1430 WRMI, Sp, Frecuencia al Dia – 9955 No&SoAM EUR  
 1444 RRI Bucharest, G, Netz Welt – 9600 11880del EUR  
 1630 Polskie Radio Poland "HBF", G – 1386ltu EUR  
 1700 Radio Slovakia Internat, "Letterbox" G, Kall relay – 3985  
 1735 TRT Emirler, G, Hoerbriefkasten – 9840 EUR  
 1800 SW Radio Winsen "CQ Serenade" – 3975 EUR  
 1844 RRI Bucharest, G, Netz Welt – 7245-drm 9570del EUR  
 2000 WRMI, E, 'Viva Miami' – 15770 NoCe&SoAM EUR  
 2015 WRMI, E, 'CQ Calling' – 15770 NoCe&SoAM EUR  
 2100 WBCQ, E, Amateur Radio Roundtable – 7490v NoAM  
 2100 WRMI, Sp, La Rosa de Tokio – 15770 AM EUR  
 2115 WRMI, E, 'Viva Miami' – 9955 NoCe&SoAM EUR  
 2130 WRMI, E, AWR Wavescan – 9955 NoCeSoAM EUR  
 2235 RHC Habana, Sp, "En Contacto" – 5040 9535 9650  
 11760 11850 13680 13740irr 15230 LatAM  
 2330 WINB, E, "SW Radiogram - digital" AM mode – 9265 NoAM  
 2330 WRMI, E, 'CQ Calling' – 9395 NoCe&SoAM EUR

**Friday**

0000 WRMI, Sp, La Rosa de Tokio – 9395 Ce&SoAM EUR  
 0015 WRMI, E, "CQ Calling" – 9955 NoCe&SoAM EUR  
 0030 WRMI, E, "Viva Miami" – 7780 NoCe&SoAM EUR  
 0045 WRMI, E, "CQ Calling" – 7780 NoCe&SoAM EUR  
 0100 WRMI, E, RAE "ARG DXers Special" – 9395 SoAM  
 0115 WRMI, E, "Viva Miami" – 9955 NoCe&SoAM  
 0130 BBCWS E, "Tech Life" – DAB 198LW UK EUR  
 1413oma 9495tac NE ME SoAS SoEaAS  
 0130 WRMI, E, AWR Wavescan – 5010 NoCe&SoAM EUR  
 0130 WRMI, E, "Viva Miami" – 9395 NoCe&SoAM EUR  
 0530 WRMI, E, "SW Radiogram - digital" AM mode – 7780 NoAM  
 1015 WRMI, E, "Viva Miami" – 5850 NoCe&SoAM EUR  
 1130 WRMI, E, RAE "ARG DXers Special" – 15770 NoAM EUR  
 1230 WRMI, E, AWR Wavescan – 5010 NoCe&SoAM  
 1300 WRMI, E, "SW Radiogram - digital" AM mode –  
 15770 NoAM EUR NoWeAF  
 1335 DeutschlandFunk Cologne, G, Medias-res  
 1400 WINB, E, "SW Radiogram - digital" – DRM mode  
 15755 NoAM NoWeAF EUR  
 1430 WRMI, E, World of Radio – 9955 NoCe&SoAM EUR  
 1500 WRMI, E, AWR Wavescan – 15770 NoCe&SoAM EUR  
 1500 WINB, E, "SW Radiogram - digital" – 15750-drm mode NoAM

1530 BBC R4, E, "Feedback" – LW 198, MW, FM, DAB, online  
 1800 Power Rumpel, RTI Hoererklubecke via ch292 Rohrbach  
 Waal Germany, G **Fri after 2<sup>nd</sup> Sun** – 6070 EUR  
 1900 SW Radio Winsen "CQ Serenade" – 3975 EUR irreg.  
 1910 R TWN-Int via Sofia-BUL, G, Hoererbriefkasten – 5900 EUR  
 2000 IRRS, E, "AWR Wavescan" – 918irr 1323 AM Italia, Italy  
 2010 KBS World Radio Seoul, G, **x-last Fri** – 3955wof EUR  
 2030 IRRS, E, World of Radio – 918irr 1323 AM Italia, Italy  
 2100 WRMI, E, 'Viva Miami' – 15770 NoCe&SoAM EUR  
 2115 WRMI, E, 'CQ Calling' – 15770 NoCe&SoAM EUR  
 2200 WRMI, E, AWR Wavescan – 9955 NoCe&SoAM EUR

## Saturday

0000 WBCQ, E, Allan Weiner Worldwide, Radio Angela+ –  
 irr3265v irr5130v 6160v 7490v  
 0030 WRMI, E, AWR Wavescan – 9395 NoCe&SoAM EUR  
 0030 WRMI, Sp, Frecuencia al Dia – 7780 NoCe&SoAM EUR  
 0130 WRMI, E, World of Radio – 5850 No&SoAM EUR  
 0230 WINB, E, "SW Radiogram - digital" AM mode – 9265 NoAM  
 0400 WBCQ Radio Angela+, E, "World of Radio" – 5130v AM  
 0430 HCJB DX-Medien Weenermoor, G – 3995 EUR  
 0430 HCJB Weenermoor, G, AGDX-px by Olaf Mertens **3<sup>rd</sup>** –  
 DX-Medien **x3<sup>rd</sup> x4<sup>th</sup>**  
 ADXB-OE Suess/ Brazda items **4<sup>th</sup>** 3995 EUR  
 0500 WRMI, Sp, Frecuencia al Dia – 7780 NoCe&SoAM EUR  
 0530 WRMI, E, AWR Wavescan – 7780 NoCe&SoAM EUR  
 0800 WRMI, E, "Viva Miami" – 5850 NoCe&SoAM EUR  
 0800 Jake FM, RTI Hoererklubecke via ch292 Rohrbach Waal  
 Germany, G after **4<sup>th</sup> Sun** – 6070 EUR  
 0804 WDR5 Cologne, 'Toene/Texte/Bilder', G – FM, STL, DAB-S  
 0850 BBCWS E, "Over to You" – DAB UK EUR  
 0900 IRRS via Saftica-ROU, E, Radiocity **3<sup>rd</sup>** – 9510 EUR  
 0900 Radio Delta HOL, E, 'Goes DX' – 6020 EUR  
 0930 WRMI, E, RAE "ARG DXers Special" – 9455 AM EUR  
 0930 HCJB DX-Medien Weenermoor, G – 3995 5920 EUR  
 0930 HCJB Weenermoor, G, AGDX-px by Olaf Mertens **3<sup>rd</sup>** –  
 DX-Medien **x3<sup>rd</sup> x4<sup>th</sup>**  
 ADXB-OE Suess/ Brazda items **4<sup>th</sup>** 3995 5920 EUR  
 1000 SE-TA2, G, MBR Nauen **1<sup>st</sup> Sat** per Quarter – 6095 EUR  
 1000 WRMI, Sp, Frecuencia al Dia – 9955 NoCe&SoAM EUR  
 1045 WRMI, E, "Viva Miami" – 9955 NoCe&SoAM EUR  
 1100 SW Radio Winsen, E, 'CQ Serenade' – 3975 EUR irreg.  
 1100 SM Radio Dessau, via ch292 Rohrbach Waal, G  
**2<sup>nd</sup> Sun** – 6070 EUR  
 1105 DeutschlandRadio Kultur, Berlin, G, 'Breitband Media' –  
 FM, STL Astra, DAB-S  
 1115 WRMI, E, AWR Wavescan – 15770 NoCe&SoAM EUR  
 1135 TRT Emirler, G, Hoerbriefkasten repeat – 15350 EUR  
 1140 RRI Bucharest, E, "Listeners Letterbox" –  
 15130del 15320del 17630 17670 EUR EaAF  
 1230 WRMI, E, AWR Wavescan – 5850 NoCe&SoAM  
 1300 WRMI, E, AWR Wavescan – 9955 15770 No&SoAM EUR

1320 SR2 Saarebruck, G, 'Medien cross und quer' –  
 FM, STL Astra, DAB-S  
 1400 HCJB DX-Medien Weenermoor, G – 3995 5920 EUR  
 1400 HCJB Weenermoor, G, AGDX-px by Olaf Mertens **3<sup>rd</sup>** –  
 DX-Medien **x3<sup>rd</sup> x4<sup>th</sup>**  
 ADXB-OE Suess/ Brazda items **4<sup>th</sup>** 3995 5920 EUR  
 1430 DLF Cologne, G, 'Computer und Kommunikation' –  
 FM, STL Astra, DAB-S  
 1500 SW Radio Winsen, E, 'CQ Serenade' – 6160 EUR  
 1500 SM Radio Dessau, repeat, via ch292 Rohrbach Waal  
 Germany, G – 6070 EUR  
 1600 Radio Sylvia, via ch292 Rohrbach Waal Germany, G  
**1<sup>st</sup> Sat** – 3955 6070 EUR  
 1600 WRN to NoAM, E, World of Radio – EUR AS AF PAC  
 1700 HCJB Weenermoor, G, AGDX-px by Olaf Mertens **3<sup>rd</sup>** –  
 DX-Medien **x3<sup>rd</sup> x4<sup>th</sup>**  
 ADXB-OE Suess/ Brazda items **4<sup>th</sup>** 3995 EUR  
 1735 TRT Emirler, G, Hoerbriefkasten repeat – 9840 EUR  
 1740 RRI Bucharest, E, "DX Mailbag" – 13750-drm EUR  
 1800 IRRS via Kostinbrod-BUL, E, World of Radio – 7295irr.  
 1800 AUT Museumsradio DX-WK Austria – 1476 CeEUR  
 1930 WRMI, E, World of Radio – 15770 Ce&SoAM EUR  
 1930 WRN to NoAM, E, World of Radio – AS AF PAC  
 2000 WRN to NoAM, E, World of Radio – EUR  
 2100 HCJB Weenermoor, G, AGDX-px by Olaf Mertens **3<sup>rd</sup>** –  
 DX-Medien **x3<sup>rd</sup> x4<sup>th</sup>**  
 ADXB-OE Suess/ Brazda items **4<sup>th</sup>** 3995 EUR  
 2106 Radio NZ Pacific, E, Mediawatch – 15720 PAC  
 2115 WRMI, E, "Viva Miami" – 15770 NoCe&SoAM EUR  
 2230 WRMI, E, World of Radio – 5850 15770 AM EUR  
 2232 BBCWS E, "Tech Life" – DAB UK 9440pht EaAS  
 2240 RRI Bucharest, E, "DX Mailbag" –  
 9740del 9790 11650del 11800 EaAS EUR  
 2300 WRMI, E, "SW Radiogram-digital" – 7570 NoAM  
 2300 WBCQ, E, "Radio Timtron Worldwide" – 6160v NoAM  
 2330 WRMI, E, AWR Wavescan – 9395 NoCe&SoAM EUR

## Sunday

0000 E, "The Mighty KBC" / digital tests MFSK – 5960nau EUR  
 0000 WRMI, E, AWR Wavescan – 7780 Ce&SoAM EUR  
 0000 WRMI, E, World of Radio – 9955 Ce&SoAM EUR  
 0015 WRMI, E, "Viva Miami" – 9955 NoCe&SoAM EUR  
 0030 WRMI, E, World of Radio – 7780 Ce&SoAM EUR  
 0034 Nexus IBA/IRRS/IPAR, E, "World of Radio" – webcast  
 0040 RRI Bucharest, E, Listeners Letterbox -  
 9550 11620delete NoAM  
 0100-0500 WBCQ, E, "Shortwave Saturday Night" – 7490v NoAM  
 0130 WRN to NoAM, E, World of Radio – 9395 NoCe&SoAM  
 0200 AWR via Dushanbe-TJK, E, 'AWR Wavescan' –  
 15515 EaAS / SoEaAS / SoAS / CeAS / ME  
 0300 WWCN Nashville, E, "Ask WWCN" – 4840 NoAM EUR  
 0315 WWCN Nashville, E, "Australian DX Report" – 4840 NoAM  
 0330 WWCN Nashville, E, "AWR Wavescan" – 4840 NoAM EUR  
 0330 WRMI, E, AWR Wavescan – 7780 NoCe&SoAM EUR

- 0340 RRI Bucharest, E, "Listeners Letterbox" –  
9850 11620del 15330-drm 17790del NoAM SoAS
- 0430 HCJB DX-Medien Weenermoor, G – 3995 EUR
- 0450 BBCWS E, "Over to You" – 12095mdg AF
- 0500 WRMI, Sp, La Rosa de Tokio – 7780 Ce&SoAM EUR
- 0600 VoHope Zambia, "AWR Wavescan" E, CeAF SoAF –  
9680voh 13680voh - depends of main power
- 0700 Radio Delta HOL, E, 'Greetings px' – 6020 11730 EUR
- 0800 Unique R Australia, E, "World of Radio" – 5035 PAC
- 0800 Welle370 via MBR NAU/ISS, G – **1<sup>st</sup> Sun** – 6140 EUR
- 0800 Radio Delta HOL, E, 'Delta Goes DX' – 6020 11730 EUR
- 0830 Unique R Australia, E, International Report – 5035 PAC
- 0844 InfoRadio, Rundfunk Berlin-Brandenburg (rbb), G, irreg.  
'Medienmagazin' – FM, DAB+, STL Astra digital
- 0900 DARC Radio via ORS Moosbrunn relay, G – 6055
- 0900 DARC Radio via ch292 Rohrbach Waal, G – 6070 9670
- 0900 SW Radio Winsen, E, 'CQ Serenade' – 6160 EUR
- 0930 WRMI, E, AWR Wavescan – 9455 NoCe&SoAM EUR
- 0930 HCJB DX-Medien Weenermoor, G – 3995 5920 EUR
- 0945 WWCN Nashville, E, "Ask WWCN" – 4840 NoAM
- 1000 Radio Delta HOL, E, 'Goes DX' – 6020 EUR
- 1000 Joystick, G, via ORS Moosbrunn **1<sup>st</sup> Sun** – 7330 EUR
- 1010 Radio NZ Pacific, E, Mediawatch – 11725 PAC
- 1026 KTWR Guam, E, 'DXers Diary' – 15200-drm mode AS
- 1030 WRMI, E, AWR Wavescan – 5850 NoCe&SoAM EUR
- 1030 WRMI, E, "World of Radio" – 9955 NoCe&SoAM EUR
- 1030 R Slovakia, E, "Listeners Tribune" Kall relay – 6005 EUR
- 1030 WRN to NoAM, E, World of Radio – AS AF PAC
- 1100 IRRS via Saftica-ROU, E, – 9510 EUR
- 1100 SM Radio Dessau, "HBF", via ch292 Rohrbach Waal  
Germany, G **2<sup>nd</sup> Sun** – 6070 EUR
- 1100 Welle370 via ch292 Rohrbach, G **4<sup>th</sup> Sun** – 6070 EUR
- 1132 BBCWS E, "Tech Life" – 9410pht FE AS / SoAS
- 1140 RRI Bucharest, E, "Listeners Letterbox" –  
15130del 15320del 17630 17670 EUR EaAF
- 1200 Korches Radio, RTI DX-Tipps via ch292 Rohrbach Waal  
Germany, G **2<sup>nd</sup> 3<sup>rd</sup>** – 6070 EUR
- 1200 Jake FM, RTI Hoererklubecke via ch292 Rohrbach Waal  
Germany, G after **4<sup>th</sup> Sun** – 6070 EUR
- 1205 BR24 Munich, Medienmagazin, G –  
FM, STL Astra digital, DAB+, Livestream
- 1230 R Slovakia, E, "Listeners Tribune" Kall relay – 6005 EUR
- 1230 WRN to NoAM, E, World of Radio – EUR
- 1300 SW Radio Winsen, E, 'CQ Serenade' – 3975 6160 EUR
- 1330 WRMI, E, World of Radio – 9955 NoCe&SoAM EUR
- 1335 RHC Habana, Sp, "En Contacto" – 9535 9650 11760  
13700 13740 15140 15230 NoAM/ LatAM
- 1400 R Slovakia, E, "Listeners Tribune" Kall relay – 6005 EUR
- 1400 AWR via Dushanbe-TJK, E, 'AWR Wavescan' –  
15515 EaAS / SoEaAS / SoAS / CeAS / ME
- 1400 HCJB DX-Medien Weenermoor, G – 3995 5920 EUR
- 1414 RRI Bucharest, G, Funkbriefkasten – 9600 11880 EUR
- 1430 WRMI, E, AWR Wavescan – 9955 NoCe&SoAM EUR
- 1435 BR24 Munich, 'Computermagazin', G –  
FM, STL Astra digital, DAB+, Livestream [irreg.]
- 1500 KTWR Guam, E, "DXers Diary" – 15390-drm AS EUR
- 1500 ch292, E, HRI DX Extra SW and Radio Nx **3<sup>rd</sup>** – 6070
- 1500 HCJB DX-Medien Weenermoor, G – 3995 5920 EUR
- 1530 AWR Wavescan Guam, E, SoEaAS / SoAS – 15670gum
- 1544 InfoRadio, Rundfunk Berlin-Brandenburg (rbb), G, irreg.  
'Medienmagazin' – FM, DAB+, STL Astra digital
- 1550 IRIB Iran, E, "Listeners Special" – 11645 SoAS AUS NZL
- 1600 SW Radio Winsen, E, 'CQ Serenade' – 6160 EUR
- 1600 AWR Wavescan Guam, E, SoEaAS / SoAS – 12040gum
- 1630 Polskie Radio Poland "HBF", G – 1386ltu EUR
- 1700 HCJB DX-Medien Weenermoor, G – 3995 EUR
- 1700 Korches Radio, RTI DX-Tipps via ch292 Rohrbach Waal  
Germany, G **2<sup>nd</sup> 3<sup>rd</sup>** – 6070 EUR
- 1700 AUT Museumsradio ISW P. Plattenkiste – 1476 CeEUR
- 1730 R Slovakia, E, "Listeners Tribune" Kall relay – 3985 EUR
- 1740 RRI Bucharest, E, "Letterbox" – 13750-drm 15180 EUR
- 1800 VoHope Zambia, "AWR Wavescan" E, CeAF SoAF –  
4965voh 6065voh - depends of local main power
- 1800 Power Rumpel, RTI Hoererklubecke via ch292 Rohrbach  
Waal Germany, G – 6070 EUR
- 1814 RRI Bucharest, G, Funkbriefkasten – 7245-drm EUR
- 1820 Voice of Indonesia, G, "HBF" – 3325pal 4750cim SoEaAS
- 1835 BR24 Munich, 'Computermagazin', G –  
FM, STL Astra digital, DAB+, Livestream [irreg.]
- 1900 RRI Bucharest, Sp – 9610delete 11850 EUR WeAF
- 1900 DARC Radio via ch292 Rohrbach Waal, G – 3955 EUR
- 1902 BBC R4, E, "Feedback" – LW 198, MW, FM, DAB, online
- 1925 RHC Habana, E, RHC Mailbag Show – 15140 EUR
- 1930 WRMI, E, AWR Wavescan – 15770 EUR NoAM
- 1950 IRIB Iran, E, "Listeners Special" – 9835 9855 EUR AF
- 2000 IRRS, E, "World of Radio" – 918irr 1323 AM Italia, Italy
- 2000 WRN to NoAM, E, World of Radio – EUR AS AF PAC
- 2030 IRRS, E, "AWR Wavescan" – 918irr 1323 AM Italia, Italy
- 2100 SW Radio Winsen, E, 'CQ Serenade' – 3975 EUR
- 2100 RRI Bucharest, Sp – 13650-drm 15130del LatAM
- 2100 WRMI, G, RAE Buenos Aires DX – 15770 EUR NoAM
- 2100 HCJB DX-Medien Weenermoor, G – 3995 EUR
- 2150 BBCWS E, "Over to You" – DAB UK EUR
- 2200 KSDA AWR Guam, E, AWR Wavescan – 15440gum FE AS
- 2230 WRMI, E, AWR Wavescan – 5850 15770 AM EUR
- 2230 WRMI, E, "Hobart Radio Int" – 7570 9955 No&SoAM EUR
- 2235 RHC Habana, Sp, "En Contacto" – 5040irr 9535 9710irr  
11760 11850 13680 13740irr 15230 LatAM
- 2240 RRI Bucharest, E, "DX Mailbag" –  
9740del 9790 11650del 11800 EaAS EUR
- 2300 WRMI, E, AWR Wavescan – 7570 AM EUR
- 2300 WBCQ, E, "Radio Timtron Worldwide" – 6160v NoAM
- 2300 RRI Bucharest, Sp – 11800 13660 AM
- 2315 WRMI, E, "Viva Miami" – 9395 NoCe&SoAM EUR
- 2330 WRMI, E, "Hobart Radio Int" – 7570 NoCe&SoAM
- 2340 RHC Habana, E, Mailbag Show – 5040irr NoAM EUR
- 2340 RHC Habana, E, RHC Mailbag Show – 11880 AF

(thanks to BrDXC-UK British DX Club A-23 DX px file item  
on <[www.bdx.org.uk](http://www.bdx.org.uk)> )

# Hörfahrplan Deutsch

Stand: 11.08. 2023

**Zeit (UTC) Station, Programm Frequenzen, Tag, Standort**

..... 00:00 .....

0000-0300 HCJB **3995/Wee, 5920/Wee**  
 0000-2400 „Funklust“ **15785\*\*/Erlangen,**  
 (ex biteXpress)

..... 01:00 .....

..... 02:00 .....

..... 03:00 .....

..... 04:00 .....

0400-0430 Andenstimme 6050/Ecuador; Sa #  
 0400-2200 HCJB **3995/Wee, 5920/Wee**

..... 05:00 .....

0500-0533 ORF 1 Wien **6155; Mo-Sa**  
 0503-0530 MW Heukelbach **5920/Wee, 7365/Wee**  
 0530-2000 R HCJB **3995/Wee**

..... 06:00 .....

0600-0628 R Rumänien Int. **9700, 11620(\*)**  
 0600-0630 DWD **5905/PIN, 6180/PIN**

0600-1800 R Marabu **6150/R Europa 24; multi**  
**Plan: -20:00**

0600-2400 „Channel 292“ **6070/ROW, 9670/ROW**  
**(Plan); mehrere**  
**(regelmäßige) Programm-**  
**anbieter; auch E / Holl**

..... 07:00 .....

0700-1700 R Mi Amigo **6085/Eifel ; D+E**  
 0720-0730 R Bukarest 603, 909, 1197, 1314, 1593;  
 So

..... 08:00 .....

0800-0900 Welle 370 **6140/OE; 1. So**  
 0800-0900 WLC **9330/WBCQ**  
 0800-1000 R Pecs 873, 1188  
 0800-1300 R HCJB **7365/Wee**

..... 09:00 .....

0900-1000 R DARC **6055/OE, 6070/ROW,**  
**9670/ROW; So**

..... 10:00 .....

1000-1100 R Joystick **7330/OE; 1. So**  
 1000-1100 R Temesvar 630  
 1000-1100 R Mi Amigo **6085/Eifel; Fr**  
 1000-1200 R SE-TA **6095/N 1. Sa Quartal,**  
**6115/Ge; 2. Sa Quartal ; + irr.**  
 1030-1100 Ev. Missionsgem. **6055/N; Sa+So**

..... 11:00 .....

1100-1200 RAE **7730/FL, 15770/FL; Mi**  
 1100-1200 R Bukarest 603, 909, 1197, 1314, 1593;  
 Mo-Sa  
 1100-1200 welle 370 **6070/ROW; 4. So**  
 1130-1225 TRT Ankara **15350**

..... 12:00 .....

1200-1230 DWD **5905/PIN, 6180/PIN**  
 1200-1030 R Slowakei Int. **6005/Eifel**  
 1200-1315 welle 370 **810/Berlin; LP; 3. So**

..... 13:00 .....

1330-1358 R Slowakei Int. **6005/Eifel**

..... 14:00 .....

1400-1455 R Rumänien Int. **9600, 11880**

..... 15:00 .....

1500-1600 R DARC **6070/ROW, 9760/ROW; Mo**  
 1530-1600 MW Heukelbach **3995/Wee, 5920/Wee**

..... 16:00 .....

1600-1630 DWD **5905/PIN, 6180/PIN**  
 1600-1655 St. Koreas, Py. **9425, 12015**  
 1600-1700 RAE **15770/FL; Di**  
 Buenos Aires  
 1630-1700 Polskie R **1386/LTU**  
 1600-1700 SRF **3985/Eifel**  
 Echo der Zeit

..... 17:00 .....

1700-1730 R Slowakei **3985/Eifel**  
 1700-1800 Korches-Radio **6070/ROW; 2. + 3. So**  
 1730-1825 TRT Ankara **9840**

..... 18:00 .....

1800-1855 St. Koreas Py. **9425, 12015**  
 1800-1900 R DARC **3955/ROW**  
 1800-1900 St. Indonesiens 3325, 4750 (SOAs)  
 1800-1900 R Neumarkt **1197, 1323, 1593; Mo-Sa**  
 1800-1900 R Rumänien Int. **7245\*, 9570**  
 1830-1900 St Vietnams **(7280), 9730, 11885**



..... 19:00 .....

1900-1930 R Taiwan Int.      **5900/BUL**  
 1900-1955 St. Koreas, Py.    **9425, 12015**  
 1900-2000 R Kairo            **(9570) 9410 #**  
 1930-1950 RT Tunis          963 (NAf)

..... 20:00 .....

2000-2030 DWD                **5905/PIN, 6180/PIN**  
 2000-2030 St Vietnams       **(7280,) 9730, 11885**  
 2000-2100 KBS World        **3955/Wof**  
 2000-2100 ZP 30 (Arg)       **3995/Wee (Di-Sa)**  
 2000-2200 R Pecs             **873, 1188**

..... 21:00 .....

..... 22:00 .....

..... 23:00 .....

2300-2308 R Ukraine Int.    **1386/LTU**

.....

**Die Deutsche Welle strahlt seit 2011 keine Sendungen  
mehr in Deutsch auf Kurzwelle aus.**

**Zeitangaben in UTC = Mitteleuropäische Sommerzeit  
(MESZ) minus 2 Stunden /  
Time is UTC = MEST minus 2 hours**

**Abkürzungen / abbreviations:**

bei Station:

Int. = International, R = Radio, St = Stimme, Vo = Voice of

**Senderstandorte bei Frequenz / transmitter sites:**

ARM = Armenien, BUL = Bulgarien, Eifel = Kall Krekel  
(DL), Ge = Gera, LTU = Litauen, N = Nauen (DL), OE =  
Moosbrunn / Österreich, PIN = Pinneberg (DL), ROW =  
Rohrbach Waal (DL), Wee = Weenermoor (DL), Wof = Woof-  
ferton / GB.

**Technischer Hinweis bei Frequenz:**

/USB = oberes Seitenband, /LSB = unteres Seitenband,  
/v = variabel, (multi) verschiedene. Sprachen und Anbieter  
# = meist schwieriger Empfang  
bzw. gelegentlicher Senderausfall,  
## = derzeit inaktiv  
alt = alternativ  
x Frequenzänderung möglich  
\* = digitale Sendungen (DRM),  
LP / \*\* mit geringer Sendeleistung (max 500W)  
(DRM-Empfang nur mit geeigneten Empfängern möglich)

**Es sind nur regelmäßige Sendungen auf KW bzw. MW  
gelistet, Sondersendungen s. aktuelle News.**

Die Auflistung erhebt keinen Anspruch auf Vollständigkeit,  
alle Angaben erfolgen nach bestem Wissen und ohne Gewähr.  
Einige Sendungen sind auch außerhalb der eigentlichen Ziel-  
gebiete hörbar. Kurzfristig sind Änderungen möglich, um z.B.  
störenden Stationen auszuweichen.

Mittelwellensendungen sind stets für die Region gedacht.

Kleinsender in DL (max 500 W ERP) sind auf

[www.am-radio-stations.de](http://www.am-radio-stations.de) gelistet.

[www.plattenkiste.radio](http://www.plattenkiste.radio). (Österreich)

Es gibt noch eine Reihe lokaler Sender außerhalb Europas mit  
teils geringer Leistung (z.B. in den USA, Kanada, Brasilien,  
Australien) die stundenweise deutschsprachige Programme  
ausstrahlen.

**Die Sendeperiode A23 dauert bis 28. Oktober 2023.**

**Aktuelle Hinweise auf Änderungen und Ergänzungen sind  
stets willkommen an:**

**Redaktion: Walter Eibl, D-91074 Herzogenaurach**

**e-mail: >we@kwrs.de< oder >we@wwdxc.de<**

## The Story of the Wireless Operator who Sent the First Morse Code Transmission Across the Atlantic

Monday, December 12, is the anniversary of one of the world's great wireless events, for it was on that date in the year 1901 that Guglielmo Marconi achieved the first transmission of a wireless signal across the Atlantic Ocean. On this, the 121st anniversary, we examine that historic event once again, and we present the story of the Wireless Operator who sent that original Morse Code signal from Poldhu in Cornwall, England to St. John's in Newfoundland, North America, a distance of 2,128 miles.

There are many critics who like to suggest that Marconi did not hear the three dots that form the letter S in Morse Code on that historic occasion, and that instead he heard the crash of the lightning strikes during the strong and windy thunderstorms. However, we would suggest that the critics are forgetting two important matters; propagation across a saltwater pathway, and the wintry weather pattern.

The available technical information indicates that the Morse Code signal was transmitted from the Marconi wireless station at Poldhu on approximately 366 metres, mediumwave 820 kHz. The fan shaped circular antenna was supported from masts standing 160 feet high, and the power to the antenna is estimated at somewhere between 60 kW and 100 kW.

The Marconi receiving system at Signal Tower near St. John's in Newfoundland was a 500 ft. trailing wire supported from a kite, and a wireless receiver that he described as a simple coherer detector with a telephone earpiece. According to the entries in Marconi's diary, he and his assistant George Kemp heard the S across the Atlantic some 20 different times during their two days of successful experimentation, Thursday and Friday, December 12 and 13, 1901.

Back during the year 1957, my young wife and I were traveling with my parents on a journey north from Port Augusta in South Australia towards the outback desert areas, a location where my Mother spent her childhood years. My Father had the mediumwave car radio tuned to a program of pleasant music, and we were amazed when the announcer gave the station identification as 2YA Wellington, in New Zealand. In those days 2YA was on the air with 60 kW on 570 kHz.

That radio signal had traveled 2,100 miles across the saltwater Tasman Sea from Titahi Bay in the North Island of New Zealand to the fringe desert areas of Australia, it was midday in New Zealand and mid-morning in South Australia. That remarkable long distance radio reception in the South Pacific with a clear listenable mediumwave signal in full daylight illustrates the fact that the Marconi signal over a saltwater pathway in the middle of winter from England to Newfoundland was not an exaggeration. They identified the signal on 20 separate occasions.

The Wireless Operator at the Marconi wireless station in Poldhu on that epic occasion back in December 1901 was 16 year old Sidney Benjamin Maddams. He was born in England on April 17, 1885, and as a young man he learned Morse Code at the Government Telegraphy School in London. His first work assignment was with the Central Telegraphy Office, which employed 5,000 men and women on their London and provincial circuits.

Young Maddams was assigned the responsibility of sending the letter S in Morse Code at 15 minute intervals from 3 pm to 7 pm (GMT-UTC), for three days beginning on Wednesday, December 11 (1901). On the first day (Wednesday), Marconi and Kemp listened in, but heard nothing. However, on the Thursday and Friday they heard the signal on at least a score of occasions.

Less than two years later (1903), young Sidney, now 18 years old, was in San Francisco on the west coast of the United States where he built a wireless communication station in the Palace Hotel for another noted wireless pioneer, Dr. Lee de Forest. Maddams stayed on at this station as an operator, though it was the other operator, Tim Furlong, who assigned the rather logical callsign PH (Palace Hotel) to this new station.

Five years later (1908), Maddams heard music on the wireless for the very first time. This historic music broadcast was coming from one of the ships in the Great White Fleet that was anchored in the Bay area.

Their music transmission came from the ship's brass band, and also from gramophone recordings, and the melody that Maddams remembered hearing was the tuneful Merry Widow Waltz. That was the music you heard at the beginning of our program today. Maddams reported his monitoring observations to the San Francisco Examiner newspaper and they awarded him \$10 for his news report.

Two years later (1910), Maddams was on service in Honolulu, Hawaii, where he married Laura Marian Townsend in the St. Andrews Cathedral. He was 25 and she was 23. They subsequently celebrated the birth of two children, Marion and George.

After a short stint at sea as the Wireless Officer aboard the Hilonian, Maddams secured an appointment as the operator at the new Marconi communication station at Kahuku on the northern edge of the main island of Oahu. That station was built by Arthur Isbell, though Maddams gave it the original callsign HU.

Two years later (1912), the Federal Telegraph Company constructed their own wireless communication station at Heeia Point at the bay on the east coast of the main Hawaiian island of Oahu, and they appointed Maddams as the manager and chief operator. Interestingly, his wife Laura was also an operator at the same station.

Two more moves took them to Sonoma and then to Palo Alto, both in California, and then back again to Honolulu where he served with Mackay Radio, from which he retired in 1943. At the end of an illustrious wireless and radio career, Sidney Benjamin Maddams died in Honolulu at the age of 84.

(Dr. Adrian M. Peterson, AWR Wavescan)

# WORLDWIDE DX CLUB

WORLDWIDE DX CLUB, founded in 1966, does not claim to be the biggest or best DX club in the world. Nevertheless, it offers its members and subscribers a rather good monthly bulletin (mainly in English) entitled "DX MAGAZINE" with up-to-date information on most aspects of DX'ing at the reasonable price of €18.00, £16.30 or US\$20.10 per year (air mail: €21.60, £19.60 or US\$24.15).

Since WORLDWIDE DX CLUB is the "International Department" of ARBEITSGEMEINSCHAFT DX (AGDX), the head organization of the German language DX clubs, it is able to offer its members and subscribers another DX publication in German entitled "Radio-Kurier - weltweit hören". This is jointly issued by the German DX organizations ADDX and AGDX and is available for €59.00 per year inside Germany; other countries: €70.00, £63.35 or US\$78.29. "Radio-Kurier - weltweit hören" ordered together with "DX MAGAZINE": €74.00 inside Germany; other countries: €85.00, £76.90 or US\$94.95.

Both publications, "DX MAGAZINE" as well as "Radio Kurier - weltweit hören", are also available as PDF files. If you decide to receive this version, a worldwide subscription rate of €9.00, £8.15 or US\$10.05 applicable for "DX MAGAZINE". "Radio Kurier - weltweit hören" is available for €35.00, £29.65 or US\$47.65, both publications together for €41.00, £37.15 or US\$45.80.

WORLDWIDE DX CLUB has currently the following special publications available:

1. "REPORTING GUIDE", published by the EUROPEAN DX COUNCIL (€2.00 or 2 IRC's).
2. "EDXC RADIO COUNTRIES LIST 2022", published by the EUROPEAN DX COUNCIL (€2.00 or 2 IRC's).

These prices include postage and packing. Delivery against advance payment by transfer to our bank accounts at Raiffeisenbank Graevenwiesbach (IBAN: DE75 5006 9345 0100 0199 84 - BIC/SWIFT-Code: GENODE51GWB) or ING/Netherlands (IBAN: NL08 INGB 0003 8228 40 - BIC/SWIFT-Code: INGBNL2A), PayPal, cheque in € drawn on a German bank (otherwise please add €5.00 for bank charges) or cash in any convertible currency.

Die obige Preise enthalten Porto und Verpackung. Lieferung gegen Vorauszahlung durch Überweisung, Scheck in € (gezogen auf eine deutsche Bank, sonst € 5,00 zusätzlich für Bankgebühren) oder PayPal. Konten: Raiffeisenbank Grävenwiesbach (IBAN: DE75 5006 9345 0100 0199 84 - BIC/SWIFT-Code: GENODE51GWB) und ING/Niederlande (IBAN: NL08 INGB 0003 8228 40 - BIC/SWIFT-Code: INGBNL2A).

For further information on WORLDWIDE DX CLUB please write to:  
WORLDWIDE DX CLUB, Postfach 1214, D-61282 Bad Homburg, GERMANY (e-mail: <info@wwdxc.de>), or visit us in the Internet at <<http://www.wwdxc.de>>.

# “Secret” Frequencies for SDR Fun Worldwide Broadcast and Utility Radio Stations

Up-to-date frequencies, schedules and digital data codes for 2023!

The screenshot shows the go2MONITOR software interface. The main content window displays the following decoded text:

```
Decoded text
12:31:56 - 12:32:00 [4.5s], 20221002.123155.0972_10002_12.dec

All(out1)
Ground Station ID : 10 (MUAN - SOUTH KOREA - LAT 35 1 56 N LON 126 14 19 E)
Number aircraft addresses : 1
AirID: 89 DDR: 300 NLP: 1
[Unnumbered Data] - LPDU
LPDU-Len : 144
CRC LPDU : ok
[[ACARS Data Block]]
Raw Data:
2.B-309A-RAN-HELLO CAPT, WE NOTICE THAT MU2284 IS OFFSET THE PLANED
ROUTE OVER 100KM .PLZ CONFIRM THE REASON.THX FM:010-81679811/2.
```

Below the decoded text, the interface shows various status indicators and flight information:

- HACARS mode: 2 Aircraft reg: ..B-LXM
- Message label: C1 Block id: V [Uplink]
- Message content:- .HKGASCX 302032
- AGM AN B-LXM/FI CX0845/GL H16/MA 7871 - CX845/01-OCT-2022
- FLIGHT INFO: BAY S49 BAGGAGE CAROUSEL 9 NEXT SERVICE CX271 ETD 16:15U
- FANS-1/A CPDLC Message: CPDLC Uplink Message: Header: Msg ID: 3 Timestamp: 10:49:54 Message data: [freetext] I CAN HEAR A TRANSMISSION FROM YOU BUT CANNOT HEAR YOUR VOICE [freetext] CAN YOU TRY A DIFFERENT MICROPHONE
- Parsed: ACARS: Reassembly: skipped Reg: .B-1169

## 2023 Shortwave Frequency Guide - EUR 45

350 pages. 13,300 entries with all broadcast and professional utility stations worldwide. Latest schedules for 2023. Clearly arranged and really user-friendly. 27th edition!

## 2023 Super Frequency List CD - EUR 30

4,000 shortwave broadcast frequencies. 9,300 frequencies of utility radio stations, plus 24,000 formerly active frequencies. 1,000 fascinating new digital data decoder screenshots. 29th edition!

## 2023/2024 Guide to Utility Radio Stations - EUR 55 *plus Supplement Jan 2024*

550+16 pages. 9,300 frequencies and 240 digital data / SDR screenshots. Frequencies, stations, call signs, codes, abbreviations, meteo/NAVTEX/press schedules, and much more. 32nd edition!

### Special package prices available:

**Safe 15 EUR:** SWFG + UTG = 85 EUR. SWFG + CD = 60 EUR. UTG + CD = 70 EUR.

**Safe 20 EUR:** SW Frequency Guide + Utility Stations Guide + CD = 110 EUR.

Payment by Mastercard, Visa, bank, cash (EUR only). No cheques! Worldwide postage is 9 EUR/kg. See our website and free 2023 catalogue for more products, detailed descriptions, recommendations from all over the world, and hundreds of the very latest radio monitoring screenshots. We've been leading in this field for 55 years!