

6 - 2013 € 1,30

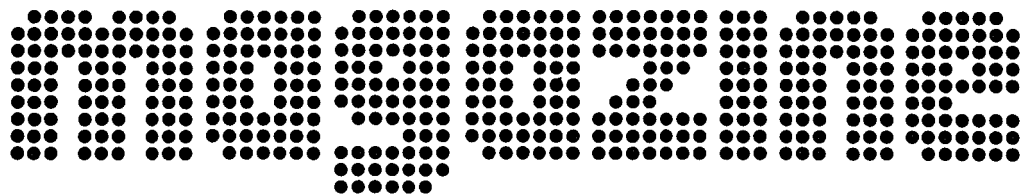
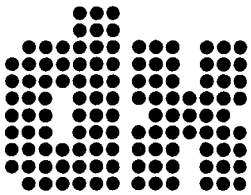
BBC ORTF
ADIO MOSKOU
NDR RAI TVR



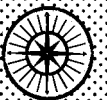
ISSN 0175-6877



9 770175 687009



WORLD WIDE DX CLUB



Staff of WORLDWIDE DX CLUB:

- PRESIDENT AND CHIEF EDITOR** . . ✉ WWDXC Headquarters, Michael Bethge, Postfach 12 14, D-61282 Bad Homburg, Germany
☎ daytime +49-6102-2861, ☎ evening/weekend +49-6172-123118
☎ +49-6172-123117 ● E-Mail: mail@wwdxc.de
- BROADCASTING NEWS EDITOR** . . ✉ Walter Eibl, Postfach 15 45, D-91005 Erlangen, Germany
E-Mail: news@wwdxc.de
- LOGBOOK EDITOR** ✉ Ashok Kumar Bose, Unit # 28, 7035, Rexwood Road, Mississauga, Ontario, L4T 4M6, Canada ● E-Mail: logbook@wwdxc.de
- OSL CORNER EDITOR** ✉ Kanwar Sandhu, 1084 Beauty Avenue, Winnipeg, Manitoba, R2P 1G5, Canada ● E-Mail: qsl@wwdxc.de
- TOP NEWS EDITOR (Internet)** ✉ Wolfgang Büschel, Hoffeld, Sprollstrasse 87, D-70597 Stuttgart, Germany ● E-Mail: topnews@wwdxc.de
- TREASURER & SECRETARY** ✉ Karin Bethge, Urseler Strasse 18, D-61348 Bad Homburg, Germany
- NEWCOMER SERVICE OF AGDX** . . ✉ Hobby-Beratung, c/o AGDX, Postfach 12 14, D-61282 Bad Homburg, Germany (please enclose return postage)

Each of the editors mentioned above is self-responsible for the contents of his composed column. Furthermore, we cannot be responsible for the contents of advertisements published in DX MAGAZINE.

We have no fixed deadlines. Contributions may be sent either to WWDXC Headquarters or directly to our editors at any time. If you send your contributions to WWDXC Headquarters, please do not forget to write all contributions for the different sections on separate sheets of paper, so that we are able to distribute them to the competent section editors.

- WORLDWIDE DX CLUB homepage in the Internet at: <<http://www.wwdxc.de>>
- Weekly "TopNews" by Wolfgang Büschel at: <<http://topnews.wwdxc.de>> (available free of charge by E-Mail to our members on request)
- Latest DRM schedule at: <<http://www.wwdxc.de/drm.htm>>



DX MAGAZINE is the monthly publication of WORLDWIDE DX CLUB, Postfach 12 14, D-61282 Bad Homburg, Germany. Price for a single copy: € 1.30 or 2 International Reply Coupons (IRC's); annual subscription rate: € 15.60 or 16 IRC's. Other currencies and air mail rates on request. Cover: Peter Pohle + Jürgen Kauer (KAVOP)



DX MAGAZINE No. 6

Vol. XLVIII

June 2013

Hello again,

Welcome to another issue of our DX MAGAZINE. I have no news to report from inside the club this month - therefore let's just start with our usual news from outside the club - only one item this month:

The **WRTH editorial team** are pleased to announce that the Summer (A) Season broadcast schedules file is now available to download for free from <<http://www.wrth.com>> just follow the link on the front page (updates). Included in this file are: Broadcast schedules for international and clandestine/target broadcasters, international broadcasts in DRM, International frequency listing, and selected language broadcasts. Also included is a decode table for site and target area codes. The 80 page file is just over 2MB in size and in PDF format (with bookmarks to assist in navigating between sections) and unique section page numbering to assist with printing. We hope you find this file a useful accompaniment to the printed WRTH.

(Sean D. Gilbert, International Editor - World Radio TV Handbook)

And with this best wishes and good DX until next month from

NEWS ABOUT BROADCASTING (+other) STATIONS

Walter Eibl · Postfach 15 45 · D-91005 Erlangen · GERMANY

GREECE – The Greek government has ordered ERT to shut down immediately, per decret, TV and Radio as well. There are strikes ongoing therefore. ERT should be reopened within "some months" (may be years ... as to Greek tradition ...) in a slim format – "naturally" rid of real and critical journalists some voices say. SW transmitters are active, but only with discussion programme, several times switched on and off Some former ERT MW QRGs now bear oppositional radio programmes. (we, June 12)

See also:

<<http://www.spiegel.de/kultur/gesellschaft/xenia-kounalaki-zu-ert-schliessung-in-griechenland-a-905379.html>> and some more actual reports alike at ARTE.TV

ANTARCTICA (ARGENTINA) - LRA36 Radio Nacional Arcangel San Gabriel. Per TLC with the operator at Base Esperanza, Sergio Lucero, he confirms the sked of LRA36 as Mo to Fr 1800-2100 UT. The 10 kW original transmitter has been repaired, but due to power restrictions (a small power generator) the current output is 1.2 to 1.5 kW. (Alejandro -lvarez, LU8YD, Neuquen-ARG, in Condiglist YG, May 30)

ARGENTINA - New A-13 schedule of Radio Argentina Exterior (RAE) from May 13:

1000-1100 on 6060 # BUE 100 kW / non-dir to SoAm Chinese Mon-Fri, new sce
 1000-1100 on 15344.8 BUE 100 kW / 335 deg to EaAs Chinese Mon-Fri, new sce
 1100-1200 on 6060 # BUE 100 kW / non-dir to SoAm Japanese Mon-Fri, ex 10-11
 1100-1200 on 15344.8 BUE 100 kW / 335 deg to EaAs Japanese Mon-Fri, ex 10-11
 1200-1300 on 6060 # BUE 100 kW / non-dir to SoAm Portuguese Mon-Fri, ex 11-12
 1200-1300 on 15344.8 BUE 100 kW / 335 deg to SoAm Portuguese Mon-Fri, ex 11-12
 1300-1500 on 6060 # BUE 100 kW / non-dir to SoAm Spanish Mon-Fri, ex 12-15
 1300-1500 on 15344.8 BUE 100 kW / 335 deg to NoAm Spanish Mon-Fri, ex 12-15
 1500-1530 on 6060 # BUE 100 kW / non-dir to SoAm Spanish Mon-Fri, new txion
 1500-1530 on 15344.8 BUE 100 kW / 335 deg to NoAm Spanish Mon-Fri, new txion
 1700-1800 on 9690 # BUE 100 kW / 035 deg to WeEu German Mon-Fri*
 1700-1800 on 15344.8 BUE 100 kW / 035 deg to WeEu German Mon-Fri*
 1800-1900 on 9690 # BUE 100 kW / 035 deg to WeEu English Mon-Fri*
 1800-1900 on 15344.8 BUE 100 kW / 035 deg to WeEu English Mon-Fri*
 1900-2000 on 9690 # BUE 100 kW / 035 deg to WeEu Italian Mon-Fri*
 1900-2000 on 15344.8 BUE 100 kW / 035 deg to WeEu Italian Mon-Fri*
 2000-2100 on 9690 # BUE 100 kW / 035 deg to WeEu French Mon-Fri*
 2000-2100 on 15344.8 BUE 100 kW / 035 deg to WeEu French Mon-Fri*
 2100-2200 on 9690 # BUE 100 kW / 035 deg to WeEu German Mon-Fri
 2100-2200 on 15344.8 BUE 100 kW / 035 deg to WeEu German Mon-Fri
 2200-2400 on 9690 # BUE 100 kW / 035 deg to WeEu Spanish Mon-Fri
 2200-2400 on 15344.8 BUE 100 kW / 035 deg to WeEu Spanish Mon-Fri
 0000-0100 on 11710.8 BUE 100 kW / 335 deg to NoAm Portuguese Tue-Sat*
 0100-0200 on 11710.8 BUE 100 kW / 335 deg to NoAm Japanese Tue-Sat*
 0200-0300 on 11710.8 BUE 100 kW / 335 deg to NoAm English Tue-Sat
 0300-0400 on 11710.8 BUE 100 kW / 335 deg to NoAm French Tue-Sat
 0400-0500 on 11710.8 BUE 100 kW / 335 deg to EaAs Chinese Tue-Sat, new sce
 # not active at present
 * news in Spanish in the last 3 minutes at xx57-xx00

A-13 of RLA-1 Radio Nacional Argentina (RNA):

2000-2400 on 6060 # BUE 100 kW / non-dir to SoAm Spanish Sat
 2000-2400 on 15344.8 BUE 100 kW / 035 deg to WeEu Spanish Sat
 0000-0230 on 6060 # BUE 100 kW / non-dir to SoAm Spanish Sun
 0000-0230 on 15344.8 BUE 100 kW / 035 deg to WeEu Spanish Sun
 1800-2400 on 6060 # BUE 100 kW / non-dir to SoAm Spanish Sun
 1800-2400 on 15344.8 BUE 100 kW / 335 deg to NoAm Spanish Sun
 0000-0300 on 6060 # BUE 100 kW / non-dir to SoAm Spanish Mon
 0000-0300 on 15344.8 BUE 100 kW / 335 deg to NoAm Spanish Mon
 # not active at present
 (DX MIX NEWS #781 from Georgi Bancov and Ivo Ivanov, May 15, 2013)

ARMENIA / ASCENSION ISL / AUSTRIA / MOLDOVA / PALAU / RWANDA / SINGAPORE / SOUTH AFRICA / TAIWAN / UAE / U.K. / U.S.A. / UZBEKISTAN -

Summer A-13 of BABCOCK Relays:

Radio Australia

0000-0030 12005 SNG 100 kW 340 deg to SEAs Burmese
 0100-0130 11780 SNG 100 kW 340 deg to SEAs Burmese
 0400-0500 17800 HBN 100 kW 270 deg to SEAs Indonesian
 1100-1300 6140 SNG 100 kW 013 deg to SEAs English
 1300-1430 9965 HBN 100 kW 318 deg to EAs Chinese
 1600-1630 9540 SNG 100 kW 340 deg to SEAs English
 2200-2330 9695 UAE 250 kW 105 deg to SEAs Indonesian
 2200-2400 9855 UAE 250 kW 090 deg to SEAs English
 2300-2330 5955 UAE 250 kW 085 deg to SEAs Burmese

FEBA Radio

0000-0030 9390 UZB 100 kW 131 deg to SAs Bangla
 0200-0230 9750 UAE 250 kW 060 deg to SAs Urdu Su
 0200-0215 9750 UAE 250 kW 060 deg to SAs Urdu Mo-Sa
 0215-0230 9750 UAE 250 kW 060 deg to SAs Mixed langs Mo-Sa
 0230-0300 9790 UAE 250 kW 045 deg to WAs Dari (Radio Sadaye Zindagi)
 0300-0315 9790 UAE 250 kW 045 deg to WAs Mixed lang

0800-0830 15280 OE 300 kW 115 deg to NE/ME Arabic
 1200-1230 15215 UAE 250 kW 085 deg to CAS Tibetan
 1400-1430 11880 UAE 250 kW 060 deg to SAs Urdu
 1430-1445 11880 UAE 250 kW 060 deg to SAs Mixed langs
 1430-1500 9500 UZB 100 kW 131 deg to SAs Hindi
 1500-1530 9390 UZB 100 kW 131 deg to SAs Bangla
 1500-1530 11755 ERV 300 kW 100 deg to WAs Dari (Radio Sadaye Zindagi)
 1530-1600 11755 ERV 300 kW 100 deg to WAs Pashto
 1600-1630 11655 RRW 250 kW 030 deg to EAf Afar
 1600-1630 12125 ERV 300 kW 192 deg to EAf Amharic Thu-Su
 1600-1630 12125 ERV 300 kW 192 deg to EAf Guragena Mo-Wed
 1630-1700 12125 ERV 300 kW 192 deg to EAf Amharic
 1630-1700 9820 UAE 250 kW 230 deg to EAf Tigrinya Su-Wed
 1630-1700 9820 UAE 250 kW 230 deg to EAf Amharic Thu-Sa
 1700-1730 6180 UAE 250 kW 215 deg to EAf Somali
 1700-1730 9630 RRW 250 kW 030 deg to EAf Orominya
 1730-1800 7475 ERV 300 kW 192 deg to EAf Silte
 1730-1800 9630 RRW 250 kW 030 deg to EAf Tigrinya
 1800-1930 9550 RRW 250 kW 030 deg to NE/ME Arabic
 1830-1845 15250 ASC 250 kW 070 deg to CWAf French
 2145-2215 11985 ASC 250 kW 027 deg to WAF Hassinya Thu-Tue

Voice of Vietnam

0100-0128 12005 Wof 250 kW 282 deg to NAm English
 0130-0228 12005 Wof 250 kW 282 deg to NAm Vietnamese
 0230-0258 12005 Wof 250 kW 282 deg to NAm English
 0300-0328 6175 HRI 250 kW 173 deg to CAm Spanish
 0330-0358 6175 HRI 250 kW 173 deg to CAm English
 0400-0428 6175 HRI 250 kW 173 deg to CAm Spanish
 0430-0528 6175 HRI 100 kW 315 deg to NWAm Vietnamese
 1700-1728 9625 OE 100 kW 300 deg to WEu English
 1730-1828 9625 OE 100 kW 300 deg to WEu Vietnamese
 1830-1858 9625 OE 100 kW 300 deg to WEu French
 1900-1928 9890 Wof 250 kW 075 deg to EEU Russian
 1930-2028 9430 Wof 250 kW 182 deg to WEu German
 2030-2128 11840 Wof 250 kW 114 deg to SEEU Vietnamese

Radio Japan NHK World

0100-0130 11590 UZB 100 kW 163 deg to SAs Hindi
 0400-0430 11730 UZB 100 kW 236 deg to WAs Farsi
 0400-0430 12015 ASC 250 kW 245 deg to SAm Spanish
 0500-0530 5975 Wof 250 kW 140 deg to WEu English
 0800-1000 11740 SNG 250 kW 000 deg to SEAs Japanese
 0800-1000 12015 ASC 250 kW 245 deg to SAm Japanese
 0945-1030 6140 SNG 250 kW 140 deg to SEAs Indonesian
 1000-1030 9695 SNG 250 kW 000 deg to SEAs English
 1030-1100 11740 SNG 250 kW 330 deg to SEAs Burmese
 1100-1130 11740 SNG 250 kW 000 deg to SEAs Vietnamese
 1100-1200 9760 Wof 060 kW 105 deg WEu English/Russian Fr DRM
 1130-1200 11740 SNG 250 kW 000 deg to SEAs Thai
 1200-1230 11740 SNG 250 kW 000 deg to SEAs English
 1230-1300 11740 SNG 250 kW 000 deg to SEAs Thai
 1300-1330 11740 SNG 100 kW 000 deg to SEAs Vietnamese
 1300-1345 11685 SNG 250 kW 315 deg to SAs Bengali
 1315-1400 11705 HBN 100 kW 270 deg to SEAs Indonesian
 1400-1430 11705 HBN 100 kW 270 deg to SEAs English
 1400-1430 15735 UZB 100 kW 163 deg to SAs English
 1430-1500 11740 SNG 250 kW 330 deg to SEAs Burmese
 1500-1700 12045 SNG 250 kW 315 deg to WAs Japanese
 1515-1600 13870 UAE 250 kW 060 deg to SAs Urdu
 1800-1830 11885 RSA 250 kW 328 deg to CAF English

Adventist World Radio

0100-0200 15445 TAI 100 kW 250 deg to Asia Vietnamese Sa, Taipei site

6

Radio Payem e-Doost in Farsi

0230-0315 7460 KCH 500 kW 116 deg to WAs Farsi
0230-0315 11710 UZB 100 kW 236 deg to WAs Farsi from June 1
1800-1845 5900 UAE 250 kW 035 deg to WAs Farsi from June 1
1800-1845 7480 KCH 500 kW 116 deg to WAs Farsi

Radio Okapi, currently inactive, maybe will be resumed from June 1:

0400-0500 11690 RSA 250 kW 340 deg to CAf French/Lingala

EDC Sudan Radio Service Darfur Program:

0400-0530 13720 UAE 250 kW 255 deg to NEAf Arabic
1600-1730 17745 Wof 300 kW 135 deg to NEAf Arabic

Radio Damal, currently inactive, maybe resumed from June 1:

0400-0700 15700 UAE 250 kW 205 deg to EAf Somali
1830-1930 11980 Wof 300 kW 122 deg to EAf Somali
1930-2130 11980 UAE 250 kW 205 deg to EAf Somali

KBS World Radio

0700-0800 9860 Wof 250 kW 102 deg to WEu Korean
1100-1130 9760 Wof 060 kW 105 deg to WEu English Sa DRM
1800-1900 15360 Wof 300 kW 074 deg to EEU Russian
1900-2000 6145 Wof 390 kW 172 deg to WEu French
2000-2100 13585 UAE 250 kW 290 deg to NEAf Arabic
2000-2100 3955 Wof 250 kW 114 deg to WEu German
2100-2130 3955 Wof 250 kW 114 deg to WEu English

Radio ERGO

0830-0930 13685 UAE 250 kW 225 deg to EAf Somali

Radio Free Sarawak:

1100-1300 15460 TAI 100 kW 200 deg SEAs Iban, cancelled from May 12
Paochung site.

Eternal Good News

1130-1145 15525 UAE 250 kW 100 deg to SAs English Fr

Trans World Radio Africa

1300-1315 13660 RRW 250 kW 030 deg to EAf Afar Thu-Su
1630-1700 11635 UAE 250 kW 225 deg to EAf Somali
1800-1815 6120 UAE 250 kW 225 deg to EAf Tigrinya Mo-Wed
1800-1815 6120 UAE 250 kW 225 deg to EAf Amharic Thu/Fr
1800-1830 6120 UAE 250 kW 225 deg to EAf Tigre Sa
1800-1830 6120 UAE 250 kW 225 deg to EAf Kunama Su
1815-1845 6120 UAE 250 kW 225 deg to EAf Tigrinya Mo-Fr
1830-1845 6120 UAE 250 kW 225 deg to EAf Amharic Su

Nippon no Kaze:

1300-1330 9950 TAI 100 kW 002 deg to NEAs Japanese. Taipei site.
1500-1530 9975 HBN 100 kW 345 deg to NEAs Korean
1530-1600 9965 HBN 100 kW 345 deg to NEAs Korean

Furusato no Kaze:

1330-1400 9950 TAI 100 kW 002 deg to NEAs Japanese. Taipei site.
1430-1500 9950 HBN 100 kW 345 deg to NEAs Japanese
1600-1630 9780 TAI 250 kW 045 deg to NEAs Japanese. Taipei site.

Bible Voice Broadcasting test May 6 / 7 / 8:

1530-1730 7485 KCH 300 kW 116 deg to WAs Farsi
1530-1730 15635 Wof 300 kW 086 deg to WAs Farsi

IBRA Radio

1700-1800 11915 Wof 300 kW 114 deg to NE/ME Arabic
1730-1800 11610 RSA 100 kW 035 deg to EAf Somali

1730-1800 11875 UAE 250 kW 220 deg to EAf Swahili
 1800-1945 12070 Wof 250 kW 140 deg to CAF Arabic
 1900-2000 11875 Wof 300 kW 182 deg to WAF Fulfulde

SW Radio Africa

1700-1900 4880 RSA 100 kW 005 deg to ZWE English/Ndebele/Shona

Radio Taiwan International

1900-2000 6185 Wof 250 kW 140 deg to WEu German
 1900-2000 7325 Wof 300 kW 140 deg to WEu French

RTE Radio One

1930-2000 5820 RSA 100 kW non-dir to SAf English

HCJB Global

2100-2145 7300 Wof 250 kW 170 deg to NAF Arabic
 (DX MIX News, Ivo Ivanov-BUL, via wwdxc BC-DX TopNews May 28)

AUSTRALIA - A-13 SW schedule of Radio Australia:

0000-0030 9660 BRN 010 kW 010 deg to NPac English
 0000-0030 12005 SNG 100 kW 340 deg to SEAs Burmese
 0000-0030 12080 BRN 010 kW 080 deg to EPac English
 0000-0030 15240 SHP 100 kW 030 deg to NPac English
 0000-0030 15415 SHP 100 kW 355 deg to EAs English
 0000-0030 17750 SHP 100 kW 329 deg to SEAs Indonesian
 0000-0030 19000 SHP 100 kW 065 deg to EPac English
 0000-0030 17795 SHP 100 kW 050 deg to EPac English
 0000-0030 21740 SHP 100 kW 070 deg to EPac English
 0030-0100 9660 BRN 010 kW 010 deg to NPac English
 0030-0100 12080 BRN 010 kW 080 deg to EPac English
 0030-0100 15240 SHP 100 kW 030 deg to NPac English
 0030-0100 15415 SHP 100 kW 355 deg to EAs English
 0030-0100 17750 SHP 100 kW 329 deg to SEAs English
 0030-0100 19000 SHP 100 kW 065 deg to EPac English
 0030-0100 17795 SHP 100 kW 050 deg to EPac English
 0030-0100 21740 SHP 100 kW 070 deg to EPac English
 0100-0130 11780 SNG 100 kW 340 deg to SEAs Burmese
 0100-0200 9660 BRN 010 kW 010 deg to NPac English
 0100-0200 12080 BRN 010 kW 080 deg to EPac English
 0100-0200 15240 SHP 100 kW 030 deg to NPac English
 0100-0200 15415 SHP 100 kW 355 deg to EAs English
 0100-0200 15160 SHP 100 kW 065 deg to EPac English
 0100-0200 17750 SHP 100 kW 329 deg to SEAs English
 0100-0200 17795 SHP 100 kW 050 deg to EPac English
 0100-0200 19000 SHP 100 kW 070 deg to EPac English
 0200-0300 9660 BRN 010 kW 010 deg to NPac English
 0200-0300 12080 BRN 010 kW 080 deg to EPac English
 0200-0300 15240 SHP 100 kW 030 deg to NPac English
 0200-0300 15415 SHP 100 kW 355 deg to EAs English
 0200-0300 15160 SHP 100 kW 065 deg to EPac English
 0200-0300 17750 SHP 100 kW 329 deg to SEAs English
 0200-0300 17795 SHP 100 kW 050 deg to EPac English
 0200-0300 19000 SHP 100 kW 070 deg to EPac English
 0300-0315 9660 BRN 010 kW 010 deg to NPac English
 0300-0315 12080 BRN 010 kW 080 deg to EPac English
 0300-0315 15240 SHP 100 kW 030 deg to NPac French Mo-Fr
 0300-0315 15240 SHP 100 kW 030 deg to NPac English Sa/Su
 0300-0315 15160 SHP 100 kW 065 deg to EPac English
 0300-0315 15415 SHP 100 kW 355 deg to EAs English
 0300-0315 15515 SHP 100 kW 070 deg to EPac French Mo-Fr
 0300-0315 15515 SHP 100 kW 070 deg to EPac English Sa/Su
 0300-0315 17750 SHP 100 kW 329 deg to SEAs English
 0300-0315 21725 SHP 100 kW 355 deg to EAs English
 0315-0400 9660 BRN 010 kW 010 deg to NPac English

0315-0400	12080	BRN	010	kW	080	deg	to	EPac	English
0315-0400	15240	SHP	100	kW	030	deg	to	NPac	English
0315-0400	15160	SHP	100	kW	065	deg	to	EPac	English
0315-0400	15415	SHP	100	kW	355	deg	to	EAs	English
0315-0400	15515	SHP	100	kW	070	deg	to	EPac	English
0315-0400	17750	SHP	100	kW	329	deg	to	SEAs	English
0315-0400	21725	SHP	100	kW	355	deg	to	EAs	English
0400-0500	9660	BRN	010	kW	010	deg	to	NPac	English
0400-0500	12080	BRN	010	kW	080	deg	to	EPac	English
0400-0500	15240	SHP	100	kW	030	deg	to	NPac	English
0400-0500	15415	SHP	100	kW	355	deg	to	EAs	English
0400-0500	15515	SHP	100	kW	070	deg	to	EPac	English
0400-0500	15160	SHP	100	kW	065	deg	to	EPac	English
0400-0500	17750	SHP	100	kW	329	deg	to	SEAs	Indonesian
0400-0500	17800	HBN	100	kW	270	deg	to	SEAs	Indonesian
0400-0500	21725	SHP	100	kW	355	deg	to	EAs	English
0500-0530	9660	BRN	010	kW	010	deg	to	NPac	English
0500-0530	12080	BRN	010	kW	080	deg	to	EPac	English
0500-0530	13630	SHP	100	kW	050	deg	to	EPac	English
0500-0530	15240	SHP	100	kW	030	deg	to	NPac	English
0500-0530	15415	SHP	100	kW	355	deg	to	EAs	English
0500-0530	15515	SHP	100	kW	070	deg	to	EPac	English
0500-0530	17750	SHP	100	kW	329	deg	to	SEAs	Indonesian
0500-0530	21725	SHP	100	kW	329	deg	to	SEAs	English
0530-0600	9660	BRN	010	kW	010	deg	to	NPac	English
0530-0600	12080	BRN	010	kW	080	deg	to	EPac	English
0530-0600	13630	SHP	100	kW	050	deg	to	EPac	English
0530-0600	15240	SHP	100	kW	030	deg	to	NPac	English
0530-0600	15415	SHP	100	kW	355	deg	to	EAs	English
0530-0600	15515	SHP	100	kW	070	deg	to	EPac	English
0530-0600	17750	SHP	100	kW	329	deg	to	SEAs	English
0530-0600	21725	SHP	100	kW	329	deg	to	SEAs	English
0600-0700	9660	BRN	010	kW	010	deg	to	NPac	English
0600-0700	11945	SHP	100	kW	100	deg	to	SPac	English
0600-0700	12080	BRN	010	kW	080	deg	to	EPac	English
0600-0700	13630	SHP	100	kW	050	deg	to	EPac	English
0600-0700	15240	SHP	100	kW	030	deg	to	NPac	English
0600-0700	15415	SHP	100	kW	355	deg	to	EAs	English
0600-0700	17750	SHP	100	kW	329	deg	to	SEAs	English
0600-0700	21725	SHP	100	kW	329	deg	to	SEAs	English
0700-0800	7410	SHP	100	kW	030	deg	to	NPac	English
0700-0800	9475	SHP	100	kW	353	deg	to	EAs	English
0700-0800	9660	BRN	010	kW	010	deg	to	NPac	English
0700-0800	9710	SHP	100	kW	353	deg	to	EAs	English
0700-0800	11945	SHP	100	kW	100	deg	to	SPac	English
0700-0800	12080	BRN	010	kW	080	deg	to	EPac	English
0700-0800	13630	SHP	100	kW	050	deg	to	EPac	English
0700-0800	15240	SHP	100	kW	030	deg	to	NPac	English
0800-0900	5995	BRN	010	kW	010	deg	to	NPac	English
0800-0900	7410	SHP	100	kW	030	deg	to	NPac	English
0800-0900	9475	SHP	100	kW	353	deg	to	EAs	English
0800-0900	9580	SHP	100	kW	080	deg	to	EPac	English
0800-0900	9710	SHP	100	kW	353	deg	to	EAs	English
0800-0900	11945	SHP	100	kW	100	deg	to	SPac	English
0800-0900	12080	BRN	010	kW	080	deg	to	EPac	English
0800-0900	15240	SHP	100	kW	030	deg	to	NPac	English
0900-1000	5995	BRN	010	kW	010	deg	to	NPac	Pidgin
0900-1000	6080	SHP	100	kW	005	deg	to	NPac	Pidgin
0900-1000	NF6150	SHP	100	kW	030	deg	to	NPac	Pidgin, ex6020
0900-1000	9475	SHP	100	kW	030	deg	to	NPac	Pidgin
0900-1000	9580	SHP	100	kW	080	deg	to	EPac	English
0900-1000	9710	SHP	100	kW	353	deg	to	EAs	Pidgin
0900-1000	11945	SHP	100	kW	100	deg	to	SPac	English
0900-1000	12080	BRN	010	kW	080	deg	to	EPac	Pidgin

1000-1100	5995	BRN	010	kW	010	deg	to	NPac	Pidgin	Mo-Fr
1000-1100	5995	BRN	010	kW	010	deg	to	NPac	English	Sa/Su
1000-1100	6080	SHP	100	kW	005	deg	to	NPac	Pidgin	Mo-Fr
1000-1100	6080	SHP	100	kW	005	deg	to	NPac	English	Sa/Su
1000-1100	NF6150	SHP	100	kW	030	deg	to	NPac	Pidgin	Mo-Fr, ex6020
1000-1100	NF6150	SHP	100	kW	030	deg	to	NPac	English	Sa/Su, ex6020
1000-1100	9475	SHP	100	kW	030	deg	to	NPac	Pidgin	Mo-Fr
1000-1100	9475	SHP	100	kW	030	deg	to	NPac	English	Sa/Su
1000-1100	9580	SHP	100	kW	070	deg	to	EPac	English	
1000-1100	9710	SHP	100	kW	353	deg	to	EAs	Pidgin	Mo-Fr
1000-1100	9710	SHP	100	kW	353	deg	to	EAs	English	Sa/Su
1000-1100	12065	SHP	100	kW	070	deg	to	EPac	English,	ex11945
1000-1100	12080	BRN	010	kW	080	deg	to	EPac	Pidgin	Mo-Fr
1000-1100	12080	BRN	010	kW	080	deg	to	EPac	English	Sa/Su
1100-1200	5995	BRN	010	kW	010	deg	to	NPac	English	
1100-1200	6080	SHP	100	kW	005	deg	to	NPac	English	
1100-1200	6140	SNG	100	kW	013	deg	to	SEAs	English	
1100-1200	NF6150	SHP	100	kW	030	deg	to	NPac	English,	ex6020
1100-1200	9475	SHP	100	kW	329	deg	to	SEAs	English	
1100-1200	9580	SHP	100	kW	070	deg	to	EPac	English	
1100-1200	11945	SHP	100	kW	329	deg	to	SEAs	English	
1100-1200	NF12065	SHP	100	kW	070	deg	to	EPac	English,	ex11945
1100-1200	12080	BRN	010	kW	080	deg	to	EPac	English	DRM
1200-1300	5995	BRN	010	kW	010	deg	to	NPac	English	DRM
1200-1300	6080	SHP	100	kW	005	deg	to	NPac	English	
1200-1300	6140	SNG	100	kW	013	deg	to	SEAs	English	
1200-1300	NF6150	SHP	100	kW	030	deg	to	NPac	English,	ex6020
1200-1300	9475	SHP	100	kW	329	deg	to	SEAs	English	
1200-1300	9580	SHP	100	kW	070	deg	to	EPac	English	
1200-1300	NF12065	SHP	100	kW	070	deg	to	EPac	English,	ex11945
1300-1400	5940	SHP	100	kW	334	deg	to	SEAs	English	
1300-1400	5995	BRN	010	kW	010	deg	to	NPac	English	DRM
1300-1400	NF6150	SHP	100	kW	030	deg	to	NPac	English,	ex6020
1300-1400	9475	SHP	100	kW	329	deg	to	SEAs	Chinese	
1300-1400	9580	SHP	100	kW	070	deg	to	EPac	English	
1300-1400	9965	HBN	100	kW	318	deg	to	EAs	Chinese	
1300-1400	NF11665	SHP	100	kW	329	deg	to	SEAs	Chinese,	ex11660
1300-1400	NF12065	SHP	100	kW	070	deg	to	EPac	English,	ex11945
1400-1430	5940	SHP	100	kW	334	deg	to	SEAs	English	
1400-1430	5995	SHP	100	kW	030	deg	to	NPac	English	
1400-1430	9475	SHP	100	kW	329	deg	to	SEAs	Chinese	
1400-1430	9580	SHP	100	kW	070	deg	to	EPac	English	
1400-1430	9965	HBN	100	kW	318	deg	to	EAs	Chinese	
1400-1430	NF11665	SHP	100	kW	329	deg	to	SEAs	Chinese,	ex11660
1400-1430	NF12065	SHP	100	kW	070	deg	to	EPac	English,	ex11945
1430-1500	5940	SHP	100	kW	334	deg	to	SEAs	English	
1430-1500	5995	SHP	100	kW	030	deg	to	NPac	English	
1430-1500	9475	SHP	100	kW	329	deg	to	SEAs	English	
1430-1500	9580	SHP	100	kW	070	deg	to	EPac	English	
1430-1500	NF11665	SHP	100	kW	329	deg	to	SEAs	English,	ex11660
1430-1500	NF12065	SHP	100	kW	070	deg	to	EPac	English,	ex11945
1500-1530	5940	SHP	100	kW	334	deg	to	SEAs	English	
1500-1530	5995	SHP	100	kW	030	deg	to	NPac	English	
1500-1530	7240	SHP	100	kW	040	deg	to	NPac	English	
1500-1530	9475	SHP	100	kW	329	deg	to	SEAs	English	
1500-1530	NF11665	SHP	100	kW	329	deg	to	SEAs	English,	ex11660
1500-1530	NF12065	SHP	100	kW	070	deg	to	EPac	English,	ex11945
1530-1600	5940	SHP	100	kW	334	deg	to	SEAs	English	
1530-1600	5995	SHP	100	kW	030	deg	to	NPac	English	
1530-1600	7240	SHP	100	kW	040	deg	to	NPac	English	
1530-1600	9475	SHP	100	kW	329	deg	to	SEAs	English	
1530-1600	11660	SHP	100	kW	329	deg	to	SEAs	English	
1530-1600	11880	SHP	100	kW	050	deg	to	NPac	English	
1600-1630	9540	SNG	100	kW	340	deg	to	SEAs	English	

1600-1700	5940	SHP	100	kW	334	deg	to	SEAs	English
1600-1700	5995	SHP	100	kW	030	deg	to	NPac	English
1600-1700	7240	SHP	100	kW	040	deg	to	NPac	English
1600-1700	9475	SHP	100	kW	329	deg	to	SEAs	English
1600-1700	11660	SHP	100	kW	329	deg	to	SEAs	English
1600-1700	11880	SHP	100	kW	050	deg	to	NPac	English
1700-1730	5995	SHP	100	kW	030	deg	to	NPac	English
1700-1730	9475	SHP	100	kW	329	deg	to	SEAs	English
1700-1730	9500	SHP	100	kW	353	deg	to	EAs	English
1700-1730	9580	SHP	100	kW	070	deg	to	EPac	English
1700-1730	11660	SHP	100	kW	329	deg	to	SEAs	English
1700-1730	11880	SHP	100	kW	050	deg	to	NPac	English
1730-1800	5995	SHP	100	kW	030	deg	to	NPac	English
1730-1800	6080	SHP	100	kW	005	deg	to	NPac	English
1730-1800	9475	SHP	100	kW	329	deg	to	SEAs	English
1730-1800	9500	SHP	100	kW	353	deg	to	EAs	English
1730-1800	9580	SHP	100	kW	070	deg	to	EPac	English
1730-1800	11880	SHP	100	kW	050	deg	to	NPac	English
1800-1900	6080	SHP	100	kW	005	deg	to	NPac	English
1800-1900	9475	SHP	100	kW	329	deg	to	SEAs	English
1800-1900	9500	SHP	100	kW	353	deg	to	EAs	English
1800-1900	9580	SHP	100	kW	070	deg	to	EPac	English
1800-1900	9710	SHP	100	kW	030	deg	to	NPac	English
1800-1900	11880	SHP	100	kW	050	deg	to	NPac	English
1900-2000	6080	SHP	100	kW	005	deg	to	NPac	English
1900-2000	9500	SHP	100	kW	353	deg	to	EAs	English
1900-2000	9580	SHP	100	kW	070	deg	to	EPac	English
1900-2000	9710	SHP	100	kW	030	deg	to	NPac	English
1900-2000	11660	SHP	100	kW	065	deg	to	EPac	English
1900-2000	11880	SHP	100	kW	050	deg	to	NPac	English
2000-2030	6080	SHP	100	kW	005	deg	to	NPac	English
2000-2030	9500	SHP	100	kW	353	deg	to	EAs	English
2000-2030	9580	SHP	100	kW	070	deg	to	EPac	English
2000-2030	11650	SHP	100	kW	030	deg	to	NPac	English
2000-2030	11660	SHP	100	kW	065	deg	to	EPac	English
2000-2030	12080	BRN	010	kW	080	deg	to	EPac	English
2000-2030	15515	SHP	100	kW	050	deg	to	NPac	English
2030-2100	9500	SHP	100	kW	355	deg	to	EAs	English
2030-2100	9580	SHP	100	kW	070	deg	to	EPac	English
2030-2100	11650	SHP	100	kW	030	deg	to	NPac	English
2030-2100	11660	SHP	100	kW	065	deg	to	EPac	English
2030-2100	11695	SHP	100	kW	329	deg	to	SEAs	English
2030-2100	12080	BRN	010	kW	080	deg	to	EPac	English
2030-2100	15515	SHP	100	kW	050	deg	to	NPac	English
2100-2200	9500	SHP	100	kW	355	deg	to	EAs	English
2100-2200	9660	BRN	010	kW	010	deg	to	NPac	English
2100-2200	11650	SHP	100	kW	030	deg	to	NPac	English
2100-2200	11695	SHP	100	kW	329	deg	to	SEAs	English
2100-2200	12080	BRN	010	kW	080	deg	to	EPac	English
2100-2200	13630	SHP	100	kW	065	deg	to	EPac	English
2100-2200	15515	SHP	100	kW	050	deg	to	NPac	English
2100-2200	21740	SHP	100	kW	070	deg	to	EPac	English
2200-2300	9660	BRN	010	kW	010	deg	to	NPac	English
2200-2300	9695	UAE	250	kW	105	deg	to	SEAs	Indonesian
2200-2300	9855	UAE	250	kW	090	deg	to	SEAs	English
2200-2300	11695	SHP	100	kW	329	deg	to	SEAs	Indonesian
2200-2300	12080	BRN	010	kW	080	deg	to	EPac	English
2200-2300	13630	SHP	100	kW	065	deg	to	EPac	English
2200-2300	NF15240	SHP	100	kW	030	deg	to	NPac	English, ex15230
2200-2300	15415	SHP	100	kW	355	deg	to	EAs	English
2200-2300	15515	SHP	100	kW	050	deg	to	NPac	English
2200-2300	21740	SHP	100	kW	070	deg	to	EPac	English
2300-2330	5955	UAE	250	kW	085	deg	to	SEAs	Burmese
2300-2330	9660	BRN	010	kW	010	deg	to	NPac	English

2300-2330 9695 UAE 250 kW 105 deg to SEAs Indonesian
 2300-2330 9855 UAE 250 kW 090 deg to SEAs English
 2300-2330 11695 SHP 100 kW 329 deg to SEAs Indonesian
 2300-2330 12080 BRN 010 kW 080 deg to EPac English
 2300-2330 NF15240 SHP 100 kW 030 deg to NPac English, ex15230
 2300-2330 15415 SHP 100 kW 355 deg to EAs English
 2300-2330 17795 SHP 100 kW 050 deg to NPac English
 2300-2330 19000 SHP 100 kW 065 deg to EPac English
 2300-2330 21740 SHP 100 kW 070 deg to EPac English
 2330-2400 9660 BRN 010 kW 010 deg to NPac English
 2330-2400 9855 UAE 250 kW 090 deg to SEAs English
 2330-2400 12080 BRN 010 kW 080 deg to EPac English
 2330-2400 NF15240 SHP 100 kW 030 deg to NPac English, ex15230
 2330-2400 15415 SHP 100 kW 355 deg to EAs English
 2330-2400 17750 SHP 100 kW 329 deg to SEAs English
 2330-2400 17795 SHP 100 kW 050 deg to NPac English
 2330-2400 19000 SHP 100 kW 065 deg to EPac English
 2330-2400 21740 SHP 100 kW 070 deg to EPac English
 (DX MIX News, Ivo Ivanov-BUL, via wwdxc BC-DX TopNews May 21)

BRAZIL - 3355, R. Educadora 6 de Agosto, Xapuri AC, 2305-2316, 23/5, texto; 25331.

4754.9, R. Imaculada Conceição, Cp.º Grande MS, 2135-2141, 24/5, progr. de prop. relig.; 25331.

4785, R. Caiari, Pt.º Velho RO, 2155-2209, 24/5, recitação do terço, texto, pelas 2200, música, e não a retransmissão de A Voz do Brasil, 2200-2300; 25331.

4845.2, R. Cultura Ondas Tropicais, Manaus AM, 2201-2212, 25/5, relato de jogo de futebol; 34432, áudio com qualidade de "linha telefónica", baixo, QRM adj. de CODAR.

4876.85, R. Roraima, Boa Vista RR, 2139-2147, 24/5, canções; 24331; QRM de CODAR. Em 25/5, pelas 2200, on sinal foi melhor, 44433, e houve um desvio na freq., para 4876.95.

4915 R. Dif.ª, Macapá AP, 2144-2155, 24/5, canções, retransmissão de A Voz do Brasil, às 2200; 43432, QRM da R. Daqui, B.

4915, R. Daqui, Goiânia GO, 2145-2154, 24/5, texto, retransmissão de A Voz do Brasil, às 2200; 43421, QRM da R. Dif.ª, B.

[Is there an echo since both are carrying the same program, or exactly synchronized? gh]

4925.2, R. Educação Rural, Tefé AM, 2147-2158, 24/5, noticiário regional, ainda no ar pelas 2200, e não houve retransmissão de Voz do Brasil, às 2200; 25321.

5025, R. Aparecida, Aparecida SP, 2134-2148, 23/5, canções infos. horárias; 35332. Melhor desempenho em 25/5, pelas 2210, durante o programa DX.

6104.7, R. Filadélfia, Foz do Iguaçu PR, 2112-2122, 24/5, A Voz do Brasil, 1.ª parte; 44433, QRM adjacente.

6120, SRDA, São Paulo SP, 2138-2153, 23/5, canções e propag. relig., texto tanto em português como em castelhano; 34432, QRM adjacente. Em 24/5, 2113-2124, durante a retransm. de A Voz do Brasil, SINPO de 44433, QRM adjacente.

9664.75, R. Voz Missionária, Camboriú SC, 2135-2151, 23/5, rubrica Musical Voz Missionária; 45444.

9819.2, R. 9 de Julho, São Paulo SP, 2115-2145, 24/5, entrevista, anúncios informativos, Oração Final, às 2128, noticiário, às 2130; 43442, QRM adj. da China, em 9820.

11735, R. Transmundial, St.ª M.ª RS, 1008-quase desvanecimento total 1220, 26/5, canções folclóricas, progr. de propag. relig., às 1115, música; 24432, QRM adjacente.

11764.8, SRDA, Curitiba PR, 2217-2226, 25/5, David Miranda escutando testemunhos de curas...; 45433.

11764.86, idem, 1009-quase desvan. total 1155, 26/5, entrevistas com "curados",..., D-. Miranda em port. e cast., às 1120; 35433.

11815, R. Brasil Central, Goiânia GO, 2207-2223, 24/5, A Voz do Brasil, 1.ª parte; 44433, QRM adj. da Arábia Saudita, em 11820.

11815.07 idem, 1013-1158, 26/5, canções folclóricas, infos. horárias; 35443, em perda, QRM da REE via CTR, às 1200 [WOR 1671]

11854.9, R. Aparecida, Aparecida SP, 2133-2149, 23/5, canções, infos. Horárias (v. // 5035); 35433. Ignoro ou não me recordo do nome do programa que costuma passar neste horário.

15191.3, R. Inconfidência, Belo Horizonte MG, 2112-2136, 23/5, programa A Hora do Fazendeiro, com canções, infos. horárias, cotações de bens agrícolas, informações; 35544.

15191.3, idem, 1122-, 26/5, texto, recordações musicais, anúncios de programação, tTH na rubrica Anos Dourados, e, mais tarde, pelas 1215, Homenagem,...., pelas 1400, a rubrica Ronildo (?) & C.ª; 25543. (Carlos Gonçalves, PORTUGAL, dxldyg via DXLD)

FINLAND - Summer A-13 SW schedule of Scandinavian Weekend Radio(SWR) on June 21-22 (Midsummer Radio) and July 5-6 (13th Birthday broadcast). Monthly broadcast 1st Saturday 0000-2400 Finnish time or 2100-2100UTC. For the last transmission from May 31 to June 1 they did not use 25 meterband frequencies 11690/11720, only the 49 meterband frequencies 5980/6170.

2100-2200 on 6170 VIR 0.1 kW / non-dir to FIN Finnish
 2100-2200 on 11720 VIR 0.1 kW / non-dir to FIN Finnish
 2200-0500 on 6170 VIR 0.1 kW / non-dir to FIN Finnish
 2200-0500 on 11690 VIR 0.1 kW / non-dir to FIN Finnish
 0500-0700 on 5980 VIR 0.1 kW / non-dir to FIN Finnish
 0500-0700 on 11690 VIR 0.1 kW / non-dir to FIN Finnish
 0700-0800 on 5980 VIR 0.1 kW / non-dir to FIN Finnish
 0700-0800 on 11720 VIR 0.1 kW / non-dir to FIN Finnish
 0800-1300 on 6170 VIR 0.1 kW / non-dir to FIN Finnish
 0800-1300 on 11720 VIR 0.1 kW / non-dir to FIN Finnish
 1300-1400 on 6170 VIR 0.1 kW / non-dir to FIN Finnish
 1300-1400 on 11690 VIR 0.1 kW / non-dir to FIN Finnish
 1400-1600 on 5980 VIR 0.1 kW / non-dir to FIN Finnish
 1400-1600 on 11690 VIR 0.1 kW / non-dir to FIN Finnish
 1600-1800 on 5980 VIR 0.1 kW / non-dir to FIN Finnish
 1600-1800 on 11720 VIR 0.1 kW / non-dir to FIN Finnish
 1800-2100 on 6170 VIR 0.1 kW / non-dir to FIN Finnish
 1800-2100 on 11690 VIR 0.1 kW / non-dir to FIN Finnish
 (DX MIX NEWS #784 from Georgi Bancov and Ivo Ivanov, June 04)

FRANCE / GERMANY / SAO TOME / SRI LANKA / U.K. - Changes of IBB:

Voice of America

1630-1700 NF11905 N 250 kW 150 deg to Sudan English Mo-Fr, ex9490
 1630-1700 NF15720 Wof 250 kW 094 deg to CSAf Portuguese Fr, ex15115
 1700-1800 NF15720 Wof 250 kW 094 deg to CSAf Portuguese, ex15115
 1800-1830 NF15720 CLN-IRA 250 kW 255 deg to CSAf Portuguese Mo-Fr, ex15115
 2000-2030 NF 6005 STP 100 kW 100 deg to CAF French, ex6065.

Radio Liberty

1500-1600 NF15630 F 250 kW 090 deg to CAs Tajik, ex15180 from May 20
 1500-1600 NF15180 Lam 100 kW 077 deg to CAs Turkmen, ex15525 from May 20
 (DX MIX News, Ivo Ivanov-BUL, via wwdxc BC-DX TopNews May 21)

FRANCE - Frequency changes of Radio France Internationale:

0600-0658 NF 13695 F 500 kW / 185 deg to NWAf French, ex 9790
 1430-1458 NF 15360 F 500 kW / 085 deg to WAs Pashto, ex 21580
 (DX MIX NEWS #781 from Georgi Bancov and Ivo Ivanov, May 15, 2013)

GERMANY [AUSTRIA / FRANCE / MADAGASCAR] - MEDIA BROADCAST GmbH A-13 period (31/03/2013 - 26/10/2013):

All transmissions from Wertachtal (W) were terminated, the site seems to be mothballed ("strategic reserve") (we) See also: <http://www.radioeins.de/programm/sendungen/medienmagazin/radio_news/beitraege/2013/wertachtal.html>

Mighty KBC Radio

0000-0200 on 9925 NAU 125 kW / 300 deg to NoAm English Sun till Aug.30
 0000-0200 on 7375 NAU 125 kW / 300 deg to NoAm English Sun from Sep.01
 0800-1500 on 6095 NAU 100 kW / 240 deg to WeEu English Sat/Sun

Radio Farda

0030-0400 on 7280 NAU 250 kW / 105 deg to WeAs Persian
 1600-1700 on 15470 NAU 250 kW / 105 deg to WeAs Persian

Gospel For Asia

0030-0130 on 9520 NAU 250 kW / 100 deg to SoAs Vary Asian langs
 1230-1500 on 15350 NAU 250 kW / 089 deg to SoAs Vary Asian langs
 1330-1530 on 15390 NAU 250 kW / 085 deg to SEAs Vary Asian langs
 1530-1630 on 15215 NAU 250 kW / 099 deg to SoAs Vary Asian langs
 2330-0030 on 9520 NAU 250 kW / 085 deg to SEAs Vary Asian langs

Bible Voice Broadcasting

0100-0115 on 9490 NAU 250 kW / 090 deg to SoAs English Sun
 0300-0315 on 7310 NAU 250 kW / 124 deg to N/ME Arabic Dardasha 7
 0330-0345 on 9440 NAU 125 kW / 105 deg to WeAs Persian Dardasha 7
 0400-0430 on 9410 NAU 100 kW / 110 deg to WeAs Luri Sat-Mon
 0430-0445 on 9460 NAU 125 kW / 120 deg to N/ME Arabic Dardasha 7
 0500-0530 on 9735 NAU 250 kW / 120 deg to N&ME Arabic Thu
 0500-0515 on 9735 NAU 250 kW / 120 deg to N&ME Arabic Fri
 0600-0615 on 11655 NAU 125 kW / 180 deg to NoAf Arabic Mon-Sat Dardasha 7
 0600-0630 on 11655 NAU 125 kW / 180 deg to NoAf Arabic Sun Dardasha 7
 0700-0730 on 5945 NAU 100 kW / 122 deg to WeEu English Sun
 0700-0745 on 5945 NAU 100 kW / 122 deg to WeEu English Sat
 0830-1000 on 17535 NAU 125 kW / 140 deg to NEAf Arabic Fri
 1100-1115 on 21480 MDC 125 kW / 045 deg to EaAs Cantonese Tue-Thu
 1100-1130 on 21480 MDC 125 kW / 045 deg to EaAs English Sun
 1100-1130 on 21480 MDC 125 kW / 045 deg to EaAs English Sat
 1115-1130 on 21480 MDC 125 kW / 045 deg to EaAs Chinese Mon
 1115-1130 on 21480 MDC 125 kW / 045 deg to EaAs English Sun
 1130-1200 on 21480 MDC 125 kW / 045 deg to EaAs Japanese Sun
 1300-1400 on 11860 TRM 250 kW / 045 deg to KRE Korean Mon-Sat VOWilderness
 1300-1430 on 11860 TRM 250 kW / 045 deg to KRE Korean Sun VOWilderness
 1400-1430 on 17495 ISS 250 kW / 083 deg to SoAs English 1st Sun
 1430-1500 on 17495 NAU 250 kW / 095 deg to SoAs English Sat/Sun
 1515-1530 on 17600 NAU 100 kW / 095 deg to SoAs Urdu Sat
 1530-1600 on 17600 NAU 100 kW / 095 deg to SoAs Punjabi Fri
 1530-1600 on 17600 NAU 100 kW / 095 deg to SoAs English Sat
 1530-1730 on 15750 SOF 100 kW / 126 deg to WeAs Persian
 1600-1615 on 15320 ISS 250 kW / 105 deg to WeAs Persian Dardasha 7
 1600-1630 on 17515 NAU 100 kW / 148 deg to EaAf Oromo Sun/Mon/Thu/Fri
 1600-1700 on 17515 NAU 100 kW / 148 deg to EaAf Oromo Sat
 1630-1645 on 15215 MOS 125 kW / 095 deg to SoAs Tamil Fri
 1630-1645 on 15215 MOS 125 kW / 115 deg to SoAs Tamil Sun
 1630-1730 on 15160 NAU 100 kW / 150 deg to CeAf Nuer/Dinka
 1630-1800 on 17515 NAU 100 kW / 148 deg to EaAf Amharic Sun
 1700-1715 on 13580 MOS 300 kW / 125 deg to N&ME Arabic Mon/Tue/Thu/Fri
 1700-1715 on 13720 NAU 125 kW / 120 deg to N/ME Arabic Dardasha 7
 1700-1715 on 13810 ISS 100 kW / 120 deg to N&ME Arabic Sat/Sun
 1700-1715 on 15215 MOS 100 kW / 115 deg to N&ME English Fri
 1700-1730 on 15215 MOS 100 kW / 115 deg to N&ME English Thu
 1700-1730 on 13580 MOS 300 kW / 125 deg to N&ME Arabic Wed
 1700-1730 on 13810 ISS 100 kW / 120 deg to N&ME Arabic Thu+
 1700-1730 on 17515 NAU 100 kW / 148 deg to EaAf Tigrinya Mon/Wed/Fri
 1700-1745 on 13810 ISS 100 kW / 120 deg to N&ME Arabic Tue+
 1700-1800 on 13810 ISS 100 kW / 120 deg to N&ME Arabic Mon/Wed/Fri
 1700-1800 on 17515 NAU 100 kW / 148 deg to EaAf Amharic Tue/Thu/Sat
 1700-1900 on 15215 MOS 100 kW / 115 deg to N&ME English Sat/Sun
 1715-1745 on 13720 NAU 125 kW / 120 deg to N/ME English Fri
 1730-1800 on 17515 NAU 100 kW / 148 deg to EaAf Amharic Mon/Wed/Fri

1800-1815 on 6130 NAU 100 kW / 090 deg to EaEu Ukrainian Thu
 1800-1815 on 6130 NAU 100 kW / 090 deg to EaEu Russian Fri
 1800-1815 on 9430 MOS 300 kW / non-dir to WeAs English Sat
 1800-1815 on 11855 NAU 100 kW / 105 deg to WeAs English Sat
 1800-1830 on 6130 NAU 100 kW / 090 deg to EaEu Russian Tue
 1800-1830 on 9430 MOS 300 kW / non-dir to WeAs English Sun
 1800-1830 on 11855 NAU 100 kW / 105 deg to WeAs Persian Fri
 1800-1830 on 17515 NAU 100 kW / 148 deg to EaAf Somali Sat/Sun
 1800-1830 on 17515 NAU 100 kW / 148 deg to EaAf Tigrinya Tue/Thu
 1800-1900 on 6130 NAU 100 kW / 090 deg to EaEu English Sun
 1800-1900 on 11855 NAU 100 kW / 105 deg to WeAs Persian Thu
 1815-1900 on 11855 NAU 100 kW / 105 deg to WeAs Persian Sun
 1830-1845 on 6130 NAU 100 kW / 090 deg to EaEu English Sat
 1830-1900 on 11855 NAU 100 kW / 105 deg to WeAs Persian Tue
 1830-1900 on 17515 NAU 100 kW / 148 deg to EaAf Amharic Fri/Sat
 1830-1915 on 9635 SOF 100 kW / 126 deg to WeAs English Sun
 1830-1900 on 17515 NAU 100 kW / 148 deg to EaAf Tigrinya Sun
 2000-2015 on 5930 NAU 250 kW / 120 deg to N/ME Arabic Dardasha 7
 2030-2045 on 9515 NAU 250 kW / 180 deg to NoAf Arabic Dardasha 7

Radio Japan NHK World

0200-0400 on 11680 NAU 250 kW / 140 deg to WeAs Japanese
 1700-1900 on 15445 NAU 250 kW / 140 deg to WeAs Japanese

Adventist World Radio

0300-0330 on 9530 ISS 250 kW / 125 deg to EaAf Tigrigna
 0300-0400 on 11610 NAU 250 kW / 140 deg to EaAf Oromo/Amharic
 0400-0430 on 6020 NAU 100 kW / 130 deg to EaEu Bulgarian
 0400-0600 on 15225 NAU 250 kW / 130 deg to N/ME Arabic
 0700-0800 on 15225 NAU 100 kW / 210 deg to NoAf Arabic
 0800-0830 on 15140 NAU 100 kW / 205 deg to NoAf French
 0800-0900 on 15225 NAU 100 kW / 210 deg to NoAf Kabyle/Tachelhit
 0830-0900 on 15225 NAU 100 kW / 210 deg to NoAf
 0900-1000 on 9790 NAU 100 kW / 180 deg to SoEu Italian Sun
 1130-1200 on 15605 TRM 125 kW / 045 deg to SoAs Shoshoni
 1200-1230 on 11800 TRM 125 kW / 045 deg to SoAs Mon
 1230-1300 on 12085 TRM 125 kW / 025 deg to SoAs Meitei Sun/Wed/Fri
 1230-1300 on 12085 TRM 125 kW / 025 deg to SoAs Bangla Mon/Tue/Thu/Sat
 1300-1330 on 17810 NAU 250 kW / 070 deg to EaAs Chinese Mon-Fri
 1300-1330 on 17810 NAU 250 kW / 070 deg to EaAs Uighur Sat/Sun
 1330-1500 on 17810 NAU 250 kW / 070 deg to EaAs Chinese
 1500-1530 on 15735 NAU 250 kW / 080 deg to SoAs Nepali
 1500-1600 on 15265 NAU 250 kW / 090 deg to SoAs Punjabi/Hindi
 1530-1600 on 15335 NAU 250 kW / 075 deg to SoAs English Sat-Wed
 1530-1600 on 15335 NAU 250 kW / 075 deg to SoAs Tibetan Thu/Fri
 1600-1630 on 9830 NAU 100 kW / 133 deg to EaEu Bulgarian
 1630-1700 on 17575 ISS 250 kW / 125 deg to EaAf Somali
 1730-1800 on 15155 NAU 250 kW / 140 deg to EaAf Oromo
 1730-1800 on 15170 NAU 100 kW / 210 deg to NoAf Kabyle
 1900-1930 on 11945 ISS 250 kW / 200 deg to NoAf Wolof
 1900-1930 on 11955 MOS 300 kW / 190 deg to WeAf Hausa
 1900-1930 on 15205 ISS 100 kW / 185 deg to WeAf Fulfulde
 1900-2000 on 9610 NAU 100 kW / 210 deg to NoAf Arabic/Tachelhit
 1900-2000 on 15260 NAU 100 kW / 215 deg to NoAf Arabic
 1900-2100 on 11610 NAU 250 kW / 130 deg to N/ME Arabic
 1930-2000 on 15205 NAU 250 kW / 180 deg to WeAf Ibo
 2000-2030 on 9610 NAU 100 kW / 210 deg to NoAf French
 2000-2030 on 11830 ISS 250 kW / 165 deg to WCAf French
 2030-2100 on 11755 ISS 250 kW / 165 deg to WCAf Yoruba

Radio Mashaal

0400-0600 on 15560 NAU 250 kW / 090 deg to WeAs Pashto
 0600-0900 on 15360 NAU 250 kW / 090 deg to WeAs Pashto

Trans World Radio

0700-0750 on 6105 NAU 100 kW / 285 deg to NoEu English
 0830-0900 on 7215 NAU 100 kW / 135 deg to WeEu Hungarian
 1400-1430 on 7215 NAU 100 kW / 065 deg to EaEu Belarussian Mon
 1400-1430 on 7215 NAU 100 kW / 065 deg to EaEu Russian Tue-Fri

Transportradio:

0800-1000 on 6095 NAU 100 kW / 230 deg to WeEu Dutch/Music Mon-Fri

XVRB The Music Museum

0900-1000 on 6045 NAU 100 kW / 275 deg to CeEu English/Music 3rd Sun

Iceman Radio

0900-1000 on 6045 NAU 100 kW / 275 deg to CeEu Dutch/En/Ge/Fr 4th Sun

Radio Joystick

1000-1100 on 7330 ISS 100 kW / 060 deg to CeEu German 1st Sun

Evangelische Missions Gemeiden

1030-1100 on 6055 NAU 100 kW / 122 deg to CeEu German Sat/Sun
 1100-1130 on 13710 NAU 250 kW / 045 deg to FE Russian Sat
 1500-1530 on 11695 ISS 250 kW / 060 deg to EaEu Russian Sat

Missionswerke Arche Stimme des Trostes

1100-1115 on 5945 NAU 100 kW / 122 deg to CeEu German Sun+

Brother Stair/The Overcomer Ministries

1400-1600 on 9655 NAU 100 kW / 275 deg to WeEu English Mon-Thu
 1400-1600 on 9655 MOS 100 kW / 285 deg to WeEu English Fri-Sun
 1400-1600 on 13810 ISS 100 kW / 120 deg to N&ME English

Pan American Broadcasting

1400-1415 on 15205 ISS 100 kW / 090 deg to SoAs English Sun
 1415-1430 on 15205 ISS 100 kW / 090 deg to SoAs English
 1430-1445 on 15205 ISS 250 kW / 090 deg to SoAs English Sun
 1930-2000 on 9515 NAU 250 kW / 155 deg to NoAf English Sun

Radio Liberty

1400-1500 on 15180 ISS 250 kW / 090 deg to CeAs Turkmen
 1500-1600 on 13615 NAU 250 kW / 090 deg to CeAs Avari/Chechen/Chercassian
 1500-1600 on 15630 ISS 250 kW / 090 deg to CeAs Tajik
 1600-1700 on 5995 NAU 250 kW / 060 deg to EaEu Russian
 1700-1800 on 5930 NAU 250 kW / 090 deg to EaEu Belarussian

Voice of America

0300-0330 on 9815 ISS 250 kW / 160 deg to SDN Arabic Afia Darfur
 1630-1700 on 11655 ISS 250 kW / 150 deg to SDN English So.Sudan Mon-Fri
 1630-1700 on 11905 NAU 250 kW / 150 deg to SDN English So.Sudan Mon-Fri
 1630-1700 on 13870 ISS 250 kW / 150 deg to SDN English So.Sudan Mon-Fri
 1800-1830 on 9645 NAU 250 kW / 160 deg to SDN Arabic Afia Darfur
 1800-1900 on 11925 ISS 250 kW / 130 deg to EaAf Amharic
 1800-1900 on 12005 ISS 250 kW / 130 deg to EaAf Amharic
 1800-1900 on 13870 NAU 250 kW / 140 deg to EaAf Amharic
 1900-1930 on 9600 ISS 250 kW / 155 deg to SDN Arabic Afia Darfur
 1900-1930 on 11925 ISS 250 kW / 130 deg to EaAf Tigrigna Mon-Fri
 1900-1930 on 13870 NAU 250 kW / 140 deg to EaAf Tigrigna Mon-Fri
 2030-2100 on 9815 NAU 250 kW / 190 deg to WCAf Hausa Mon-Fri

HCJB Global Voice

1530-1600 on 13800 NAU 100 kW / 095 deg to CeAs Russian Sat
 1600-1630 on 13800 NAU 100 kW / 095 deg to CeAs Chechen Sat
 2300-2330 on 9835 NAU 100 kW / 240 deg to BRA German
 2300-0045 on 11920 NAU 100 kW / 240 deg to BRA Portuguese

Radio Xoriyo

1600-1630 on 17630 ISS 500 kW / 130 deg to EaAf Somali Tue/Sat

Deewa Radio

1700-1800 on 9780 ISS 250 kW / 090 deg to WeAs Pashto

Voice of Oromo Liberation

1700-1800 on 13830 ISS 100 kW / 125 deg to EaAf Oromo/Amharic Sun/Wed

Radio EYSC - Eritrean Youth Solidarity for Change

1730-1800 on 15310 ISS 100 kW / 125 deg to EaAf Tigrigna Tue/Fri

Christian Science Sentinel

1800-1900 on 9585 NAU 100 kW / 090 deg to EaEu Russian Sat

Lutheran World Federation, Voice of Gospel (Sawtu Linjilia)

1830-1900 on 15315 ISS 500 kW / 180 deg to WCAf Fulfulde

(DX MIX NEWS #784 from Georgi Bancov and Ivo Ivanov, June 04, 2013)

GREECE - Voice of Greece (ERA 5) is still running on shortwave, mainly on 9420 kHz, and ERT World (TV) on satellite.

EBU Geneva is also relaying the streams of ERT World and the Voice of Greece in the Internet:

ERT World: <<http://www3.ebu.ch/cms/en/sites/ebu/contents/news/2013/06/monitor-ert-online.html>>

Voice of Greece: <<http://193.43.93.230/ert.php>>

A chronology of the events can also be read at the following Internet links:

<<http://international.radiobubble.gr/2013/06/the-shutdown-of-ert-live-blog-12-june.html>>

<<http://international.radiobubble.gr/2013/06/ert-shutdown-round-up-of-latest.html>> (13 June)

<<http://international.radiobubble.gr/2013/06/ert-shutdown-live-blog-14-june-2013.html>>

(wb & mb, June 15)

GUAM [and non] - Summer A-13 of Adventist World Radio-AWR As/Pac & AWR Eu/Af:

0000-0100 on 17650 SDA 100 kW / 285 deg to SEAs Burmese/Western Karen

0000-0200 on 12025 SDA 100 kW / 330 deg to EaAs Chinese

0000-0200 on 17880 SDA 100 kW / 315 deg to EaAs Chinese

0100-0200 on 15445 TAI 100 kW / 250 deg to SEAs Vietnamese Sat

0100-0200 on 17650 SDA 100 kW / 300 deg to EaAs Chinese

0200-0300 on 9690 MOS 300 kW / 090 deg to WeAs Urdu/Punjabi

0230-0330 on 3215 MDC 050 kW / 020 deg to MDC Malagasy

0300-0330 on 9530 ISS 250 kW / 125 deg to EaAf Tigrigna

0300-0330 on 17645 SDA 100 kW / 345 deg to FERu Russian

0300-0400 on 11610 NAU 250 kW / 140 deg to EaAf Oromo/Amharic

0330-0400 on 9505 MOS 300 kW / 100 deg to WeAs Farsi

0400-0430 on 6020 NAU 100 kW / 130 deg to EaEu Bulgarian

0400-0600 on 15225 NAU 250 kW / 125 deg to N/ME Arabic

0430-0500 on 6155 MOS 300 kW / 220 deg to NoAf French

0500-0530 on 11955 MOS 300 kW / 190 deg to WeAf Hausa

0700-0800 on 15225 NAU 100 kW / 210 deg to NoAf Arabic

0800-0830 on 15140 NAU 100 kW / 205 deg to NoAf French

0800-0830 on 15225 NAU 100 kW / 210 deg to NoAf Kabyle

0830-0900 on 15225 NAU 100 kW / 205 deg to NoAf Tachelhit

0900-1000 on 9790 NAU 100 kW / 180 deg to SoEu Italian Sun

1000-1100 on 12010 SDA 100 kW / 315 deg to EaAs Chinese Mon-Sat

1000-1100 on 12010 SDA 100 kW / 315 deg to EaAs Cantonese Sun

1000-1100 on 17520 SDA 100 kW / 300 deg to EaAs Chinese Mon-Sat

1000-1100 on 17520 SDA 100 kW / 300 deg to EaAs Cantonese Sun

1030-1100 on 17550 SDA 100 kW / 270 deg to SEAs Ilokano Sun/FriAWR As/Pac

1030-1100 on 17550 SDA 100 kW / 270 deg to SEAs Tagalog Sat/Mon-Thu

1100-1130 on 15620 SDA 100 kW / 255 deg to SEAs Indonesian

1100-1200 on 11700 SDA 100 kW / 330 deg to EaAs Chinese

1100-1200 on 12105 SDA 100 kW / 315 deg to EaAs Chinese

1100-1200 on 15515 SDA 100 kW / 300 deg to EaAs Chinese

1130-1200 on 15605 TRM 125 kW / 045 deg to SoAs Shoshoni As/Pac

1130-1200	on	15620	SDA	100	kW	/	255	deg	to	SEAs	Sundanese	Tue/Thu/Sat/Sun
1130-1200	on	15620	SDA	100	kW	/	255	deg	to	SEAs	Javanese	Mon/Wed/Fri
1200-1230	on	11800	TRM	125	kW	/	045	deg	to	SoAs	Mon	
1200-1300	on	9800	SDA	100	kW	/	330	deg	to	EaAs	Chinese	
1200-1300	on	12105	SDA	100	kW	/	315	deg	to	EaAs	Chinese	
1200-1300	on	15515	SDA	100	kW	/	300	deg	to	EaAs	Chinese	
1230-1300	on	12085	TRM	125	kW	/	025	deg	to	SoAs	Meitei	Sun/Wed/Fri
1230-1300	on	12085	TRM	125	kW	/	025	deg	to	SoAs	Bangla	Mon/Tue/Thu/Sat
1300-1330	on	15215	SDA	100	kW	/	285	deg	to	SoAs	Bengali	
1300-1330	on	15445	SDA	100	kW	/	285	deg	to	SEAs	Kachin	
1300-1330	on	17810	NAU	250	kW	/	070	deg	to	EaAs	Chinese	Mon-Fri
1300-1330	on	17810	NAU	250	kW	/	070	deg	to	EaAs	Uighur	Sat/Sun
1300-1400	on	12105	SDA	100	kW	/	315	deg	to	EaAs	Chinese	
1300-1400	on	15320	SDA	100	kW	/	270	deg	to	SEAs	Khmer	
1300-1400	on	17670	MDC	250	kW	/	060	deg	to	SEAs	Vietnamese	
1330-1400	on	9720	SDA	100	kW	/	345	deg	to	FERu	Russian	
1330-1400	on	15430	SDA	100	kW	/	270	deg	to	SEAs	Lao	Thu/Sat
1330-1400	on	15430	SDA	100	kW	/	270	deg	to	SEAs	Thai	Mon-Wed/Fri
1330-1400	on	15660	SDA	100	kW	/	285	deg	to	SEAs	Hmong	Thu/Fri
1330-1400	on	15660	SDA	100	kW	/	285	deg	to	SEAs	Assamese	Sun/Wed
1330-1400	on	15660	SDA	100	kW	/	255	deg	to	SEAs	Malay	Mon/Tue/Sat
1330-1500	on	17810	NAU	250	kW	/	070	deg	to	EaAs	Chinese	
1400-1430	on	15165	SDA	100	kW	/	270	deg	to	SoAs	Sinhalese	
1400-1430	on	15375	SDA	100	kW	/	285	deg	to	SEAs	Uncoded languages	
1400-1430	on	15440	MOS	300	kW	/	090	deg	to	WeAs	Urdu	
1400-1500	on	12105	SDA	100	kW	/	315	deg	to	EaAs	Chinese	
1400-1500	on	13575	SDA	100	kW	/	300	deg	to	EaAs	Chinese	
1400-1500	on	15150	SDA	100	kW	/	285	deg	to	SEAs	Western Karen	
1430-1500	on	17605	MOS	300	kW	/	145	deg	to	EaAf	Afar	
1430-1530	on	6155	MDC	050	kW	/	020	deg	to	MDC	Malagasy	
1430-1530	on	15715	SDA	100	kW	/	285	deg	to	SEAs	Burmese	
1500-1530	on	11940	MOS	300	kW	/	120	deg	to	N/ME	Turkish	
1500-1530	on	15680	SDA	100	kW	/	285	deg	to	SoAs	Tamil	
1500-1530	on	15690	SDA	100	kW	/	285	deg	to	SoAs	Lushai	
1500-1530	on	15735	NAU	250	kW	/	080	deg	to	SoAs	Nepali	
1500-1600	on	11995	SDA	100	kW	/	285	deg	to	SEAs	Western Karen/Marathi	
1500-1600	on	15265	NAU	250	kW	/	090	deg	to	SoAs	Punjabi/Hindi	
1500-1600	on	15605	SDA	100	kW	/	285	deg	to	SoAs	Telugu/Hindi	
1530-1600	on	15290	MOS	300	kW	/	090	deg	to	WeAs	Punjabi	
1530-1600	on	15335	NAU	250	kW	/	075	deg	to	SoAs	English	Sat-Wed
1530-1600	on	15335	NAU	250	kW	/	075	deg	to	SoAs	Tibetan	Thu/Fri
1530-1600	on	15620	SDA	100	kW	/	285	deg	to	SoAs	Kannada	
1530-1600	on	15680	SDA	100	kW	/	270	deg	to	SoAs	Malayalam	
1600-1630	on	9830	NAU	100	kW	/	133	deg	to	EaEu	Bulgarian	
1600-1630	on	15260	MOS	300	kW	/	090	deg	to	WeAs	Urdu	
1600-1630	on	15285	SDA	100	kW	/	300	deg	to	WeAs	Urdu	
1600-1630	on	15360	SDA	100	kW	/	285	deg	to	SoAs	English	
1600-1630	on	15670	SDA	100	kW	/	285	deg	to	SoAs	English	
1630-1700	on	15150	MOS	300	kW	/	100	deg	to	WeAs	Farsi	
1630-1700	on	15360	SDA	100	kW	/	300	deg	to	SoAs	English	Mon/Wed/Fri
1630-1700	on	15360	SDA	100	kW	/	300	deg	to	SoAs	Sindhi	Sun/Tue/Thu/Sat
1630-1700	on	17575	ISS	250	kW	/	125	deg	to	EaAf	Somali	
1700-1800	on	9600	MEY	250	kW	/	019	deg	to	CEAf	Swahili/Masai	
1730-1800	on	15155	NAU	250	kW	/	140	deg	to	EaAf	Oromo	
1730-1800	on	15170	NAU	100	kW	/	210	deg	to	NoAf	Kabyle	
1830-1900	on	11660	MOS	300	kW	/	190	deg	to	NEAf	Arabic	
1830-1900	on	11830	MEY	250	kW	/	019	deg	to	CEAf	English	
1900-1930	on	11945	ISS	250	kW	/	200	deg	to	NoAf	Wolof	
1900-1930	on	11955	MOS	300	kW	/	190	deg	to	WeAf	Hausa	
1900-1930	on	15205	ISS	100	kW	/	185	deg	to	WeAf	Fulfulde	
1900-2000	on	9610	NAU	100	kW	/	210	deg	to	NoAf	Arabic/Tachelhit	
1900-2000	on	15260	NAU	100	kW	/	215	deg	to	NoAf	Arabic	
1900-2100	on	11610	NAU	250	kW	/	130	deg	to	N/ME	Arabic	
1930-2000	on	15205	NAU	250	kW	/	180	deg	to	WeAf	Ibo	

1930-2000 on 15220 MOS 300 kW / 170 deg to CeAf French
 2000-2030 on 9610 NAU 100 kW / 210 deg to NoAf French
 2000-2030 on 11830 ISS 250 kW / 180 deg to NoAf French
 2000-2030 on 11955 MOS 300 kW / 210 deg to WeAf Dyula
 2030-2100 on 11755 ISS 250 kW / 165 deg to WCAf Yoruba
 2030-2100 on 15155 MOS 300 kW / 210 deg to WeAf French
 2100-2130 on 11955 MOS 300 kW / 210 deg to WeAf English
 2100-2200 on 11750 SDA 100 kW / 315 deg to EaAs Chinese Mon-Sat
 2100-2200 on 11750 SDA 100 kW / 315 deg to EaAs Cantonese Sun
 2100-2200 on 11790 SDA 100 kW / 330 deg to EaAs Korean
 2100-2200 on 15420 SDA 100 kW / 315 deg to EaAs Chinese Mon-Sat
 2100-2200 on 15420 SDA 100 kW / 315 deg to EaAs Cantonese Sun
 2200-2300 on 15320 SDA 100 kW / 255 deg to SEAs Indonesian/English
 2200-2230 on 15435 SDA 100 kW / 255 deg to SEAs Sundanese Mon/Wed/Fri/Sat
 2200-2230 on 15435 SDA 100 kW / 255 deg to SEAs Javanese Tue/Thu/Sun
 2200-2400 on 12120 SDA 100 kW / 330 deg to EaAs Chinese
 2300-2400 on 17520 SDA 100 kW / 315 deg to EaAs Chinese
 2300-2400 on 17650 SDA 100 kW / 270 deg to SEAs Vietnamese Mon-Fri
 2300-2400 on 17650 SDA 100 kW / 270 deg to SEAs Vietnamese/English Sat/Sun
 (DX MIX NEWS #781 from Georgi Bancov and Ivo Ivanov, May 15, 2013)

INDIA - Summer A-13 SW schedule of All India Radio:

0000-0045 7270 CNI 100 kW non-dir to SAs Tamil
 0000-0045 9835 DEL 100 kW 174 deg to SAs Tamil
 0000-0045 9910 ALG 250 kW 132 deg to SEAs Tamil
 0000-0045 11740 PAN 250 kW 120 deg to SAs Tamil
 0000-0045 11985 DEL 250 kW 174 deg to SAs Tamil
 0000-0045 13795 BGL 500 kW 108 deg to SEAs Tamil
 0015-0430 6155 ALG 250 kW 282 deg to SEAs Urdu
 0015-0430 7340 MUM 100 kW 010 deg to SAs Urdu
 0015-0430 9595 DEL 250 kW 334 deg to SAs Urdu
 0015-0430 11620 DEL 250 kW 334 deg to SAs Urdu
 0045-0115 7270 CNI 100 kW non-dir to SAs Sinhala
 0045-0115 11740 PAN 250 kW 120 deg to SAs Sinhala
 0045-0115 11985 DEL 250 kW 174 deg to SAs Sinhala
 0100-0200 5990 DEL 250 kW 334 deg to SAs Sindhi
 0100-0200 7370 ALG 250 kW 282 deg to SAs Sindhi
 0100-0200 9635 ALG 250 kW 312 deg to SAs Sindhi
 0130-0230 7420 GUW 050 kW 130 deg to SAs Nepali
 0130-0230 9810 ALG 250 kW 065 deg to CAs Nepali
 0215-0300 9835 ALG 250 kW 312 deg to WAs Pashto
 0215-0300 9910 ALG 250 kW 282 deg to WAs Pashto
 0215-0300 11740 PAN 250 kW 300 deg to WAs Pashto
 0215-0300 13695 BGL 500 kW 300 deg to WAs Kannada
 0215-0300 15120 BGL 500 kW 300 deg to WAs Kannada
 0300-0345 9835 ALG 250 kW 312 deg to WAs Dari
 0300-0345 9910 ALG 250 kW 282 deg to WAs Dari
 0300-0345 11740 PAN 250 kW 300 deg to WAs Dari
 0315-0415 11840 DEL 250 kW 282 deg to NE/ME Hindi
 0315-0415 13695 BGL 500 kW 300 deg to WAs Hindi
 0315-0415 15120 BGL 500 kW 240 deg to EAf Hindi
 0315-0415 15185 PAN 250 kW 205 deg to EAf Hindi
 0330-0430 7420 HYD 050 kW 125 deg to SAs Bengali
 0400-0430 11670 ALG 250 kW 282 deg to WAs Farsi
 0400-0430 15210 PAN 250 kW 300 deg to WAs Farsi
 0400-0430 15770 DEL 250 kW 282 deg to WAs Farsi
 0415-0430 15120 BGL 500 kW 240 deg to EAf Gujarati
 0415-0430 15185 PAN 250 kW 205 deg to EAf Gujarati
 0430-0530 11670 ALG 250 kW 282 deg to NE/ME Arabic
 0430-0530 15210 PAN 250 kW 300 deg to NE/ME Arabic
 0430-0530 15770 DEL 250 kW 282 deg to NE/ME Arabic
 0430-0530 15120 BGL 500 kW 240 deg to EAf Hindi
 0430-0530 15185 PAN 250 kW 205 deg to EAf Hindi
 0700-0800 7250 GKP 050 kW 015 deg to SAs Nepali

0700-0800	7420	GUW	050	kW	130	deg	to	SAs	Nepali
0700-0800	9595	DEL	100	kW	342	deg	to	SAs	Nepali
0700-0800	11850	DEL	100	kW	102	deg	to	SAs	Nepali
0800-1100	7420	HYD	050	kW	125	deg	to	SAs	Bengali
0830-1130	7250	GKP	050	kW	015	deg	to	SAs	Urdu/Hindi/English
0830-1130	7340	MUM	100	kW	010	deg	to	SAs	Urdu/Hindi/English
0830-1130	9595	DEL	100	kW	342	deg	to	SAs	Urdu/Hindi/English
0830-1130	11620	DEL	250	kW	334	deg	to	SAs	Urdu/Hindi/English
0845-0945	15770	ALG	250	kW	132	deg	to	SEAs	Indonesian
0845-0945	17510	DEL	250	kW	132	deg	to	SEAs	Indonesian
0845-0945	17875	BGL	500	kW	120	deg	to	SEAs	Indonesian
1000-1100	7270	CNI	100	kW	non-dir	to	SAs	English	
1000-1100	13605	BGL	500	kW	058	deg	to	EAs	English
1000-1100	13695	BGL	500	kW	120	deg	to	SEAs	English
1000-1100	15030	ALG	250	kW	060	deg	to	EAs	English
1000-1100	15410	BGL	500	kW	060	deg	to	EAs	English
1000-1100	17510	DEL	250	kW	132	deg	to	SEAs	English
1000-1100	17895	ALG	250	kW	132	deg	to	SEAs	English
1115-1200	11670	BGL	500	kW	060	deg	to	SEAs	Thai
1115-1200	13645	DEL	250	kW	132	deg	to	SEAs	Thai
1115-1200	15410	PAN	250	kW	120	deg	to	SEAs	Thai
1115-1215	7270	CNI	100	kW	non-dir	to	SAs	Tamil	
1115-1215	9810	PAN	250	kW	120	deg	to	SAs	Tamil
1115-1215	13695	BGL	500	kW	108	deg	to	SEAs	Tamil
1115-1215	15050	DEL	250	kW	174	deg	to	SAs	Tamil
1115-1215	15770	ALG	250	kW	132	deg	to	SEAs	Tamil
1115-1215	17510	DEL	250	kW	174	deg	to	SAs	Tamil
1145-1315	11840	ALG	250	kW	065	deg	to	EAs	Chinese
1145-1315	13605	BGL	500	kW	058	deg	to	EAs	Chinese
1145-1315	15795	BGL	500	kW	035	deg	to	EAs	Chinese
1215-1245	9810	PAN	250	kW	120	deg	to	SAs	Telugu
1215-1245	13695	BGL	500	kW	108	deg	to	SEAs	Telugu
1215-1245	15770	ALG	250	kW	132	deg	to	SEAs	Telugu
1215-1315	11710	DEL	050	kW	102	deg	to	SAs	Burmese
1215-1315	15040	DEL	100	kW	102	deg	to	SAs	Burmese
1215-1330	7420	GUW	050	kW	130	deg	to	SAs	Tibetan
1215-1330	9575	BGL	500	kW	038	deg	to	CAs	Tibetan
1215-1330	11775	PAN	250	kW	025	deg	to	CAs	Tibetan
1230-1500	6165	DEL	250	kW	334	deg	to	SAs	Sindhi
1230-1500	7340	MUM	100	kW	010	deg	to	SAs	Sindhi
1230-1500	9620	ALG	250	kW	282	deg	to	WAs	Sindhi
1300-1500	7270	CNI	100	kW	non-dir	to	SAs	Sinhala	
1300-1500	9820	PAN	250	kW	120	deg	to	SAs	Sinhala
1315-1415	9910	DEL	250	kW	282	deg	to	WAs	Dari
1315-1415	11670	BGL	500	kW	300	deg	to	WAs	Dari
1330-1430	7420	GUW	050	kW	130	deg	to	SAs	Nepali
1330-1430	11775	PAN	250	kW	025	deg	to	CAs	Nepali
1330-1500	9690	BGL	500	kW	090	deg	to	SEAs	English
1330-1500	11620	DEL	250	kW	132	deg	to	SEAs	English
1330-1500	13710	BGL	500	kW	120	deg	to	SEAs	English
1415-1515	9910	DEL	250	kW	282	deg	to	WAs	Pashto
1415-1515	11670	BGL	500	kW	300	deg	to	WAs	Pashto
1430-1930	6045	DEL	250	kW	334	deg	to	SAs	Urdu
1445-1515	7420	GUW	050	kW	130	deg	to	SAs	Bengali
1500-1600	6165	DEL	250	kW	334	deg	to	SAs	Baluchi
1500-1600	7340	MUM	100	kW	010	deg	to	SAs	Baluchi
1500-1600	9620	ALG	250	kW	282	deg	to	WAs	Baluchi
1515-1600	11620	DEL	250	kW	245	deg	to	EAF	Gujarati
1515-1600	13640	BGL	500	kW	240	deg	to	EAF	Gujarati
1515-1600	15175	PAN	250	kW	205	deg	to	EAF	Gujarati
1515-1615	9950	DEL	250	kW	245	deg	to	EAF	Swahili
1515-1615	13605	BGL	500	kW	240	deg	to	EAF	Swahili
1515-1615	17670	DEL	250	kW	245	deg	to	EAF	Swahili
1515-1545	9910	DEL	250	kW	282	deg	to	WAs	English

1515-1545 11670 BGL 500 kW 300 deg to WAs English
 1600-1730 7420 GUW 050 kW 130 deg to SAs Bengali
 1600-1930 6155 BGL 500 kW 060 deg to EAs Urdu
 1615-1715 9595 BGL 500 kW 325 deg to EEU Russian
 1615-1730 7250 PAN 250 kW 300 deg to WAs Hindi
 1615-1730 9445 DEL 250 kW 282 deg to WAs Hindi
 1615-1730 9950 DEL 250 kW 245 deg to EAF Hindi
 1615-1730 12025 PAN 250 kW 300 deg to WAs Hindi
 1615-1730 13605 BGL 500 kW 240 deg to EAF Hindi
 1615-1730 17670 DEL 250 kW 245 deg to EAF Hindi
 1615-1730 9620 ALG 250 kW 282 deg to WAs Farsi
 1615-1730 11710 PAN 250 kW 300 deg to WAs Farsi
 1615-1730 13640 BGL 500 kW 300 deg to WAs Farsi
 1730-1830 7250 PAN 250 kW 300 deg to WAs Malayalam
 1730-1830 12025 PAN 250 kW 300 deg to WAs Malayalam
 1730-1945 9620 ALG 250 kW 282 deg to NE/ME Arabic
 1730-1945 11710 PAN 250 kW 300 deg to NE/ME Arabic
 1730-1945 13640 BGL 500 kW 300 deg to NE/ME Arabic
 1745-1945 7550 BGL 500 kW 320 deg to WEU English
 1745-1945 9445 ALG 250 kW 282 deg to NEAF English
 1745-1945 11580 DEL 250 kW 282 deg to NAF English
 1745-1945 11670 BGL 500 kW 320 deg to WEU English
 1745-1945 11935 MUM 100 kW 250 deg to CEAF English
 1745-1945 13695 BGL 500 kW 240 deg to EAF English
 1745-1945 17670 DEL 250 kW 245 deg to EAF English
 1945-2030 9620 ALG 250 kW 282 deg to NWAf French
 1945-2030 11710 DEL 250 kW 282 deg to NWAf French
 1945-2030 13640 BGL 500 kW 300 deg to NWAf French
 1945-2045 7550 BGL 500 kW 320 deg to WEU Hindi
 1945-2045 11670 BGL 500 kW 320 deg to WEU Hindi
 2045-2230 7550 BGL 500 kW 320 deg to WEU English
 2045-2230 9445 BGL 500 kW 325 deg to WEU English
 2045-2230 9910 ALG 250 kW 132 deg to SEAs English
 2045-2230 11620 BGL 500 kW 120 deg to SEAs English
 2045-2230 11670 BGL 500 kW 320 deg to WEU English
 2045-2230 NF12025 PAN 250 kW 120 deg SEAs English, ex11740 May 20
 2245-0045 9690 BGL 500 kW 090 deg to SEAs English
 2245-0045 9705 PAN 250 kW 120 deg to SEAs English
 2245-0045 11710 ALG 250 kW 132 deg to SEAs English
 2245-0045 13605 BGL 500 kW 058 deg to EAs English
 2300-2400 9910 ALG 250 kW 132 deg to SEAs Hindi
 2300-2400 11740 PAN 250 kW 120 deg to SEAs Hindi
 2300-2400 13795 BGL 500 kW 108 deg to SEAs Hindi

DRM transmissions:

0130-0230 11715 DEL 100 kW 124 deg to CAs Nepali
 0315-0415 17715 DEL 100 kW 245 deg to EAF Hindi
 0415-0430 17715 DEL 100 kW 245 deg to EAF Gujarati
 0430-0530 17715 DEL 100 kW 245 deg to EAF Hindi
 1300-1500 15050 DEL 100 kW 174 deg to SAs Sinhala
 1615-1715 15140 ALG 100 kW 312 deg to EEU Russian
 1745-1945 9950 ALG 100 kW 312 deg to WEU English
 1945-2045 9950 ALG 100 kW 312 deg to WEU Hindi
 2045-2230 9950 ALG 100 kW 312 deg to WEU English
 2245-0045 11645 DEL 100 kW 065 deg to EAs English
 (DX MIX News, Ivo Ivanov-BUL, via wwdxc BC-DX TopNews May 21)

NEW ZEALAND - More changes of Radio New Zealand International:

0459-0650 11725 RAN 050 kW 000 deg AM All Pacific
 0459-0650 11675 RAN 025 kW 000 deg DRM All Pacific
 0651-0758 11725 RAN 050 kW 000 deg AM Tonga
 0651-0758 NF9890RAN 025 kW 000 deg DRM Tonga
 0759-1058 9700 RAN 050 kW 000 deg AM All Pacific
 0759-1058 9890 RAN 025 kW 000 deg DRM All Pacific

1059-1200 9890 RAN 025 kW 000 deg DRM All Pacific
 1059-1200 NF9700RAN 100 kW 325 deg AM Timor, NW Pacific
 1200-1258 NF9700RAN 100 kW 325 deg AM Timor, NW Pacific
 1300-1550 6170 RAN 050 kW 000 deg AM All Pacific
 1551-1746 NF7330RAN 100 kW 035 deg AM Cook Isl, Samoa
 1551-1746 NF6135RAN 035 kW 035 deg DRM Cook Isl, Samoa
 1746-1836 NF9615RAN 100 kW 035 deg AM Cook Isl, Samoa, Tonga
 1746-1836 NF6135RAN 035 kW 035 deg DRM Cook Isl, Samoa, Tonga
 1837-1950 NF9615RAN 100 kW 035 deg AM Cook Isl, Niue, Samoa, Tonga
 1837-1950 NF9630RAN 035 kW 035 deg DRM Cook Isl, Niue, Samoa, Tonga
 1951-2050 11725 RAN 050 kW 035 deg AM Niue, Samoa, Tonga
 1951-2050 NF11675RAN 025 kW 035 deg DRM Niue, Samoa, Tonga
 2051-2150 11725 RAN 050 kW 035 deg AM Solom., Niue, Fiji, Samoa, Tonga
 2051-2150 15720 RAN 025 kW 035 deg DRM Solom., Niue, Fiji, Samoa, Tonga
 2151-0458 15720 RAN 050 kW 000 deg AM All Pacific
 2151-0458 17675 RAN 025 kW 000 deg DRM All Pacific
 (DX MIX News, Ivo Ivanov-BUL, via wwdxc BC-DX TopNews May 21/30)

More changes of Radio New Zealand International from May 30:

0535-0547 15720 RAN 050 kW 000 deg AM PAC English, instead of 11725 kHz.
 (DX MIX News, Ivo Ivanov-BUL, via wwdxc BC-DX TopNews May 30)

OMAN - Frequency change of Radio Sultanate of Oman. First noted on May 16:

1600-2200 NF15560 THU 100 kW 220 deg to EAF Arabic. Good choice, clear frequency. Ex15595 kHz to avoid Vatican Radio in French and English 1600-1630 UT. But on May 17 back again on 15595 kHz.

(Ivo Ivanov-BUL, via wwdxc BC-DX TopNews May 18)

15140 kHz on June 14.

OMAN / SINGAPORE - Frequency changes of BBC from May 13:

1400-1500 NF9705 Oman 250 kW 035 deg to WAs Dari, ex9810 to avoid CNR1

1500-1600 NF9705 SNG 250 kW 315 deg to WAs Pashto, ex9810 to avoid CNR1

(DX MIX News, Ivo Ivanov-BUL, via wwdxc BC-DX TopNews May 21)

RUSSIA - New summer A-13 SW schedule of Radio Rossii:

0000-0100 on 5930 P.K 100 kW / 030 deg to FERu Russian
 0000-0100 on 5940 OKH 100 kW / 030 deg to FERu Russian
 0000-0100 on 6085 KRS 050 kE / 348 deg to FERu Russian
 0000-0100 on 6100 KRS 005 kE / non-dir to FERu Russian
 0000-0100 on 6195 IRK 050 kW / non-dir to FERu Russian
 0000-0100 on 7230 IAK 100 kW / 000 deg to FERu Russian
 0000-0100 on 7320 OKH 100 kW / 045 deg to FERu Russian
 0100-0500 on 5930 P.K 100 kW / 030 deg to FERu Russian
 0100-0500 on 5930 MUR 050 kW / 339 deg to NoRu Russian
 0100-0500 on 5940 OKH 100 kW / 030 deg to FERu Russian
 0100-0500 on 6085 KRS 050 kE / 348 deg to FERu Russian
 0100-0500 on 6100 KRS 005 kE / non-dir to FERu Russian
 0100-0500 on 6160 MUR 050 kW / 333 deg to NoRu Russian
 0100-0500 on 6195 IRK 050 kW / non-dir to FERu Russian
 0100-0500 on 7230 IAK 100 kW / 000 deg to FERu Russian
 0100-0500 on 7320 OKH 100 kW / 045 deg to FERu Russian
 0400-0800 on 12070 MSK 250 kW / 267 deg to WeEu Russian
 0500-1000 on 5930 P.K 100 kW / 030 deg to FERu Russian
 0500-1000 on 5930 MUR 050 kW / 339 deg to NoRu Russian
 0500-1000 on 5940 OKH 100 kW / 030 deg to FERu Russian
 0500-1000 on 6085 KRS 050 kE / 348 deg to FERu Russian
 0500-1000 on 6100 KRS 005 kE / non-dir to FERu Russian
 0500-1000 on 6160 MUR 050 kW / 333 deg to NoRu Russian
 0500-1000 on 6195 IRK 050 kW / non-dir to FERu Russian
 0500-1000 on 7320 OKH 100 kW / 045 deg to FERu Russian
 0830-1300 on 13665 MSK 250 kW / 267 deg to WeEu Russian
 1000-1300 on 5930 P.K 100 kW / 030 deg to FERu Russian
 1000-1300 on 5930 MUR 050 kW / 339 deg to NoRu Russian
 1000-1300 on 5940 OKH 100 kW / 030 deg to FERu Russian
 1000-1300 on 6085 KRS 050 kE / 348 deg to FERu Russian

1000-1300 on 6100 KRS 005 kE / non-dir to FERu Russian
 1000-1300 on 6160 MUR 050 kW / 333 deg to NoRu Russian
 1000-1300 on 6195 IRK 050 kW / non-dir to FERu Russian
 1000-1300 on 7320 OKH 100 kW / 045 deg to FERu Russian
 1300-1700 on 5930 MUR 050 kW / 339 deg to NoRu Russian
 1300-1700 on 6085 KRS 050 kE / 348 deg to FERu Russian
 1300-1700 on 6100 KRS 005 kE / non-dir to FERu Russian
 1300-1700 on 6160 MUR 050 kW / 333 deg to NoRu Russian
 1300-1700 on 6195 IRK 050 kW / non-dir to FERu Russian
 1330-1700 on 13735 MSK 250 kW / 267 deg to WeEu Russian
 1700-1900 on 5930 P.K 100 kW / 030 deg to FERu Russian
 1700-1900 on 5930 MUR 050 kW / 339 deg to NoRu Russian
 1700-1900 on 5940 OKH 100 kW / 030 deg to FERu Russian
 1700-1900 on 6160 MUR 050 kW / 333 deg to NoRu Russian
 1700-1900 on 7320 OKH 100 kW / 045 deg to FERu Russian
 1730-2100 on 7215 MSK 250 kW / 267 deg to WeEu Russian
 1900-2100 on 5930 P.K 100 kW / 030 deg to FERu Russian
 1900-2100 on 5930 MUR 050 kW / 339 deg to NoRu Russian
 1900-2100 on 5940 OKH 100 kW / 030 deg to FERu Russian
 1900-2100 on 6160 MUR 050 kW / 333 deg to NoRu Russian
 1900-2100 on 7230 IAK 100 kW / 000 deg to FERu Russian
 1900-2100 on 7320 OKH 100 kW / 045 deg to FERu Russian
 2100-2400 on 6085 KRS 050 kE / 348 deg to FERu Russian
 2100-2400 on 6100 KRS 005 kE / non-dir to FERu Russian
 2100-2400 on 6195 IRK 050 kW / non-dir to FERu Russian
 2100-2400 on 7230 IAK 100 kW / 000 deg to FERu Russian
 (DX MIX NEWS #780 from Georgi Bancov and Ivo Ivanov, May 10, 2013)

RWANDA - Frequency changes of Deutsche Welle from June 1:

0500-0530 NF 15275 RRW 250 kW 295 deg to Waf English, ex12045
 0530-0600 NF 15275 RRW 250 kW 295 deg to Waf English, ex12045
 0600-0630 NF 15275 RRW 250 kW 295 deg to Waf English, ex12045
 0630-0700 NF 15440 RRW 250 kW 280 deg to Waf English, ex15275
 1200-1300 NF 12070 RRW 250 kW non-dir to Waf French, ex 9800
 1600-1700 NF 12070 RRW 250 kW 030 deg to Eaf Amharic, ex 9800
 2000-2100 NF 15275 RRW 250 kW 295 deg to Caf English, addit. frequency
 (DX MIX News, Ivo Ivanov-BUL, via wwdxc BC-DX TopNews May 28)

SRI LANKA - New frequency for next hour-long PCJ broadcast via Sri Lanka is 11835 kHz:
 from <<http://www.pcjmedia.com>>

June 16th - 1300-1400 UTC June 23rd - 1300-1400 UTC
 June 30th - 1300-1400 UTC July 7th - 1300-1400 UTC
 Frequency: 11835 kHz (25 mb). Target Area: East and Southeast Asia. Power: 125 kW
 (Keith Perron-TWN, via Mike Terry-UK, via Alan Pennington-UK, BrDXC-UK May 29)

New schedule of Sri Lanka Broadcasting Corporation from June 1:

0115-0215 on 11905 TRM 125 kW / 345 deg to SAs Bengali/Tamil/Hindi
 0215-0330 on 9770 TRM 125 kW / 345 deg to SAs English
 1115-1215 on 9770#TRM 125 kW / 345 deg to SAs Telugu/MalayaLam/Tamil
 # totally blocked by KBS World Radio in Vietnamese/Chinese
 All other transmissions from Colombo-Ekala are cancelled.
 (DX MIX NEWS #784 from Georgi Bancov and Ivo Ivanov, June 04, 2013)

U.K. [non] - The BBC 2013 winter solstice broadcast to the British Antarctic Survey will occur June 21 at 2130-2200 GMT. I am told tests for the broadcast will be conducted June 14 at 2130-2145:

5905 Kranji-SNG 185°
 5965 Al Dhabayya-UAE 203°
 7350 Ascension 207°
 9535 Ascension 207°
 9890 Woofferton-UK 182°
 (Dan K4VOA, DXPlorer)

U.S.A. - The NASB was pleased to welcome back an old member station, KVOH in Simi Valley, California, which has

been off the air for some time has recently been transferred to the Strategic Communications Group headed by Rev. John Tayloe. Tayloe's father-in-law was George Otis, who originally founded the station as part of the Voice of Hope network which included stations in the Middle East. The new owners are refurbishing the station's shortwave transmitter and they hope to have it back on the air within the next 90 days or so with programs in English and Spanish. The antenna is beamed from southern California toward Mexico and Cuba.

On May 17, the NASB annual meeting took place at the transmitter site of WEWN on a rural mountaintop about 40 minutes' drive from Irondale. Once delegates reached the top of the mountain, they were treated to some spectacular views of the surrounding Alabama mountains and the nine large antennas that WEWN uses to reach the Americas, Europe, Africa and other parts of the world. Inside the transmitter building are four 500 kW Continental transmitters which beam 24hrs per day of programming in English and Spanish.

WEWN originally broadcast programs in 22 languages, and when it first went on the air, some of its super-power transmissions - particularly on the higher frequencies - made their way into the homes of local residents. As Glen Tapley explained, "We had calls from people who were hearing voices in Chinese coming from their knives and forks!" Station personnel visited peoples' homes to install filters, and some of the highest frequencies were avoided in an attempt to cause less local interference.

About 11 employees operate the WEWN transmitter site, managed by Terry Borders. ... After lunch, Jerry Plummer of WWCR explained why it is still difficult to find in-band HF frequencies, even with some of the large European broadcasters leaving long-used channels.

(May edition of the NASB newsletter - National Association of SW Broadcasters, May 22)

U.S.A. [non] - Updated A-13 schedule of WYFR Family Radio:

1100-1200	6220	HUW	100 kW	265 deg	to SEAs	Burmese	- Hu Wei
1100-1200	11520	BAJ	100 kW	180 deg	to SEAs	Tagalog	- Bau Jong
1100-1300	6240	BAJ	100 kW	310 deg	to EAs	Chinese	- Bau Jong
1100-1300	9280	PAO	100 kW	335 deg	to EAs	Chinese	-
1300-1400	7580	TAI	100 kW	250 deg	to SEAs	Vietnamese.	Taipei site
2230-0300	6115	YFR	100 kW	355 deg	to NAm	English	

Cancelled broadcasts from June 2 and deleted from HFCC database:

2200-2245	17575	YFR	100 kW	140 deg	to SAm	Portuguese
2300-0045	13695	YFR	100 kW	160 deg	to SAm	Spanish
2300-0100	11565	YFR	100 kW	140 deg	to SAm	Portuguese
0000-0145	5945	YFR	100 kW	181 deg	to SAm	Spanish
0100-0145	15440	YFR	100 kW	285 deg	to CAm	Spanish
0100-0200	11825	YFR	100 kW	160 deg	to SAm	Spanish
0200-0400	6875	YFR	100 kW	285 deg	to CAm	Spanish
0200-0400	9930	YFR	100 kW	222 deg	to CARB	Spanish

And summer A-13 of Radio Taiwan International via Okeechobee:

2200-2300	15440	YFR	100 kW	285 deg	to CAm	English
2300-2400	9690	YFR	100 kW	222 deg	to CARB	Spanish
2300-2400	15440	YFR	100 kW	285 deg	to CAm	Chinese
0000-0100	15440	YFR	100 kW	285 deg	to CAm	Cantonese/Hakka
0100-0200	11565	YFR	100 kW	140 deg	to SAm	Spanish
0300-0400	6115	YFR	100 kW	355 deg	to NAm	English

(DX MIX News, Ivo Ivanov-BUL, via wwdxc BC-DX TopNews May 28)

Last evening I was informed by the FSI Board of Directors that June 30, 2013 will be the last day of transmissions for WYFR. I thought you would want to know that. ... (Dan Elyea, Okeechobee, June 13, via George Thurman, DXLD)

Frequency changes of IBB:

Radio Ashna

0130-0230 15090 TH 250 kW / 300 deg WAs Dari, ex 9335

Radio Farda

0830-1100 7435 KWT 250 kW / 058 deg WAs Persian, additional

Radio Liberty

0300-0500 11965 Lam 100 kW / 055 deg EEU Russian, ex 6120

1200-1400 15285 Lam 100 kW / 077 deg EEU Russian, ex 12025

Voice of America

0330-0400 7325 STP 100 kW / 100 deg SAf Kinyarwanda, ex 0330-0430
 0330-0400 7340 BOT 100 kW / 010 deg SAf Kinyarwanda, ex 0330-0430
 0330-0400 11905 STP 100 kW / 100 deg SAf Kinyarwanda, ex 0330-0430
 0400-0430 7325 STP 100 kW / 100 deg SAf Kinyarwanda Sa/Su,x Daily
 0400-0430 7340 BOT 100 kW / 010 deg SAf Kinyarwanda Sa/Su,x Daily
 0330-0430 11905 STP 100 kW / 100 deg SAf Kinyarwanda Sa/Su,x Daily
 1500-1530 15100 KWT 250 kW / 046 deg CAs Uzbek Tue/Sa, ex Daily
 1500-1530 15120 KWT 250 kW / 046 deg CAs Uzbek Su, ex 15100
 1500-1530 15140 KWT 250 kW / 046 deg CAs Uzbek Mo, ex 15100
 1500-1530 15255 KWT 250 kW / 046 deg CAs Uzbek Wed, ex 15100
 1500-1530 15285 KWT 250 kW / 046 deg CAs Uzbek Thu, ex 15100
 1500-1530 15290 KWT 250 kW / 046 deg CAs Uzbek Fr, ex 15100
 1630-1700 11835 STP 100 kW / 100 deg CAF Swahili, ex 11760
 1830-1900 11865 STP 100 kW / 100 deg SAf Kinyarwanda new from June 3
 1830-1900 13660 BOT 100 kW / 010 deg SAf Kinyarwanda new from June 3
 (DX MIX NEWS #784 from Georgi Bancov and Ivo Ivanov, June 04, 2013)

Editor's info desk was closed for this edition on June 15th, 2013, at 15:00 UTC.

Please also see our website for lists of broadcasts in German and English, updated regularly.

Sources & Contributors:

A-DX - e-mail exchange - Austria.

Alokesh Gupta - New Delhi - India.

BCDX - News Bulletin by Wolfgang W. Bueschel (wb) - Stuttgart - Germany.

CONEXION - CONEXION Digital - Buenos Aires - Argentina.

DXLD - Glenn Hauser's DX LISTENING DIGEST - USA.

Dr. Hans-Jörg Biener (hjb) - Nuremberg, Germany.

DX MIX NEWS = DX RE MIX NEWS - from Georgi Bancov & Ivo Ivanov, Bulgaria.

Others as stated in contribution.

Any items from Glenn Hauser, DX LISTENING DIGEST, and/or World of Radio may be reproduced or broadcast only if full credit be maintained at all stages, from the original source through DXLD, and publications quoting are made available to gh in exchange.

Items from this file may be reproduced or re-reproduced only if full credit is maintained at all stages.

Abbreviations:

with name of station:

BC / bc = Broadcaster, Int. = International, R = Radio, tx = Transmitter, Vo = Voice of, QRG = frequency

Location of transmitters with frequency:

Al = Aligarh/India, ALB = Albania, ANT = Neth. Antilles, Arm = Armavir/RUS, Ban = Bangalore, Be = Beijing/China, Bib = Biblis/DL, BIH = Bosnia-Herzegovina, BLR = Byelorussia, BOT = Botswana, Br = Brandon/Aus, CAN = Sackville/Canada, CHN = China, CLN-Ira = Sri Lanka Iranawila, CLN-Trm = Sri Lanka Trincomalee, CTR = Costa Rica, CYP = Cyprus, Du = Dushanbe/TJK, Dw = Darwin/Aus, ERV = Yerevan/Armenia, F = Issoudun/France, FIN = Finland, Fl = Florida/USA, GAB = Gabun, GUF = French Guyana, HAB = Habana/Cuba, Ho = Hohhot/CHN, HRI = WHRI Cypress Creek/USA, IK = (IRK) Irkutsk/Siberia, Jin = Jinhua, Kash = Kashgar/CHN, Ka = Kingsway (Delhi), Kh = Khampur (Delhi), Kom = Koms-na-Amur, KOR = (South) Korea, Kra = Krasnodar, Ku = Kununurra/Aus, Kun = Kunming /CHN, KWT = Kuwait, Lam = Lampertheim/DL, M = Moscow (Taldom), MCO = Monaco, MDA = Moldavia, MDG =

Madagascar, MNG = Mongolia, MRA = Northern Marianas, N = Nauen/DL, Nn = Nanning/CHN, NOR = Kvitsoy /Norway, Pan = Panaji/India, Pet = Petropavlovsk/Sibiria, RRW = Rwanda, RSA = Meyerton/South Africa, RUS = Russia incl. Sibiria, SAI = Saipan (MRA), Sam = Samara, SEY = Seychelles, Sh = Shepparton/Aus, Sk = Skelton/GB, SNG = Singapur, STP = Sao Tomé, SWZ = Swaziland, TH = (NAK) Nakhon Sawan/Thailand, TIN = Tinian (MRA), TJK = Tajikistan, TWN = Taiwan, UAE = Al Dubbaya /United Arab Emirates, Ur = Urumchi/CHN, Vla = Vladivostok, W = Wertachtal/Germany, Wof = Woofferton /GB, Xi = Xian/CHN, Ya = Yamata/Japan.

Mostly within round brackets target areas as known:

Af = Africa, Am = America, As = Asien, Aus = Australien, Eu = Europe, ME = Middle East, Pac = Pacific Region; C = Central, E = East, N = North, S = South, W = West

Languages:

Ar Arabic - Ch Chinese - Du Dutch - E, En English - F French - G, Ge German - Gr Greek - I Italian - J Japanese - K Korean - P Portuguese - R Russian - Sp Spanish - Turk Turkish

Technical hint with frequency (QRG):

(*) = Digital Radio broadcast (DRM) v = variable irr = irregular
/USB = upper sideband, /LSB = lower sideband, alt.: (QRG) = alternative frequency

Editor:

Walter Eibl (we), P.O. Box 1545, 91005 Erlangen, Germany.

E-Mail: <we@wwdxc.de> or <we@kwrs.de>

Used equipment:

Receiver: Communications receiver ICOM IC-R70 (no modification)

Antenna: Hamtronic HT504 selective active antenna, in roof window ca. 15 m above ground

Location: Herzogenaurach / Germany; 49.567/10.917; 310 m NN



DX LOGBOOK

Logs around the clock

by Ashok Kumar Bose, Unit # 28, 7035, Rexwood Road, Mississauga, ON, L4T 4M6, Canada
E-Mail: logbook@wwdxc.de

MEDIUMWAVE BAND

Frequency	UTC	SIO	ITU	Radio Station	Language	Programme Details	Date	Rep.
5830.0	0400	553	USA	WTWW	English	World of Radio # 1670	2605	RL
5995.0	2300	111	MLI	ORTM	French	News	0805	MF
6055.0	0520	121	RRW	Radio Rwanda	English	Border Heros	0106	MF
6090.0	0850	211	NIG	FRCN	English	Mercenary wars	1905	MF
6100.0	0600	111	LIB	Radio Liberia	English	Program	0106	MF
6110.0	1700	221	AZE	Radio Azerbaijan	English	European Song Contest	1905	MF
6140.0	1135	111	BDI	Voice of Burundi	English	Animal World in danger	0106	MF
6175.0	2350	111	TCH	R. Chad	Arabic	Sahara News	0805	MF

7195.0	0505	111	UGA	Radio Uganda	English	Freedom Fighters	0106	MF
7217.0	2120	211	AGL	RN Angola	English	Sex Tourism	0106	MF
7245.0	0915	211	TJK	Voice of Tajik	English	Westbank	0906	MF
7270.0	0900	121	KEN	Voice of Kenya	English	Animal Protection	0906	MF
7295.0	0250	111	MLA	TRAXX	English	Philipinas Air Force Show	0205	MF
9515.0	1600	211	KOR	KBS World	English	Electronic era in Korea	0906	MF
9560.0	1610	211	ETH	Voice of Ethiopia	English	Program	0906	MF
9655.0	1520	333	MRA	KFBS	English	Strong God	0906	MF
9700.0	1131	453	NZL	Radio New Zealand Intl.	English	Mailbox	2705	RL
9705.0	2240	222	NGR	LV Sahel	Vernacular	Songs	0805	MF
9750.0	0340	111	MLA	TRAXX	English	Program	1006	
9770.0	0330	111	CLN	SLBC	English	Program	1006	MF
9790.0	0550	211	CUB	CRI	English	US market for products	1006	MF
11520.0	0401	553	USA	WEWN	English	Encore, Journey home	2705	RL
11695.0	1400	121	UZB	Radio Uzbekistan	English	Railway Stations	0906	MF
11725.0	0737	553	NZL	Radio New Zealand Intl.	English	Dateline Pacific,Mailbox	2705	RL
11735.0	1720	111	TZA	Radio Tanzania	English	Wildlife Policy	0106	MF
11740.0	0400	111	USA	WYFR	English	Word of God is true	1006	MF
12085.0	1040	111	MNG	Voice of Mongolia	English	Ethopia war	1905	MF
15120.0	1540	333	NIG	Voice of Nigeria	English	Tourism in Africa	0906	MF
15140.0	1430	111	OMA	Radio Oman	English	China Sheriff of Asia	0906	MF
15190.0	1420	211	GNE	Radio Africa	English	Warlord of Africa	0906	MF
15190.0	1745	111	PHL	Radio Philipinas	English	Manila Traffic lights	0106	MF
15200.0	1500	111	GUM	KSDA	English	Human Rights	0906	MF
15295.0	0515	111	MLA	Voice of malaysia	English	United Church	0106	MF
15340.0	1510	211	AUS	HCJB	German	ADDX	0906	MF
15345.0	1820	111	ARG	RAE,Buenos Aires	English	Police	3105	MF
15610.0	1530	111	USA	WEWN	English	God is our nation	0906	MF
15720.0	0331	553	NZL	Radio New Zealand Intl.	English	Mailbox	2805	RL
175700	0810	322	IRN	Voice of Iran	German	Imam Khomeni	0906	MF
17700.0	0910	211	PAK	Radio Pakistan	English	Afghan Refugees	0906	MF
17895.0	0610	111	ZMB	CVC	English	African Missionaries	0906	MF
21670.0	1450	111	USA	WHRI	English	Program	0906	MF
21725.0	0610	111	AUS	Radio Australia	English	Firefighters	0606	MF

Here are the loggings from Richard A. D'Angelo of Wyomissing, Pennsylvania, USA:

- 5910.0 FRANCE. Radio Japan – Issoudun, 0255-0306 May 8, woman announcer with talk in Japanese followed by instrumental music and ID at 0259. Time pips at 0300, another ID and news as Japanese program continued. Good.
- 6134.7 BOLIVIA. Radio Santa Cruz, 0007-0054 May 27, program of continuous Latin music hosted by a female announcer with brief occasional Spanish announcements. Nice canned ID by male announcer at 0030 and again at 0036 before continuing with more Latin vocals. Fair signal.
- 7255.0 NIGERIA. Voice of Nigeria, 2237-2259* May 25, man announcer with talks in listed Hausa language with some short Afro pops selections. News at 2255 followed by ID and closedown with orchestra national anthem. Fair.
- 7280.0 GERMANY. Radio Farda – Nauen, 0127-0212 Jun 8, Farsi language program with vocal selections until time pips at 0130 followed by ID and news. More vocals after 0200. Fair.
- 7506.4 USA. WRNO Worldwide, 0302-0314 May 8, male vocals followed by ID "This is WRNO Worldwide broadcasting on 7505 kHz from its transmitter in New Orleans, Louisiana." Good signal.
- 9500.0 ENGLAND. BBC – Woofferton, 0240-0253 Jun 8, Farsi language program with a woman announcer providing ID at 0241 before returning to a man with long Farsi language talk. Fair to good.
- 9505.0 SUDAN. Voice of Sudan, 0403-0426 May 26, man announcer with news in Arabic language followed by local music program. Fair but rapidly deteriorating around 0420.

- 9579.1 MOROCCO (Spanish). Radio Medi Un, 0008-0058 Jun 8, woman announcer with French language talks hosting light music program. Poor at first but improving after 0030. Blocked from 0058 when China Radio International via Cuba opened a carrier on 9580.
- 9640.0 CHINA. China Radio International – Kashi, 2251-2300* May 31, series of vocals selections ending listed Spanish program. At 2300 there were 2+1 time pips followed by opening of Chinese language program until carrier was terminated 30 seconds into new program. Fair.
- 9655.0 MOLDOVA (Pridnestrovya). Radio PMR, 2346-0001* May 29, classical music program with a woman announcer giving ID and closedown at 2355 in Eastern European sounding language. Closing IS from 2356 when Radio Romania International's one hour English program commenced but for only one minute until technician cut the feed. Fair. Interesting mix up.
- 9740.0 ROMANIA. Radio Romania International – Tiganesta, 2338-2357* Jun 7, man announcer with Spanish talk hosting program of Romanian folk tunes. ID at 2356 followed by familiar IS. Fair. (D'Angelo-PA)
- 9850.0 ALBANIA. Radio Tirana, 2312-2339 May 7, program in Albania with local music, ID and talks. Fair to good.
- 9955.0 USA. WRMI – Miami, 0300-0400 Jun 2, with special broadcast from the Rhein-Main-Radio-Club in English and German discussing club activities alternating with musical selections. Poor to fair reception in noisy conditions.
- 11560.0 CLANDESTINE (Sudan). Radio Miraya – Sofia, 0422-0437 Jun 8, woman announcer asking questions of a man about agriculture, Minister of Finance, universities and spending bill, all in English until program previews at 0428, several IDs, jingles followed by Arabic at 0430. Next night noted with English opening at 0415. Fair.
- 11600.0 LIBYA. Radio Libya, 1908-1950 Jun 1, Arabic language broadcast with mainly talks although some music. Seemed to be extensive group discussion with one man in the studio and several from remote locations. Poor.
- 11730.0 BELARUS. Radio Belarus, 2146-2300* May 7, man announcer with talks in English hosting a music program. Music fanfare at 2200 followed by ID and news with a woman announcer. Closedown at 2256 with rap song until carrier terminated. Poor to fair.
- 11735.0 ZANZIBAR. ZBC (presumed), 2049-2059* May 12, local music program hosted by a man announcer with talk in presumed Swahili. Off with short instrumental music before carrier cut. No sign off announcement. Poor to fair.
- 11800.0 RWANDA. Radio Deutsche Welle – Kigali, man with news in English with ID followed by news features at 2105. Fair.
- 11815.0 BRAZIL. Radio Brasil Central, 0431-0452 Jun 1, man announcer with Portuguese talks, ID, etc. hosting pop music program with jingle IDs. Poor to fair.
- 11865.0 RWANDA. Radio Deutsche Welle – Kigali, 2101-2118 May 26, man announcer with news in English service. Several IDs followed by Inside Europe with features about Swiss Banking Secrecy and Gay Marriages in France. Fair with //12070 fair to good.
- 11955.0 AUSTRIA. Adventist World Radio – Moosbrunn, 2126-2129* May 5, caught woman announce in English closing transmission followed by instrumental music until carrier terminated. Fair.
- 15300.0 ROMANIA. Radio Romania International – Tiganesti, 2122-2145 May 26, woman announcer hosting Spanish language program with Romanian folk tunes. Good signal, best on the band.
- 15575.0 KOREA (South). KBS World Radio, 1334-1341 May 26, pop music features hosted by a woman announcer with short English talks. Poor.
- 15580.0 BOTSWANA. Voice of America – Moepeng Hill, 2046-2103 May 26, woman announcer in English hosting music program. ID at 2100 followed by news. Poor to fair in noisy conditions but re-tuned at 2145 and signal improved to fair to good with much less noise.
- 15630.0 GREECE. Voice of Greece – Avlis, 2146-2250 May 26, man and woman with Greek language talk hosting program of Greek music. ID at 2200 followed by more Greek music. Fair.

Thanks a lot to our club members for your contributions:

MF : Michael Frese, Osnabrueck, Germany. Grundig Yatchboy with telescopic aerial.

PH : Paul Hayes, Limerick, Ireland. ICOM RC 75, Wellbrook 200p , Satellit 450, SONY ICF 7600GR with long wire.

RAD : Richard A. D'Angelo, Wyomissing, PA, USA. Ten-Tec RX-340, Drake R-8B, Eton E1, Lowe HF-150 with Alpha Delta DX Sloper, Datong FL3.

RL : Richard Lemke, St. Albert, Alberta, Canada. JRC NRD-535 HF with random long wires.

Dear Friends,

We have a shorter edition of Logbook this month.

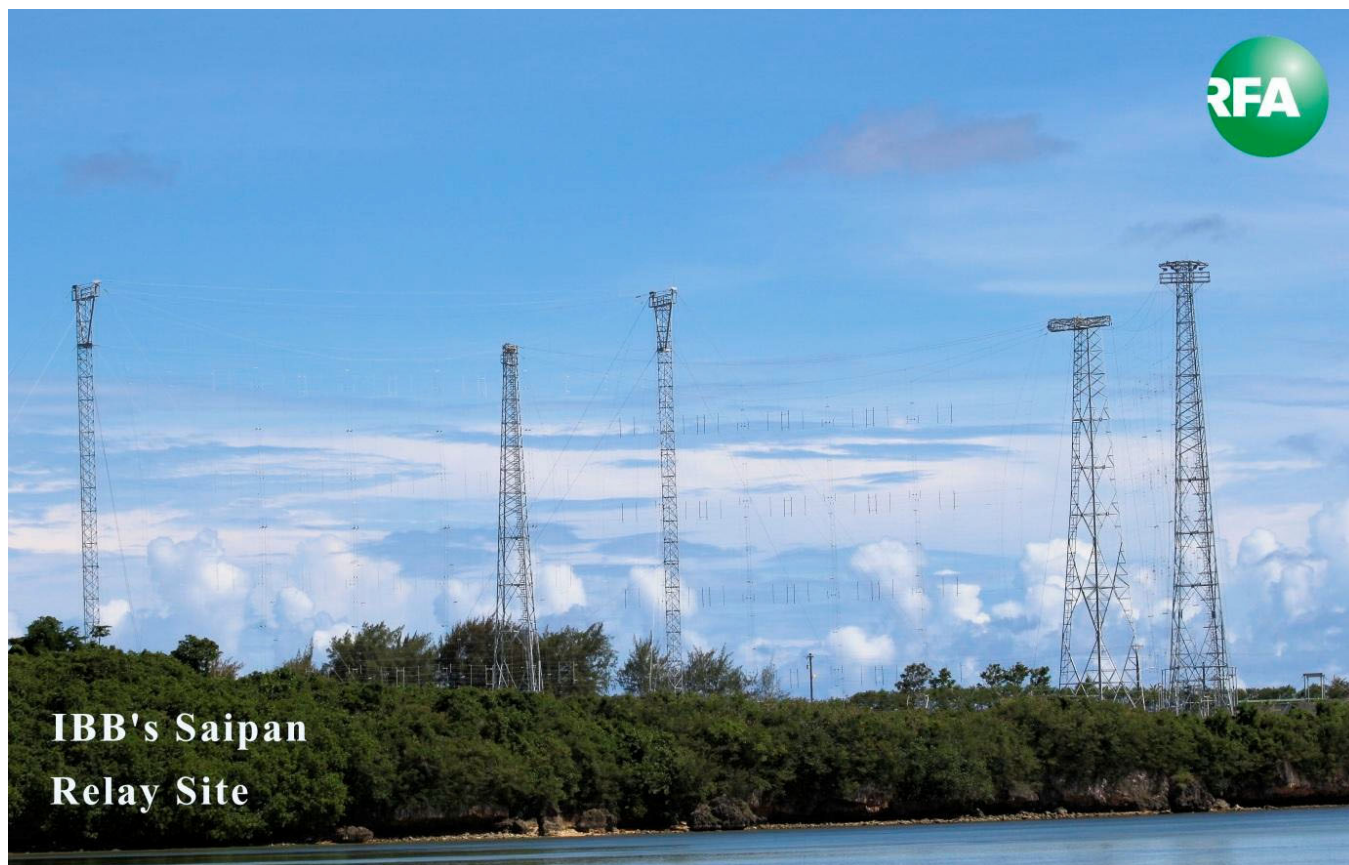
Thanks to all our members for the loggings

Till next time,

Ashok Kumar Bose

RADIO FREE ASIA ANNOUNCES IBB SAIPAN QSL CARD

Radio Free Asia (RFA) announces the release of the second QSL card in the series highlighting the International Broadcasting Bureau (IBB) transmitter sites used for RFA programming. RFA programs are broadcasts from the following IBB sites: Biblis, Iranawilla, Kuwait, Lampertheim, Saipan and Tinian. The 7.4 acre **Saipan site** has three curtain antennas with main beam bore sights of 195, 270 and 340 degrees. These antennas can be electronically slewed horizontally. IBB Saipan is equipped with 3 high-power shortwave transmitters that carry RFA's programming to China, Korea, Southeast Asia and Tibet. **This is RFA's 50th QSL overall and will be used to confirm all valid RFA reception reports from May 1, 2013 to August 31, 2013.**



Radio Free Asia (RFA) is a private, nonprofit corporation that broadcasts news and information to listeners in Asian countries where full, accurate, and timely news reports are unavailable. Created by US-Congress in 1994 and incorporated in 1996, RFA currently broadcasts in Burmese, Cantonese, Khmer, Korean to North Korea, Lao, Mandarin, the Wu dialect, Vietnamese, Tibetan (Uke, Amdo, and Kham), and Uyghur. RFA strives for accuracy, balance and fairness in its editorial content. As a 'surrogate' broadcaster, RFA provides news and commentary specific to each of its target countries, acting as the free press these countries lack. RFA broadcasts only in local languages and dialects, and most of its broadcasts comprise news of specific local interest. More information about Radio Free Asia, including our current broadcast frequency schedule, is available at <<http://www.rfa.org>>. RFA encourages listeners to submit reception reports. Reception reports are valuable to RFA as they help us evaluate the signal strength and quality of our transmissions. RFA confirms all accurate reception reports by mailing a QSL card to the listener. RFA welcomes all reception report submissions at RFA-website <<http://www.techweb.rfa.org>> (follow the QSL REPORTS link) not only from DX'ers, but also from its general listening audience in target areas. Reception reports are also accepted by email at <qsl@rfa.org>, and for anyone without Internet access, reception reports can be mailed to our postal address.

Reception Reports
Radio Free Asia
2025 M. Street NW, Suite 300
Washington DC 20036
United States of America.

Upon request, RFA will also send a copy of the current broadcast schedule and a station sticker.

RFA's AJ via Siegbert Gerhard, Frankfurt am Main