

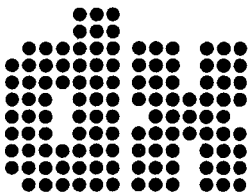
11 - 2017 € 1,50

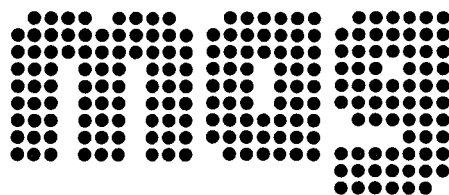
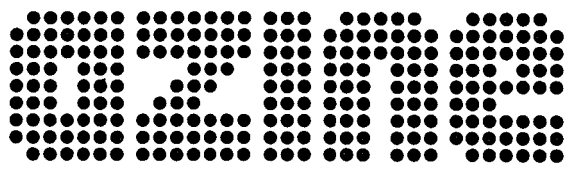


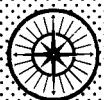
ISSN 0175-6877



9 770175 687009





WORLD WIDE DX CLUB



Staff of WORLDWIDE DX CLUB:

- PRESIDENT AND CHIEF EDITOR** . . . ✉ WWDXC Headquarters, Michael Bethge, Postfach 12 14, D-61282 Bad Homburg, Germany ● E-Mail: mail@wwdxc.de
☎ +49-6172-123118 ● 📠 +49-6172-123117
- BROADCASTING NEWS EDITOR** . . . ✉ Walter Eibl, Postfach 15 45, D-91005 Erlangen, Germany
E-Mail: news@wwdxc.de
- LOGBOOK EDITOR** ✉ Ashok Kumar Bose, 106 Aspermont Crescent, Brampton, Ontario, L6P 3Z3, Canada ● E-Mail: logbook@wwdxc.de
- QSL CORNER EDITOR** ✉ Dario Gabrielli, Viale della Resistenza 33b, I-30031 Dolo (Ve), Italy
E-Mail: qsl@wwdxc.de
- TOP NEWS EDITOR (Internet)** ✉ Wolfgang Büschel, Hoffeld, Sprollstrasse 87, D-70597 Stuttgart, Germany ● E-Mail: topnews@wwdxc.de
- TREASURER & SECRETARY** ✉ Karin Bethge, Urseler Strasse 18, D-61348 Bad Homburg, Germany
- NEWCOMER SERVICE OF AGDX** . . ✉ Hobby-Beratung, c/o AGDX, Postfach 12 14, D-61282 Bad Homburg, Germany (please enclose return postage)

Each of the editors mentioned above is self-responsible for the contents of his composed column. Furthermore, we cannot be responsible for the contents of advertisements published in DX MAGAZINE.

We have no fixed deadlines. Contributions may be sent either to WWDXC Headquarters or directly to our editors at any time. If you send your contributions to WWDXC Headquarters, please do not forget to write all contributions for the different sections on separate sheets of paper, so that we are able to distribute them to the competent section editors.

- WORLDWIDE DX CLUB homepage in the Internet: <<http://www.wwdxc.de>>
- Weekly "TopNews" by Wolfgang Büschel: <<http://topnews.wwdxc.de>> (available free of charge by eMail to our members on request)
- Archive copies of DX MAGAZINE (PDF) since the year 2000: <<http://online.wwdxc.de>>

WORLD RADIO TV HANDBOOK 2018

Prices for orders from WORLDWIDE DX CLUB ■ Preise bei Bestellung beim WORLDWIDE DX CLUB:

Pre-publication price: €39.00 until November 30th, 2017 - afterwards €42.00, including postage and packing inside Europe.

Delivery against advance payment by International Money Order, cheque in € drawn on a German bank (otherwise please add € 5.00 for bank charges), cheque in US\$ drawn on a US bank, cash in any convertible currency, Postal Money Order or transfer to our bank accounts: Raiffeisenbank Graevenwiesbach (IBAN: DE75 5006 9345 0100 0199 84 - BIC/SWIFT-Code: GENODE51GWB) or ING/Netherlands (IBAN: NL08 INGB 0003 8228 40 - BIC/SWIFT-Code: INGBNL2A).

Der obige Preis enthält Porto und Verpackung. Lieferung gegen Vorauszahlung durch Überweisung, Scheck in € (gezogen auf eine deutsche Bank, sonst € 5,00 zusätzlich für Bankgebühren), Postanweisung oder Bargeld. Konten: Raiffeisenbank Grävenwiesbach (IBAN: DE75 5006 9345 0100 0199 84 - BIC/SWIFT-Code: GENODE51GWB) und ING/Niederlande (IBAN: NL08 INGB 0003 8228 40 - BIC/SWIFT-Code: INGBNL2A).

DX MAGAZINE is the monthly publication of WORLDWIDE DX CLUB, Postfach 12 14, D-61282 Bad Homburg, Germany. Price for a single copy: € 1.50 or 2 International Reply Coupons (IRC's); annual subscription rate: € 18.00. Other currencies and air mail rates on request. Cover: Peter Pohle + Jürgen Kauer (KAVOP)



DX MAGAZINE No. 11



Vol. LII



November 2017

Hello again,

Welcome to another issue of our DX MAGAZINE. Please remember to order the new **WORLD RADIO TV HANDBOOK 2018** as soon as possible, since it is scheduled to be available here in Europe in the beginning or middle of December, as reported in our last DX MAGAZINE. More information on this year's edition can be found on our web page: <<http://www.wwdxc.de/archive/wrth2018.pdf>>.

Bitte denken Sie daran, daß das neue **WORLD RADIO TV HANDBOOK 2018** auch in diesem Jahr wieder Anfang/Mitte Dezember erscheinen wird (s. DX MAGAZINE 10). Ihre Bestellung sollte daher möglichst Ende November bei uns vorliegen, wenn Sie bei der ersten Auslieferung dabei sein wollen.

Klingenfuss Publications have informed us that they are now working on their new products

- 2018 Shortwave Frequency Guide
- 2018 Super Frequency List on CD
- 2018 Frequency Database for the Perseus LF-HF Software-Defined Receiver
- Supplement January 2018 to the 2017/2018 Guide to Utility Radio Stations to be published on 10 December 2017.

Full information on these products can be found at: <<http://www.klingenfuss.org>> and full-resolution title page graphics can be found at:

<http://www.klingenfuss.org/r_2018.jpg> and <http://www.klingenfuss.org/r_2018.pdf>
<http://www.klingenfuss.org/s_2018.gif> and <http://www.klingenfuss.org/s_2018.pdf>

Our article "Shortwave Reception via Web-SDR", as far as HF utility radio stations are concerned, is available at <<http://www.klingenfuss.org/websdr.pdf>>. This fascinating technique with brandnew sample screenshots of professional digital data stations worldwide is perfectly integrated in the new 2018 editions of our products. More than 200 free receivers worldwide are currently linked e.g. on sdr.hu!

The printed Supplement, with 400+ new frequencies and stations monitored throughout 2017, will be attached free to all copies of the 2017/2018 Guide to Utility Radio Stations sold after 1 January 2018. Those customers that did acquire the 2017/2018 Guide to Utility Radio Stations before that date may download the pertinent .PDF file free from our website, after 1 January 2018.

(Jörg Klingenfuss <info@klingenfuss.org>)



Wie wir von Michael Schmitz erfahren, wird es keine neue Ausgabe von "Sender & Frequenzen 2018" mehr geben, sondern das Buch wurde mit der Ausgabe 2017 eingestellt. Falls Sie die letzte Ausgabe 2017 noch bestellen möchten, finden Sie ein Bestellformular unter: <<http://www.addx-verlag.de/bestellung.php>>. Jedem bestellten Buch wird ein historischer ADDX-Jahrgangswimpel beigelegt.

Ein Nachtrag von 47 Seiten mit den Sommer-Sendeplänen 2017 kann bei <<https://www.vth.de/media/files/blog/nachtragsenderfre/nt-1-2017.pdf>> kostenlos heruntergeladen werden.

Zum 25. Jahrestag der Gründung des Radio Tirana Hörerklubs laden wir alle Hörerinnen und Hörer von Radio Tirana sowie alle interessierten Hobbyfreunde ein an unserem Jubiläumskontest teilzunehmen. Dazu bitten wir um Empfangsbeobachtungen des deutschen Programmes von Radio Tirana über die Anlagen des Shortwaveservice in Kall (die Direktsendungen aus Albanien wurden ja bereits vor mehreren Monaten eingestellt) sowie um die Beantwortung einiger Fragen zu den Programminhalten. Ein kleines Quiz

zum Land Albanien rundet den Wettbewerb ab.

Kontestzeitraum ist vom 18.12.2017 bis 13.01.2018. Die Kontestunterlagen können ab Anfang Dezember auf der Homepage des Hörerklubs (<<http://rthk.agdx.de>>) zum Ausdruck heruntergeladen werden. Postalisch können sie angefordert werden bei Werner Schubert, Poststr. 8/Rgb., 85567 Grafing, Deutschland. Rückporto ist gerne gesehen, aber nicht zwingend erforderlich.

Alle Teilnehmer erhalten ein Diplom, eine Sonder-QSL-Karte und ein kleines Dankeschön in Form einer Auswahl albanischer Briefmarken. Unter den Teilnehmern des Quiz verlosen wir zudem einige attraktive Sachpreise aus und über Albanien.

Der Hörerklub freut sich auf Ihre Teilnahme!

(Werner Schubert, RTHK-Klubleiter)

The **A.I.R. Contest 2018 "Attilio Leoni"**, the annual Italian DX contest by Associazione Italiana Radioascolto, will take place from January 2nd to 9th, 2018. For full information, please write to: Bruno Pecolatto, AIR Contest Manager, Fermo Posta, I-10080 Ronco Canavese (TO), Italy, E-mail: <bpecolatto@libero.it>.

And with this best wishes and good DX until next month from



NEWS ABOUT BROADCASTING (+other) STATIONS

Editor: WALTER EIBL ■ eMail: news@wwdxc.de

Liebe Freunde der Kurzwelle,

"Ehrlich gesagt: ganz geheuer ist mir dieses Projekt nicht. "

"Wenn das Programm auch von solch hanebüchenen Unsinn strotzt, dann Gute Nacht, schöne Bäuerin."

"Kurzwellenrundfunk wird hier in Europa immer mehr zur Freakshow."

Mit diesen Kommentaren ging es los, vor 10 Jahren. Heute auf den Tag genau wurde die erste Frequenzzuteilung für den Sender in Kall-Krekel von der Bundesnetzagentur ausgestellt. Damals wie heute auf 6005 kHz. Was 2007 winzig in einem Verein begann ist heute ein kleines Unternehmen mit insgesamt 5 Sendern, die On Air sind. Ich danke allen, die den Sender in der Zeit unterstützt haben. Trotz aller Unkenrufe bin ich "a wenig" stolz, in Pionierarbeit die Kurzwelle in Deutschland mit einigen Mitstreitern ehemals auch für private Betreiber geöffnet zu haben.

Für den 25. November 2017 ist eine mehrstündige Sondersendung geplant. Wir würden uns über Eure Kommentare zu 10 Jahren Rundfunk aus Kall-Krekel oder Grußbotschaften sehr freuen. Per Facebook, Mail (<info@shortwaveservice.com>) oder per Telefon: +49 2251 146085, in Wort oder Textform. Frequenzen und Sendezeiten werden im Laufe des Monats mitgeteilt (Bish-jeck? Aus Bish-kek? Maybe...).

Dann überreiche ich auch Daniel Kähler das goldene Nudelholz für den ersten RR ever, der hier ankam (oder ich signiere in Optimalgelb oder Xanthisch seine Erstlings-QSL).

Gleichzeitig danke ich auch für mein 10-jähriges hier in der A-DX Liste (trotz massivem Sarkasmus immer noch nicht gesperrt) und insbesondere Dr. Remote-DX Christoph für seine unermüdliche Arbeit in dieser Anstalt des gepflegten Infoaustausches

.

Weitermachen!

Christian Milling

(5. November 2017)

ALASKA - Winter B-17 changes of WCB KNLS The New Life Station from Oct 29:

0800-0900 on 7355 NLS 100 kW / 285 deg to EAs Chinese tx#2 unchange
 0800-0900 NF 7370 NLS 100 kW / 270 deg to SEAs English tx#1, ex 9615
 0900-1000 on 7355 NLS 100 kW / 285 deg to EAs Chinese tx#2 unchange
 0900-1000 NF 7370 NLS 100 kW / 300 deg to NEAs Russian tx#1, ex 9680
 1000-1100 on 7355 NLS 100 kW / 285 deg to EAs Chinese tx#2 unchange
 1000-1100 NF 7370 NLS 100 kW / 270 deg to SEAs English tx#1, ex 9615
 1100-1200 on 7355 NLS 100 kW / 285 deg to EAs Chinese tx#2 unchange
 1100-1200 NF 7370 NLS 100 kW / 300 deg to NEAs Russian tx#1, ex 9680
 1200-1300 on 7355 NLS 100 kW / 270 deg to SEAs English tx#2 unchange
 1200-1300 NF 7370 NLS 100 kW / 270 deg to SEAs English tx#1, ex 9615
 1300-1400 NF 6155 NLS 100 kW / 300 deg to NEAs Chinese tx#2, ex 9655
 1300-1400 NF 7370 NLS 100 kW / 300 deg to NEAs Chinese tx#1, ex 9680
 1400-1500 NF 6155 NLS 100 kW / 300 deg to NEAs Chinese tx#2, ex 9655
 1400-1500 NF 7355 NLS 100 kW / 270 deg to SEAs English tx#1, ex 9615
 1500-1600 NF 6110 NLS 100 kW / 300 deg to NEAs Chinese tx#2, ex 9655
 1500-1600 NF 6155 NLS 100 kW / 300 deg to NEAs Russian tx#1, ex 9680
 1600-1700 NF 7355 NLS 100 kW / 300 deg to NEAs Chinese tx#2, ex 9655
 1600-1700 NF 7370 NLS 100 kW / 315 deg to NEAs Russian tx#1, ex 6190
 1700-1800 NF 7355 NLS 100 kW / 300 deg to NEAs Chinese tx#2, ex 9655
 1700-1800 NF 7370 NLS 100 kW / 315 deg to NEAs Russian tx#1, ex 6190
 (via DXLD)

ANGUILLA - 6090 kHz, Oct 31 at 2343 UT, whee! DGS is back from The Valley, with VG S=9+30dB signal and modulation. Had been off for weeks since hurricane, except for a very brief reactivation a few days later when it seemed to be OK then. At 0154 UT Nov 1 check, // 5935 kHz WWCR and synchronized, taking the same satellite feed from LA.

Day frequency 11775 kHz may be back too. It was reported that the antenna needed repairing, while the MW 1610 tower was completely down, and still unheard there. (gh, hcdx and dxld Nov 1)

11775.0025 exact fq measured at 1340 UT on Nov 1st, daytime schedule 10-22 UT daily. S=9 signal in remote SDR server at MI-US. [selected SDR options, span 12.5 kHz RBW 15.3 Hertz]
 (wb, wwdxc BC-DX TopNews Nov 1)

ARMENIA - Good signal of Trans World Radio India on Oct. 30:

1300-1315 on 9745 ERV 300 kW / 100 deg to SAs English Mo-Sa
 1430-1445 on 9745 ERV 300 kW / 100 deg to SAs English Sa
 1435-1450 on 9745 ERV 300 kW / 100 deg to SAs English Mo-Fr
 Wrong frequency announcement A-17 9410 kHz, instead of 9745 kHz
 (DX MIX 1039)

AUSTRALIA - Good signal of Reach Beyond Australia in English, Oct. 30:

1245-1300 on 11865 KNX 100 kW / 320 deg to SAs English Daily
 1315-1330 on 11865 KNX 100 kW / 320 deg to SAs English Mo/We/Fr
 (DX MIX 1039)

New B-17 schedule of Reach Beyond Australia in English:

1115-1130 on 15575 KNX 100 kW / 315 deg SEAs English Mo-Wed/Fr
 1145-1200 on 11915 KNX 100 kW / 310 deg SEAs English Sa/Su
 1200-1245 on 11865 KNX 100 kW / 320 deg SEAs English Fr
 1245-1300 on 11865 KNX 100 kW / 320 deg SAs English Daily
 1300-1330 on 9610 KNX 100 kW / 305 deg SAs English Su
 1315-1330 on 11865 KNX 100 kW / 320 deg SAs English Mo/Wed/Fr
 1445-1500 on 11900 KNX 100 kW / 320 deg SAs English or Himachali Wed
 2115-2130 on 9620 KNX 100 kW / 350 deg EAs English Sa/Su/Tue-Thu
 2230-2245 on 15400 KNX 075 kW / 005 deg EAs English Mo-Fr
 0000-0015 on 15400 KNX 100 kW / 350 deg EAs English Wed/Fr

B-16 and A-17 of Reach Beyond Australia in English was as follows:

1300-1400 on 9645 KNX 100 kW / 305 deg SAs English Daily B-16
 1405-1435 on 11980 KNX 100 kW / 305 deg SAs English Daily B-16

plus several 15 minutes broadcasts in different days of the week!!
 1300-1430 on 9720 KNX 100 kW / 305 deg SAs English Daily A-17
 plus several 15 minutes broadcasts in different days of the week!!
 (Ivo Ivanov, SWLDXBulgaria News, October 27)

AUSTRIA - Strong signal of Oesterreichischer Rundfunk on Nov. 2:
 0600-0720 on 6155 OE 300 kW / non-dir to WEu German Mo-Fr
 0600-0710 on 6155 OE 300 kW / non-dir to WEu German Sa/Su
 (DX MIX 1039)

CHINA - I've been monitoring 5965 for the past 2 days, I'm pretty certain it's CRI (in Korean?) starting at 1000 instead of 1400 per Aoki. At 1250 I'm listening to what sounds like Chinese language lessons, signal is improving as the sun comes up. (Chris KC5IIE Krug, FT-1000mp Mkv, 40m loop, 20-10 cobweb antenna, Tulsa, Oct 31? dxldyg via DXLD)

Powerhouse 500 kW from CRI Xian in Korean language:
 5965 0445 1015 41N JAM 50 0 0 700 Mu1 IND AIR AIR 3311
 5965 0900 1000 44NE,45N BEI 150 95 0 206 Chn CHN CRI RTC 1780
 5965 1000 1100 44NE,45N BEI 150 95 0 206 Chn CHN CRI RTC 1781
 5965 1100 1200 44NE,45N XIA 500 73 0 206 Kor CHN CRI RTC 1782
 5965 1200 1300 44NE,45N XIA 500 73 0 206 Kor CHN CRI RTC 1783
 5965 1300 1400 44NE,45N XIA 500 73 0 206 Kor CHN CRI RTC 1784
 5965 1400 1500 44NE,45NW XIA 500 73 0 206 Kor CHN CRI RTC 1785
 <<http://www1.s2.starcat.ne.jp/ndxc/cn/cnr17.htm>>
 (wb)

CHINA [and non] - Winter B-17 frequency changes of China Radio International from Oct 29: [compared to B-16, not A-17]:

(DX MIX NEWS # 1036 from Georgi Bancov and Ivo Ivanov, Oct.27, 2017 via DXLD)
 0000-0057 NF 7415 HUH 100 kW / 345 deg FERu Russian, ex 7405 B-16
 0000-0057 NF 7205 BEI 500 kW / 318 deg CAs Mongolian, ex 11875 B-16
 0200-0257 NF 11780 BEI 500 kW / 322 deg SAm Chinese, ex 15140 B-16
 0200-0257 NF 11980 XIA 500 kW / 292 deg EEu Russian, ex 17640 B-16
 0300-0357 NF 9695 KAS 100 kW / 209 deg SAs Hindi, ex 13720 B-16
 0600-0657 NF 13720 KAS 500 kW / 308 deg WEu Chinese, ex 17650 B-16
 1200-1257 NF 9520 URU 500 kW / 270 deg WAs Chinese, ex 15110 B-16
 1200-1257 NF 13720 KAS 500 kW / 308 deg WEu Chinese, ex 17650 B-16
 1300-1357 NF 9520 URU 500 kW / 270 deg SAs Chinese, ex 12015 B-16
 1300-1357 NF 13720 KAS 500 kW / 308 deg WEu French, ex 17650 B-16
 1400-1457 NF 5965 KAS 100 kW / 173 deg SAs Tamil, ex 9570 B-16
 1400-1457 NF 6100 URU 500 kW / 270 deg N/ME English, ex 11665 B-16
 1400-1457 NF 9520 URU 500 kW / 270 deg N/ME Chinese, ex 11610 B-16
 1500-1557 NF 6190 BEI 500 kW / 193 deg SEAs Vietnamese, ex 9550 B-16
 1500-1557 NF 7360 KAS 100 kW / 173 deg SAs Tamil, ex 9730 B-16
 2300-2357 NF 7415 HUH 100 kW / 345 deg CAs Russian, ex 7405 B-16
 2300-2357 NF 7430 NNN 100 kW / 200 deg SEAs Khmer, ex 7395 B-16
 2300-2357 NF 9630 JIN 500 kW / 161 deg SEAs Cantonese, ex 9425 B-16
 2300-2357 NF 9720 XIA 500 kW / 073 deg EAs Japanese, ex 9435 B-16
 (via DXLD)

The complete CRI schedule will follow in the next issue. (we)

COLOMBIA - 5910.356 Alcaravan S=7 or -83dBm signal in MI-US and Alb-CAN remote SDR's, at 0602 UT Oct 22. Nice Latin American dance mx program heard. But here in southern Germany suffers often by UTE QRM. 5910.9 to 5912.2 CW/RTTY on upper flank, main tones on 5911.4 and 5911.5 kHz. // CLM? but much less signal on 6010.033 kHz.

[selected SDR options, span 12.5 kHz RBW 15.3 Hertz] (wb, wwdxc BC-DX TopNews Oct 22)

CUBA - Full B-17 schedule of R. Habana Cuba as from Nov 12, 2017:

1200-1400 11670 BAU 100 340 WNAm Spanish
 1200-1400 13670 BEJ 50 135 SAm Spanish
 1200-1400 17580 BAU 100 160 SAm Spanish

1200-1400	17730	BAU	100	130	SAm	Spanish	
1200-1500	11950	BAU	100	010	ENAm	Spanish	
1200-1500	11840	QVC	250	305	WNA	Spanish	
1200-1600	9535	BEJ	100	230	CAm	Spanish	
1200-1600	11760	BAU	100	n-d	NCAm	Spanish	
1300-1500	11650	BEJ	50	110	Antilles	Spanish	
1300-1600	15230	QVC	250	160	SAm	Spanish	
1400-1500	17580	BAU	100	160	SAm	Spanish	
1400-1500	17730	BAU	100	130	SAm	Spanish	
1400-1600	15370	BAU	100	315	WNA	Spanish	
1500-1600	17730	BAU	100	130	SAm	Spanish	
1600-1630	11760	BAU	100	n-d	NCAm	Esperanto	Sun
1600-1900	11760	BAU	100	n-d	NCAm	Spanish	Mon-Sat
1900-1930	15140	BAU	100	340	WNA	Arabic	
1930-2000	15140	BAU	100	340	WNA	Creole	
2000-2100	15140	BAU	100	340	WNA	English	
2030-2100	15370	BAU	100	010	WEu	French	
2100-2130	15140	BAU	100	340	WNA	French	
2100-2130	15370	BAU	100	010	WEu	Portuguese	
2130-2200	15370	BAU	100	010	WEu	Arabic	
2200-0300	11760	BAU	100	n-d	NCAm	Spanish	
2200-0500	13740	BAU	100	160	SAm	Spanish	
2200-0600	9535	BEJ	100	230	CAm	Spanish	
2200-2300	15230	QVC	250	160	SAm	Portuguese	
2200-2400	5040	BAU	100	n-d	Cuba	Spanish	83 and 263 degrees CT2/1/0.8
2200-2400	9640	BEJ	50	110	Antilles	Spanish	
2200-2400	15370	BAU	100	010	WEu	Spanish	
2300-0600	11840	QVC	250	170	Chile	Spanish	
2300-0600	15230	QVC	250	160	SAm	Spanish	
2300-2330	9720	BAU	100	130	Af	French	
2330-2400	9720	BAU	100	130	Af	Portuguese	
2330-2400	15730	BEJ	50	135	SAm	Esperanto	Su only
2330-2400	15730	BEJ	50	135	SAm	French	Mo-Sa
0000-0030	15730	BEJ	50	135	SAm	Creole	
0000-0100	5040	BAU	100	n-d	Cuba	English	
0000-0100	6000	QVC	250	010	ENAm	Spanish	
0000-0100	9720	BAU	100	130	Af	English	
0000-0100	11950	BAU	100	340	WNA	Spanish, RHC9 "Mesa Redonda"	Lunes a Jueves, Mo-Thu only
0000-0500	9640	BEJ	50	110	Antilles	Spanish	
0000-0500	11670	BAU	100	130	SAm	Spanish	
0030-0100	15730	BEJ	50	135	SAm	Portuguese	
0100-0130	5040	BAU	100	n-d	Cuba	Creole	
0100-0130	15730	BEJ	50	135	SAm	Quechua	
0100-0600	6060	BAU	100	010	ENAm	Spanish	
0130-0200	5040	BAU	100	n-d	Cuba	Esperanto	Su only, irreg?
0130-0200	5040	BAU	100	n-d	Cuba	French	Mo-Sa
0200-0600	5040	BAU	100	n-d	Cuba	Spanish	
0200-0600	6000	QVC	250	010	ENAm	English	
0200-0800	6165	BAU	100	340	WNA	English	
0600-0700	5040	BAU	100	n-d	Cuba	English	
0600-0800	6000	QVC	250	010	ENAm	English	
0600-0800	6060	BAU	100	010	ENAm	English	
0600-0800	6100	BAU	100	310	WNA	English	
0800-0830	6100	BAU	100	310	WNA	Esperanto	Su only

Transmitter sites: BAU = Bauta BEJ = Bejuca1 QVC = Titan-Quivican San Felipe

Shortwave schedule of Radio Rebelde:

0000-2400 5025 BAU 050 / non-dir to CE&SAm Spanish

Shortwave schedule of Radio Progreso:

0130-0500 4765 BEJ 050 / non-dir to Cuba / Caribbean Spanish

(transformed acc B-17 xlsx Excel schedule by wb df5sx, wwdxc BC-DX TopNews Nov 6; thanks to Arnie Coro-CUB - CO2KK - RHC B-17 file Nov 12)

Indeed it shows intentional retiming of RHC La Habana English block from 01-07 to 02-08 UT, and it's already started. On 6000 kHz nd reactivated 6165 kHz thruout; adding 5040 kHz at 06-07 UT; and adding 6060 kHz, 6100 kHz at 06-08 UT. So no more English at 01-02 UT. As I've already logged, the 23-24 UT English has already shifted to 00-01 UT on 11880 kHz, but that will move to 9720 kHz. It's supposedly to Africa (well after midnight over there), at 130 degrees, // 5040 kHz ND. (gh, hcdx and dxld Oct 8)

7365even IBB BBG Radio Marti in Spanish to Cuba and CeAM, S=9+35dB powerhouse from Greenville-NC, and underneath some low level Cuban noise scratching signal, at 0112 UT on Nov 10.

Same time nearby RHC Spanish 7340 kHz not much strong from 50 kW Bejucal {former Radio Moscow USSR relay} site on backlobe of 110degr azimuth towards Antilles / Suriname on Venezuelan revolution economia social talk ... and rather poor signal of co-channel RRI Bucarest from Tiganesti bcast center underneath at 0122 UT.

[selected SDR options, span 12.5 kHz RBW 15.3 Hertz]

(wb df5sx, wwdxc BC-DX TopNews Nov 10)

Radio Havana Cuba, B-17 schedule, 12 Nov 2017:

Arabic

1900-1930 15140/NAm
2130-2200 15370/Eu

Creole

0000-0030 15730/SAm
0100-0130 5040/SAm
1930-2000 15140/NAm

English

0000-0100 5040/CAm 9720/Af
0200-0600 6000/NAm 6165/NAm
0600-0700 5040/CAm 6000/NAm 6060/NAm 6100/NAm 6165/NAm
0700-0800 6000/NAm 6060/NAm 6100/NAm 6165/NAm
2000-2100 15140/NAm

Esperanto - Su only

0130-0200 5040/CAm - probably -
0800-0830 6100/NAm
1600-1630 11760/CAm
2330-2400 15730/SAm

French

0130-0200 5040/CAm
2030-2100 15370/Eu
2100-2130 15140/NAm
2300-2330 9720Af
2330-2400 15730/SAm Mo-Sa only

Portuguese

2100-2130 15370/Eu
2200-2300 15230/SAm
2330-2400 9720/Af
0030-0100 15730/SAm

Quechua

0100-0130 15730/SAm

Spanish

0000-0100 11950/NAm RHC9 "Mesa Redonda", Lunes a Jueves, Mon-Thur only.
0000-0100 6000/NAm 9535/CAm 9640/SAm 11670/SAm 11760/CAm 11840/SAm 13740/SAm 15230/SAm
0100-0200 6060/NAm 9535/CAm 9640/SAm 11670/SAm 11760/CAm 11840/SAm 13740/SAm 15230/SAm
0200-0300 5040/CAm 6060/NAm 9535/CAm 9640/SAm 11670/SAm 11760/CAm 11840/SAm 13740/SAm 15230/SAm
0300-0400 5040/CAm 6060/NAm 9535/CAm 9640/SAm 11670/SAm 11840/SAm 13740/SAm 15230/SAm
0400-0500 5040/CAm 6060/NAm 9535/CAm 9640/SAm 11670/SAm 11840/SAm 13740/SAm 15230/SAm

0500-0600 5040/CAm 6060/NAm 9535/CAm 11840/SAm 15230/SAm

1200-1300 9535/CAm 11670/NAm 11760/CAm 11840/NAm 11950/NAm 13670/SAm 17580/SAm 17730/SAm
 1300-1400 9535/CAm 11650/SAm 11670/NAm 11760/CAm 11840/NAm 11950/NAm 13670/SAm 15230/SAm 17580/SAm 17730/SAm
 1400-1500 9535/CAm 11650/SAm 11760/CAm 11840/NAm 11950/NAm 15230/SAm 15370/NAm 17580/SAm 17730/SAm
 1500-1600 9535/CAm 11760/CAm 15230/SAm 15370/NAm 17730/SAm

1600-1630 11760/CAm Mo-Sa
 1630-1900 11760/CAm

2200-2300 5040/CAm 9535/CAm 9640/SAm 11760/CAm 13740/SAm 15370/Eu
 2300-2400 5040/CAm 9535/CAm 9640/SAm 11760/CAm 11840/SAm 13740/SAm 15230/SAm 15370/Eu

(Arnie Coro B-17)

Radio Progreso 4765 kHz Bejucal site 0130-0500 UT. ?? // MW 660, 720, 730, 820, 880, 940 kHz.

Radio Rebelde 5025 kHz Bauta site, // MW 610, 670, 820, 1180, 1210, 1620 kHz.

Radio Reloj MW 570, 610, 790, 850, 860, 870, 950 kHz.

RHC B-17 schedule from Nov 12.

Modified an older B-16 schedule of Gayle Van Horn W4GVH/ International Shortwave Broadcast Guide - Winter 2016.
 (wb df5sx, wwdxc BC-DX TopNews Nov 8)

FRANCE [non] - RFI Paris / TDF Issoudun relays in B-17, Winter 29-10-17 to 25-03-18:

3965	0100	0057	27	1	0	-daily-	Fra	RFI	TDF	DRM
3995	2200	2300	27,28	100	260	-daily-	Deu	MBR	MBR	X.19
5905	2000	2100	46N,46SW	500	194	-daily-	Aao	TDA	TDF	
5905	2100	2200	46N,46SW	500	194	-daily-	Aao	TDA	TDF	
5905	2200	2300	46N,46SW	500	194	-daily-	Aao	TDA	TDF	
5925	0600	0700	37W,46W	500	204	-daily-	Fra	RFI	TDF	17-A
5940	2000	2100	46E,47N,47SW	500	160	-daily-	Aao	TDA	TDF	
5940	2100	2200	46E,47N,47SW	500	160	-daily-	Aao	TDA	TDF	
5950	2000	2100	37-38,46-47	250	180	-daily-	Fra	KBS	TDF	60
5960	0300	0500	10,11	500	290	-daily-	Jpn	NHK	NHK	
5970	1300	1600	27E,28	100	21	7	Mu1	MBR	MBR	A.307
6060	0400	0500	46E,47N,47SW	500	160	-daily-	Aao	TDA	TDF	
6060	0500	0600	46E,47N,47SW	500	160	-daily-	Aao	TDA	TDF	
6105	0500	0600	46N,46SW	500	198	-daily-	Aao	TDA	TDF	
6105	0600	0700	46N,46SW	500	198	-daily-	Aao	TDA	TDF	
6140	1300	1400	28	100	60	7	Mu1	MBR	MBR	X.euger
6165	0600	0630	37-39	500	140	-daily-	Ara	NHK	NHK	
6175	0900	1200	27-28SW,37NE	100	153	-daily-	Fra	RFI	TDF	DRM-Tes
6175	0900	1200	27SW,37NW	100	267	-daily-	Fra	RFI	TDF	DRM-Tes
6175	1200	1500	27,37NW	150	0	-daily-	Mu1	RFI	TDF	DRM-Tes
7205	2000	2100	37-38W,46-47	500	198	-daily-	Fra	RFI	TDF	49
7205	2100	2200	28,37-38,46-47	500	198	-daily-	Fra	RFI	TDF	52
7220	0600	0630	46S	250	200	-daily-	Fra	AWR	AWR	x104
7220	1700	1800	18-19,28-30,39-40	500	55	-daily-	Rus	RFI	TDF	55 R
7240	0500	0600	46S,47N,47SW,52NW	100	170	-daily-	Mu1	RMI	TDF	NIG-Ten
7295	0500	0559	46E,47N,47SW	500	160	-daily-	2502-	Aao	TDA	TDF D
7295	0600	0630	46-47SW,52NW	500	170	-daily-	-2402	Hau	RFI	TDF 2-A
7315	1900	2000	46N,46SW	500	200	-daily-	Aao	TDA	TDF	
7375	1800	1900	46E,47N,47SW	500	155	-daily-	Aao	TDA	TDF	
7375	1900	2000	46E,47N,47SW	500	155	-daily-	Aao	TDA	TDF	
7390	0400	0500	38-39,47-48,52NE	500	130	-daily-	Fra	RFI	TDF	12
7390	0500	0600	28SW,37-38,46-47	500	160	-daily-	Fra	RFI	TDF	14
7390	0600	0700	37S,38W,46,47SW	500	185	-daily-	Fra	RFI	TDF	18
9490	0000	0100	11	150	285	-daily-	Spa	RMI	TDF	
9490	0100	0200	11	150	285	-daily-	Spa	RMI	TDF	
9490	0200	0400	11	150	285	-daily-	Spa	RMI	TDF	101
9490	0400	0500	11	150	285	17	Spa	RMI	TDF	102
9610	1900	2000	46W	100	207	-daily-	Eng	RMI	TDF	
9620	0600	0630	37-39	500	140	-daily-	Ara	NHK	NHK	
9635	1900	2000	28,37-38,46-47,52	500	175	-daily-	Fra	RFI	TDF	47
9670	0530	0559	47SE,48S,52E,53W	500	144	-daily-	2502-	Swa	RFI	TDF 10-D

9680	1900	2000	37, 46	500	185	1	Fra	RFI	TDF	R
9735	0600	0700	37S, 38W, 46, 47SW	500	170	-daily-	Eng	RFI	TDF	54
9770	0500	0530	52, 57	500	155	-daily-	Eng	NHK	NHK	
9785	1800	1900	46, 47W	500	170	-daily-	Hau	DWL	DWL	
9790	0400	0500	38-39, 47-48, 52-53	500	140	-daily-	Fra	RFI	TDF	13
9790	0500	0600	28, 37-38, 46-48	500	150	-daily-	Fra	RFI	TDF	15
9790	0600	0700	37W, 46W	500	204	-daily-	2502-	Fra	RFI	TDF 17-B
9790	0700	0800	37W, 46W	500	204	-daily-	Fra	RFI	TDF	25
9790	1900	2000	37S, 38W, 46, 47SW	500	195	-daily-	Fra	RFI	TDF	45
9790	2000	2100	28SW, 37-38, 46-47	500	188	-daily-	Fra	RFI	TDF	51
9790	2100	2200	28SW, 37-38, 46-47	500	188	-daily-	Fra	RFI	TDF	53
9800	1700	1759	18-19, 28-30, 39-40	500	55	-daily-	2502-	Rus	RFI	TDF D . R
9800	1830	1900	46S, 47SE	500	170	-daily-	Hau	MBR	MBR	A.316
9805	0600	0630	46-47SW, 52NW	500	170	-daily-	Hau	RFI	TDF	1
9810	1800	1900	46-47, 52-53NW	500	200	-daily-	Fra	RFI	TDF	40
9825	2000	2030	46-47SW, 52NW	500	170	-daily-	Hau	RFI	TDF	6
9850	1930	2000	46SE	250	165	-daily-	Ibo	AWR	AWR	x112
11670	1500	1600	48NW	100	125	347	Mu1	MBR	MBR	X.eaer
11700	0400	0459	38-39, 47-48, 52NE	500	137	-daily-	2502-	Fra	RFI	TDF D
11700	0500	0600	28, 37-38, 46-48NW	500	160	-daily-	Fra	RFI	TDF	16
11700	0600	0659	38, 46-48NW, 52	500	150	-daily-	2502-	Fra	RFI	TDF D
11700	0700	0800	37S, 38W, 46, 47SW	500	190	-daily-	Fra	RFI	TDF	24
11730	0530	0600	46, 47	500	190	-daily-	Fra	NHK	NHK	
11765	1800	1900	46-47, 52-53NW	500	160	-daily-	Fra	RFI	TDF	42
11780	1600	1700	41, 42S, 43SW	150	82	-daily-	Mu1	RFI	TDF	DRM-Tes
11795	1900	2000	46-47, 47SW, 52NW	100	169	-daily-	Mu1	RMI	TDF	
11880	0700	0730	46S	250	170	-daily-	Fra	AWR	AWR	x104
11885	1800	1859	37, 46	500	185	1	Fra	RFI	TDF	R-D
11945	1700	1900	52, 57	500	155	-daily-	Jpn	NHK	NHK	
11970	1600	1630	47E, 48	500	130	37	Mu1	MBR	MBR	A.318
11975	0600	0630	37-39	500	140	-daily-	Ara	NHK	NHK	
11995	0600	0630	28, 37-38S, 46-47	500	170	-daily-	2502-	Hau	RFI	TDF 2-B
11995	1800	1900	46-47, 52-53NW	500	175	-daily-	Fra	RFI	TDF	41
11995	1900	2000	38, 46-48, 52-53, 57	500	153	-daily-	Fra	RFI	TDF	46
11995	2000	2100	28, 37-38S, 46-47	500	165	-daily-	Fra	RFI	TDF	AC Tent
11995	2100	2200	28, 37-38S, 46-47	500	165	-daily-	Fra	RFI	TDF	AC Tent
12015	0600	0630	46S	250	162	-daily-	Fra	AWR	AWR	x104
13660	1800	1900	48SW	250	140	-daily-	Mu1	MBR	MBR	X.Ugand
13660	1900	1930	52NW, 52S, 53W, 57N	500	155	-daily-	Por	RFI	TDF	8
13685	0700	0730	46-47SW, 52NW	500	170	-daily-	Hau	RFI	TDF	3
13685	1700	1800	37-38S, 46-47, 52	500	165	-daily-	Fra	RFI	TDF	35
13695	0500	0559	37-38S, 46-48, 52	500	155	-daily-	2502-	Fra	RFI	TDF D
13695	0600	0700	38, 46-48, 52	500	150	-daily-	Fra	RFI	TDF	19
13695	0700	0800	37S, 38W, 46, 47SW	500	185	-daily-	Fra	RFI	TDF	23
13695	0800	0900	37W, 46W	500	204	-daily-	Fra	RFI	TDF	27
13725	1430	1500	40	500	90	-daily-	Fas	NHK	NHK	
13740	0730	0830	46SE, 47W	150	170	-daily-	Hau	RMI	TDF	Alterna
13740	1700	1800	37S, 38W, 46, 47SW	500	185	-daily-	Fra	RFI	TDF	37
13740	1800	1859	46, 47, 52-53NW	500	160	-daily-	2502-	Fra	RFI	TDF D
13740	1900	2000	37-38, 46-48, 52	500	155	-daily-	-2402	Fra	RFI	TDF 48-A
15130	1900	2100	46-48, 52, 53	500	152	-daily-	Jpn	NHK	NHK	
15180	1700	1800	48SW, 58NW	100	144	7	Kin	MBR	MBR	X.Rwand
15195	1425	1630	46, 47W	500	170	7	Hau	DWL	DWL	dw.com/
15200	1300	1400	46, 47W	500	165	-daily-	Hau	DWL	DWL	Alterna
15215	1600	1700	4, 8, 9	500	300	4	Mu1	MBR	MBR	A.nusae
15290	0800	1000	46, 47	500	190	-daily-	Jpn	NHK	NHK	
15300	0600	0700	38, 46S, 47, 48NW, 52	500	153	-daily-	Fra	RFI	TDF	20
15300	0700	0800	46S, 47SW, 52	500	165	-daily-	Fra	RFI	TDF	22
15300	0800	0900	28, 36-38, 46-47, 52	500	185	-daily-	Fra	RFI	TDF	28
15300	0900	0959	37S, 38W, 46, 47SW	500	195	-daily-	Fra	RFI	TDF	Tentat
15300	1200	1259	37S, 38W, 46, 47SW	500	195	-daily-	2502-	Fra	RFI	TDF D
15300	1600	1700	37S, 38W, 46, 47SW	500	204	-daily-	Fra	RFI	TDF	Tentat
15300	1700	1730	52NW, 52S, 53W, 57N	500	155	-daily-	-2402	Por	RFI	TDF 7-A

15300	1800	1900	46-47,52-53NW	500	155	-daily-		Fra	RFI	TDF	43
15300	1900	2000	46-48W,52,53W	500	155	-daily-	2502-	Fra	RFI	TDF	48-B
15315	0700	0730	28,37-38,46-47	500	170	-daily-		Hau	RFI	TDF	4
15360	1700	1730	48E	250	120	17		Mu1	MBR	MBR	X.soma1
15360	1900	1929	52NW,52S,53W,57N	500	155	-daily-	2502-	Por	RFI	TDF	D
15425	1700	1800	48SW	250	140	-daily-		Mu1	MBR	MBR	X.Ugand
15440	0730	0830	46SE,47W	150	170	-daily-		Hau	RMI	TDF	
15450	1730	1800	48	100	125	-daily-		Orm	RMI	TDF	RMI
15455	0800	0830	46W	500	198	-daily-		Man	RFI	TDF	56
17485	1400	1430	41	250	83	1		Mu1	MBR	MBR	B.B11
17510	1400	1430	41	250	83	7		Mu1	MBR	MBR	A.B11
17510	1430	1515	41	250	83	7		Mu1	MBR	MBR	A.B11
17540	1430	1445	41	250	90	1		Mu1	MBR	MBR	B.339
17570	1630	1700	48	250	122	-daily-		Som	AWR	AWR	x114
17580	1500	1600	48NW	100	125	347	-301117	Mu1	MBR	MBR	X.eaer
17580	1500	1600	48NW	100	125	347	011217-	Mu1	MBR	MBR	A.eaer
17580	1700	1730	48E	150	120	23456		Mu1	MBR	MBR	X.soma1
17605	1600	1700	48SW,58NW	100	144	7		Kin	MBR	MBR	X.Rwand
17615	1600	1700	46-47SW,52NW	500	171	-daily-		Hau	RFI	TDF	5
17620	0800	0859	37S,38W,46,47SW	500	185	-daily-	2502-	Fra	RFI	TDF	D
17620	1200	1300	46,47SW	500	201	-daily-		Fra	RFI	TDF	32
17620	1700	1759	28,37-38,46-48,52	500	165	-daily-		Fra	RFI	TDF	D
17630	1600	1630	47E,48	500	130	37		Mu1	MBR	MBR	X.318
17630	1700	1800	38E,39S,48	100	125	14		Mu1	MBR	MBR	X.336
17660	1200	1300	37S,38W,46,47SW	500	185	-daily-		Fra	RFI	TDF	33
17685	1700	1730	52NW,52S,53W,57N	500	155	-daily-	2502-	Por	RFI	TDF	7-B
17765	1600	1700	46SE,47W	150	170	-daily-		Hau	RMI	TDF	
17800	1300	1400	46,47W	500	170	-daily-		Hau	DWL	DWL	
17815	1200	1230	46W	500	198	-daily-		Man	RFI	TDF	57
17815	1630	1700	48SW	250	140	-daily-		Mu1	MBR	MBR	X.Ugand
17840	1425	1630	46,47W	500	172	7		Hau	DWL	DWL	dw.com/
17850	0600	0659	28,37,38W,46,47	500	185	-daily-	2502-	Fra	RFI	TDF	D
17850	0700	0800	28,37-38,46-57	500	155	-daily-		Fra	RFI	TDF	21
17850	0800	0900	28,37-38,46-57	500	160	-daily-		Fra	RFI	TDF	29
17850	1700	1800	28,37-38,46-52	500	150	-daily-		Fra	RFI	TDF	38
17850	1800	1859	46-47,52-53NW	500	185	-daily-	2502-	Fra	RFI	TDF	D
17870	1700	1800	48SW,52NE,53NE	100	140	7		Mu1	MBR	MBR	X.BuCAf
21580	0700	0759	37-38,47,52-57	500	155	-daily-	2502-	Fra	RFI	TDF	D
21580	0800	0900	37-38S,46-52	500	155	-daily-		Fra	RFI	TDF	30
21580	1200	1300	39,46-48,52-57	500	155	-daily-		Fra	RFI	TDF	34
21580	1700	1759	38,46-48,52-53	500	150	-daily-	2502-	Fra	RFI	TDF	D
21580	1800	1859	46-47,52-53NW	500	200	-daily-	2502-	Fra	RFI	TDF	D
21650	1330	1430	37S,38W,46,47SW	500	271	-daily-		Mu1	RFI	TDF	
21690	1500	1600	47-48,52E,53W	500	145	-daily-		Swa	RFI	TDF	11
21690	1700	1759	28,37-38,46-52N	500	162	-daily-	2502-	Fra	RFI	TDF	D

(hfcc B-17 RFI/TDF registration entries, via wwdxc BC-DX TopNews Oct 8)

GERMANY - Shortwaveservice.com Kall/Eifel B17 Schedules - All times in CET (=UTC +1):

6005 kHz

Monday-Friday

0900-1100 Radio Belarus (dt.)
 1100-1200 RAE Argentinien (dt.) (außer Montags: Musik)
 1200-1227 Radio Slowakei International (dt.)
 1227-1230 Nordschleswiger (dt.)
 1230-1300 SRF Rendez-Vouz (dt.)
 1300-1327 Radio Slowakei International (en.)
 1330-1357 Radio Slowakei International (fr.)
 1400-1430 Voice Of Mongolia (en.)
 1430-1500 Radio Tirana (en.)
 1500-1527 Radio Slowakei International (dt.)
 1527-1530 Nordschleswiger (dt.)

12

1530-1557 Radio Slowakei International (fr.)
1600-1627 Radio Slowakei International (sp.)
1630-1657 Radio Slowakei International (en.)
1700-1730 Polskie Radio (dt.)
1730-1757 Radio Slowakei International (en.)
1757-1800 Nordschleswiger (dt.)
1800-1900 SRF Echo der Zeit (dt.)

Saturday

0900-1100 Radio Belarus (dt.)
1100-1200 RAE Argentinien (dt.) (außer Montags)
1200-1227 Radio Slowakei International (dt.)
1300-1327 Radio Slowakei International (en.)
1330-1357 Radio Slowakei International (fr.)
1400-1430 Voice Of Mongolia (en.)
1430-1500 Radio Tirana (en.)
1500-1527 Radio Slowakei International (dt.)
1530-1557 Radio Slowakei International (fr.)
1600-1627 Radio Slowakei International (sp.)
1630-1657 Radio Slowakei International (en.)
1700-1730 Polskie Radio (dt.)
1730-1757 Radio Slowakei International (en.)
1800-1900 SRF Echo der Zeit (dt.)

Sunday

0900-1100 Radio Belarus (dt.)
1100-1200 Welle 370 (1. Wo) / RMG reprise (2. Wo) / Radio Gloria (3. Wo) /
RMG akutele Ausgabe (4. bzw. letzte Wo)
1200-1227 Radio Slowakei International (dt.)
1300-1327 Radio Slowakei International (en.)
1330-1357 Radio Slowakei International (fr.)
1400-1500 Radio Amathusia (nl.)
1500-1527 Radio Slowakei International (dt.)
1530-1557 Radio Slowakei International (fr.)
1600-1627 Radio Slowakei International (sp.)
1630-1657 Radio Slowakei International (en.)
1700-1730 Polskie Radio (dt.)
1730-1757 Radio Slowakei International (en.)
1800-1900 SRF Echo der Zeit (dt.)

7310 kHz

Saturday

0900-1000 Radio Canada Int. (fr.)
1000-1030 Radio Canada Int. (en.)
1045-1100 Swissinfo (en.)
1100-1200 Welle 370 (4. Samstag / Monat)
1200-1600 Radio MiAmigo International

Sunday

1200-1600 Radio MiAmigo International

6085 kHz

Daily

0900-1900 Radio Mi Amigo International

3985 kHz

Monday-Friday

1700-1730 Radio Tirana (fr.)
1730-1757 Radio Slowakei International (fr.)
1800-1900 SRF Echo der Zeit

1900-2000 Radio Mi Amigo International
 2000-2027 Radio Slowakei International (dt.)
 2027-2030 Nordschleswiger (dt.)
 2030-2057 Radio Slowakei International (fr.)
 2100-2127 Radio Slowakei International (en.)
 2130-2200 Radio Tirana (dt.)
 2200-2230 SRF Das war der Tag (dt.)

Saturday

1700-1730 Radio Tirana (fr.)
 1730-1757 Radio Slowakei International (fr.)
 1800-1900 SRF Echo der Zeit
 2000-2027 Radio Slowakei International (dt.)
 2027-2030 Nordschleswiger (dt.)
 2030-2057 Radio Slowakei International (fr.)
 2100-2127 Radio Slowakei International (en.)
 2130-2200 Radio Tirana (dt.)

Sunday

1730-1757 Radio Slowakei International (fr.)
 1800-1900 SRF Echo der Zeit
 1900-2000 Radio. Menschen und Geschichten (dt. / letzter Sonntag)
 2000-2027 Radio Slowakei International (dt.)
 2027-2030 Nordschleswiger (dt.)
 2030-2057 Radio Slowakei International (fr.)
 2100-2127 Radio Slowakei International (en.)
 (press)

European Shortwave Radio Service <<http://shortwaveradio.de>> Starting Monday, October 30, with the beginning of the B17 schedule, times for our 6160 kHz outlet have been slightly changed:

10:00 - 12:00 UTC

14:00 - 16:00 UTC

20:00 - 22:00 UTC

Schedule for 3975 kHz stays as it is:

12:00 - 14:00 UTC

16:00 - 18:00 UTC

20:00 - 22:00 UTC

Mondays to Saturdays

QSLs will be sent off as soon as possible, after 3975 khz is fully operational. (ESR press)

GERMANY - [ASCENSION ISL. / FRANCE / MADAGASCAR / SAO TOME / SOUTH AFRICA / SRI LANKA / UAE] -

Deutsche Welle, Bonn + Berlin - Schedule B-17, valid from October 29, 2017 to March 24, 2018:

Language

Start	End	Freq	Station	Power	Azi	Target	Days
-------	-----	------	---------	-------	-----	--------	------

AMHARIC

1600	1700	15275	TRINCOMALEE	250	270	Ethiopia	Daily
------	------	-------	-------------	-----	-----	----------	-------

1600	1700	17800	UAE	250	225	Ethiopia	Daily
------	------	-------	-----	-----	-----	----------	-------

DARI

1330	1400	9720	UAEBAYYA	250	45	Afghanistan	Daily
------	------	------	----------	-----	----	-------------	-------

1330	1400	15430	TRINCOMALEE	250	335	Afghanistan	Daily
------	------	-------	-------------	-----	-----	-------------	-------

HAUSA

0630	0700	7220	SAO TOME	100	0	West Africa	Daily
------	------	------	----------	-----	---	-------------	-------

0630	0700	9830	N	500	185	West Africa	Daily
------	------	------	---	-----	-----	-------------	-------

0630	0700	15200	RSA	250	330	West Africa	Daily
------	------	-------	-----	-----	-----	-------------	-------

1300	1400	9830	SAO TOME	100	20	West Africa	Daily
------	------	------	----------	-----	----	-------------	-------

1300	1400	17800	FOUDUN	500	170	West Africa	Daily
------	------	-------	--------	-----	-----	-------------	-------

1300	1400	17840	ASCENSION	250	55	West Africa	Daily
1800	1900	9785	FOUDUN	500	170	West Africa	Daily
1800	1900	9830	SAO TOME	100	0	West Africa	Daily
1800	1900	15200	RSA	250	330	West Africa	Daily

HAUSA (Football)

1425	1630	15195	FOUDUN	500	170	West Africa	Saturdays
1425	1630	17840	FOUDUN	500	172	West Africa	Saturdays

PASHTO

1400	1430	9720	UAE	250	45	Afghanistan	Daily
1400	1430	15430	TRINCOMALEE	250	335	Afghanistan	Daily

SWAHILI

1000	1100	15275	MDG	250	300	East Africa	Daily
1000	1100	17710	RSA	250	7	East Africa	Daily

(DW Bonn Germany, via ADDX Andreas Volk-D, via wwdxc BC-DX TopNews Oct 25)

These are RESERVE alternative frequency requests:

15340	1600	1700	48	UAE	250	225	0	218	Amh	UAE	Alterna
11800	0630	0700	46,47W	N	500	185	0	218	Hau	D	Alterna
17800	0630	0700	46,47W	UAE	250	260	0	218	Hau	UAE	Alterna
15200	1300	1400	46,47W	F	500	165	0	211	Hau	F	Alterna
21780	1300	1400	46,47W	N	500	185	0	218	Hau	D	Alterna
11620	1330	1400	40E,41NW	UAE	250	45	0	217	Prs	UAE	Alterna Dari/Persian
15215	1330	1400	40E,41NW	UAE	250	45	-15	146	Prs	UAE	Alterna Dari/Persian
17720	1330	1400	40E,41NW	F	500	76	0	217	Prs	D	Alterna Dari/Persian
11620	1400	1430	40E,41NW	UAE	250	45	0	217	Pus	UAE	Alterna
15215	1400	1430	40E,41NW	UAE	250	45	-15	146	Pus	UAE	Alterna
17720	1400	1430	40E,41NW	F	500	76	0	217	Pus	D	Alterna

(DW Bonn Germany, via ADDX Andreas Volk-Munich-D, via wwdxc BC-DX TopNews Oct 25)

GERMANY - [AUSTRIA / BULGARIA / FRANCE / MADAGASCAR / U.S.A] -

MEDIA BROADCAST GmbH (formerly T-SYSTEMS - DTK) B-17 operational schedule 29 Oct 2017 - 25 March 2018

FREQ	START	STOP	CIRAF		TX/Ant#	AZI	TYPE	DAYS	LOC	POW	BRC
7220	0600-0630	46S			235	200	216	1234567	F	250	AWR
12015	0600-0630	46S			203	162	196	1234567	F	250	AWR
11880	0700-0730	46S			235	170	216	1234567	F	250	AWR
17570	1630-1700	48			RII02008	122	217	1234567	F	250	AWR
15155	1730-1800	48			R102002	126	211	1234567	F	250	AWR
9850	1930-2000	46SE			RII02002	165	211	1234567	F	250	AWR
7315	0300-0330	48			310100	140	216	1234567	N	250	AWR
5975	0400-0430	28SE			310101	140	146	1234567	N	100	AWR
6045	0430-0500	37,38W			340100	220	216	1234567	N	100	AWR
11980	0700-0800	37,38W			340100	210	216	1234567	N	100	AWR
15160	0800-0830	37,38W			330200	210	218	1234567	N	250	AWR
15145	0830-0900	37,38W			340200	210	218	1234567	N	100	AWR
9610	1000-1100	28W			340100	180	216	1.....	N	100	AWR
15480	1300-1330	42,43W			320200	75	218	1.....7	N	250	AWR
15480	1300-1330	42,43W			320200	75	218	.23456.	N	250	AWR
15480	1330-1500	42,43W			320200	70	218	1234567	N	250	AWR
15250	1530-1600	41N			320200	90	218	1234567	N	250	AWR
9830	1600-1630	28SE			350300	135	216	1234567	N	100	AWR
15490	1630-1700	48			310200	139	218	1234567	N	250	AWR
11985	1700-1730	48			320100	141	216	1234567	N	250	AWR
11985	1730-1800	37,38W			310100	210	216	1234567	N	100	AWR
11750	1900-1930	46W			310100	218	216	1234567	N	250	AWR
9535	1900-2000	37,38W			330100	210	216	1234567	N	100	AWR
7205	1930-2000	37,38W			310100	210	216	1234567	N	100	AWR
9515	2000-2030	37,38W			310100	210	216	1234567	N	100	AWR

9830	0630-0700	46,47W	330100	185	216	1234567	N	500	DWL
17800	1300-1400	46,47W	RII01008	170	217	1234567	F	500	DWL
9785	1800-1900	46,47W	235	170	216	1234567	F	500	DWL
Bundesliga - League Football Special in Hausa, Sa only.									
15195	1425-1630	46,47W	RII01008	170	2177	F	500	DWL
181117-161217 only									
15195	1425-1630	46,47W	RII01008	170	2177	F	500	DWL
130118-170318 only									
17840	1425-1630	46,47W	RII01008	172	2177	F	500	DWL
181117-161217 only									
17840	1425-1630	46,47W	RII01008	172	2177	F	500	DWL
130118-170318 only									
7220	0800-0830	27,28N	350100	260	156	1.....	N	100	BVB
6030	1830-1930	28,29	310101	100	146	1.....	N	100	BVB
9440	0600-0615	46N,47NW,38W,37S	340101	180	146	1234567	N	125	BVB
7325	0445-0515	39N	310100	120	216	1.....	N	125	BVB
5935	1915-1930	39,40	320100	125	216	1.....	N	250	BVB
9450	0500-0515	39,40	330100	120	2166.	N	250	BVB
11790	1600-1800	38S,39S,47,48	330100	148	216	12.....	N	100	BVB
11790	1600-1730	38S,39S,47,48	330100	148	216	..3....	N	100	BVB
11790	1600-1730	38S,39S,47,48	330100	148	2167	N	100	BVB
11790	1630-1700	38S,39S,47,48	330100	148	2166.	N	100	BVB
11790	1630-1730	38S,39S,47,48	330100	148	216	...45..	N	100	BVB
21480	1200-1230	43S,44S	TM	45	1577	MDC	125	BVB
21480	1230-1245	54	TM	85	157	1.....	MDC	125	BVB
7365	1800-1900	39,40	320100	105	2165..	N	100	BVB
7365	1800-1830	39,40	320100	105	21667	N	100	BVB
7365	1830-1900	39,40	320100	105	216	1.3....	N	100	BVB
17510	1400-1430	41	RI01002	83	216	1st Sa	F	250	BVB
17510	1430-1500	41	RI01002	83	2167	F	250	BVB
11790	0200-0230	41	TK1	50	156	1...5.7	MDC	125	BVB
11875	1630-1700	47,48	320100	145	216	1234567	N	100	BVB
5995	1710-1730	38E,39,40W	1100602	141	616	.2.4...	SOF	100	BVB
5995	1710-1745	38E,39,40W	1100602	141	616	..3.56.	SOF	100	BVB
5995	1715-1745	38E,39,40W	1100602	141	6167	SOF	100	BVB
9715	1800-2000	39	3	115	2181	OE	100	BVB
9715	1830-2000	39	3	115	2187	OE	100	BVB
9715	1800-1815	39	3	115	2186.	OE	100	BVB
9715	1800-1830	39	3	115	2185..	OE	100	BVB
7425	1930-2015	39	310101	126	146	1.....	N	100	BVB
15420	1800-1830	48SW,52NE,53NE	TF	320	1596.	MDC	250	BVB
11790	1500-1600	41NW	330100	96	216	.2.4.6.	N	125	BVB
6055	1130-1200	27,28	340101	222	146	1.....7	N	125	EMG
15285	1230-1500	41	340200	89	218	1234567	N	250	GFA
15235	1330-1530	41NE,43S,49N	310200	85	218	1234567	N	250	GFA
15150	1530-1630	40E,41NW	310200	99	218	1234567	N	250	GFA
7410	0030-0130	40E,41NW	330100	100	216	1234567	N	250	GFA
7380	2330-0030	41NE,43S,49N	330100	85	216	1234567	N	250	GFA
11900	1530-1630	29S	3	95	2187	OE	100	HCJ
7330	1100-1200	27,28	6	283	805	1st Su	OE	100	JOY
6095	0900-1600	18SW,27,28W,37N	350100	240	156	1.....	N	100	KBC\$
6045	0900-1000	27E,28	310101	240	146	1.....	N	125	KBC\$
9475	0800-0900	27N,28S	310101	230	146	1.....	N	125	KBC\$
5960	0000-0200	2,3,4,6,7,8,9,10	310100	300	216	1.....	N	125	KBC
9800	1830-1900	46S,47SE	HR 4/4/0.5	170	216	1234567	F	500	LWF
6140	0900-1000	27,28E	6	270	805	1.....	OE	100	MVB\$
13710	1200-1230	19-26	320200	60	2187	N	250	MWF
6060	1600-1630	29,30	340101	60	1467	N	250	MWF
11970	1600-1630	47E,48	HR 4/4/0.8	130	217	..3...7	F	500	OGM
15205	1430-1445	41	330200	94	216	1.....	N	250	PAB

5930	1930-2000	37,38	340101	155	146	1.....	N	250	PAB
17580	1500-1600	48NW	HR 4/4/0.5	125	216	..34..7	F	100	RAD++
									RAD 011217-240318 only
6045	0900-1000	27E,28	350100	233	156	1.....	N	100	RSH\$
15215	1600-1700	4,8,9	HR 4/4/0.8	300	218	...4...	F	500	R00
R00 Radio OeOemrang Amrum isle festivity broadcast, single day operation February 21, 2018									
5970	1300-1600	27E,28	RII01006	21	146	1234567	F	100	SFZ\$
11810	1700-1800	38E,39S,48	350300	144	216	...4...	N	100	SBO
11810	1700-1730	38E,39S,48	350300	144	216	1....6.	N	100	SBO
15420	1800-1859	48SW,52NE,53NE	TF	320	1597	MDC	250	SJK
6155	0500-0530	27SE,28SW	4	ND	926	1234567	OE	300	NHK
6165	0430-0500	27,28	310101	85	146	1234567	N	125	NHK
9620	0300-0500	38,39,40	330100	140	216	1234567	N	250	NHK
9765	1700-1900	38,39,40	340100	140	216	1234567	N	250	NHK
5985	0400-0430	11,12	LPH	222	805	1234567	RMI	100	NHK

List of Broadcasters which are using MEDIA BROADCAST technical equipment

AWR Adventist World Radio
 BVB High Adventure Gospel - Bible Voice Broadcasting
 DWL Deutsche Welle Bonn / Berlin, Germany
 EMG Evangelische Missionsgemeinden in Deutschland
 FPU Free Press Unlimited (former PNW Press Now HOL)
 GFA Gospel for Asia
 HCJ Reach Beyond (former Voice of the Andes)
 Sa only, 1530 UT Russian, 1600 UT Chechen language.
 JOY Radio Joystick, Germany, 1st Su
 KBC The Mighty KBC
 LWF Lutheran World Federation
 MBR MEDIA BROADCAST (former DTK)
 MVB Mecklenburg-Vorpommern Baltic Radio
 MWF Missionswerk Friedensstimme, Gummersbach - Germany
 NDR Norddeutscher Rundfunk, Hamburg, Germany
 NHK Nippon Hoso Kyokai, Radio Japan World, Tokyo, Japan.
 OGM MBR internal customer name:
 NGO [RHU Radio Huriyo Xoriyo Ogaden, ONLF]
 <http://en.wikipedia.org/wiki/Non-governmental_organization>
 <http://fr.wikipedia.org/wiki/Organisation_non_gouvernementale>
 PAB Pan Am Broadcasting
 RAD MBR internal customer name
 RSH MBR internal customer name:
 formerly request
 Radio - Menschen & Geschichten (Shortwaveservice.com)
 SBO Sagalee Bilisummaa Oromoo, Voice of Oromo Liberation. Berlin.
 SJK MBR internal customer name:
 Radio Itahuka in Kirundi C/E Africa Burundi-Rwanda on Sa.
 Please send report to
 <QSL-Shortwave@media-broadcast.com> Veiled in MBR schedule.

MEDIA BROADCAST GmbH
 Order Management & Backoffice
 Erna-Scheffler-Strasse 1
 D-51103 Cologne, Germany

Please send your inquiries and reception reports to:
 E-Mail: <QSL-Shortwave@media-broadcast.com>
 E-Mail: <info@media-broadcast.com>
 Internet: <<http://www.media-broadcast.com/en/startpage/services/radio/short-wave-networks>>

by wwdxc BC-DX TopNews Oct 28, 2017)

GREECE - Reception of Voice of Greece on 9420/9935 kHz, Nov. 2:
 0600&0753 on 9420 AVL 170 kW / 323 deg to WEu Greek*tx#3
 0600&0753 on 9935 AVL 100 kW / 285 deg to WEu Greek*tx#1
 * incl.news in Serbian 0753-0757UTC and off air at 0805UTC
 (DX MIX 1039)

INDIA - All India Radio B17 Schedule Updates from 29 Oct 2017:

Home Services

0630-0830 Hindi 9380(A) Vividh Bharati

External Services

0015-0430 Urdu add 6145(A)
 0100-0200 Sindhi add 5990 (Kh)
 0215-0310 Kannada 15030(B) ex 15120
 0315-0415 Hindi 15030(B) ex 15120
 0215-0300 Pushtu 11560(B), 11670(P), add 9910(Kh)
 0300-0345 Dari 11560(B), 11670(P), add 9910(Kh)
 0400-0430 Persian 11560(B) ex 11670
 0430-0530 Arabic 11560(B) ex 11670
 0700-0800 Nepali 11730(Kh) ex 11850
 0830-1130 Urdu Add 6145(A), 11560(Kh) ex 11620
 1115-1215 Tamil 9810(P)
 1215-1245 Telugu 9810(P)
 1215-1330 Tibetan 11620(P) ex 11775, 7505(Ki) ex 7555
 1330-1430 Nepali 11620(P) ex 11775, 7505(Ki) ex 7555
 1300-1500 Sinhala 9910(Kh) ex 9820
 1515-1615 Gujarathi 13695(B) ex 13640
 1615-1715 Russian 9595(Kh) ex 11620
 1615-1730 Hindi add 7505(P)
 1730-1830 Malayalam add 7505(P)
 2245-0045 English Add 9705(P) [Panaji, Goa: WOR 1902]

For latest updated schedules please check in the links given below:

External Service Time Wise: <<http://qsl.net/vu2jos/es/time.htm>>

External Service Language Wise: <<http://qsl.net/vu2jos/es/Language.htm>>

Complete B-17 SW service in Frequency order: <<http://qsl.net/vu2jos/sw/freq.htm>>

(Jose Jacob, VU2JOS, National Institute of Amateur Radio, Hyderabad, India via DXLD)

Additional Changes to All India Radio External/Home Services B17:

1215-1330 Tibetan 6155 ex 7555
 1330-1430 Nepali 6155 ex 7555
 1515-1530 Hindi Home Service News 6155 ex 7555
 1530-1600 English Home Service News, Spot light 6155 ex 7555

Delete DRM on 603 kHz (Chinusrah) of the following broadcasts:

0130-0230 Nepali, 0700-0800 Nepali, 1000-1100 English, 1115-1215 Tamil, 1215-1315 Burmese, 1330-1430 Nepali.

Thanks to Alok Das Gupta, Kolkata for the info.

(Jose Jacob, VU2JOS, Oct 30, dx_india yg via DXLD)

JAPAN [AFGHANISTAN / AUSTRIA / BANGLADESH / FRANCE / GERMANY / INDONESIA / LITHUANIA / MADAGASCAR / MYANMAR / PALAU / RUSSIA / SINGAPORE / SOUTH AFRICA / TAJIKISTAN / TANZANIA{Zanzibar} / U.A.E. / U.K. / U.S.A. / UZBEKISTAN / VATICAN STATE]

NHK World - Radio Japan Tokyo - October 29, 2017 - March 25, 2018. B-17, according to NHK World Radio Japan.
 For details and FM please access URL

Arabic

0600-0630 ME/NAf 6165/F

18

Bengali

1300-1345 SWAs 11685/SNG

1500-1545 SWAs 11685/SNG

Burmese

1030-1100 SEAs 11740/SNG

1430-1500 SEAs 11740/SNG

Via MRTV Myanmar Radio Yangon Yaegu, Myanmar.

1445-1500 Mo-Wed, 1445-1505 UT on Sa and Su

SEAs SW 5985 ; MW 576 Myanma Radio, Yangon Yaegu

SEAs MW 594 Myanma Radio, Nay Pyi Taw

2340-2400 SEAs 13650/Yam

Chinese

0430-0500 As 11825/Yam

1130-1200 As 6090/Yam

1230-1300 As 6190/Yam

1330-1400 As 6190/Yam

1430-1500 As 6190/Yam

2230-2250 As 9560/Yam

English

0500-0530 EUR 6155/OE

0500-0530 Af/EAf/SAf 9770/F

Via MRTV Myanmar Radio Yangon Yaegu, Myanmar.

0710-0725 Sa and Su

SEAs SW 9730 (ex5985) MW 576 Myanma Radio, Yangon Yaegu

SEAs MW 594 Myanma Radio, Nay Pyi Taw

1100-1130 SEAs 11825/SNG

1400-1430 SEAs 11925/Palau

1400-1430 SWAs 9560/UZB

Via MRTV Myanmar Radio Yangon Yaegu, Myanmar.

1540-1600 Thurs and Frs

SWAs 5985, MW 576 Myanma Radio, Yangon Yaegu

SWAs MW 594 Myanma Radio, Nay Pyi Taw

1800-1830 CAf 11800/RSA

1930-2000 Af/EAf/SAf 9485/VAT

1930-2000 Oc/Hawaii 9625/Yam

French

0530-0600 WAf 11730/F

0530-0600 CAf 13840/MDG

2030-2100 WAf 9855/MDG

Hindi

0059-0120 SWAs 6155/UZB

1430-1500 SWAs 15720/MDG

1530-1600 SWAs 7565/UZB

Indonesian

1115-1200 SEAs 9625/Palau

1315-1400 SEAs 11925/Palau; MW 1170 kHz Simalungun - Radio Rasita.

2130-2200 SEAs 6075/Yam

Japanese

0300-0400 As FE 11790/Yam

0200-0500 As 15195/Yam

0700-0800 As 11825/Yam

0800-1600 As 9750/Yam

2100-2400 As 11910/Yam

2000-2100 OCE/Hawaii 9625/Yam

0200-0500 SEAs 17810/Yam
 0700-0900 SEAs 15280/Yam
 0900-1500 SEAs 11815/Yam
 2100-2300 SEAs 11665/Yam
 0200-0400 SWAs 15590/Yam
 0900-1000 SWAs 15325/Yam
 1500-1700 Af/SWAs/SAs 9680/Yam
 0800-1000 SWEu/WAf 15290/F
 1700-1900 SEu/CAf/soAf 11945/F
 1900-2100 CAf 15130/F
 0300-0500 SEEu/NE/ME/NEAf 9620/N
 1700-1900 SEEu/NE/ME/NEAf 9765/N
 1900-2100 CeAs/ME/NE/NAf 9670/Yam
 0300-0500 CAm 5960/F
 1700-1900 SAm 13720/Yam

Korean

0415-0445 As 13720/Yam
 1100-1130 As 6090/Yam
 1200-1230 As 6090/Yam
 1300-1330 As 6190/Yam
 1400-1430 As 6190/Yam
 2209-2230 As 9560/Yam

Persian

0400-0430 ME 11730/UZB
 1430-1500 ME 13725/F
 1630-1700 ME MW927/TJK

Portuguese

0900-0930 SAm 6195/WHRI
 2130-2200 SAm 17540/WHRI

Russian

0330-0400 EU MW 738/M MW1386lit
 0430-0500 EU 6165/N
 0530-0600 EAs FE 11790/Yam
 1100-1130 EAs FE 5985/Yam
 1600-1630 EU MW 738/M MW927/TJK
 1730-1800 EU MW1386/LTV

Spanish

0400-0430 CAm 6195/WHRI
 0400-0430 CSAm 5985/WRMI
 0930-1000 CSAm 6195/WHRI

Swahili

0315-0400 EAf 9560/MDG
 1729-1800 EAf 13730/MDG

Thai

1130-1200 SEAs 11740/SNG
 1230-1300 SEAs 11740/SNG
 1230-1300 SEAs Mo-Fr MW Thammasat University Radio, Bangkok 981 kHz
 2259-2320 SEAs 13650/Yam

Urdu

1515-1600 SWAs 11775/UAE
 1700-1745 SWAs MW927/TJK

Vietnamese

1100-1130 SEAs 11740/SNG
 1300-1315 Tue-Fr

1300-1320 Mo
 1330-1345 Sa
 1300-1330 SEAs 11740/SNG
 2320-2340 SEAs 13650/Yam

Not anymore included in RJ NHK pdf file, but still on HFCC B-17 database Fridays only DRM mode test transmission via 9760/Wof Woofferton U.K., 100 kW, slewed at 105 degrees azimuth, RJ English 1100-1130 UT, RJ Russian 1130-1200 UT. (NHK Radio Japan, PDF.format file transformed by wb at wwdxc BC-DX TopNews, October 25, 2017)

KOREA NORTH - B-17 Transmission Schedule of the Voice of Korea, Pyongyang, DPR Korea valid from Sunday, 29 October Juche 106 (2017), 0330 UT last modified: 25 October Juche 106 (2017):

0330 Chinese	13650	15105	SEAs
0330 Korean (PBS)	7220	9435	9730 NEChina
0330 Spanish	11735	13760	15180 CAm, SAm
0430 English	7220	9435	9730 NEAs
0430 English	11735	13760	15180 CAm, SAm
0430 French	13650	15105	SEAs
0530 Chinese	7220	9435	9730 NECHN
0530 English	13650	15105	SEAs
0530 Spanish	11735	13760	15180 CAm, SAm
0630 Chinese	13650	15105	SEAs
0630 English	7140	9435	9730 NEAs
0630 French	11735	13760	15180 CAm, SAm
0730 Japanese	621	3250	7580 9650 J
0730 Korean (PBS)	7220	9435	NEChina
0730 Russian	9875	11735	FE
0730 Russian	13760	15245	Eu
0830 Chinese	7220	9435	NECHN
0830 Japanese	621	3250	7580 9650 J
0830 Russian	9875	11735	FE
0830 Russian	13760	15245	Eu
0930 Japanese	621	3250	6070 7580 9650 J
0930 Korean (KCBS)	7220	9435	NEChina
0930 Korean (PBS)	9875	11735	FE
0930 Korean (PBS)	13760	15245	Eu
1030 English	6185	9850	SEAs
1030 English	6170	9435	CAm, SAm
1030 Japanese	621	3250	6070 7580 9650 J
1030 Korean (PBS)	7220	9435	NEChina
1130 Chinese	7220	9435	CHN
1130 French	6185	9850	SEAs
1130 French	6170	9435	CAm, SAm
1130 Japanese	621	3250	6070 7580 9650 J
1230 Japanese	621	3250	6070 7580 9650 J
1230 Korean (KCBS)	6185	9850	SEAs
1230 Korean (KCBS)	6170	9435	CAm, SAm
1230 Korean (PBS)	7220	9435	NEChina
1330 Chinese	6185	9850	SEAs
1330 English	7570	12015	WEu
1330 English	9435	11710	NAm
1330 Korean (PBS)	6170	9425	Eu
1430 French	7570	12015	WEu
1430 French	9435	11710	NAm
1430 Korean (KCBS)	6185	9850	SEAs
1430 Russian	6170	9425	Eu
1530 Arabic	9890	11645	ME, NAF
1530 English	7570	12015	WEu
1530 English	9435	11710	NAm
1530 Russian	6170	9425	Eu
1630 English	9890	11645	ME, NAF
1630 French	7570	12015	WEu
1630 French	9435	11710	NAm

1630	German	6170	9425	WEu
1730	Arabic	9890	11645	ME, NAF
1730	Korean (KCBS)	7570	12015	WEu
1730	Korean (KCBS)	9435	11710	NAm
1730	Russian	6170	9425	Eu
1830	English	7570	12015	WEu
1830	French	7210	11910	SAf
1830	French	9875	11635	ME, NAF
1830	German	6170	9425	WEu
1930	English	7210	11910	SAf
1930	English	9875	11635	ME, NAF
1930	German	6170	9425	WEu
1930	Spanish	7570	12015	WEu
2030	French	7570	12015	WEu
2030	Korean (KCBS)	6170	9425	WEu
2030	Korean (KCBS)	7210	11910	SAf
2030	Korean (KCBS)	9875	11635	ME, NAF
2130	Chinese	7235	9435	NEChina
2130	Chinese	9875	11635	CHN
2130	English	7570	12015	WEu
2130	Japanese	621	3250	7580 9650 J
2230	Chinese	7235	9435	NEChina
2230	Chinese	9875	11635	CHN
2230	Japanese	621	3250	7580 9650 J
2230	Spanish	7570	12015	WEu
2330	Japanese	621	3250	7580 9650 J
2330	Korean (KCBS)	7235	9435	NEChina
2330	Korean (KCBS)	7570	12015	WEu
2330	Korean (KCBS)	9875	11635	China

(via Arnulf Piontek)

KUWAIT - Winter B-17 active frequencies of MOI Radio Kuwait:

0500-0800 on 11970 KBD 250 kW / 100 deg to SAs English DRM

[I've yet to see any logs of this one. Years ago had morning bc in English on AM this trihour --- gh]

0500-0900 on 15515 KBD 250 kW / 059 deg to EAs Arabic General Service

0800-1000 on 7250 KBD 250 kW / non-dir to WAs Farsi, very odd 7249.9

0945-1315 on 15110 KBD 250 kW / 310 deg to WEu Arabic General Sce DRM

1000-1200 on 17760 KBD 250 kW / 084 deg to SEAs Filipino-ann.old 21580

1600-1800 on 15540 KBD 250 kW / 100 deg to SAs Urdu

1700-2000 on 13650 KBD 250 kW / 350 deg to ENAm Arabic General Sce DRM

1800-2100 on 15540 KBD 250 kW / 310 deg to WEu English DRM

Winter B-17 inactive transmissions and frequencies of MOI Radio Kuwait:

0200-0900 on 5960 KBD 250 kW / non-dir to N/ME Arabic General Service

0930-1600 on 11630 KBD 250 kW / 230 deg to Caf Arabic Holy Qur'an Sce

1100-1600 on 9750 KBD 250 kW / 286 deg to NEAf Arabic General Service

1600-2100 on 6050 KBD 100 kW / non-dir to N/ME Arabic General Service

2000-2400 on 17550 KBD 250 kW / 350 deg to ENAm Arabic General Service

(Ivo Ivanov, SWLDX Bulgaria News, October 30-31, dxldyg via DXLD)

LIBERIA - 6050 on Mo Oct 23 at 0648-0717 UT, ELWA Radio, Monrovia-LBR, in English. Man talks, preaching; 0700 UT Songs till 0715 UT: African rhythms, all by choral, with enthusiasm; 0715 UT Woman announcer talks and says Liberia. No spanish, no quechua, all program in english language, with a very poor signal and modulation, 25322. ELWA transmitter 1 kW impossible to head in Cabedelo: Has the power been increased? Help will be welcome!

6050 on Wed Oct 18 at 0548-0615 UT, ELWA Radio, Monrovia-LBR*, in English. African songs; 0558 UT Other song; 0600 UT Man talks, ID and a hymn by choral; Man talks, says Good Morning and makes a preaching; A song; 0612 UT Woman makes a preaching. Station has a fair to poor transmission, 35333 to 35332.

Is it really ELWA, with only 1 kw on the transmitter? Distance from Cabedelo-PB 3053 km.

(Jose Ronaldo Xavier-PB-BRAS, hcdx Oct 23)

MADAGASCAR - B-17 of WCB KNLS from Mahajanga Madagascar World Voice, from Oct 29, 2017, til 25 March, 2018:

0200-0300	6190	MWV	100	kW	250	deg	to	SAm	Spanish	tx#1	
0200-0300	9600	MWV	100	kW	040	deg	to	SAs	English	tx#2	
0300-0400	7330	MWV	100	kW	265	deg	to	SAm	Spanish	tx#1	
0300-0400	15560	MWV	100	kW	040	deg	to	SAs	English	tx#2	
0400-0500	11825	MWV	100	kW	295	deg	to	CAf	English	tx#1	
0400-0500	17530	MWV	100	kW	055	deg	to	EAs	Chinese	tx#2	
1800-1900	9570	MWV	100	kW	355	deg	to	EEu	Russian	tx#1	
1800-1900	17640	MWV	100	kW	310	deg	to	WAF	English	tx#2	
1900-2000	9810	MWV	100	kW	355	deg	to	EEu	Russian	tx#2	
1900-2000	11945	MWV	100	kW	355	deg	to	NE/ME	Arabic	tx#1	
2000-2100	11945	MWV	100	kW	355	deg	to	NE/ME	Arabic	tx#1	
2000-2100	17640	MWV	100	kW	295	deg	to	CAf	English	tx#2	appeared again !
2100-2200	11610	MWV	100	kW	325	deg	to	WEu	Chinese	tx#1	
2200-2300	9490	MWV	100	kW	055	deg	to	EAs	Chinese	tx#2	
2200-2300	11790	MWV	100	kW	325	deg	to	NAf	Arabic	tx#1	

(hfcc B-17 WCB MWV registration entries, via wwdxc BC-DX TopNews Nov 8)

NEW ZEALAND - RNZI 29 Oct 2017 - 24 Mar 2018:

UTC	kHz	Target	Days
00:00-04:58	15720	Pacific	Daily
04:59-07:58	11725	Pacific	Daily
07:59-10:58	9765	Pacific	Daily
10:59-12:58	11610	Solomon Islands PNG	Daily
12:59-16:50	7355	Pacific	Daily
16:51-17:50	5975 (DRM)	Cook Islands, Samoa, Tonga	Su-Fr
16:51-17:58	7355	Pacific	Sa
17:51-18:50	9780 (DRM)	Cook Islands, Tonga Samoa	Su-Fr
17:59-19:58	11725	Pacific	Sa
18:51-19:50	11690 (DRM)	Cook Islands, Samoa, Tonga	Su-Fr
19:51-20:50	13840 (DRM)	Pacific	Su-Fr
19:59-20:58	13840	Pacific	Sa
20:51-00:00	15720	Pacific	Daily

OMAN - Radio Sultanate of Oman in Arabic, English and again Arabic, Nov. 1:

1400-1500 on 15140 THU 100 kW / 315 deg to WEu Arabic, instead of English
 1500-1600 on 15140 THU 100 kW / 315 deg to WEu English, instead of Arabic
 1600-2200 on 15140 THU 100 kW / 315 deg to WEu Arabic as scheduled in B17
 (DX MIX 1039)

PHILIPPINES - new 17700 kHz, R. Pilipinas, ex12010 kHz at 0200 UT, on Oct 31. Choral anthem; time pip (about one minute late); ID; sound bites from various past presidents; 0205 UT "From the presidential palace Manila, Dateline Malacanang," info about the current activities of the government; 0220 UT "From the News Center of Radio Pilipinas. This is the PBS News": // 15640 kHz & 17820 kHz, with 17700 kHz being the strongest.
 (Ron Howard-CA-USA, via wwdxc BC-DX TopNews Oct 31)

SOMALIA - Hargeisa from 0330 UT s/on on 7120 kHz is well heard also on approx 7162-7164 kHz drifted freq spur already for months. Earlier the idea was it is Sound of Hope plus jamming.
 (Rumen Pankov-BUL, via wwdxc BC-DX TopNews Oct 21)

SOUTH AFRICA - Channel Africa has registered this winter schedule 2017/18 via Meyerton:

Mondays to Fridays

0300-0400: 6155 (250 kW, 19°) for Central and East Africa: English (morning service "Africa - Rise and Shine")
 0300-0500: 3345 (100 kW, 5°) for Southern Africa: English
 0500-0900: 7230 (100 kW, 5°) for Southern Africa: English
 0600-0700: 15255 (250 kW, 328°) for West Africa: English
 0900-1600: 9625 (100 kW, 5°) to Southern Africa: English. 1200 Nyanja. 1300 Lozi. 1400 Portuguese. 1500 English
 1500-1600: 17770 (250 kW, 19°) for Central and East Africa: KiSwahili
 1600-1800: 15235 (250 kW, 328°) for West Africa: French. 17.00 English (evening service "Africa Digest")
 1600-1700: 6035 (100 kW, 5°) to Southern Africa: English (* new transmission as compared to Summer 2017)
 (<<http://www.channelafrica.co.za/sabc/home/channelafrica>>
 (HFCC, via hjb, Oct 31, 2017)

SPAIN - Radio Exterior de España, frequencies in B17, Oct. 29 in 2017 to March 25 in 2018:
(destinated especially for the Spanish fishermen - we)

Monday to Friday 19.00-23.00 UTC:

- Africa and South Atlantic 11685 KHz
- South America 15390 KHz
- North America and Greenland 9690 KHz
- Middle East, Indian Ocean and North Atlantic 15500 KHz

Saturday and Sunday:

- Africa and South Atlantic 17755 KHz 15.00-19.00 UTC
11685 KHz 10.00-23.00 UTC
 - South America 15390 KHz - 15.00-23.00 UTC
 - North America and Greenland 9690 KHz - 15.00-23.00 UTC
 - Middle East, Indian Ocean and North Atlantic - 15500 KHz 15.00-23.00 UTC
- (RNE website)

SWAZILAND - TRANS WORLD RADIO - MANZINI, SWAZILAND

Tentative BROADCAST SCHEDULE B-17 29th October 2017 to 24th March 2018:

TIME/UTC	DAY	LANGUAGE	FREQ	PWR	ANT	AZI	Target Zone
0300 0330	1234567	Shona	3240	50	6	3	Zimbabwe
0330 0345	1234567	Ndau	3240	50	6	3	Zimbabwe
0430 0500	23456	English	3200	50	9	233	South Africa
0430 0700	23456	English	4775	50	4	233	SAfrica
0500 0600	1 7	English	3200	50	9	233	South Africa
0500 0700	1 7	English	4775	50	4	233	SAfrica
0501 0700	1234567	English	6120	50	4	233	SAfrica
1400 1415	1234567	Urdu	15360	100	103	43	Pakistan
1420-1435	23456	Lomwe/Port	7315	100	11	5	N Mozambique
1420-1450	1	Makua (WoH)	7315	100	11	5	N Mozambique
1420-1455	1234567	English	7300	50	6	3	Zimbabwe
1455 1525	1234567	Shona	7300	50	6	3	Zimbabwe
1455-1525	23456	Malagasy	9585	100	3	64	Madagascar
1455 1525	1 7	French	9585	100	3	64	Madagascar
1525 1555	23456	Shona	7300	50	6	3	Zimbabwe
1557 1627	23456	KiRundi	15105	100	10B	13	Burundi
1630-1645	3	Oromo	11660	100	10B	13	Ethiopia
1630 1645	3	Shangaan	4760	50	6	3	S Mozambique
1630-1645	12	Amharic	11660	100	10B	13	Ethiopia
1630 1645	67	Kambaata	11660	100	10B	13	Ethiopia
1630 1645	7	Portuguese	4760	50	6	3	S Mozambique
1630-1700	45	Oromo	11660	100	10B	13	Ethiopia
1645-1700	234	Oromo/Borana	11660	100	10B	13	Ethiopia
1645 1700	1	Oromo	11660	100	10B	13	Ethiopia
1645 1700	67	Hadiya	11660	100	10B	13	Ethiopia
1700 1715	7	Amharic	11660	100	10B	13	Ethiopia
1700 1730	123456	Amharic	11660	100	10B	13	Ethiopia
1700 1730	1234567	Yawo	7300	100	11	3	Malawi/NoMOZ
1715 1800	7	Oromo	11660	100	10B	13	Ethiopia
1730-1800	23456	Oromo	11660	100	10B	13	Ethiopia
1730-1800	1	Amharic	11660	100	10B	13	Ethiopia
1745 1800	1	Swahili	9475	100	11	5	East Africa
1745 1800	7	Turkana	9475	100	11	5	East Africa
1745 1815	23456	Swahili	9475	100	11	5	East Africa
1800 1815	7	Swahili	9475	100	11	5	East Africa
1800-2015	1234567	English	1170	100	MW	ND	Swaziland WoHope
1802 1832	23456	English	9500	100	10B	13	East Africa
1802 1902	7	English	9500	100	10B	13	East Africa
1820 1850	23456	Umbundu	6130	100	1	312	Angola TTB Umbundu
1832 1847	23456	Juba Arabic	9500	100	10B	13	East Africa
1834 1849	1	Swahili	9500	100	10B	13	East Africa

1850	1905	7	Chokwe	6130	100	1	312	Angola
1850	1905	123456	Umbundu	6130	100	1	312	Angola Yeva Ondaka
1905	1920	4	Luchazi	6130	100	1	312	Angola
1905	1920	23	Portuguese	6130	100	1	312	Angola
1905	1920	5	Luvala	6130	100	1	312	Angola
1905	1920	6	Fiote	6130	100	1	312	Angola
1905	1920	7	Umbundu	6130	100	1	312	Angola Yeva Ondaka
1905	1920	1	Kikongo	6130	100	1	312	Angola
1905	1935	1234567	Lingala	9940	100	101	343	D R Congo
1920	1935	1	Kuanyama	6130	100	1	312	Angola
1920	1950	23456	Portuguese	6130	100	1	312	Angola TTB
1920	2005	7	Portuguese	6130	100	1	312	Angola
1935	1950	1234567	French	9940	100	101	343	D R Congo
1935	2005	1	Portuguese	6130	100	1	312	Angola
1950	2005	23456	Kimbundu	6130	100	1	312	Angola
2015-2115	1234567		Zulu	1170	100	MW		ND Swaziland
2115-2200	1234567		Shona	1170	100	MW		ND Swaziland In Touch

TAIWAN / TAJIKISTAN / UZBEKISTAN / MONGOLIA - BBC London Korean sce relay

5895 Teleradiocom Orzu-TJK

7530 RRTM Tashkent-UZB

9940 CBSD/RTI Tamsui-TWN, 1530-1830 UT.

Alle annaehrend gleich mit O=3.

Die hier im Artikel angedeutete vierte fq 7395 aus Kranji Singapore ist aktuell mit einem progr in English belegt (O=3).
Alle Empfaenge in AM und 8 kHz.

7395kHz 1530-1830 UT zones 44NE SNG 250kW 25deg 0 207 291017-250318 Korean SNG BBC BAB #16032

<http://www.radioeins.de/programm/sendungen/medienmagazin/radio_news/beitraege/2016/bbc_korea.html>

BBC verstaerkt koreanische Sendungen

Fuenf Wochen nach dessen Start verstaerkt die BBC ab dem 29. Oktober die Ausstrahlung ihres koreanischen Programms um eine dritte Frequenz. Zugleich wird die von einer militaerischen Funkanlage in China (nicht, wie verschiedentlich in voreiliger Weise angenommen, einem nordkoreanischen Stoersender) beeintraechtigte Frequenz 5810 kHz ersetzt.

Ab Sonntag laeuft das Programm von 1630 bis 1930 Uhr CET / MEZ ueber den zusaetzlich angemieteten Sender in Tadschikistan auf 5895 kHz, aus Usbekistan auf der neuen Frequenz 7530 kHz und aus Taiwan unveraendert auf 9940 kHz. Moeglicherweise wird auch noch eine vierte Frequenz von der eigenen Sendestation der BBC in Singapur hinzugenommen. Hierfuer reserviert ist 7395 kHz.

Fuer eine Ueberraschung sorgte unterdessen die Ausstrahlung auf der Mittelwelle {Choibalsan-Mongolia 500 kW 150deg} 1431 kHz, die wahrscheinlich weiter von 1730 bis 1830 Uhr CET / MEZ stattfinden wird. Am 23. Oktober konnte sich das Signal aus der Mongolei im suedlichen Finnland nachhaltig gegen den ukrainischen Grosssender durchsetzen, der sonst diese Frequenz dominiert. (via Herbert Meixner-AUT, A-DX ng Oct 29)

9940 kHz BBC London Korean service wird jetzt hier in Sueddeutschland um 1630-1700 UT vollkommen von TWR Africa in Arabisch Somalia fuer Ostafrika zugedeckt, S=9+5dB, registriert ueber die Moldau Station Grigoriopol in Pridnestrovie.

1630-1700UT 1234567 Somali 9940kHz 160degr Kenya/Somali KCH Moldova

In Tokyo soeben gehoert: 7529 Whistle Jamming Tone / 7530 kHz hat einen nervenden 1 kHz Pfeifton als Jamming Notloesung? der sehr unflexiblen Koreaner aus KRE auf 7529 kHz? Sie benoetigen immer einige Wochen um feste Jamming Aussendungen einzurichten. 1 kHz whistle Ton ist ein allgemeiner Jamming Brauch, wird auch seit Jahren aus Omdurman Sudan gegen die westlichen Suedliche Sudan Programme aus Holland angewandt.

QRM - 5895 kHz Empfaenge in KRE duerften bei unzuellaenglicher Bandselektion von KRE Empfaengern sehr durch das durchgehende 15-19 UT Signal von US RFA Koreanisch auf 5885 kHz aus IBB-BBG Tinian den Marianen Inseln leiden. (wb, wwdxc BC-DX TopNews Oct 29)

TANZANIA [ZANZIBAR] - 11735 at 1821- UT, Zanzibar Broadcasting Corporation on Oct 7. Very good reception in presumed Swahili. Marred by splatter from 11720 kHz which is VOA in Amharic from Udon, Thailand. Something is amiss as the noise spreads across about 42 kHz of spectrum. Not nice! Most is white noise(*), so I wonder whether they're being jammed? In any case, nice to see them back after an absence. Transmitter cut in mid-sentence at 2100

UT. (Walt Salmaniw-BC-CAN, DXplorer Oct 10)

(*) This made in China BBF Beijing transmitter has also the digital WHITE NOISE option built in - like in Gedja Ethiopia similar; and the technician at Zanzibar Island sometimes switched also the white noise modulation mixture on air, wb.

6015, ZBC Radio on Oct 9 & 10 from 0300+ UT, decent level carrier, but certainly no audio at all, which is confirmed by Bill Bingham (RSA). This frequency had been silent for several months, but clearly needs more work to get their modulation to work again.

(Ron Howard-CA-USA, DXplorer via wwdxc BC-DX TopNews Oct 11)

TURKEY - Winter B-17 schedule Vo Turkey Shortwave Broadcasting Schedule of VOT, 29 October 2017 - 25 March 2018:

11955	1000	1100	37, 38N, 39N, 40W	500	180	216	Arabic	TUR	TRT
7295	1500	1600	38E, 39, 40W	250	150	205	Arabic	TUR	TRT
17720	1500	1600	37, 38W, 46	500	262	211	Arabic	TUR	TRT
11710	0800	0900	29SE, 39NE, 40NW	250	72	211	Azeri	TUR	TRT
5965	1630	1730	29SE, 39NE, 40	500	90	205	Azeri	TUR	TRT
7245	1200	1230	28SE	250	300	205	Bulgarian	TUR	TRT
15420	1200	1300	42-44	500	72	217	Chinese	TUR	TRT
6125	0400	0500	3-9, 17, 18, 27, 28	500	310	215	English	TUR	TRT
7240	0400	0500	38E, 39, 40W	500	138	215	English	TUR	TRT
17530	0500	0600	49SW, 54NW	500	105	219	EnglishNew	TUR	TRT
12035	1330	1430	27, 28W	500	305	205	English	TUR	TRT
11730	1730	1830	30S, 40E, 41N	500	105	215	English	TUR	TRT
6050	1930	2030	27, 28W	250	310	205	English	TUR	TRT
9610	2130	2230	41, 49, 54, 55, 58	500	105	219	English	TUR	TRT
5960	2300	2400	5-11, 17, 18, 27, 28	500	310	215	English	TUR	TRT
9620	1830	1930	38, 47, 48	500	180	216	French	TUR	TRT
5970	2030	2130	27, 28W	500	290	210	French	TUR	TRT
9625	2030	2130	37, 38, 46	500	245	205	French	TUR	TRT
9840	1100	1200	29S	250	72	205	Georgian	TUR	TRT
15270	1230	1330	27, 28	500	310	205	German	TUR	TRT
5945	1830	1930	28	250	310	205	German	TUR	TRT
6185	1500	1530	28S	500	290	210	Italian	TUR	TRT
9785	1430	1500	29E, 30, 31, 42NW	500	72	211	Kazakh	TUR	TRT
9595	1600	1730	30S, 40N	250	72	211	PashtoPrs	TUR	TRT
11795	0930	1100	39N, 40NW	500	120	205	Persian	TUR	TRT
6070	1600	1700	30S, 40	500	105	205	Persian	TUR	TRT
9410	1400	1500	19, 20, 29, 30N	500	30	205	Russian	TUR	TRT
9410	0200	0300	12-16, 37	500	252	219	Spanish	TUR	TRT
9650	0200	0300	8-12, 27S, 37N	500	290	219	Spanish	TUR	TRT
9495	1730	1830	27S, 28, 37	250	290	210	Spanish	TUR	TRT
15360	1100	1130	29, 30	500	32	215	Tatar	TUR	TRT
6000	0100	0300	30, 40, 42	500	72	205	Turkish	TUR	TRT
9700	0400	0700	18S, 27, 28	500	310	215	Turkish	TUR	TRT
11660	0500	0700	39	250	150	205	Turkish	TUR	TRT
15235	0600	0800	38, 47, 48	250	180	216	TurkishNew	TUR	TRT
11925	0700	1000	29SE, 39NE, 40NW	500	105	205	Turkish	TUR	TRT
15480	0700	1300	39, 40W	500	150	205	Turkish	TUR	TRT
15350	0700	1400	27, 28	500	310	215	Turkish	TUR	TRT
11965	1300	1330	30S, 40N	250	72	211	Turkmen	TUR	TRT
11815	1400	1700	27, 28	250	310	215	Turkish	TUR	TRT
5980	1700	2200	27, 28	500	310	215	Turkish	TUR	TRT
6120	1700	2200	38E, 39, 40W	500	150	205	Turkish	TUR	TRT
9460	0300	0400	42	500	72	211	Uighur	TUR	TRT
13685	1330	1430	42, 43	500	72	217	Uighur	TUR	TRT
15390	1300	1400	40, 41N	500	105	215	Urdu	TUR	TRT
13655	1130	1200	30S	500	62	211	Uzbek	TUR	TRT

(TRT via HFCC database requests, wwdxc BC-DX TopNews Nov 3)

UNITED KINGDOM [and non] - Winter B-17 frequency changes of BBC from Oct 29:
0000-0030 NF 7465 SNG 250 kW / 340 deg SEAs Burmese, ex 5875 TAC

0030-0100	NF	7465	SNG	250	kW	/	340	deg	SAs	Bengali, ex 5875	TAC
0100-0130	NF	7565	SCB	100	kW	/	090	deg	SAs	Hindi, ex 9560	SNG
0200-0230	NF	5875	ERV	300	kW	/	100	deg	WAs	Pashto, ex 15755	SNG
0200-0300	NF	6155	SLA	250	kW	/	063	deg	SAs	English, ex 9410	
0200-0230	NF	17790	PHT	250	kW	/	283	deg	SEAs	Burmese, ex 7485	SNG
0230-0300	NF	5875	ERV	300	kW	/	100	deg	WAs	Dari, ex 15755	SNG
0230-0330	NF	5930	OE	250	kW	/	095	deg	WAs	Farsi, ex 5985	WOF
0230-0330	NF	6010	SOF	100	kW	/	090	deg	WAs	Farsi, ex 7230	WOF
0230-0330	NF	7485	KCH	300	kW	/	116	deg	WAs	Farsi, ex 7300	
0300-0330	NF	7300	UAE	250	kW	/	045	deg	WAs	Pashto, ex 11925	SLA
0330-0430	NF	6010	TAC	100	kW	/	236	deg	WAs	Farsi, ex 7305	UAE
0330-0430	NF	7485	KCH	300	kW	/	116	deg	WAs	Farsi, ex 7445	
0400-0430	NF	13840	UAE	250	kW	/	225	deg	Eaf	Somali, ex 15490	
0400-0500	NF	9915	MDC	250	kW	/	315	deg	Saf	English, ex 9460	RSA
0430-0530	NF	11905	SLA	250	kW	/	335	deg	WAs	Farsi, ex 11730	
0500-0600	NF	5925	ASC	125	kW	/	114	deg	Saf	English, ex 7445	
0500-0600	NF	15315	UAE	250	kW	/	255	deg	CEAf	Arabic, ex 15510	
0600-0630	NF	7265	WOF	300	kW	/	170	deg	Caf	French, ex 9880	ASC
0600-0700	NF	7345	ASC	125	kW	/	065	deg	Waf	English, ex 9915	
0600-0700	NF	15315	SLA	250	kW	/	260	deg	CEAf	Arabic, ex 15510	
0700-0730	NF	15490	RSA	250	kW	/	342	deg	Caf	French, ex 15105	
0830-1130	NF	13660	SLA	250	kW	/	035	deg	WAs	Dari/Pashto, ex 17720	UAE
1300-1330	NF	9585	ERV	300	kW	/	078	deg	CeAs	Uzbek, ex 15510	UAE
1300-1330	NF	11995	SLA	250	kW	/	010	deg	CeAs	Uzbek, ex 17780	
1330-1415	NF	5890	TAC	100	kW	/	131	deg	SEAs	Burmese, ex 9900	
1330-1415	NF	11995	SNG	250	kW	/	340	deg	SEAs	Burmese, ex 11945	
1400-1430	NF	5875	TAC	100	kW	/	141	deg	SAs	Hindi, ex 5885	
1400-1430	NF	9510	SNG	250	kW	/	320	deg	SAs	Hindi, ex 9740	
1400-1430	NF	9540	SLA	250	kW	/	060	deg	SAs	Hindi, ex 7600	TAC
1400-1430	NF	11945	SNG	250	kW	/	315	deg	SAs	Hindi, ex 11995	
1400-1500	NF	7465	SNG	250	kW	/	315	deg	WAs	Dari, ex 9810	
1415-1500	NF	11995	SNG	250	kW	/	340	deg	SEAs	Burmese Mo-Fr, ex 11945	
1500-1600	NF	5845	ERV	300	kW	/	100	deg	WAs	Urdu, ex 9920	
1500-1600	NF	5975	SLA	250	kW	/	035	deg	SAs	Pashto, ex 9810	UAE
1500-1600	NF	7405	SLA	250	kW	/	010	deg	CeAs	English, ex 9410	
1500-1600	NF	9410	SNG	250	kW	/	315	deg	SAs	Urdu, ex 11635	
1500-1600	NF	9445	UAE	250	kW	/	060	deg	SAs	Urdu, ex 11910	
1530-1830	on	5895	DB	250	kW	/	072	deg	NEAs	Korean, new in B-17	
1530-1830	on	7395	SNG	250	kW	/	025	deg	NEAs	Korean, new in B-17	
1530-1830	on	7530	TAC	100	kW	/	068	deg	NEAs	Korean, new in B-17	
1530-1830	on	9940	TSH	300	kW	/	002	deg	NEAs	Korean, new in B-17	
1600-1700	NF	5875	TAC	100	kW	/	236	deg	WAs	Farsi, ex 7530	KCH
1600-1700	NF	5975	SLA	250	kW	/	035	deg	SAs	Dari, ex 5830	ERV
1600-1700	NF	6195	SNG	250	kW	/	335	deg	WAs	Farsi, ex 11690	WOF
1600-1700	NF	7465	SNG	250	kW	/	315	deg	WAs	Dari, ex 9810	
1630-1700	NF	5845	SNG	250	kW	/	340	deg	SAs	Bengali, x 5875	
1700-1800	on	9715	UAE	250	kW	/	230	deg	Eaf	Amh/Oro/Tig M-F, new B-17	
1700-1800	on	11995	RSA	100	kW	/	030	deg	Eaf	Amh/Oro/Tig M-F, new B-17	
1700-1800	on	21470	ASC	250	kW	/	070	deg	Eaf	Amh/Oro/Tig M-F, new B-17	
1700-1730	NF	6090	SLA	250	kW	/	035	deg	WAs	Dari, ex 5875	ERV
1700-1730	NF	7465	SNG	250	kW	/	315	deg	WAs	Dari, ex 9810	
1730-1800	NF	6090	SLA	250	kW	/	035	deg	WAs	Pashto, ex 5875	ERV
1730-1800	NF	7465	SNG	250	kW	/	315	deg	WAs	Pashto, ex 9810	
1800-1830	NF	6090	SLA	250	kW	/	035	deg	WAs	Dari, ex 5875	ERV
1800-1830	NF	7300	RSA	250	kW	/	076	deg	Saf	French, ex 7465	
1800-1830	NF	7465	SNG	250	kW	/	315	deg	WAs	Dari, ex 7560	ERV
1800-1830	NF	15490	ASC	250	kW	/	027	deg	Waf	French, ex 15105	
1830-1900	NF	6090	SLA	250	kW	/	035	deg	WAs	Pashto, ex 5875	ERV
1830-1900	NF	7465	SNG	250	kW	/	315	deg	WAs	Pashto, ex 7560	ERV
1900-2100	NF	5875	WOF	250	kW	/	172	deg	Waf	English, ex 9915	
1930-2030	on	6145	UAE	250	kW	/	230	deg	Eaf	Amh/Oro/Tig M-F, new B-17	
1930-2030	on	9780	SLA	250	kW	/	240	deg	Eaf	Amh/Oro/Tig M-F, new B-17	
1930-2030	on	17745	ASC	250	kW	/	070	deg	Eaf	Amh/Oro/Tig M-F, new B-17	

1930-2000 NF 9545 WOF 250 kW / 160 deg WAF Hausa, ex 9825
 1930-2000 NF 15490 ASC 250 kW / 065 deg WAF Hausa, ex 15105
 2000-2030 NF 9545 WOF 300 kW / 160 deg WAF Hausa Fr, ex 9825
 2000-2030 NF 15490 ASC 250 kW / 065 deg WAF Hausa Fr, ex 15105
 (DX MIX NEWS # 1036, Oct.27)

U.S.A. - RFA in B17 - Effective 29 October 2017 through 28 March 2018

We encourage our listeners to tell us when they receive our transmissions. Your reception reports help us evaluate the quality of our signal strength and are always confirmed with an RFA QSL card. Please find mailing instructions below the frequency table.

Burmese

0030-0130 UTC 12115 15700 17510
 1230-1400 UTC 11795 12105 13735
 1400-1430 UTC 11795 12105

Cantonese *FNP

Khmer

1230-1330 UTC 9325 11750
 1430-1500 UTC 9720 11750
 2230-2330 UTC 11850 15275

Korean

1500-1700 UTC 1188 5885 9915 9985
 1700-1900 UTC 1188 5885 9985
 2100-2200 UTC 7485 9860 9985

Lao

0000-0100 UTC 13685
 1100-1200 UTC 13685

Mandarin

0300-0500 UTC 11980 15340 17660
 0500-0700 UTC 11980 15340 17660 21700
 1500-1600 UTC 7415 9790 11765
 1600-1700 UTC 6120 7415 9455
 1700-1900 UTC 7415 9455 9860
 1900-2000 UTC 1098 5890 7475 9455 9860
 2000-2100 UTC 1098 5890 7300 7475 9455 9590
 2100-2200 UTC 1098 7475 9410 9455
 2300-2400 UTC 9860 9900 11775

Tibetan

0100-0200 UTC 9670 11895 11950 13795 15270
 0200-0300 UTC 9455 9670 11895 11950 17525
 0600-0700 UTC 17675 17815 21480 21680
 1000-1100 UTC 9690 15665 17830
 1100-1200 UTC 9315 11550 15745
 1200-1300 UTC 9315 11555 12055 15375 15745
 1300-1400 UTC 9315 12050 13650 15375 15745
 1500-1600 UTC 7540 9315 11660 11805
 2200-2300 UTC 7470 7480 9790
 2300-2400 UTC 5970 7470 7540 9535

Uyghur

0100-0200 UTC 7480 9450 9700 13705 17540
 1600-1700 UTC 7545 7565 11720 11800

Vietnamese

1400-1430 UTC 1503 11850 13735
 1430-1500 UTC 11850 13735

* FNP = frequency not promoted

You can either email your reception reports to us at qsl@rfa.org, submit online using our automated reception report system at <http://techweb.rfa.org> (follow the QSL link), or send them to us by regular mail to:

Reception Reports
Radio Free Asia
2025 M Street N.W., Suite 300
Washington, DC 20036
United States of America

Reception of World Harvest Radio International Angel 2 on Oct. 30:
0500-0600 on 9830 HRI 250 kW / 047 deg to WEu English incl.French 0500 Fr
0600-0700 on 7315 HRI 250 kW / 047 deg to WEu English Brother STAIR
0700-0800 on 7355 HRI 250 kW / 047 deg to WEu English Brother STAIR
(DX MIX 1039)

WWRB Global 2 relay Brother Stair TOM on daytime frequency, Nov. 2:
0630&1000 on 9370 WRB 115 kW / 045 deg to ENAm English, instead of 3185
0200-1200 on 3185 WRB 115 kW / 045 deg to ENAm English WWRB winter B-17
1200-0200 on 9370 WRB 115 kW / 045 deg to ENAm English WWRB winter B-17
(DX MIX 1039)

VATICAN - Winter B-17 additional changes of Vatican Radio:
0620-0700 11935 SMG 250 kW / 115 deg N/ME Latin Mass Sun, ex 0630-0710
0700-0710 11935 SMG 250 kW / 115 deg N/ME Italian Mo-Sa, ex 0700-0715
0710-0730 11935 SMG 250 kW / 115 deg N/ME Arabic Mo-Sa, ex French
0730-0745 11935 SMG 250 kW / 115 deg N/ME French Mo-Sa, ex English
(Ivo Ivanov, SWLDX Bulgaria News, October 24-25, dxldyg via DXLD)

Editor's info desk was closed for this edition on November 10th, 2017, at 21:00 hours UTC.

Please also see the "List of Broadcasts in German" (Hörfahrplan Deutsch) updated regularly on the WWDXC website.

Sources & Contributors: see *DX MAGAZINE 10/2017*

Any items from Glenn Hauser, DX LISTENING DIGEST, and/or World of Radio may be reproduced or broadcast only if full credit be maintained at all stages, from the original source through DXLD, and publications quoting are made available to gh in exchange.

Items from this file may be reproduced or re-reproduced only if full credit is maintained at all stages.

Abbreviations: see *DX MAGAZINE 10/2017*

Editor: see *DX MAGAZINE 10/2017*



DX LOGBOOK

Logs around the clock

by Ashok Kumar Bose, 106 Aspermont Crescent, Brampton, Ontario, L6P 3Z3, Canada
E-Mail: logbook@wwdxc.de

MEDIUMWAVE BAND

Frequency	UTC	SIO	ITU	Radio Station	Language	Programme Details	Date	Rep.
756.0	1900	333	ROU	România Actualitati	Romanian	ID: Music	1710	WP
810.0	1850	221	G	Premier Postwick	English	Birds	2909	MF
855.0	1750	322	G	Classic Premier, Jersey	English	British Policy	1210	MF
873.0	2000	333	E	SER R. Galicia / Zaragoza	Spanish	ID; News; Football	1310	WP
918.0	2020	222	G	Jesus Premier, Oxford	English	Tears of Maria	2010	MF
936.0	1810	222	G	Classic Premier, Dover	English	Courier for manager	2210	MF
954.0	1940	211	G	Premier Gold, Swansea	English	Ford cars	2909	MF
981.0	1925	322	G	Gold Premier, Hampshire	English	Songs from Hitlist	2210	MF
999.0	1905	221	G	Classic Premier, Dover	English	Workforce	2010	MF
1008.0	1910	211	G	Jesus Premier, Luton	English	Jesus is our Lord	2010	MF
1017.0	2005	221	G	Premier, Plymouth	English	Shipping rates	2010	MF
1026.0	1820	211	G	BBC Gold, Plymouth	English	Police	2210	MF
1071.0	1810	222	G	BBC Wiltshire	English	Cornwall Gold Coast	2709	MF
1079.0	1840	211	G	Gold Premier, Stockton	English	Restuarant Service	1710	MF
1107.0	1940	333	G	Jewish Prem., Buckingham	English	Hero of God	2010	MF
1125.0	1750	222	G	Classic Prem., Midlands	English	Cambridge	2210	MF
1134.0	1840	222	G	Classic Prem., Dartmoor	English	Warjails	2210	MF
1152.0	2000	222	G	Folk Gold, Brighton	English	News & Music	1210	MF
1161.0	1745	222	G	Premier. Swindon	English	Budget	1110	MF
1179.0	1805	221	G	Classic Premier, Hull	English	Money transfer	1710	MF
1188.0	1800	221	G	Premier Gold, Hull	English	Concert	1710	MF
1215.0	1930	444	G	Absolute Radio	English	ID; Music	1710	WP
1233.0	0605	232	G	BBC Farnborough	English	Downtown	0610	MF
1242.0	1900	232	G	Class. Premier, Cambridge	English	University Gold	2210	MF
1251.0	1810	222	G	Premier Harrogate	English	Program	1710	MF
1287.0	2035	232	G	Gold Premier Brighton	English	Traffic News	2010	MF
1296.0	0500	232	G	Classic Premier, Brighton	English	Ship rescue	1410	MF
1305.0	1955	222	G	Jesus Prem . Bounemouth	English	Blood of Jesus	2010	MF
1323.0	1830	222	G	BBC Gold, Stonehenge	English	Fire	2210	MF
1332.0	1840	222	G	Classic Gold, Norton	English	Sandhurst	2909	MF
1341.0	1855	333	G	Jesus Gold, Bournemouth	English	North Ireland	2909	MF
1359.0	1910	232	G	Jesus Gold Cambridge	English	Overflow	2210	MF
1368.0	1835	222	G	Jesus Premier, Cambridge	English	Jesus as a professor	2210	MF
1431.0	2000	322	G	Prem. Gold, Southampton	English	Southampton ships	2010	MF
1458.0	1945	433	G	Gold Manchester; R. Lyra	English	Music	1710	WP

SHORTWAVE BANDS

Frequency	UTC	SIO	ITU	Radio Station	Language	Programme Details	Date	Rep.
3955.0	2010	554	G	KBS World via relay	German	ID; Music	2210	WP
3955.0	1935	544	G	R Taiwan Intl. via relay	German	ID; Reports; Music	0811	WP

3955.0	1900	554	G	RTI via Woofferton	German	ID; NX; KP; HJBF	0311	SG
3955.0	2000	554	G	KBS-WR - Woofferton	German	NX; ID; Hörerecke; DX	0411	SG
5875.0	1923	454	G	BBC	English	Sierra Leone	0111	HJB
5920.0	0730	353	D	HCJB via Weenermoor	German	DX; FM-kompakt	0411	SG
5925.0	0518	353	ASC	BBC relay	English	World Economic Forum	0211	HJB
5945.0	1905	554	TUR	TRT Ankara	German	ID; Music	0711	WP
5970.0	0100	141	OMA	BBC	English	Russia & US elections	0211	HJB
5970.0	1600	454	ALB	CRI-Cerrik	German	ID; NX; CRI-PaW-HJBF	0511	SG
5970.0	1645	544	ALB	CRI Beijing via Cerrik	German	ID; reports; lang. lessons	0711	WP
6005.0	0623	454	ASC	BBC relay	English	Silicon valley hearings	0111	HJB
6005.0	0925	332	D	RAE Buenos Aires relay	German	MX; Reports	2410	WP
6005.0	1000	454	D	RAE via Kall	Spanish	NX; ID; economica	3110	SG
6005.0	1400	453	D	RSI via Kall	German	ID; rpt sharing economy	0411	SG
6010.0	0845	111	BHR	Radio Bahrain	English	China & ME	0810	MF
6025.0	1720	443	IRN	IRIB	German	IS,ID,ann, Koran; NX	0811	SG
6040.0	1500	454	ROU	RRI	German	NX; ID; Hörertag	0511	SG
6070.0	1245	443	D	Radio Channel 292	English	ID; Music	2210	WP
6155.0	0200	343	OMA	BBC relay	English	World Economic forum	0211	HJB
6155.0	0510	353	AUT	NHK	English	US Visa system	0211	HJB
6180.0	1805	443	D	Dt. Wetterdienst	German	Weather	2210	WP
6180.0	1945	443	ROU	RRI	German	ID; Reports	3010	WP
6190.0	1633	332	CHN	Xinjiang PBS	Chinese	Choir music	0111	HJB
6195.0	0306	454	OMA	BBC	English	Manhattan attacks	0111	HJB
7195.0	1820	222	UGA	Radio Uganda	English	African Union	0810	MF
7200.0	1750	222	SDN	Voice of Sudan	English	Electric Chairs for Africa	0810	MF
7265.0	1955	554	CHN	CRI	Esperanto	ID	3010	WP
7270.0	1810	222	KEN	Voice of Kenya	English	MP's & PM of Kenya	0810	MF
7300.0	1735	443	IRN	IRIB Teheran	German	ID; Music	2210	WP
7325.0	0615	353	G	BBC	English	UN Aid in Syria	0111	HJB
7330.0	1500	554	ROU	RRI	German	NX; ID; rpt Unternehmen	3110	SG
7345.0	0619	353	ASC	BBC relay	English	UN Aid in Syria	0111	HJB
7345.0	0700	454	ROU	RRI	German	ID; NX; Pop; rpts	0111	SG
7380.0	1600	554	ALB	CRI-Cerrik	German	ID; NX; CRI-PaW-HJBF	0511	SG
7425.0	1720	443	IRN	IRIB	German	IS,ID,ann, Koran; NX	0911	SG
7445.0	1633	353	MDG	BBC	English	Reporting from Iraq	011	HJB
7455.0	1538	252	BOT	VOA	English	Border crossing,Kenny G	0211	HJB
7485.0	2100	343	MRA	RFA-Tinian	Korean	ID in E; ann; rpts	0411	SG
7505.0	0207	131	USA	WRNO	English	Sermon	0411	HJB
7520.0	0042	252	USA	WWCR	English	Sermon	0411	HJB
7540.0	1500	433	TJK	RFA-Dushanbe	Tibetan	ID in E; ann; rpts	0411	SG
9275.0	1325	211	USA	WMLK	English	Program	0810	MF
9315.0	1500	322	MRA	RFA-Tinian	Tibetan	ID in E; ann; rpts	0411	SG
9330.0	1200	232	USA	WBCQ	English	Fight of Christians	0810	MF
9370.0	1310	211	USA	WWRB	English	Jesus	0810	MF
9380.0	0113	353	IND	Vividh Bharati	Hindi	Old Film Music	0411	HJB
9390.0	2000	332	THA	Radio Thailand	German	ID; News; Music	3110	WP
9395.0	0830	252	USA	WRMI	English	Non stop rock & pop music	0511	HJB
9410.0	0404	353	OMA	BBC	English	Sexual misconduct	0111	HJB
9410.0	1826	352	UAE	BBC	English	Global hunger	0111	HJB
9410.0	1710	353	AFS	BBC relay	English	Crisis in Liberia`	0111	HJB
9415.0	0835	252	CHN	CRI	English	Biography of an emperor	0511	HJB
9420.0	1945	322	GRC	ERT- Voice of Greece	Greek	Music	2510	WP
9425.0	1840	443	IND	AIR Bengaluru	Hindi	ID; Music	2610	WP
9435.0	1600	343	CHN	CRI	English	ID; NX; trump visit	0911	SG
9485.0	1930	142	VAT	NHK relay	English	New Budget,IT start ups	0211	HJB
9525.0	1500	343	CHN	CRI	English	ID; NX; trump visit	0911	SG

9550.0	0602	252	SAO	VOA	English	Venezuela, Catalonia	0311	HJB
9560.0	1400	353	UZB	NHK relay	English	New cabinet	0211	HJB
9560.0	1610	221	ETH	Radio Ethiopia	English	War crimes in Africa	0810	MF
9580.0	0840	111	GAB	Africa No. 1	English	War crimes	0810	MF
9720.0	1410	221	CLN	FEBA	English	Big Help for Asia	0810	MF
9770.0	0515	453	F	NHK	English	Al Quaida & Iran	0211	HJB
9810.0	1420	554	ROU	RRI	Romanian	ID; rpt universidad	0911	SG
9860.0	2100	343	MRA	RFA-Tinian	Korean	ID in E; ann; rpts	0411	SG
9865.0	1500	343	IND	Vividh Bharati	Hindi	Dongs by Arijit Singh	0411	HJB
9915.0	0720	454	ASC	BBC relay	English	Social media	0211	HJB
9915.0	1826	352	G	BBC	English	Global Hunger	0111	HJB
9915.0	0406	151	MDG	BBC relay	English	Manhattan attacks	0111	HJB
11685.0	1500	111	TWN	Radio Taiwan	English	Taiwan car electronics	0810	MF
11734.0	1800	443	TZA	R. Tanzania Zanzibar	English	ID; NX; ID;	0911	SG
11735.0	1550	131	TZA	Radio Tanzania	English	Animals criminals	0810	MF
11770.0	0721	353	ASC	BBC relay	English	Soccer News	0211	HJB
11800.0	1816	454	AFS	NHK	English	700 years old book	0211	HJB
11800.0	1810	454	AFS	NHK-World R. Japan	English	ID; NX; ID; culture	0911	SG
11805.0	1500	342	KWT	RFA-Kuwait	Tibetan	ID in E; ann; rpts	0511	SG
11810.0	2105	453	ASC	BBC relay	English	Indian politicians	0111	HJB
11830.0	1840	221	AFS	AWR	English	Africa Cold War	0810	MF
11805.0	1500	342	KWT	RFA-Kuwait	Tibetan	ID in E; ann; rpts	0511	SG
11850.0	1350	353	PHL	RVA	Vietnamese	rpts; IS; ID in E; cd	0911	SG
12020.0	1140	111	VTN	Voice of Vietnam	English	Vietnam war	0810	MF
12035.0	1330	554	TUR	TRT	English	ID; NX; legends Anatolia	0511	SG
12095.0	1510	454	MDG	BBC relay	English	Violence in ERI	0111	HJB
12095.0	2000	454	ASC	BBC relay	English	FARC Colombia	0111	HJB
12095.0	1633	352	AFS	BBC relay	English	Experiences from Iraq	0111	HJB
13590.0	1954	252	SAO	VOA	English	I phone X	0211	HJB
13670.0	1350	554	CHN	CRI	English	ID; emotions; MX	0811	SG
13680.0	1800	221	BGD	Radio Bangladesh	English	Anti war fighter for Asia	0810	MF
13685.0	1100	342	MRA	RFA-Saipan	Lao	ID in E; ann; rpts	0511	SG
13720.0	1345	454	CHN	CRI	French	ID; rpts economique	0911	SG
13790.0	1330	454	CHN	CRI	English	ID; rpt on religion	0911	SG
15140.0	1420	232	OMA	Radio Oman	English	European Hit List	0810	MF
15170.0	1230	111	CTR	REE	Spanish	Catalan	0810	MF
15190.0	1440	121	GUI	Radio Africa	English	Guns for Africa	0810	MF
15235.0	1723	354	AFS	Channel Africa	English	Hepatitis interview	0111	HJB
15250.0	1830	222	ASC	FEBA	English	Liberty for Africa	0810	MF
15270.0	1230	554	TUR	TRT	German	NX; ID; HJBF; FdM	0911	SG
15460.0	1200	554	ROU	RRI	English	NX; ID; business club	3110	SG
15400.0	1710	453	ASC	BBC relay	English	Crisis in Liberia	0111	HJB
15400.0	0722	454	AFS	BBC-Relay	English	Nuclear power for Nigeria	0111	HJB
15420.0	1515	454	AFS	BBC-Relay	English	Elections in Liberia	0111	HJB
15420.0	0525	252	MDG	BBC relay	English	Rohingya	0211	HJB
15525.0	1125	132	UAE	Good News	English	Our Big Hope	0810	MF
15580.0	1400	454	BOT	VOA	English	ID; NX; Popmusic	0911	SG
15580.0	1600	454	BOT	VoA-Relay	English	North Kores nuclear tests	0211	HJB
17615.0	0700	454	CHN	CRI	German	ID; Kulturkollage	3110	SG
17640.0	1638	251	ASC	BBC relay	English	Reporting from Iraq	0111	HJB
17675.0	1135	122	NZL	RZNI	English	Water over Wellington	0810	MF
17720.0	0700	454	CHN	CRI	German	ID; Kulturkollage	3110	SG
17770.0	1710	151	ASC	BBC relay	English	Crisis in Liberia	0111	HJB
17830.0	1638	251	ASC	BBC relay	English	Reporting from Iraq	0111	HJB

17895.0	1540	151	SAO	VOA	English	Music	0211	HJB
21690.0	1220	221	GUF	RFI	English	Tour de France	0810	MF

Here are the loggings from Richard A. D'Angelo of Wyomissing, Pennsylvania, USA:

- 5910.4 COLOMBIA Alcaraván Radio - Puerto Lleras, 0410-0509 Oct 14, program of Latin vocals hosted by a woman announcer with Spanish language talk, occasional station IDs and announcements. Fair.
- 6090.0 ANGUILLA Caribbean Beacon, 0200-0227 Nov 1, noted back on air with religious programming in the English language with excellent signal. However, next night no signal present at 0100 so not everything is back to normal yet.
- 6090.0 ETHIOPIA Amhara State Radio – Addis Ababa, 0324-0403 Oct 11, tuned in to hear a man announcer talking in the Amharic language. Program of talk segments by a man and woman with short instrumental music bridges between segments. The carrier was cut at 0350 for about a minute and again at 0358 for two minutes making station ID difficult. Fair signal.
- 7181.5 ERITREA Voice of the Broad Masses of Eritrea – Asmara, 0330-0402 Nov 2, thanks to a tip from Ralph Perry noted two nights in a row with man announcer talks in presumed Amharic language followed by Horn of Africa music. First night loud growl on frequency but next night essentially in the clear with nice signal.
- 7240.0 TURKEY Voice of Turkey – Emirler, 0405-0426 Nov 1, man announcer with news in the English language. Nice ID at 0412 followed by Turkish music and then a woman announcer with a history segment. Fair.
- 7255.0 NIGERIA Voice of Nigeria – Ikorodu, 0654-0712 Oct 11, during a insomnia moment I tuned in to a man announcer speaking in the Hausa language. Brief instrumental music at 0700 followed by station ID and change to French language with a woman talking. Short instrumental music bridges. Poor to fair with deep fades.
- 7300.0 ENGLAND Radio Akhbar Mufriha (HCJB) – Woofferton, 2104-2144* Oct 28, brief fifteen-minute program with contact information provided at 2115, 2130 and again just prior to close. Seemed to be Arabic language program. Fair.
- 7320.0 CLANDESTINE Denge Kurdistane – Yerevan-Gavar, 0408-0443 Oct 22, finally heard from this new broadcast location with poor to fair signal and non-stop Kurdish vocal selections.
- 7325.0 CHINA China Radio International – Xian, 2124-2130* Oct 9, man announcer with non-stop talk in listed Serbian language until the carrier was terminated. Poor signal.
- 7325.0 ROMANIA Radio Romania International – Tiganesti, 2220-2243 Oct 9, man and woman announcers hosting the English language program with report on waste management and recycling activities in country followed by Sports update. Fair to good signal.
- 7325.0 SÃO TOMÉ Voice of America – Pinheira, 2048-2101* Oct 28, man announcer with talk in the listed Hausa language followed by a vocal selection at 2057. At 2199 a man announcer in English language station IS "This is the Voice of America, Washington, DC signing off." This was followed by Yankee Doodle theme music until carrier was terminated. Fair.
- 7425.0 NEW ZEALAND Radio New Zealand International – Rangitaiki, 1233-1258* Oct 10, English program with two men discussing farming techniques followed by station ID and woman announcer hosting pop music selections. Poor to fair.
- 9719.6 EGYPT Radio Cairo – Abis, 2202-2249* Oct 6, woman announcer with the news in the English language. Station ID at 2206 followed by nice Egyptian music program and other features. Carrier later cut during music selection without any announcements. Nice signal but somewhat muddy audio.
- 9815.0 BOTSWANA Voice of America – Moepeng Hill, 0343-0406 Oct 7, man announcer talking in listed Kirundi language followed by brief instrumental music and talk by a woman announcer. Instrumental music at 0359 followed by station ID and vocal selections. Fair.
- 9940.0 SWAZILAND Trans World Radio – Manzini, 1947-1050* Oct 17, man announcer closing the French language program which was followed by IS at 1949 until carrier terminated. Poor.
- 11610.0 MADAGASCAR World Christian Broadcasting – Mahajanga, 2118-2142 Oct 19, Mandarin language religious programming with familiar "SMZG.org" electronic address heard at 2129 during station ID break. Followed by vocal selections. Good signal.
- 11815.0 BRAZIL Radio Brasil Central – Goiânia, 0415-0452 Oct 6, a man announcer with long religious talk in the Portuguese language. Talk ended at 0432 followed by another man announcer with station ID followed by vocals. Fair.
- 11855.0 BRAZIL Radio Aperecida – Aperecida, 2254-2317 Oct 6, man announcer with Portuguese language talks and station ID followed by time pips and more Portuguese language talking. Poor.
- 11955.0 FRANCE Radio Taiwan International – Issoudun, 1717-1758* Oct 28, tuned in to flute music followed by a man announcer speaking in the Russian language. Program consisted mainly of Russian language talks with brief music segments between talks. Instrumental music from 1749 followed by male vocals at 1756 until carrier terminated mid-song. Fair to good signal.
- 12125.0 ARMENIA FEBA Radio - Yerevan-Gavar, 1616-1630* Oct 28, Amharic language program with talks and vocal selection and some brief instrumental music. Woman announcer with contact information prior to brief instrumental music followed by IS. Poor to fair.
- 12125.0 ARMENIA IBRA Radio - Yerevan-Gavar, *1630-1659* Oct 28, after FEBA Radio closed this popped on with a woman announcer with echo effects opening announcements in listed Amharic language. At 1658 the woman announcer with apparent closing announcements prior to brief instrumental music until carrier terminated. Poor to fair.
- 15420.0 CLANDESTINE Radio Itahuka – Talata Volonondry, *1758-1859* Oct 28, open carrier until a man announcer popped on at 1800 with audio talking in presumed Kirundi language with long talks about Rwanda. Off at 1859 with carrier terminated in the middle of the

man announcer talking. So, station popped on a middle of talk and terminated in the middle of a talk. Not very imaginative program for sure. Fair to good signal this time.

21525.0 USA Pan American Broadcasting via WRMI, Okeechobee, 1837-1936 Oct 17, English language religious programming in what appeared to be fifteen-minute blocks. Poor signal and deep fades.

Thanks a lot to our club members for your contributions:

- HJB : Dr. Hansjoerg Biener, Nuremberg, Germany. WebSDR via <http://websdr.ewi.utwente.nl:8901/>.
- MF : Michael Frese, Osnabrueck, Germany. Grundig Yachtboy with telescopic aerial.
- RAD : Richard A. D'Angelo, Wyomissing, PA, USA. Ten-Tec RX-340, Drake R-8B, Eton E1, Lowe HF-150 with Alpha Delta DX Sloper, Datong FL3.
- SG : Siegbert Gerhard, Frankfurt am Main, Germany. AOR 7030 with EMF antenna & Grundig Satellit 700 with Telescopic antenna.
- WP : Wolfgang Pflaesterer, Fürth/Odenwald, Germany. Palstar R30A, JRC NDR-545 DSG with AOR LA400 antenna.

Dear Friends,

Welcome to the November edition of Logbook .

Thanks to our regular as well as our new contributors. (OM Wolfgang is our new contributor).

Till next time,

Ashok Kumar Bose

	<p>QSL CORNER</p> <p>Editor: Dario Gabrielli, Viale della Resistenza 33b, IT-30031 Dolo (Ve), ITALY eMail: <qsl@wwdxc.de></p>	
---	---	---

China: China Radio International 7220 kHz. Japanese program. Partial data QSL card "Nanguang Mosque in Inchuan" received in 19 days for report to Japanese Section: <nihao2180@cri.com.cn> (HT)

France: Radio Taipei Intl 11955 kHz. The Russian program. Full data QSL card "2017 - 9" Received in 28 days for report to Russian section: <russ@rti.org.tw> (AG)

Radio Taiwan International 11955 kHz (Via Issoudun). The Russian program. Full data QSL card (2017 - 10) received in 31 days for report to Russian section: <russ@rti.org.tw> (AG)



Germany: NHK World 6165 kHz. The Russian program. Full data QSL card "Colours on the Autumn Chill" Received in 48 days for report via the form on the website. (AG)

Hawaii (USA): Radio Station WWVH 15000 kHz. Standard Time. Full data QSL card (#23237) received in 37 days for report to <WWVH@nist.gov> (AG)

India: All India Radio 15410 kHz. English program. Full data QSL card "Tawang Lake, Arunachal Pradesh" received in 16 day for report from: <<http://pbinfo.air.org.in/feedback/ReceptionReport.aspx>> (All India Radio Home > Listener's Corner > Reception Report/ Feedback from Listeners along with mandatory one time Listener Registration)

Madagascar: MWV / KNLS 9570 kHz. Russian Christian program. Full data QSL card "of the Malagasy sailing boat"

Received in 27 days for report to Russian section: <mwvradio@gmail.com> (AG)



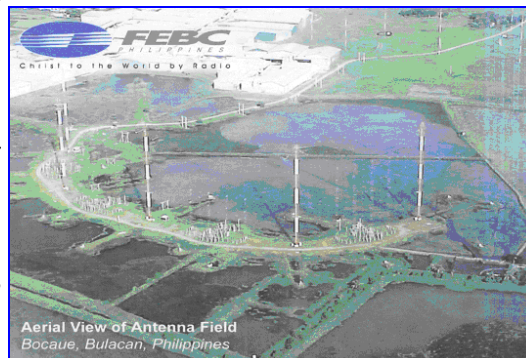
Netherlands: Radio Spaceshuttle 9290 kHz. Test. A pirate radio station. Full date e-QSL card "enclose" Received in 1 day for report to: <spaceshuttleradio@yahoo.com> (AG)

Radio Wilskracht (Pirate) 1655 kHz. Music program. Full data e-QSL received in 7 days for report to: <wilskracht1@gmail.com> (AG)

Radio Zwarte Bizon 1646 kHz. Pirate music Radio. Full data e-QSL card (attachment) received in 1 hour for report to: <radioblauwereiger@gmail.com> (AG)

Philippines: FEBC (Radio Teos) 11650 kHz. The Russian program. Full data e-QSL " mast

antenna " Received in 150 days for report to: <norie.estabillo@febc.ph> (AG)



Romania: Radio Romania International 7360 kHz. The Russian program. Full data QSL card "Mogosoia Palace" Received 35 days for report to Russian section: <rusa@rri.ro> (AG)

Russia: Radio Prague 738 kHz (Via WRN Moscow). The Russian program. Full data QSL card " on Charies Electric tram Bridge in years 1905 - 1908) received in 22 days for report to Russian section: <ruski@radio.cz> (AG)

Russia / Czech Republic: Radio Prague (via WRN Moscow) 738 kHz. Russian program. Full data QSL card "Prague horse-drawn tram is in operation from 1875" Received in 26 days for report to Russian section: <ruski@radio.cz> (AG)

South Korea: KBS World 9645 kHz. The Russian program. Full data QSL card "Celebrating 20 years of KBS WORLD Radio's Internet Service" received in 20 days for report to Russian section: <russian@kbs.co.kr> (AG)

Taiwan: Radio Taiwan International 12030 / 9680 kHz (Test) German program. Full data QSL card "a Collage of 5 photos Nationals Radio museum Minxiong" Received 39 days for a report to the German section: <deutsch@rti.org.tw> (AG)

Turkey: Voice of Turkey 11965 kHz. The Russian program. Full data QSL card "Turkey marks August 30 - victory day" Received in 43 days for report to Russian section: <russian@trt.net.tr> (AG)

Vatican City: Radio Vaticana 15370 kHz. Russian program. Full data QSL card "that Houses the Technical Museum of Vatican Radio" Received in 70 Days for report to Russian section (New address): <russo@spc.va> (AG)

Vietnam: Voice of Vietnam 7280 kHz. The Russian program. Full data QSL card "Hoi An Quang Nam" Received in 21 days for report to Russian section: <golosvietnama@gmail.com> (AG)

The reporters of this edition of QSL CORNER have been:

- AG** = Alexander Golovikhin (Togliattigrad, Russia)
- HT** = Hironori Takeuchi (Chiba, Japan)

Unfortunately this month we have received the contributions of only two reporters - perhaps the other subscribers this monthly did not receive confirmations or did not send their reception reports to receive confirmations. However we wait for your news about confirmations of your reception reports and if possible the pictures of QSLs that you have received in .jpg Format. We remember that the next deadline to contribute for this section in on **December 8th, 2017.**

Dario